

UNITED STATES
DEPARTMENT OF THE INTERIOR
BUREAU OF LAND MANAGEMENT

SUBMIT IN TRIPLICATE*
(Other instructions on
reverse side)

30-045-27491

Form approved.
Budget Bureau No. 1004-0136
Expires August 31, 1985

APPLICATION FOR PERMIT TO DRILL, DEEPEN, OR PLUG BACK

1a. TYPE OF WORK

DRILL ☒

DEEPEN ☐

PLUG BACK ☐

b. TYPE OF WELL

OIL
WELL ☐

GAS
WELL ☒

OTHER

SINGLE
ZONE ☒

MULTIPLE
ZONE ☐

2. NAME OF OPERATOR

Union Texas Petroleum Corporation

3. ADDRESS OF OPERATOR

P.O. Box 2120 Houston, TX 77252-2120

4. LOCATION OF WELL (Report location clearly and in accordance with any State requirements.)

At surface

1690' FNL & 1520' FWL

At proposed prod. zone

14. DISTANCE IN MILES AND DIRECTION FROM NEAREST TOWN OR POST OFFICE*

10 miles NW Archutcta, NM

15. DISTANCE FROM PROPOSED*

LOCATION TO NEAREST

PROPERTY OR LEASE LINE, FT.

(Also to nearest drig. unit line, if any)

1520'

18. DISTANCE FROM PROPOSED LOCATION*
TO NEAREST WELL, DRILLING, COMPLETED,
OR APPLIED FOR, ON THIS LEASE, FT.

1840'

16. NO. OF ACRES IN LEASE

2177.12

326.56

19. PROPOSED DEPTH

5950

17. NO. OF ACRES ASSIGNED
TO THIS WELL

220.93 326.56

20. ROTARY OR CABLE TOOLS

Rotary

21. ELEVATIONS (Show whether OF, BT, GR, etc.)

6404 GR

SUBJECT TO COMPLIANCE WITH ATTACHED
"GENERAL REQUIREMENTS"

22. APPROX. DATE WORK WILL START*

7-8-89

| SIZE OF HOLE | SIZE OF CASING | WEIGHT PER FOOT | SETTING DEPTH | QUANTITY OF CEMENT |
|--------------|----------------|-----------------|---------------|--------------------|
| 12 1/4 | 9 5/8" | 36# | 390 | 220 |
| 8 3/4 | 7" | 23# | 3650 | 370 |
| 6 1/4 | 4 1/2" | 11.6# | 5950 | 280 |

We proposed to drill to 5950' in the Nesaverde Formation according to 8 Point drilling plan & surface use plan.

RECEIVED

JUN 12 1989

BUREAU OF LAND MANAGEMENT
FARMINGTON RESOURCE AREA

RECEIVED

JUL 06 1989

OIL CON. DIV
DIST. 3

IN ABOVE SPACE DESCRIBE PROPOSED PROGRAM: If proposal is to deepen or plug back, give data on present productive zone and proposed new productive zone. If proposal is to drill or deepen directionally, give pertinent data on subsurface locations and measured and true vertical depths. Give blowout preventer program, if any.

24. SIGNED Jim White TITLE Reg. Permit Coord. DATE 6-6-89
(This space for Federal or State office use)

PERMIT NO. _____ APPROVAL DATE _____

APPROVED BY _____ TITLE _____
CONDITIONS OF APPROVAL, IF ANY:

NSP R-392

*See Instructions On Reverse Side

All distances must be from the outer boundaries of the Section.

| | | | | | |
|--|---|------------------------|-----------------------|---|------------------------|
| Operator UNION TEXAS PETROLEUM | | | Lease QUINN | | Well No. 2#A |
| Unit Letter F | Section 19 | Township 31N | Range 8W | County San Juan | |
| Actual Footage Location of Wells 1690 feet from the North line and 1520 feet from the West line | | | | | |
| Ground Level Elev. 6404 | Producing Formation MESAVERDE | | Pool BLANCO | Dedicated Acreage 290.93 326.56 | |

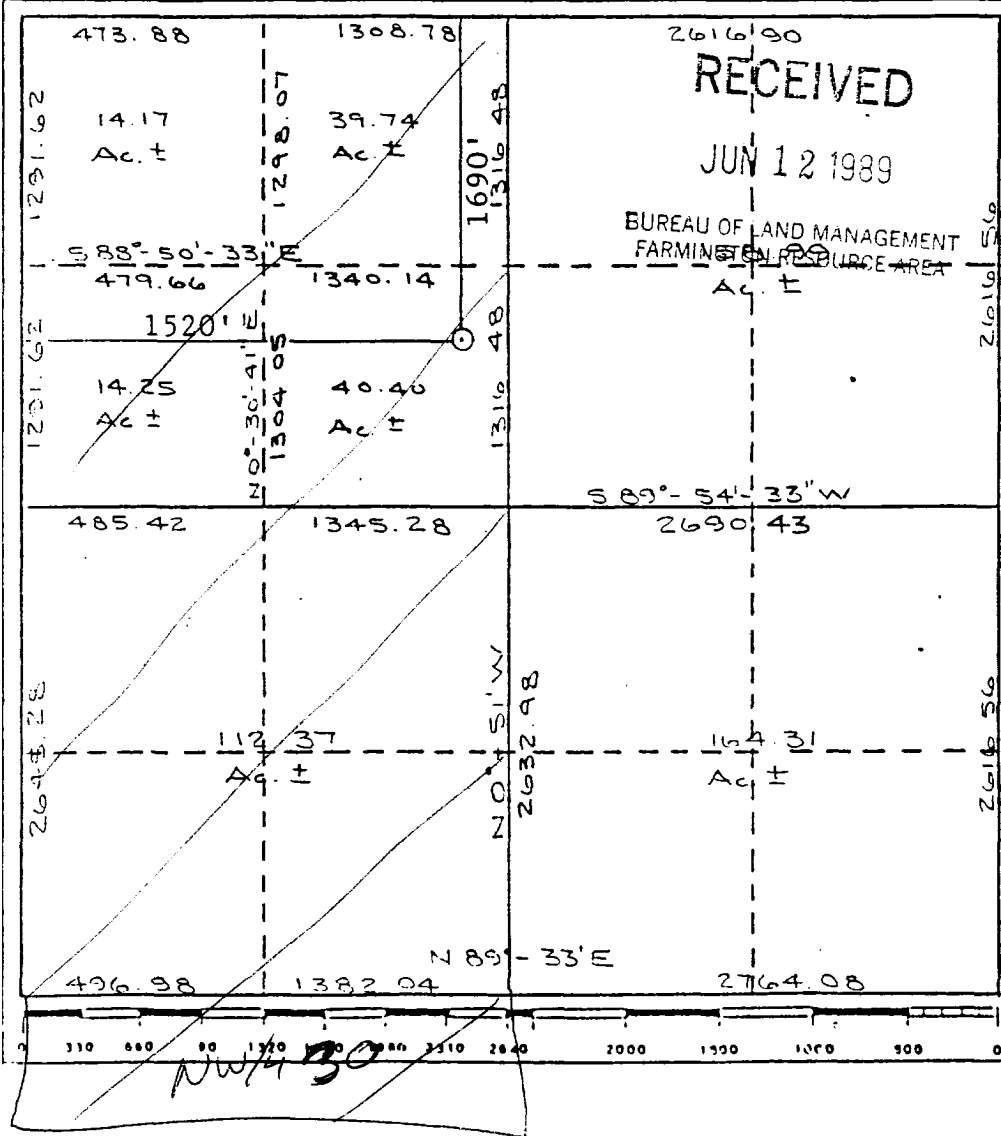
1. Outline the acreage dedicated to the subject well by colored pencil or hatchure marks on the plat below.
2. If more than one lease is dedicated to the well, outline each and identify the ownership thereof (both as to working interest and royalty).
3. If more than one lease of different ownership is dedicated to the well, have the interests of all owners been consolidated by communitization, unitization, force-pooling, etc?

☐ Yes ☒ No If answer is "yes," type of consolidation _____

If answer is "no," list the owners and tract descriptions which have actually been consolidated. (Use reverse side of this form if necessary.) _____

No allowable will be assigned to the well until all interests have been consolidated (by communitization, unitization, forced-pooling, or otherwise) or until a non-standard unit, eliminating such interests, has been approved by the Division.

N 89°-37' W



CERTIFICATION

I hereby certify that the information contained herein is true and complete to the best of my knowledge and belief.

Ken White

Name

KEN White

Position

Reg Permit Coord

Company

Union Texas Petroleum

Date

6-9-89

I hereby certify that the location shown on this plat was obtained from field notes, actual surveys made by me or under my supervision, and that the same is true and correct to the best of my knowledge and belief.

Cecil B. Tullis

Date Surveyed

November 18, 1987

Registered Land Surveyor

Cecil B. Tullis

Certificate No.

9672