

UNITED STATES
DEPARTMENT OF THE INTERIOR
BUREAU OF LAND MANAGEMENT

APPLICATION FOR PERMIT TO DRILL, DEEPEN, OR PLUG BACK

1a. TYPE OF WORK

DRILL ☒

DEEPEN ☐

PLUG BACK ☐

b. TYPE OF WELL

OIL
WELL ☐

GAS
WELL ☒

OTHER

SINGLE
ZONE ☒

MULTIPLE
ZONE ☐

2. NAME OF OPERATOR

Blackwood & Nichols Co., Ltd.

3. ADDRESS OF OPERATOR

P. O. Box 1237, Durango, CO 81302

4. LOCATION OF WELL (Report location clearly and in accordance with any State requirements.)*
At surface

At proposed prod. zone 1595' FNL, 2265' FEL

14. DISTANCE IN MILES AND DIRECTION FROM NEAREST TOWN OR POST OFFICE*

18 miles SE of Ignacio, CO

10. DISTANCE FROM PROPOSED*

LOCATION TO NEAREST
PROPERTY OR LEASE LINE, FT.
(Also to nearest drig. unit line, if any)

2680'

16. NO. OF ACRES IN LEASE

2560

17. NO. OF ACRES ASSIGNED
TO THIS WELL

320

18. DISTANCE FROM PROPOSED LOCATION*

TO NEAREST WELL, DRILLING, COMPLETED,
OR APPLIED FOR, ON THIS LEASE, FT.

484'

19. PROPOSED DEPTH

3255'

20. ROTARY OR CABLE TOOLS

Rotary

21. ELEVATIONS (Show whether DF, RT, GR, etc.)

6340' GL

22. APPROX. DATE WORK WILL START*

November 30, 1989

23.

PROPOSED CASING AND CEMENTING PROGRAM

SIZE OF HOLE	SIZE OF CASING	WEIGHT PER FOOT	SETTING DEPTH	QUANTITY OF CEMENT
12-1/4"	9-5/8"	36#	300'	207 cf/circulate to surface
8-3/4"	7"	23#	3045'	744 cf/circulate to surface
6-1/4"	5-1/2" or 4-1/2"	17#, 11.6#	2945'-3255'	30 cf/circulate to liner top

Propose to spud in the San Jose formation. Will drill a 12-1/4" surface hole to a TD of 300'. Surface casing will be run and cemented with cement returns to surface. WOC 12 hours. Test to 600 psi/30 minutes. Drill an 8-3/4" hole to a TD of 3045' using fresh water mud. No poisonous gasses or abnormal pressures are anticipated. Run intermediate casing and cement with cement returns to surface. WOC 12 hours. Test to 1500 psi/30 minutes. Drill a 6-1/4" hole to a TD of 3255', using water and air. Run a mudlogging unit while drilling this interval. Run the production liner. A 4-1/2" liner will be cemented if the well's natural flow capacity indicates the need for fracture stimulation.

Surface ownership is Bureau of Land Management.

IN ABOVE SPACE DESCRIBE PROPOSED PROGRAM: If proposal is to deepen or plug back, give data on present productive zone and proposed new productive zone. If proposal is to drill or deepen directionally, give pertinent data on subsurface locations and measured and true vertical depths. Give blowout preventer program, if any.

24.

SIGNED

William F. Clark
William F. Clark

TITLE

Operations Manager

DATE

DIST. 3

Sept 18, 1989

(This space for Federal or State office use)

PERMIT NO.

APPROVAL DATE

APPROVED BY

TITLE

CONDITIONS OF APPROVAL, IF ANY:

OK

*See Instructions On Reverse Side

RECEIVED

OCT 19 1989

OIL CON. DIV

APPROVED
AS AMENDED

OCT 17 1989

AREA MANAGER

Submit to Appropriate
District Office
State Lease - 4 copies
Fee Lease - 3 copies

State of New Mexico
Energy, Minerals and Natural Resources Department

Form C-102
Revised 1-1-89

DISTRICT I
P.O. Box 1980, Hobbs, NM 88240

OIL CONSERVATION DIVISION

P.O. Box 2088

Santa Fe, New Mexico 87504-2088

DISTRICT II
P.O. Drawer DD, Artesia, NM 88210

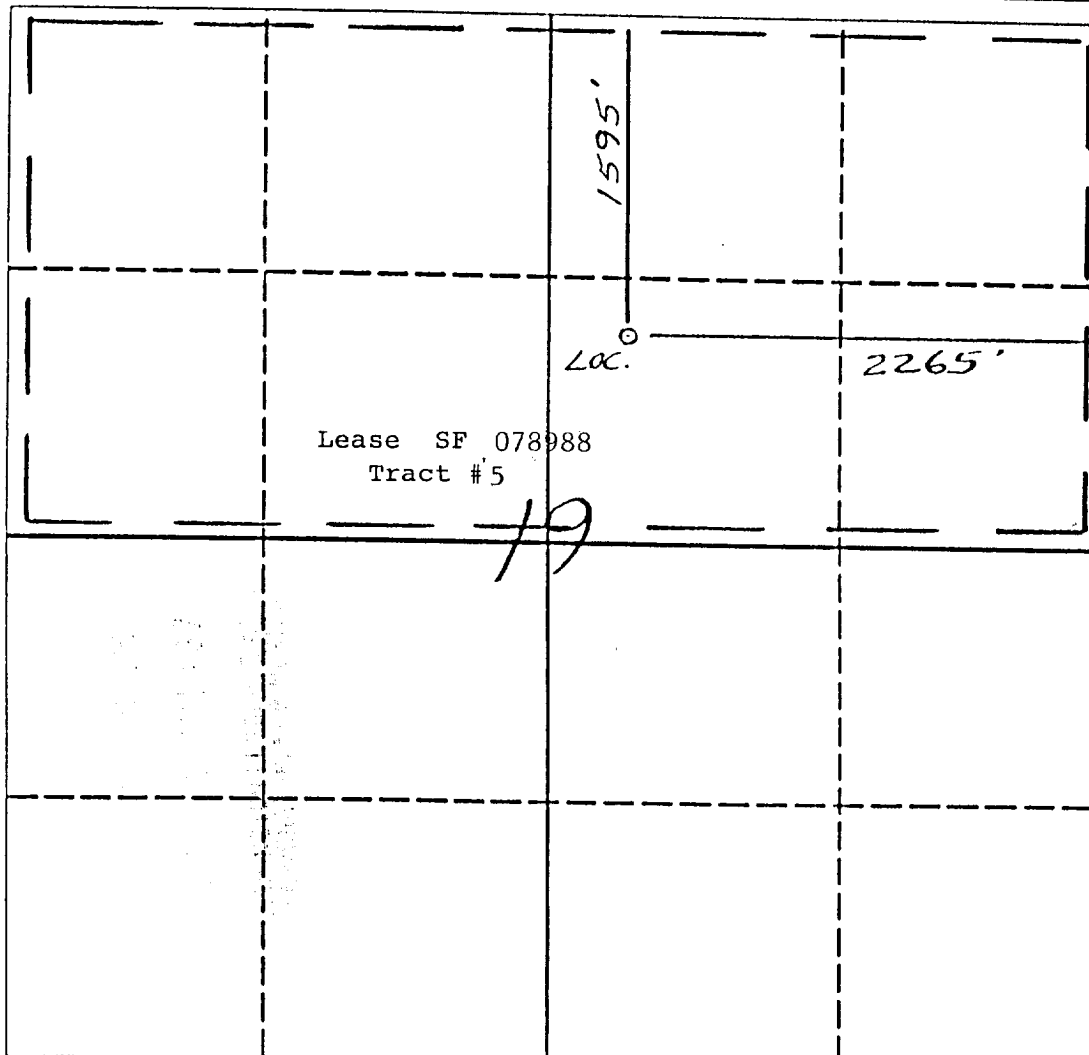
DISTRICT III
1000 Rio Brazos Rd., Aztec, NM 87410

WELL LOCATION AND ACREAGE DEDICATION PLAT

All Distances must be from the outer boundaries of the section

Operator Blackwood & Nichols Co., LTD.			Lease Northeast Blanco Unit		Well No. 436
Unit Letter G	Section 19	Township 31 North	Range 6. West	County San Juan	
Actual Footage Location of Well: 1595 feet from the North line and 2265 feet from the East line					
Ground level Elev. 6340'	Producing Formation Fruitland Coal		Pool Basin Fruitland Coal	Dedicated Acreage: 320.00 Acres	

- Outline the acreage dedicated to the subject well by colored pencil or hatchure marks on the plat below.
- If more than one lease is dedicated to the well, outline each and identify the ownership thereof (both as to working interest and royalty).
- If more than one lease of different ownership is dedicated to the well, have the interest of all owners been consolidated by communitization, unitization, force-pooling, etc.?
☐ Yes ☐ No If answer is "yes" type of consolidation N/A
If answer is "no" list the owners and tract descriptions which have actually been consolidated. (Use reverse side of this form if necessary).
No allowable will be assigned to the well until all interests have been consolidated (by communitization, unitization, forced-pooling, or otherwise) or until a non-standard unit, eliminating such interest, has been approved by the Division.



OPERATOR CERTIFICATION

I hereby certify that the information contained herein is true and complete to the best of my knowledge and belief.

William F. Clark
Signature

William F. Clark

Printed Name

Operations Manager

Position

Blackwood & Nichols

Company

August 9, 1989

Date

SURVEYOR CERTIFICATION

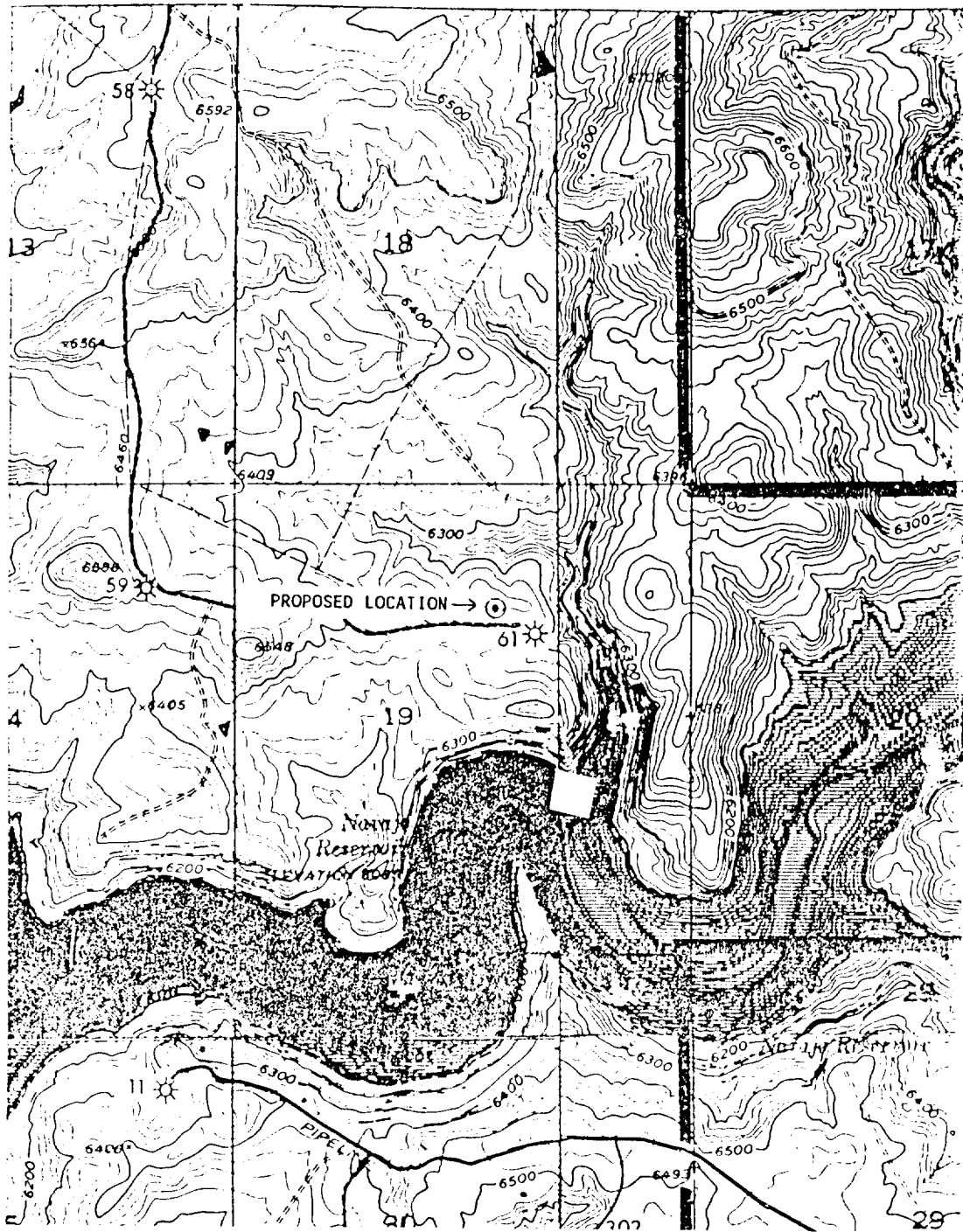
I hereby certify that the well location shown on this plat was plotted from field notes, actual surveys made by me or under my supervision, and that the same is true and correct to the best of my knowledge and belief.

Ngale C. Edwards
Date Surveyed
Signature of Seal of Professional Surveyor

Professional Surveyor

Ngale C. Edwards
Certificate No.

6857



VICINITY MAP

Blackwood & Nichols Co., Ltd.
 Northeast Blanco Unit No. 436
 1595' FNL, 2265' FEL
 Section 19, T31N, R6W
 San Juan County, New Mexico