

UNITED STATES
DEPARTMENT OF THE INTERIOR
BUREAU OF LAND MANAGEMENT

SUBMIT IN TRIPLICATE*
(Other instructions on
reverse side)

30-045-27520
Form approved.
Budget Bureau No. 1004-0136
Expires August 31, 1985

APPLICATION FOR PERMIT TO DRILL, DEEPEN, OR PLUG BACK

1a. TYPE OF WORK

DRILL ☒

DEEPEN ☐

PLUG BACK ☐

b. TYPE OF WELL

OIL
WELL ☐

GAS
WELL ☒

OTHER Coal Seam

SINGLE
ZONE ☒

MULTIPLE
ZONE ☐

2. NAME OF OPERATOR

Amoco Production Company

ATTN: J. L. Hampton

3. ADDRESS OF OPERATOR

P. O. Box 800 Denver, Colorado 80201

4. LOCATION OF WELL (Report location clearly and in accordance with any State requirements.)*

At surface

870' FSL, 1210' FWL SW/SW

At proposed prod. zone

same

14. DISTANCE IN MILES AND DIRECTION FROM NEAREST TOWN OR POST OFFICE*

7 miles from Aztec, New Mexico

10. DISTANCE FROM PROPOSED*

LOCATION TO NEAREST
PROPERTY OR LEASE LINE, FT. 870'
(Also to nearest drlg. unit line, if any)

16. NO. OF ACRES IN LEASE

880.38

17. NO. OF ACRES ASSIGNED
TO THIS WELL

920 acres W 1/2 32.6-64

13. DISTANCE FROM PROPOSED LOCATION*

TO NEAREST WELL, DRILLING, COMPLETED,
OR APPLIED FOR, ON THIS LEASE, FT.

19. PROPOSED DEPTH

2955' TD

20. ROTARY OR CABLE TOOLS

Rotary

21. ELEVATIONS (Show whether DF, RT, GR, etc.)

6223' GR

This action is subject to technical and

processed at review processing center 3160.3

and approved PROPOSED CASING AND CEMENTING PROGRAM

22. APPROX. DATE WORK WILL START*

As soon as permitted

23.

SIZE OF HOLE	SIZE OF CASING	WEIGHT PER FOOT	SETTING DEPTH	QUANTITY OF CEMENT
12 1/4"	8 5/8"	24#	250'	250 cf (cement to surface)
7 7/8"	5 1/2"	17#	2955' (TD)	827 cf (cement to surface)

Notice of Staking was submitted: 9/11/89

Lease Description:

See attached lease and Notice of Lease Segregation

RECEIVED
OCT 27 1989
OIL CON. DIV.
DIST. 3

IN ABOVE SPACE DESCRIBE PROPOSED PROGRAM: If proposal is to deepen or plug back, give data on present productive zone and proposed new productive zone. If proposal is to drill or deepen directionally, give pertinent data on subsurface locations and measured and true vertical depths. Give blowout preventer program, if any.

24. J.L. Hampton

SIGNED

J.L. Hampton/cub

TITLE Sr. Staff Admin. Supv.

DATE

9/28/89

(This space for Federal or State office use)

APPROVED
AS AMENDED

PERMIT NO.

APPROVAL DATE

APPROVED BY

TITLE

CONDITIONS OF APPROVAL, IF ANY:

OK
(E)

NMOCD

OCT 24 1989
pi AREA MANAGER

*See Instructions On Reverse Side

Submit to Appropriate
District Office
State Lease - 4 copies
Fee Lease - 3 copies

State of New Mexico
Energy, Minerals and Natural Resources Department

Form C-102
Revised 1-1-89

OIL CONSERVATION DIVISION

DISTRICT I
P.O. Box 1980, Hobbs, NM 88240

P.O. Box 2088
Santa Fe, New Mexico 87504-2088

DISTRICT II
P.O. Drawer DD, Artesia, NM 88210

DISTRICT III
1000 Rio Brazos Rd., Aztec, NM 87410

WELL LOCATION AND ACREAGE DEDICATION PLAT

All Distances must be from the outer boundaries of the section

Operator AMOCO PRODUCTION COMPANY			Lease STEWART /B/		Well No. # 1
Unit Letter M	Section 28	Township 30 NORTH	Range 10 WEST	County SAN JUAN	

Actual Footage Location of Well:

870 feet from the		SOUTH line and		1210 feet from the		WEST line	
Ground level Elev. 6223	Producing Formation Fruitland Coal		Pool Basin Fruitland Coal Gas		Dedicated Acreage: 4 1/2 - 320 Acres		

1. Outline the acreage dedicated to the subject well by colored pencil or hatchure marks on the plat below.

326.64

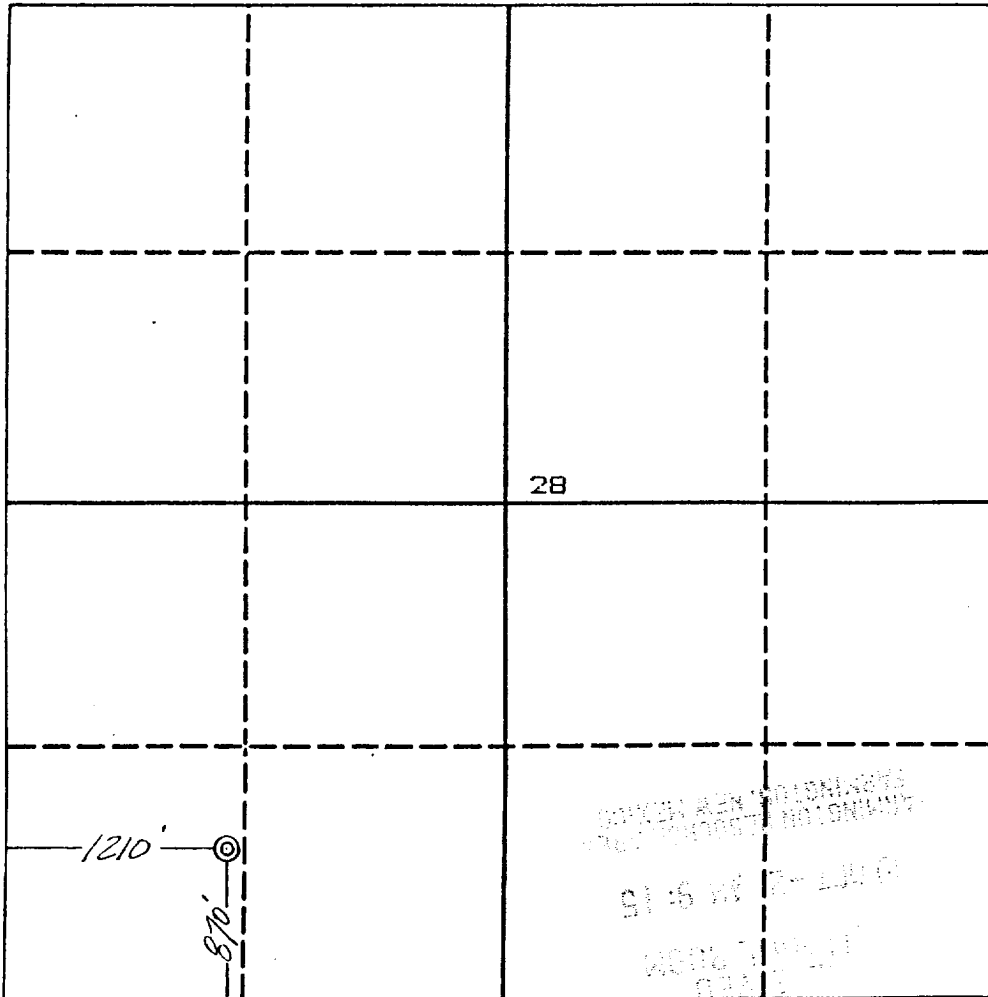
2. If more than one lease is dedicated to the well, outline each and identify the ownership thereof (both as to working interest and royalty).

3. If more than one lease of different ownership is dedicated to the well, have the interest of all owners been consolidated by communitization, unitization, force-pooling, etc.?

☐ Yes ☐ No If answer is "yes" type of consolidation

If answer is "no" list the owners and tract descriptions which have actually been consolidated. (Use reverse side of this form if necessary.)

No allowable will be assigned to the well until all interests have been consolidated (by communitization, unitization, forced-pooling, or otherwise) or until a non-standard unit, eliminating such interest, has been approved by the Division.



OPERATOR CERTIFICATION

I hereby certify that the information contained herein is true and complete to the best of my knowledge and belief.

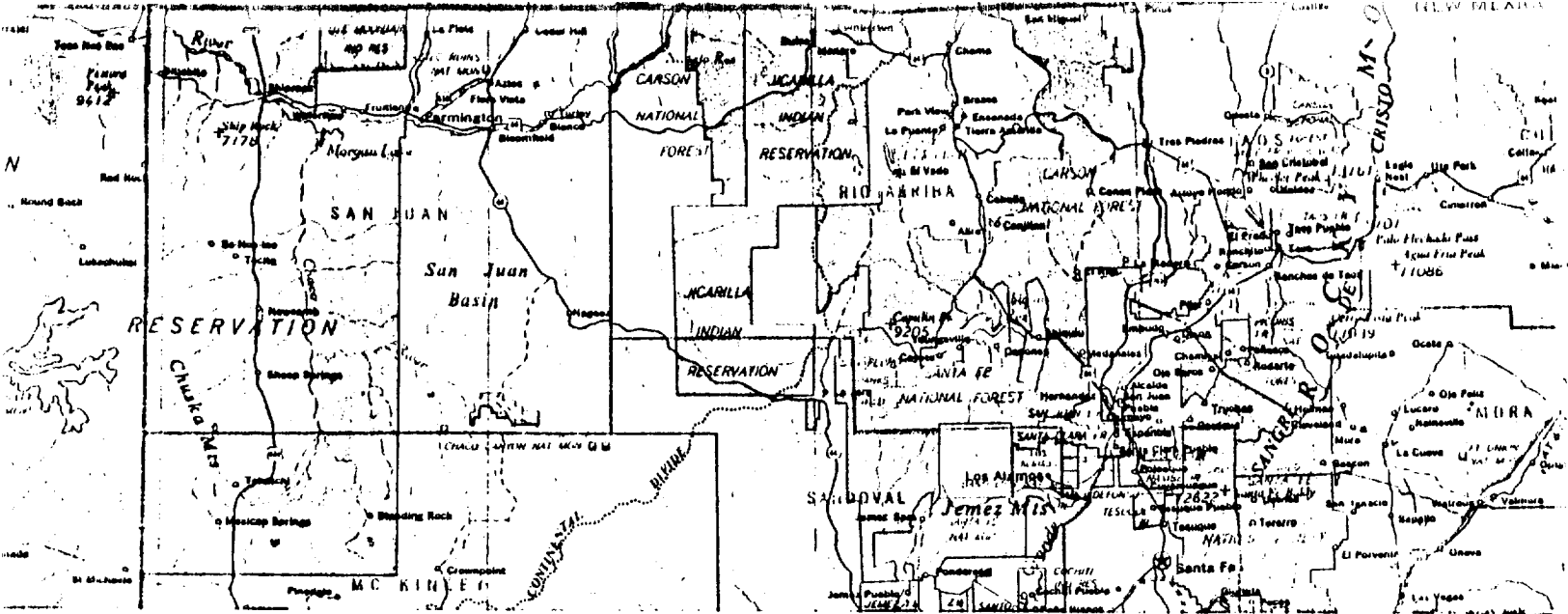
Signature
J.L. Hampton
Printed Name
J.L. Hampton
Position
Sr. Staff Admin. Supv.
Company
Amoco Prod. Co.
Date
9/6/89

SURVEYOR CERTIFICATION

I hereby certify that the well location shown on this plat was plotted from field notes of actual surveys made by me or under my supervision, and that the same is true and correct to the best of my knowledge and belief.

Date Surveyed
August 24, 1989

Signature & Seal of
Professional Surveyor
GARY D. VANN
7016
Gary
Certification
7016



STEWART /B/ # 1
 870' F/SL 1210' F/WL
 SEC. 28, T30N, R10W, NMPM
 RAIL POINT: 149 miles from Montrose CO.
 MUD POINT: 7 miles from Aztec, NM
 CEMENT POINT: 21 miles from Farmington, NM

