

UNITED STATES
DEPARTMENT OF THE INTERIOR
GEOLOGICAL SURVEY

30-045-27548

APPLICATION FOR PERMIT TO DRILL, DEEPEN, OR PLUG BACK

1a. TYPE OF WORK

DRILL ☒DEEPEN ☐PLUG BACK ☐

b. TYPE OF WELL

OIL
WELL ☐GAS
WELL ☒OTHER ☐SINGLE
ZONE ☒MULTIPLE
ZONE ☐

2. NAME OF OPERATOR

Blackwood and Nichols Co., LTD

3. ADDRESS OF OPERATOR

P.O. Box 1237, Durango, CO 81302-1237

4. LOCATION OF WELL (Report location clearly and in accordance with any State requirements.)*

At surface
790' FSL - 790' FWL

At proposed prod. zone

5. LEASE DESIGNATION AND SERIAL NO.

NM 03358

6. IF INDIAN, ALLOTTEE OR TRIBE NAME

7. UNIT AGREEMENT NAME

Northeast Blanco

8. FARM OR LEASE NAME

Northeast Blanco Uni

9. WELL NO.

464

10. FIELD AND POOL, OR WILDCAT

Basin Fruitland Coal

11. SEC., T., R., M., OR BLK.
AND SURVEY OR AREA

Sec. 10, T31N, R7W

12. COUNTY OR PARISH

San Juan

13. STATE

NM

14. DISTANCE IN MILES AND DIRECTION FROM NEAREST TOWN OR POST OFFICE*

19 miles NE of Blanco, NM

15. DISTANCE FROM PROPOSED*

LOCATION TO NEAREST
PROPERTY OR LEASE LINE, FT.
(Also to nearest drlg. unit line, if any)

790'

16. NO. OF ACRES IN LEASE

2396.77

17. NO. OF ACRES ASSIGNED

TO THIS WELL 320

18. DISTANCE FROM PROPOSED LOCATION*

TO NEAREST WELL, DRILLING, COMPLETED, 200'
OR APPLIED FOR, ON THIS LEASE, FT.

19. PROPOSED DEPTH

3372'

20. ROTARY OR CABLE TOOLS

Rotary

21. ELEVATIONS (Show whether DF, RT, GR, etc.)

6615 GL

22. APPROX. DATE WORK WILL START

12/15/89

23.

PROPOSED CASING AND CEMENTING PROGRAM

SIZE OF HOLE	SIZE OF CASING	WEIGHT PER FOOT	SETTING DEPTH	QUANTITY OF CEMENT
12 1/4"	9 5/8"	36#	300'	295 cuft to circulate
8 3/4"	7"	23#	3079'	940 cuft to circulate
6 1/4"	5 1/2"	17#	2079' - 3372'	39 cuft to circulate

Propose to spud in the San Jose formation. Will drill a 12 1/4" hole to a TD of 300'. Surface casing will be run and cemented with cement returns to surface. WOC 12 hours. Pressure test to 600 psi/30 mins. Drill an 8 3/4" hole to a TD of 3079' with fresh water mud. No abnormal pressures or poisonous gases are anticipated. Run and cement intermediate casing with cement returns to surface. WOC 12 hours. Test to 1500 psi/30 mins. Drill a 6 1/4" hole through the Fruitland coals using water and air. A 5 1/2" liner will be run. The liner may or may not be cemented, depending on the wells natural producing ability.

RECEIVED

DEC 11 1989

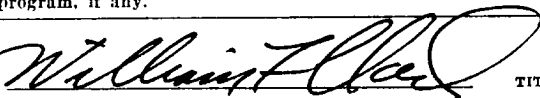
OIL CON. DIV

Surface Ownership is BLM

IN ABOVE SPACE DESCRIBE PROPOSED PROGRAM: If proposal is to deepen or plug back, give data on proposed productive zone and proposed new product zone. If proposal is to drill or deepen directionally, give pertinent data on subsurface locations and measured and true vertical depths. Give blowo preventer program, if any.

24.

SIGNED



TITLE

Operations Manager

DATE

November 17, 19

(This space for Federal or State office use)

PERMIT NO.

APPROVAL DATE

APPROVED BY

TITLE

CONDITIONS OF APPROVAL, IF ANY:

APPROVED
AS AMENDED

DEC 07 1989

AREA MANAGER

*See Instructions On Reverse Side

**NEW MEXICO OIL CONSERVATION COMMISSION
WELL LOCATION AND ACREAGE DEDICATION PLAT**

Form C-102
Supersedes C-128
Effective 1-1-65

All distances must be from the outer boundaries of the Section.

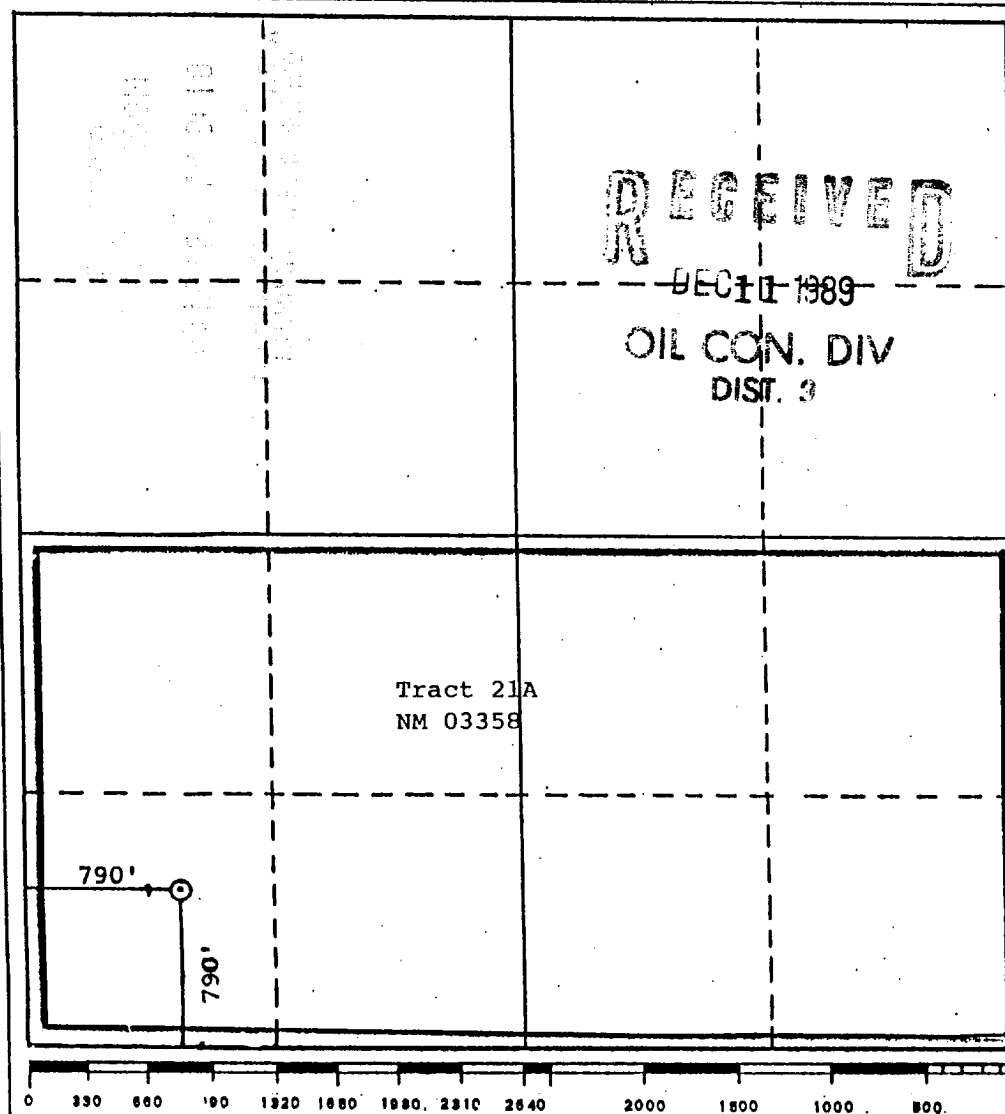
Operator BLACKWOOD & NICHOLS CO., LTD.			Lease NORTHEAST BLANCO UNIT		Well No. 464
Unit Letter M	Section 10	Township 31 North	Range 7 West	County San Juan County	
Actual Footage Location of Well: 790 feet from the south line and 790 feet from the west line					
Ground Level Elev: 6615 (UG)	Producing Formation Fruitland Coal		Pool Basin Fruitland Coal	Dedicated Acreage: 320 Acres Acres	

1. Outline the acreage dedicated to the subject well by colored pencil or hachure marks on the plat below.
2. If more than one lease is dedicated to the well, outline each and identify the ownership thereof (both as to working interest and royalty).
3. If more than one lease of different ownership is dedicated to the well, have the interests of all owners been consolidated by communitization, unitization, force-pooling, etc?

☒ Yes ☐ No If answer is "yes," type of consolidation Unitized

If answer is "no," list the owners and tract descriptions which have actually been consolidated. (Use reverse side of this form if necessary.) _____

No allowable will be assigned to the well until all interests have been consolidated (by communitization, unitization, forced-pooling, or otherwise) or until a non-standard unit, eliminating such interests, has been approved by the Commission.



CERTIFICATION

I hereby certify that the information contained herein is true and complete to the best of my knowledge and belief.

William F. Clark

Name
William F. Clark

Position
Operations Manager

Company
Blackwood & Nichols Co., Ltd.

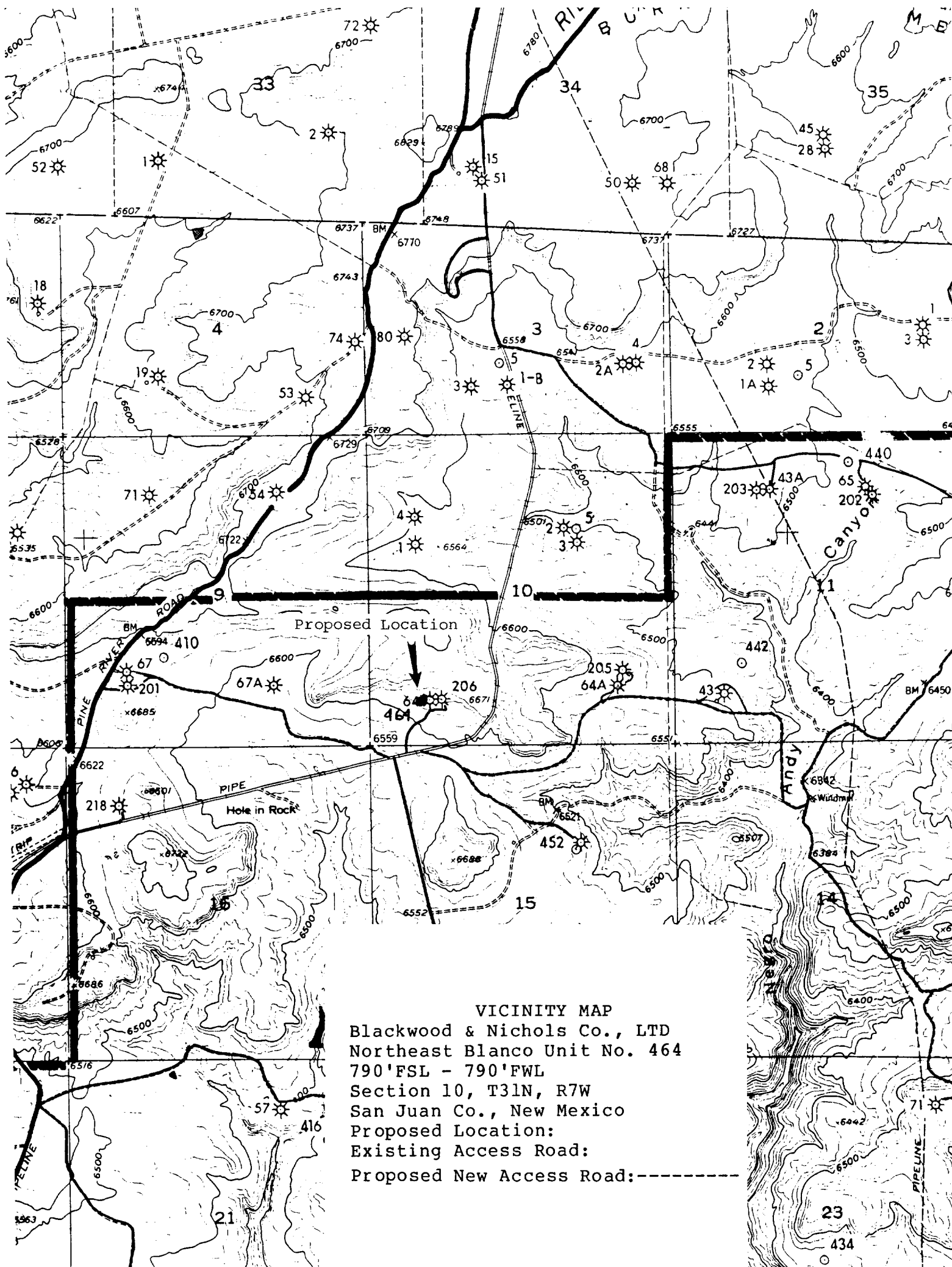
Date
November 15, 1989

I hereby certify that the well location shown on this plat was plotted from field notes of actual surveys made by me or under my supervision, and that the same is true and correct to the best of my knowledge and belief.

Date Surveyed
November 8, 1989

Registered Professional Engineer
and/or Land Surveyor
Allison L. Kroeger
Allison L. Kroeger, PLS

Certificate No.
7922



VICINITY MAP
 Blackwood & Nichols Co., LTD
 Northeast Blanco Unit No. 464
 790'FSL - 790'FWL
 Section 10, T31N, R7W
 San Juan Co., New Mexico
 Proposed Location:
 Existing Access Road:
 Proposed New Access Road:-----