

UNITED STATES
DEPARTMENT OF THE INTERIOR
BUREAU OF LAND MANAGEMENT

30-145-27553

APPLICATION FOR PERMIT TO DRILL, DEEPEN, OR PLUG BACK

1a. TYPE OF WORK

DRILL ☐

DEEPEEN ☒

PLUG BACK ☐

b. TYPE OF WELL

OIL
WELL ☐

GAS
WELL ☒

OTHER

SINGLE
ZONE ☒

MULTIPLE
ZONE ☐

2. NAME OF OPERATOR

Phillips Petroleum Company

3. ADDRESS OF OPERATOR

5525 Hwy 64 NBU 3004, Farmington, NM 87401

4. LOCATION OF WELL (Report location clearly and in accordance with any State requirements.)*

At surface Unit P, 500' FSL & 880' FEL

At proposed prod. zone Same as above

14. DISTANCE IN MILES AND DIRECTION FROM NEAREST TOWN OR POST OFFICE*

32 miles southeast of Ignacio, CO

10. DISTANCE FROM PROPOSED*

LOCATION TO NEAREST
PROPERTY OR LEASE LINE, FT.
(Also to nearest drig. unit line, if any) 820'

16. NO. OF ACRES IN LEASE

820'

17. NO. OF ACRES ASSIGNED

TO THIS WELL
325.67

18. DISTANCE FROM PROPOSED LOCATION*

TO NEAREST WELL, DRILLING, COMPLETED,
OR APPLIED FOR, ON THIS LEASE, FT. + 1500'

19. PROPOSED DEPTH

6000'

20. ROTARY OR CABLE TOOLS

Rotary

21. ELEVATIONS (Show whether DF, RT, GR, etc.)

6481' GL

22. APPROX. DATE WORK WILL START*

Upon Approval

23.

PROPOSED CASING AND CEMENTING PROGRAM

SIZE OF HOLE	SIZE OF CASING	WEIGHT PER FOOT	SETTING DEPTH	QUANTITY OF CEMENT
6-1/4"	4-1/2"	11.6#	6000'	270 Sx Cl B

Phillips Petroleum Company plans to deepen the subject well to the Mesa Verde formation as per the attached procedure.

The proration unit will remain the same for both the Mesa Verde and Fruitland formations. MV order #R-1066, Fruitland order #R-9099.

The location remains "orthodox" due to the unusual proration unit boundaries.

IN ABOVE SPACE DESCRIBE PROPOSED PROGRAM: If proposal is to deepen or plug back, give data on present productive zone and proposed new productive zone. If proposal is to drill or deepen directionally, give pertinent data on subsurface locations and measured and true vertical depths. Give blowout preventer program, if any.

24.

SIGNED L. E. Robinson

TITLE Sr. Drlg. & Prod. Engr.

DATE 10-08-91

(This space for Federal or State office use)

PERMIT NO. _____

APPROVAL DATE _____

APPROVED BY _____

TITLE _____

CONDITIONS OF APPROVAL, IF ANY:

APPROVED
AS AMENDED

OCT 10 1991

AREA MANAGER

NM000

*See Instructions On Reverse Side

Submit to Appropriate
District Office
State Lease - 4 copies
Fee Lease - 3 copies

State of New Mexico
Energy, Minerals and Natural Resources Department

Form C-102
Revised 1-1-89

OIL CONSERVATION DIVISION

P.O. Box 2088

Santa Fe, New Mexico 87504-2088

DISTRICT I
P.O. Box 1980, Hobbs, NM 88240

DISTRICT II
P.O. Drawer DD, Artesia, NM 88210

DISTRICT III
1000 Rio Brazos Rd., Aztec, NM 87410

WELL LOCATION AND ACREAGE DEDICATION PLAT

All Distances must be from the outer boundaries of the section

Operator PHILLIPS PETROLEUM COMPANY			Lease SAN JUAN 32-7		Well No. 201
Unit Letter P	Section 7	Township 31N	Range 7W	County NMPM San Juan	

Actual Footage Location of Well:

500 feet from the South line and 880 feet from the East line	Ground level Elev. 6481	Producing Formation MESA VERDE Fruitland Coal	Pool BLANCO MESA VERDE Basin-Fruitland Coal	Dedicated Acreage: 325.67 Acres
--	----------------------------	--	--	------------------------------------

1. Outline the acreage dedicated to the subject well by colored pencil or hatchure marks on the plat below.

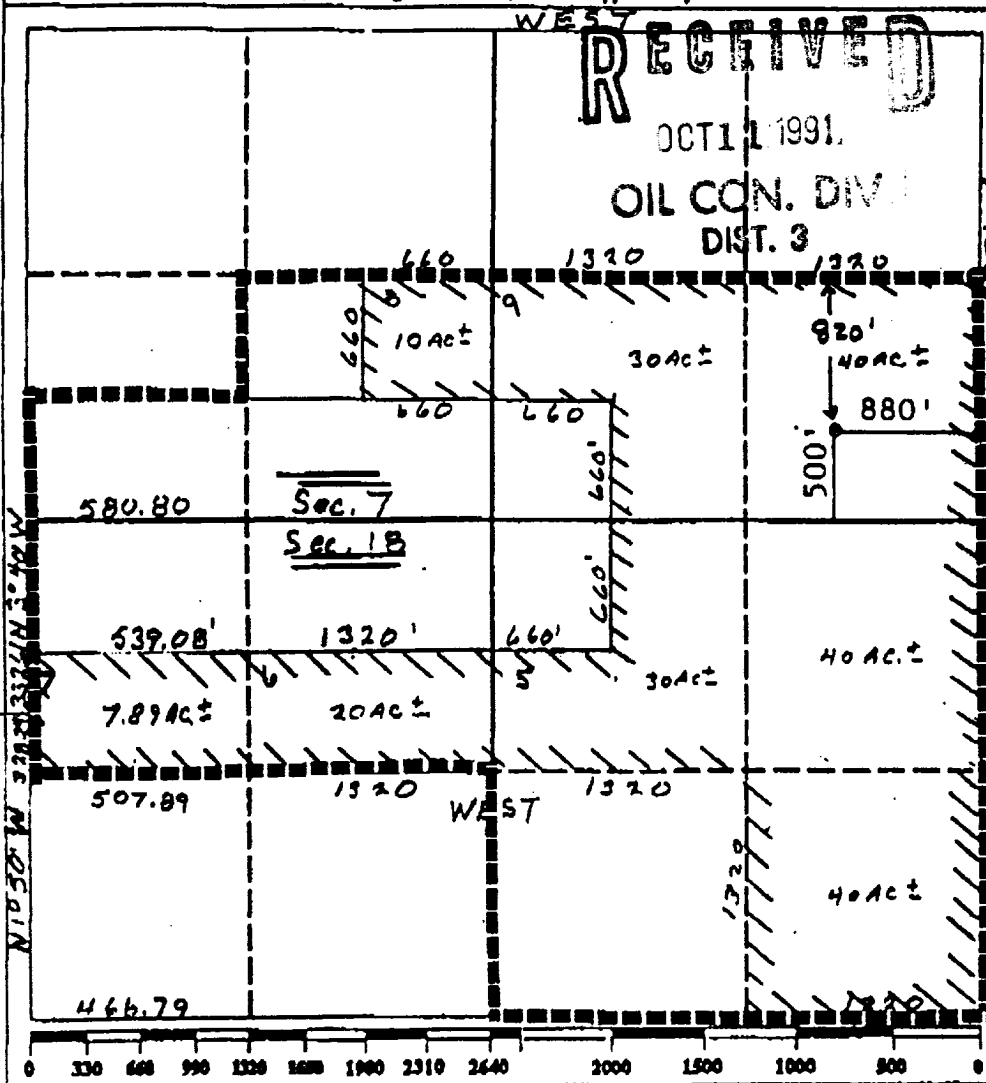
2. If more than one lease is dedicated to the well, outline each and identify the ownership thereof (both as to working interest and royalty).

3. If more than one lease of different ownership is dedicated to the well, have the interest of all owners been consolidated by communitization, unitization, force-pooling, etc.?

☒ Yes ☐ No If answer is "yes" type of consolidation UNITIZED

If answer is "no" list the owners and tract descriptions which have actually been consolidated. (Use reverse side of this form if necessary.)

No allowable will be assigned to the well until all interests have been consolidated (by communitization, unitization, forced-pooling, or otherwise) or until a non-standard unit, aggregating such interest, has been approved by the Division.



OPERATOR CERTIFICATION

I hereby certify that the information contained herein is true and complete to the best of my knowledge and belief.

Signature <i>L. E. Robinson</i>
Printed Name L. E. Robinson
Position Sr. Drlg. & Prod. Engr.
Company Phillips Petroleum Co.
Date October 8, 1991

SURVEYOR CERTIFICATION

I hereby certify that the well location shown on this plat was plotted from field notes of actual surveys made by me or under my supervision, and that the same is true and correct to the best of my knowledge and belief.

Date November 14, 1989
Signature <i>[Signature]</i>
Professional Surveyor NEW MEXICO 9672
Certificate No. 9672

DRILLING & COMPLETION PROGNOSIS

WELL NAME: San Juan 32-7 Unit #201 MV FIELD: Ignacio Blanco Mesa Verde
LOCATION: SE/4 SE/4 Sec. 7 T31N R7W ELEVATION: 6481' GR
COUNTY: San Juan STATE: NM TOTAL DEPTH: 6000'

CASING RECORD	: CASING SIZE	: WT & GRADE	: DEPTH SET	: CEMENT	: TOP CEMENT
Surface	: 9-5/8"	: 32.40 H-40	: 533'	: 273 sx	: Surface
Intermediate	: 7"	: 23# J-55	: 3209'	: 450 sx	: Surface
Open Hole	: N/A	: N/A	: 3362'	: N/A	: N/A

WELLHEAD EQUIPMENT: Casinghead:10" 900 OCT C-20 Tubinghead:10" 900 x 6" 900
Bonnett: 6" 900 X 2-7/8 EUE

TUBING EQUIPMENT: None

FORMATION TOPS:	Ojo Alamo	2228'	Cliff House	5303'
	Kirtland	2328'	Menefee	5404'
	Fruitland	3000'	Point Lookout	5645'
	Pictured Cliffs	3258'		
	Lewis	3536'		

PERFORATIONS: None

STIMULATION: None

RECOMMENDED PROCEDURE:

1. MOL & RU Drilling Rig
2. Hold safety meeting
3. Pick up 6-1/4" drill bit and Mist drill to 6000'
4. Log open hole with DIL/SP/GR/SD/Caliper/Epithermal Neutron and Temperature logs.
5. Run 4-1/2" liner with cement nose guide shoe & flapper float collar.
Cement with 270 sx (454 cu. ft.) of Class "B" w/4% gel, 6-1/4#
gilsonite/sk & 0.6% halad 9.
6. WOC for 18 hours.
7. PU 3-7/8" bit on 2-3/8" tubing and CO to PBTD.
8. Pressure test casing to 3500#.

DRILLING & COMPLETION PROGNOSIS

RECOMMENDED PROCEDURE (cont'd)

9. Spot 500 gallons of 7-1/2% HCL across interval to be perforated.
10. TOH and RU Perforators.
11. Run GR/CCL and perforate Mesa Verde formation as determined by open hole logs.
12. Establish a rate into perforations. Shut down and determine ISIP.
13. Drop balls in 1000 gallons of 7-1/2% HCL and ball off perforations if possible.
14. Run wireline junk basket and retrieve or knock off balls.
15. Frac well.
16. Flush well to 100 feet above the top perforation.
17. Record SICP for one hour or until pressure drops to zero.
18. CO with gas to TD and blow well with compressor until well quits making sand.
19. Land tubing at approximately 6000'.
20. ND BOP & NU Wellhead, pump out plug and gauge well up tubing.
21. Release Rig.


L. E. Robinson
Sr. Drlg. & Prod. Engr.