

RECEIVED
UNITED STATES
DEPARTMENT OF THE INTERIOR
BUREAU OF LAND MANAGEMENT
DEC 18 1989

SUBMIT IN TRIPLICATE*
(Other instructions on
reverse side)

30-045-27553
Form approved,
Budget Bureau No. 1004-0136
Expires August 31, 1985

APPLICATION FOR RECONSTRUCTION, DEEPEN, OR PLUG BACK

1a. TYPE OF WORK

DRILL ☒

DIST. 3

DEEPEN ☐

PLUG BACK ☐

b. TYPE OF WELL

OIL
WELL ☐

GAS
WELL ☒

OTHER

SINGLE
ZONE ☒

MULTIPLE
ZONE ☐

2. NAME OF OPERATOR

Blackwood & Nichols Co., Ltd.

3. ADDRESS OF OPERATOR

P. O. Box 1237, Durango, CO 81032

4. LOCATION OF WELL (Report location clearly and in accordance with any State requirements.)*

At surface

At proposed prod. zone

1156' 530' FNL, 903' 2135' FEL

14. DISTANCE IN MILES AND DIRECTION FROM NEAREST TOWN OR POST OFFICE*

18 miles SE of Ignacio, Colorado

15. DISTANCE FROM PROPOSED*

LOCATION TO NEAREST
PROPERTY OR LEASE LINE, FT.

(Also to nearest drlg. unit lde, if any)

530'

18. DISTANCE FROM PROPOSED LOCATION*

TO NEAREST WELL, DRILLING, COMPLETED,
OR APPLIED FOR, ON THIS LEASE, FT.

483'

21. ELEVATIONS (Show whether DF, RT, GR, etc.)

6520

6475' GL

DRILLING OPERATIONS AUTHORIZED AND APPROX. DATE WORK WILL START*
SUBJECT TO COMPLIANCE WITH ATTACHED
November 30, 1989

23.

PROPOSED CASING AND CEMENTING PROGRAM

This action is subject to technical and
procedural review pursuant to 43 CFR 3165.3
and appeal pursuant to 43 CFR 3165.4.

SIZE OF HOLE	SIZE OF CASING	WEIGHT PER FOOT	SETTING DEPTH
12-1/4"	9-5/8"	36#	300'
8-3/4"	7"	23#	3040'
6-1/4"	5-1/2" or 4-1/2"	17#, 11.6#	2940'-3270'

207 cf/circulate to surface
744 cf/circulate to surface
30 cf/circulate to liner top

Propose to spud in the San Jose formation. Will drill a 12-1/4" surface hole to a TD of 300'. Surface casing will be run and cemented with cement returns to surface. WOC 12 hours. Test to 600 psi/30 minutes. Drill an 8-3/4" hole to a TD of 3040' using fresh water mud. No poisonous gasses or abnormal pressures are anticipated. Run intermediate casing and cement with cement returns to surface. WOC 12 hours. Test to 1500 psi/30 minutes. Drill a 6-1/4" hole to a TD of 3270', using water and air. Run a mudlogging unit while drilling this interval. Run the production liner. A 4-1/2" liner will be cemented if the well's natural flow capacity indicates the need for fracture stimulation.

Surface ownership is Bureau of Land Management.

IN ABOVE SPACE DESCRIBE PROPOSED PROGRAM: If proposal is to deepen or plug back, give data on present productive zone and proposed new productive zone. If proposal is to drill or deepen directionally, give pertinent data on subsurface locations and measured and true vertical depths. Give blowout preventer program, if any.

24.

SIGNED William F. Clark

TITLE Operations Manager

DATE Sept 26, 1989

(This space for Federal or State office use)

PERMIT NO. _____

APPROVAL DATE _____

APPROVED BY _____

TITLE _____

CONDITIONS OF APPROVAL, IF ANY:

**APPROVED
AS AMENDED**

DEC 14 1989

AREA MANAGER

NMOCD

*See Instructions On Reverse Side

**NEW MEXICO OIL CONSERVATION COMMISSION
WELL LOCATION AND ACREAGE DEDICATION PLAT**

Form C-102
Supersedes C-128
Effective 1-1-65

All distances must be from the outer boundaries of the Section.

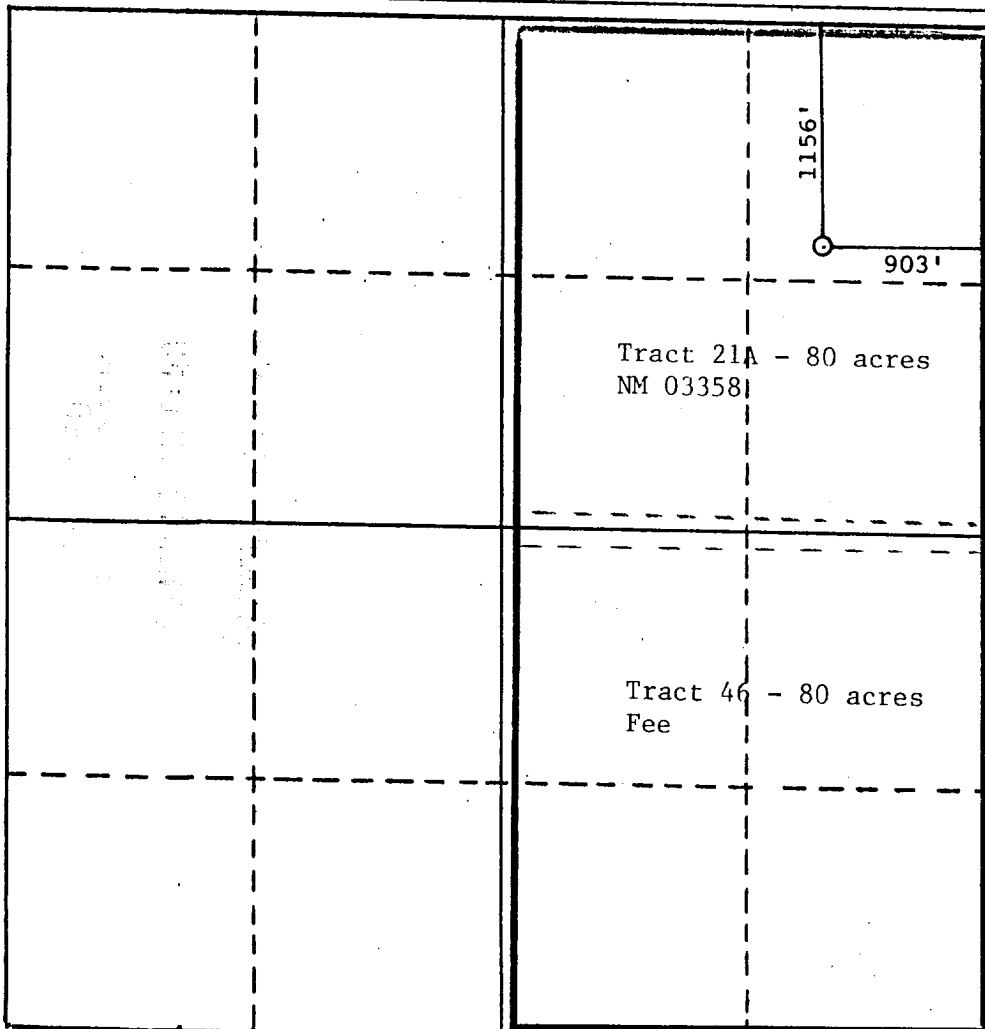
Operator BLACKWOOD & NICHOLS CO., LTD.			Lease NORTHEAST BLANCO UNIT		Well No. 440
Unit Letter A	Section 11	Township 31 North	Range 7 West	County San Juan County	
Actual Footage Location of Well: 1156 feet from the north line and 903 feet from the east line					
Ground Level Elev: 6520 (UG)	Producing Formation Fruitland Coal		Pool Basin Fruitland Coal		Dedicated Acreage: 320.0 Acres

1. Outline the acreage dedicated to the subject well by colored pencil or hachure marks on the plat below.
2. If more than one lease is dedicated to the well, outline each and identify the ownership thereof (both as to working interest and royalty).
3. If more than one lease of different ownership is dedicated to the well, have the interests of all owners been consolidated by communitization, unitization, force-pooling, etc?

☒ Yes ☐ No If answer is "yes," type of consolidation Unitization

If answer is "no," list the owners and tract descriptions which have actually been consolidated. (Use reverse side of this form if necessary.) _____

No allowable will be assigned to the well until all interests have been consolidated (by communitization, unitization, forced-pooling, or otherwise) or until a non-standard unit, eliminating such interests, has been approved by the Commission.



CERTIFICATION

I hereby certify that the information contained herein is true and complete to the best of my knowledge and belief.

William F. Clark

Name
William F. Clark

Position
Operations Manager

Company
Blackwood & Nichols Co., Ltd.

Date
November 13, 1989

I hereby certify that the well location shown on this plat was plotted from field notes of actual surveys made by me or under my supervision, and that the same is true and correct to the best of my knowledge and belief.

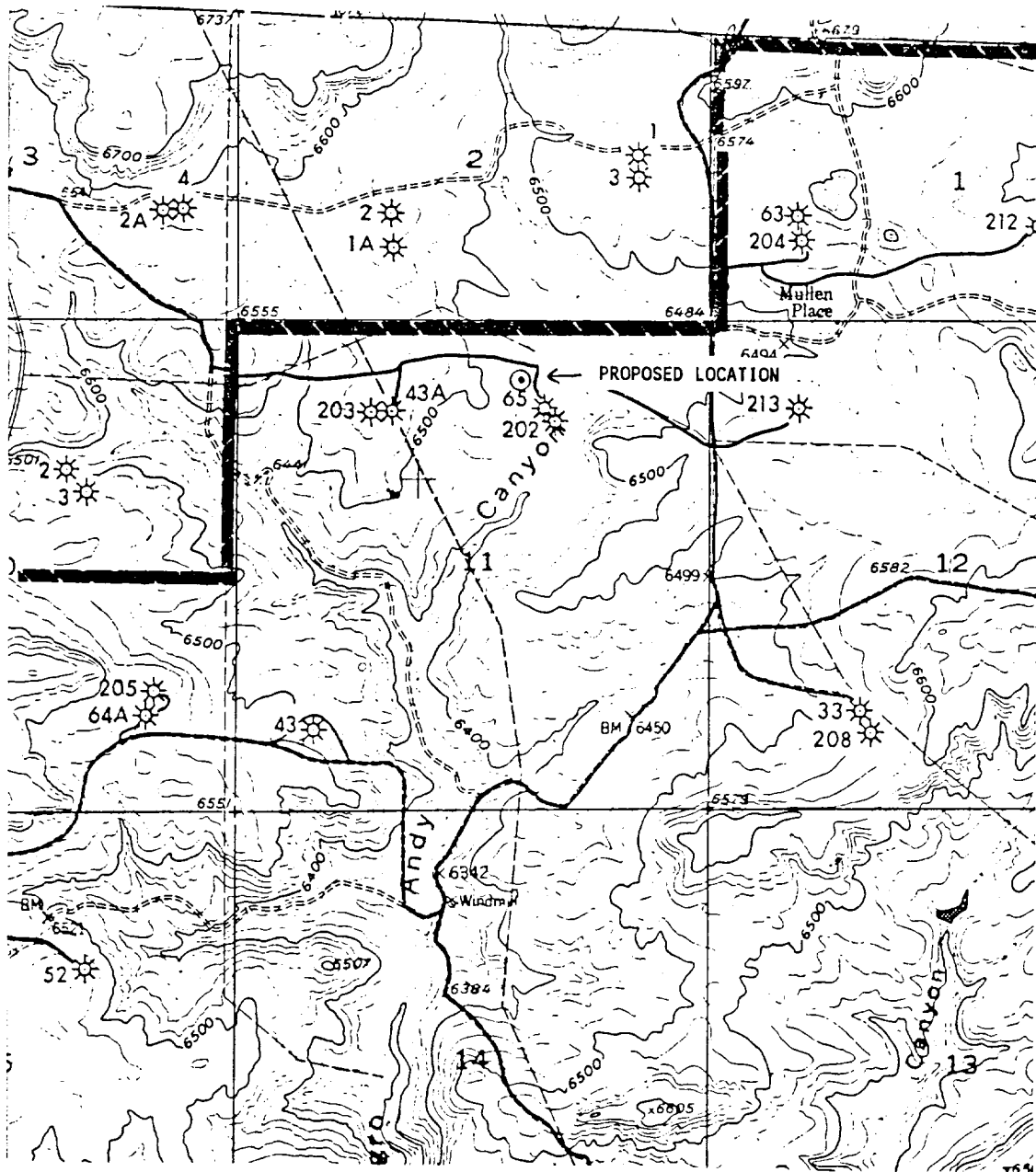
Date Surveyed
November 8, 1989

Registered Professional Engineer and/or Land Surveyor

Allison L. Kroeger
Allison L. Kroeger, PLS

Certificate No.

7922



T
31
N

R7W

VICINITY MAP

Blackwood & Nichols Co., Ltd.
 Northeast Blanco Unit No. 440
 530' FNL, 2135' FEL
 Section 11, T31N, R7W
 San Juan County, New Mexico