

UNITED STATES
DEPARTMENT OF THE INTERIOR
GEOLOGICAL SURVEY

APPLICATION FOR PERMIT TO DRILL, DEEPEN, OR PLUG BACK

1a. TYPE OF WORK

DRILL ☒DEEPEN ☐PLUG BACK ☐

b. TYPE OF WELL

OIL
WELL ☐GAS
WELL ☒OTHER ☐SINGLE
ZONE ☒MULTIPLE
ZONE ☐

2. NAME OF OPERATOR

Blackwood & Nichols Co., LTD

3. ADDRESS OF OPERATOR

P.O.Box 1237, Durango, Colorado, 81302-1237

4. LOCATION OF WELL (Report location clearly and in accordance with any State requirements.)*

At surface

1904' FNL - 790' FEL

At proposed prod. zone

Same

14. DISTANCE IN MILES AND DIRECTION FROM NEAREST TOWN OR POST OFFICE*

19 Miles NE of Blanco, New Mexico

15. DISTANCE FROM PROPOSED*

LOCATION TO NEAREST
PROPERTY OR LEASE LINE, FT.
(Also to nearest drlg. unit line, if any)

1850'

16. NO. OF ACRES IN LEASE

2396.77

17. NO. OF ACRES ASSIGNED
TO THIS WELL

320

18. DISTANCE FROM PROPOSED LOCATION*
TO NEAREST WELL, DRILLING, COMPLETED,
OR APPLIED FOR, ON THIS LEASE, FT.

300'

19. PROPOSED DEPTH

3273'

20. ROTARY OR CABLE TOOLS

Rotary

21. ELEVATIONS (Show whether DF, RT, GR, etc.)

6463' GL SURFACE OF LAND

22. APPROX. DATE WORK WILL START*

January 5, 1990

23.

PROPOSED CASING AND CEMENTING PROGRAM

SIZE OF HOLE	SIZE OF CASING	WEIGHT PER FOOT	SETTING DEPTH	
12 1/4"	9 5/8"	36#	300'	250 sks (295 cuft) circulate
8 3/4"	7"	23#	3009'	555 sks (940 cuft) circulate
6 1/4"	5 1/2"	17#	2909' - 3273'	30 sks (39 cuft) to circulate

Propose to spud in the San Jose formation. Drill a 12 1/4" hole to a TD of 300'. Run and cement surface casing, with cement returns to surface. WOC 12 hours. Pressure test casing and BOPE to 600 psi/30 mins. Drill an 8 3/4" hole to a TD of 3009' using fresh water mud. No abnormal pressures or poisonous gas is anticipated. Run and cement intermediate casing with cement returns to surface. WOC 12 hours. Pressure test casing and BOPE to 1500 psi/30 mins. Drill a 6 1/4" hole through the Fruitland coals, using air and water. Run a 5 1/2" production liner. The liner will not be cemented if a natural flow is encountered in the Fruitland coals.

RECEIVED

JAN 08 1990

OIL CON. DIV.

DIST 3

IN ABOVE SPACE DESCRIBE PROPOSED PROGRAM: If proposal is to deepen or plug back, give data on present production zone and proposed new productive zone. If proposal is to drill or deepen directionally, give pertinent data on subsurface locations and measured and true vertical depths. Give blowout preventer program, if any.

24.

SIGNED

TITLE

Operations Manager

DATE

18 Dec '89

(This space for Federal or State office use)

PERMIT NO.

APPROVAL DATE

APPROVED BY

CONDITIONS OF APPROVAL, IF ANY:

TITLE

APPROVED
AS AMENDED

JAN 08 1990

AREA MANAGER

*See Instructions On Reverse Side
NMAOCD

NEW MEXICO OIL CONSERVATION COMMISSION
WELL LOCATION AND ACREAGE DEDICATION PLAT

Form C-102
Supersedes C-128
Effective 1-1-65

All distances must be from the outer boundaries of the Section.

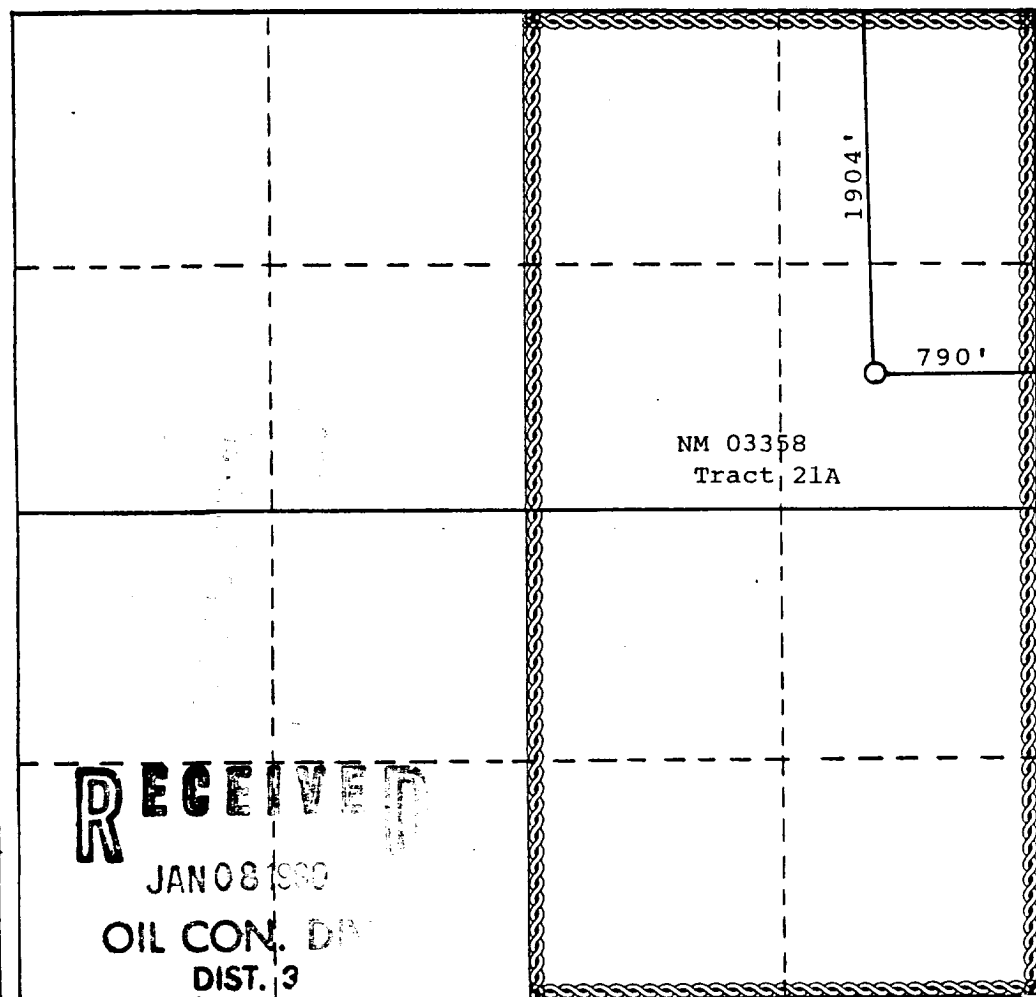
Operator BLACKWOOD & NICHOLS CO., LTD.			Lease NORTHEAST BLANCO UNIT		Well No. 490
Unit Letter H	Section 14	Township 31 North	Range 7 West	County San Juan County	
Actual Footage Location of Well: 1904 feet from the north line and 790 feet from the east line					
Ground Level Elev: 6463 (U.G.)	Producing Formation Fruitland Coal	Pool Basin Fruitland Coal	Dedicated Acreage: 320 Acres		

1. Outline the acreage dedicated to the subject well by colored pencil or hachure marks on the plat below.
2. If more than one lease is dedicated to the well, outline each and identify the ownership thereof (both as to working interest and royalty).
3. If more than one lease of different ownership is dedicated to the well, have the interests of all owners been consolidated by communitization, unitization, force-pooling, etc?

☒ Yes ☐ No If answer is "yes," type of consolidation Unitization

If answer is "no," list the owners and tract descriptions which have actually been consolidated. (Use reverse side of this form if necessary.) _____

No allowable will be assigned to the well until all interests have been consolidated (by communitization, unitization, forced-pooling, or otherwise) or until a non-standard unit, eliminating such interests, has been approved by the Commission.



CERTIFICATION

I hereby certify that the information contained herein is true and complete to the best of my knowledge and belief.

William F. Clark

Name
William F. Clark

Position
Operations Manager

Company
Blackwood & Nichols Co.

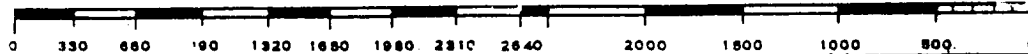
Date
December 7, 1989

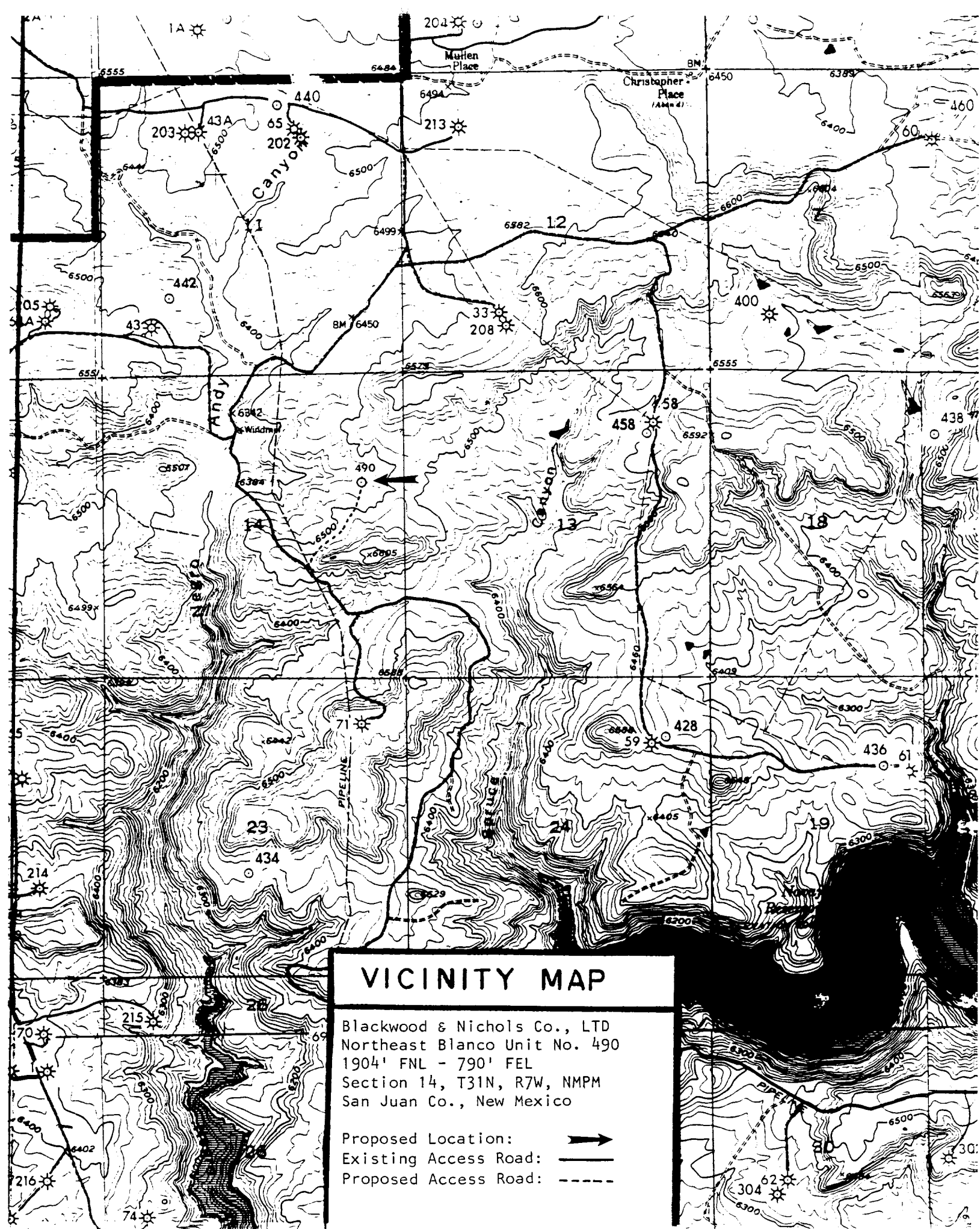
I hereby certify that the well location shown on this plat was plotted from field notes of actual surveys made by me or under my supervision, and that the same is true and correct to the best of my knowledge and belief.

Date Surveyed
November 13, 1989

Registered Professional Engineer and/or Land Surveyor
Allison L. Kroeger
Allison L. Kroeger, PLS



Certificate No.
7922





VICINITY MAP

Blackwood & Nichols Co., LTD
Northeast Blanco Unit No. 490
1904' FNL - 790' FEL
Section 14, T31N, R7W, NMPM
San Juan Co., New Mexico

Proposed Location: 
Existing Access Road: 
Proposed Access Road: 