

UNITED STATES
DEPARTMENT OF THE INTERIOR
GEOLOGICAL SURVEY

APPLICATION FOR PERMIT TO DRILL, DEEPEN, OR PLUG BACK

1. TYPE OF WORK

DRILL ☒

DEEPEN ☐

PLUG BACK ☐

2. TYPE OF WELL

OIL WELL ☐

GAS WELL ☒

OTHER

SINGLE ZONE ☒

MULTIPLE ZONE ☐

3. NAME OF OPERATOR

Blackwood & Nichols Co., LTD.

4. ADDRESS OF OPERATOR

P.O.Box 1237, Durango, Colorado, 81302-1237

5. LOCATION OF WELL (Report location clearly and in accordance with any State requirements.)*

At surface

1200' FSL - 840' FWL

At proposed prod. zone

Same

6. DISTANCE IN MILES AND DIRECTION FROM NEAREST TOWN OR POST OFFICE*

18 miles Northeast of Blanco, New Mexico

7. DISTANCE FROM PROPOSED*

LOCATION TO NEAREST
PROPERTY OR LEASE LINE, FT.
(Also to nearest drlg. unit line, if any)

840'

8. NO. OF ACRES IN LEASE

2560.00

9. NO. OF ACRES ASSIGNED

TO THIS WELL 320

10. DISTANCE FROM PROPOSED LOCATION*
TO NEAREST WELL, DRILLING, COMPLETED,
OR APPLIED FOR, ON THIS LEASE, FT.

1100'

11. PROPOSED DEPTH

3370'

12. ROTARY OR CABLE TOOLS

Rotary

13. ELEVATIONS (Show whether DF, RT, GR, etc.)

6450' GL

14. APPROX. DATE WORK WILL START*

January 5, 1990

15.

PROPOSED CASING AND CEMENTING PROGRAM

SIZE OF HOLE	SIZE OF CASING	WEIGHT PER FOOT	SETTING DEPTH	
12 1/4"	9 5/8"	36#	300'	250 sxs. (295 cuft)
8 3/4"	7"	23#	3043'	555 sxs. (940 cuft)
6 1/4"	5 1/2"	17#	2943'-3370'	30 sxs. (39 cuft)

Propose to spud in the San Jose formation. Drill a 12 1/4" hole to a TD of 300'. Run and cement surface casing, with cement returns to surface. WOC 12 hours. Pressure test casing and BOPE to 600 psi/30mins. Drill an 8 3/4" hole to a TD of 3043' using fresh water mud. No abnormal pressures or poisonous gas is anticipated. Run and cement intermediate casing with cement returns to surface. WOC 12 hours. Pressure test casing and BOPE to 1500 psi/30 mins. Drill a 6 1/4" hole through the Fruitland coals, using air and water. Run a 5 1/2" production liner. The liner will not be cemented if a natural flow is encountered in the Fruitland coals.

Surface is BLM

RECEIVED
JAN 08 1990

IN ABOVE SPACE DESCRIBE PROPOSED PROGRAM: If proposal is to deepen or plug back, give data on present production zone and proposed new productive zone. If proposal is to drill or deepen directionally, give pertinent data on subsurface locations and measured and true vertical depths. Give blowout preventer program, if any.

16.

SIGNED

William F. Hall

TITLE

Operations Manager

DATE

14 Dec '89

(This space for Federal or State office use)

PERMIT NO.

APPROVAL DATE

APPROVED

AS AMENDED

APPROVED BY

TITLE

CONDITIONS OF APPROVAL, IF ANY:

ef

*See Instructions On Reverse Side

NMOCD

JAN 08 1990
AREA MANAGER

NEW MEXICO OIL CONSERVATION COMMISSION
WELL LOCATION AND ACREAGE DEDICATION PLAT

Form C-102
Supersedes C-128
Effective 1-1-65

All distances must be from the outer boundaries of the Section.

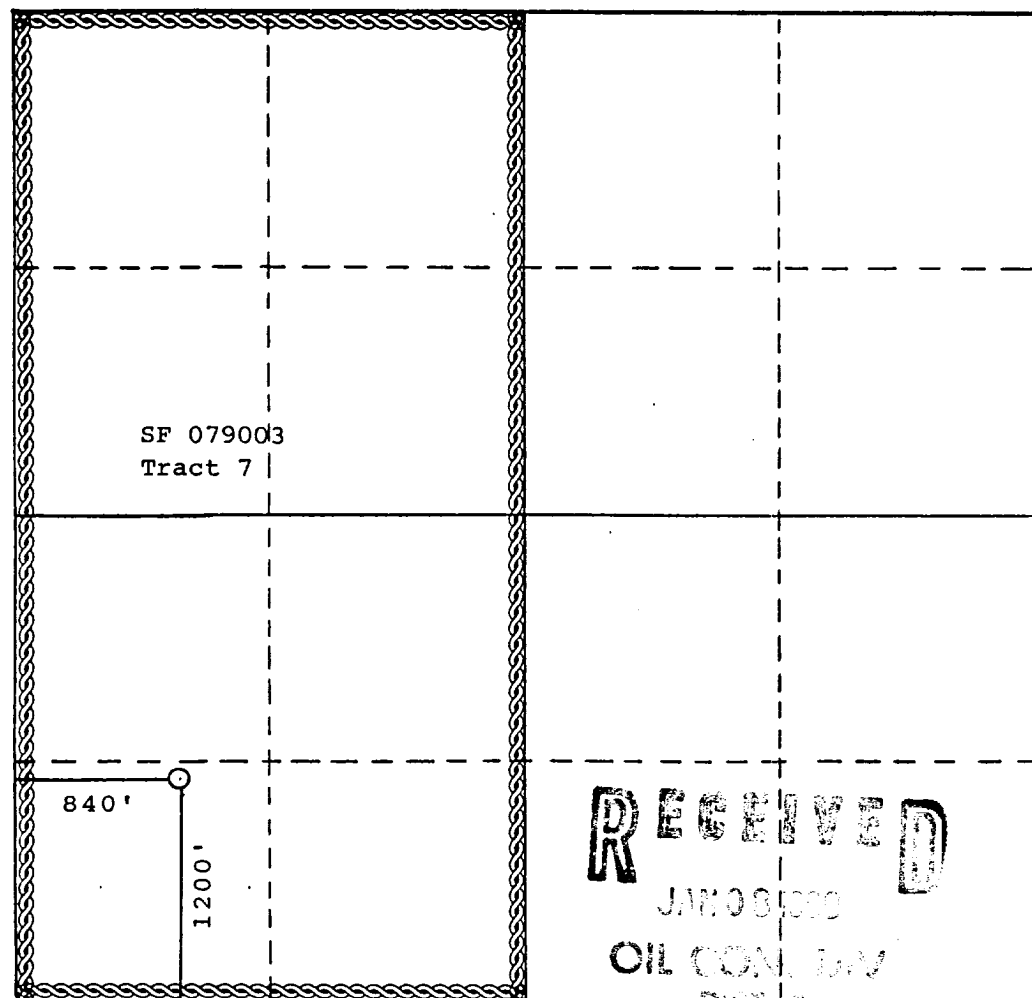
Operator BLACKWOOD & NICHOLS CO., LTD.			Lease NORTHEAST BLANCO UNIT		Well No. 476
Unit Letter M	Section 22	Township 31 North	Range 7 West	County San Juan County	
Actual Footage Location of Well: 1200 feet from the south line and 840 feet from the west line					
Ground Level Elev: 6450 (U.G.)	Producing Formation Fruitland Coal		Pool Basin Fruitland Coal	Dedicated Acreage: 320 Acres	

1. Outline the acreage dedicated to the subject well by colored pencil or hachure marks on the plat below.
2. If more than one lease is dedicated to the well, outline each and identify the ownership thereof (both as to working interest and royalty).
3. If more than one lease of different ownership is dedicated to the well, have the interests of all owners been consolidated by communitization, unitization, force-pooling, etc?

☒ Yes ☐ No If answer is "yes," type of consolidation Unitization

If answer is "no," list the owners and tract descriptions which have actually been consolidated. (Use reverse side of this form if necessary.)

No allowable will be assigned to the well until all interests have been consolidated (by communitization, unitization, forced-pooling, or otherwise) or until a non-standard unit, eliminating such interests, has been approved by the Commission.



CERTIFICATION

I hereby certify that the information contained herein is true and complete to the best of my knowledge and belief.

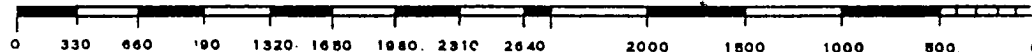
William F. Clark

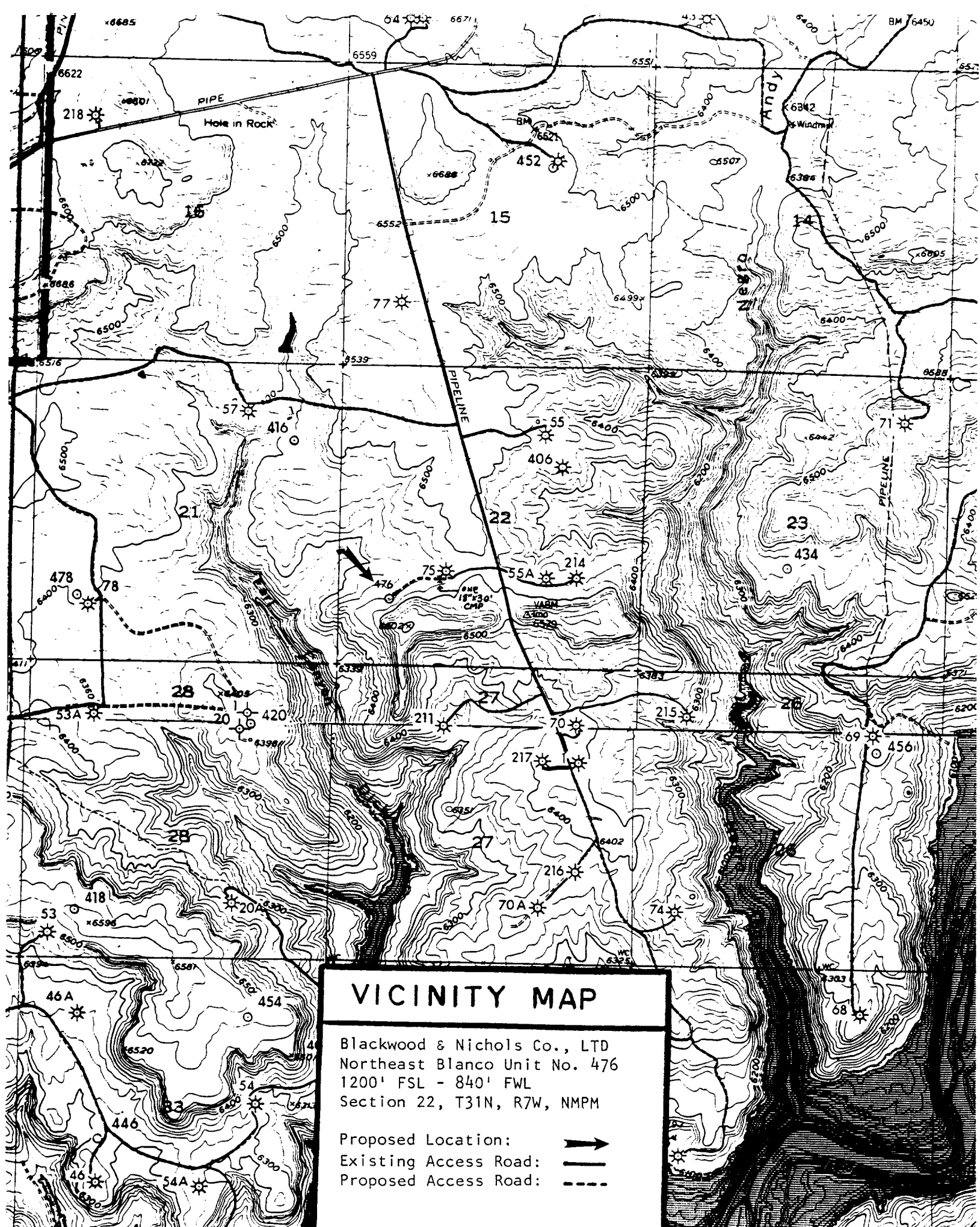
Name
William F. Clark
Position
Operations Manager
Company
Blackwood & Nichols Co.
Date
December 7, 1989

I hereby certify that the well location shown on this plat was plotted from field notes of actual surveys made by me or under my supervision, and that the same is true and correct to the best of my knowledge and belief.

Date Surveyed
November 9, 1989
Registered Professional Engineer and/or Land Surveyor
Allison L. Kroeger
Allison L. Kroeger, PLS
Certificate No.

7922





BUREAU OF LAND MANAGEMENT

SUNDRY NOTICES AND REPORTS ON WELLS

(Do not use this form for proposals to drill or to deepen or plug back to a different reservoir. Use "APPLICATION FOR PERMIT—" for such proposals.)

1. <input type="checkbox"/> OIL WELL <input type="checkbox"/> GAS WELL <input checked="" type="checkbox"/> OTHER		3. LEASE DESIGNATION AND SERIAL NO. SF079003	
2. NAME OF OPERATOR Blackwood & Nichols Co., Ltd.		6. IF INDIAN, ALLOTTEE OR TRIBE NAME	
3. ADDRESS OF OPERATOR P. O. Box 1237, Durango, Colorado 81302		7. UNIT AGREEMENT NAME Northeast Blanco Unit	
4. LOCATION OF WELL (Report location clearly and in accordance with any State requirements.* See also space 17 below.) At surface 1200' FSL, 840' FWL		8. FARM OR LEASE NAME Northeast Blanco Unit	
14. PERMIT NO. 30-045-27568		9. WELL NO. 476	
15. ELEVATIONS (Show whether DF, RT, GR, etc.) 6450' GL		10. FIELD AND POOL, OR WILDCAT Basin Fruitland Coal	
		11. SEC., T., R., M., OR BLK. AND SURVEY OR AREA Sec. 22, T31N, R7W	
		12. COUNTY OR PARISH San Juan	
		13. STATE New Mexico	

16. Check Appropriate Box To Indicate Nature of Notice, Report, or Other Data

NOTICE OF INTENTION TO:

TEST WATER SHUT-OFF ☐FRACTURE TREAT ☐SHOOT OR ACIDIZE ☐REPAIR WELL ☐(Other) ☐PULL OR ALTER CASING ☐MULTIPLE COMPLETE ☐ABANDON* ☐CHANGE PLANS ☐

SUBSEQUENT REPORT OF:

WATER SHUT-OFF ☐FRACTURE TREATMENT ☐SHOOTING OR ACIDIZING ☐(Other) ☐REPAIRING WELL ☐ALTERING CASING ☐ABANDONMENT* ☐Cement ☒

(NOTE: Report results of multiple completion on Well Completion or Recompletion Report and Log form.)

17. DESCRIBE PROPOSED OR COMPLETED OPERATIONS (Clearly state all pertinent details, and give pertinent dates, including estimated date of starting any proposed work. If well is directionally drilled, give subsurface locations and measured and true vertical depths for all markers and zones pertinent to this work.)*

2-04-90 Spud 12-1/4" surface hole at 1:30 p.m., 2-03-90. Drill to 303'. Run 7 jts (286.77') 9-5/8" 36# J-55 casing, set at 299'. Cement with 250 sx (295 cf) Class B with 2% CaCl₂ and 1/4 #/sk cellophane flake. Good circulation. Displace with 20.5 Bbls water. Circulate 20 Bbls cement to surface. Plug down at 7:45 p.m., 2-03-90.

2-05-90 Pressure test casing and BOP to 600 psi - held OK.

2-06-90 Drill to TD of 3041'.

2-07-90 Run 58 jts 7" 23# L-80 and 16 jts 7" 23# N-80 (3022.71' total) and set at 3035'; insert float at 2991'. Cement with 430 sx (748 cf) 65/35 Poz Class B with 6% gel, .6% FL-19, and 1/4 #/sk celloflake. Tail with 125 sx (147.5 cf) Class B neat with 1/4 #/sk celloflake. Good circulation throughout. Displace with 116.5 Bbls water, circulate 19 Bbls cement to surface. Plug down at 2:15 p.m., 2-06-90.

RECEIVED

FEB 26 1990

OIL CON. DIV.
DIST. 3

18. I hereby certify that the foregoing is true and correct

SIGNED William F. Clark

TITLE Operations Manager

DATE 9 Feb '90

(This space for Federal or State office use)

APPROVED BY
CONDITIONS OF APPROVAL, IF ANY:

TITLE

Accepted For File

DATE

2-20-90

*See Instructions on Reverse Side