

UNITED STATES  
DEPARTMENT OF THE INTERIOR  
BUREAU OF LAND MANAGEMENT

APPLICATION FOR PERMIT TO DRILL, DEEPEN, OR PLUG BACK

1a. TYPE OF WORK

DRILL ☒

DEEPEN ☐

PLUG BACK ☐

b. TYPE OF WELL

OIL  
WELL ☐

GAS  
WELL ☒

OTHER

SINGLE  
ZONE ☒

MULTIPLE  
ZONE ☐

2. NAME OF OPERATOR

Blackwood & Nichols Co., Ltd.

3. ADDRESS OF OPERATOR

P. O. Box 1237, Durango, CO 81302

4. LOCATION OF WELL (Report location clearly and in accordance with any State requirements.)

At surface

1730' FSL, 740' FWL

At proposed prod. zone

14. DISTANCE IN MILES AND DIRECTION FROM NEAREST TOWN OR POST OFFICE\*

18 miles SE of Ignacio, Colorado

10. DISTANCE FROM PROPOSED\*

LOCATION TO NEAREST

PROPERTY OR LEASE LINE, FT.

(Also to nearest drlg. unit line, if any)

910'

16. NO. OF ACRES IN LEASE

2591.89

2560

17. NO. OF ACRES ASSIGNED

TO THIS WELL

5/351.89

18. DISTANCE FROM PROPOSED LOCATION\*

TO NEAREST WELL, DRILLING, COMPLETED,  
OR APPLIED FOR, ON THIS LEASE, FT.

N/A

19. PROPOSED DEPTH

3300

20. ROTARY OR CABLE TOOLS

Rotary

21. ELEVATIONS (Show whether DF, RT, GR, etc.)

6419' GL

22. APPROX. DATE WORK WILL START\*

November 30, 1989

23. PROPOSED CASING AND CEMENTING PROGRAM

SIZE OF HOLE	SIZE OF CASING	WEIGHT PER FOOT	SETTING DEPTH	QUANTITY OF CEMENT
12-1/4"	9-5/8"	36#	300'	207 cf/circulate to surface
8-3/4"	7"	23#	3160'	744 cf/circulate to surface
6-1/4"	5-1/2" or 4-1/2"	17# or 11.6#	3060' - 3300'	30 cf/circulate to liner top

Formerly the NEBU #209 location and access road were cleared in August, 1987.

Propose to spud in the San Jose formation. Will drill a 12-1/4" surface hole to a TD of 300'. Surface casing will be run and cemented with cement returns to surface. WOC 12 hours. Test to 600 psi/30 minutes. Drill an 8-3/4" hole to a TD of 3160' using fresh water mud. No poisonous gasses or abnormal pressures are anticipated. Run intermediate casing and cement with cement returns to surface. WOC 12 hours. Test to 1500 psi/30 minutes. Drill a 6-1/4" hole to a TD of 3300', using water and air. Run a mudlogging unit while drilling this interval. Run the production liner. A 4-1/2" liner will be cemented if the well's natural flow capacity indicates the need for fracture stimulation.

Surface ownership is Bureau of Land Management.

IN ABOVE SPACE DESCRIBE PROPOSED PROGRAM: If proposal is to deepen or plug back, give data on present productive zone and proposed new productive zone. If proposal is to drill or deepen directionally, give pertinent data on subsurface locations and measured and true vertical depths. Give blowout preventer program, if any.

24.

SIGNED

William F. Clark

TITLE Operations Manager

DATE September 26, 1989

(This space for Federal or State office use)

PERMIT NO.

APPROVAL DATE

APPROVED BY

CONDITIONS OF APPROVAL, IF ANY

TITLE

DATE

AREA MANAGER

NSP/1590-L OIL CON. DIV

NMOCD

DIST. 3

\*See Instructions On Reverse Side

Title 18 U.S.C. Section 1001 makes it a crime for any person knowingly and willfully to make to any department or agency of the

Submit to Appropriate  
District Office  
State Lease - 4 copies  
Fee Lease - 3 copies

State of New Mexico  
Energy, Minerals and Natural Resources Department

Form C-102  
Revised 1-1-89

OIL CONSERVATION DIVISION

P.O. Box 2088  
Santa Fe, New Mexico 87504-2088

RECEIVED

JAN 30 1990

OIL CON. DIV.  
DIST. 3

DISTRICT I  
P.O. Box 1980, Hobbs, NM 88240

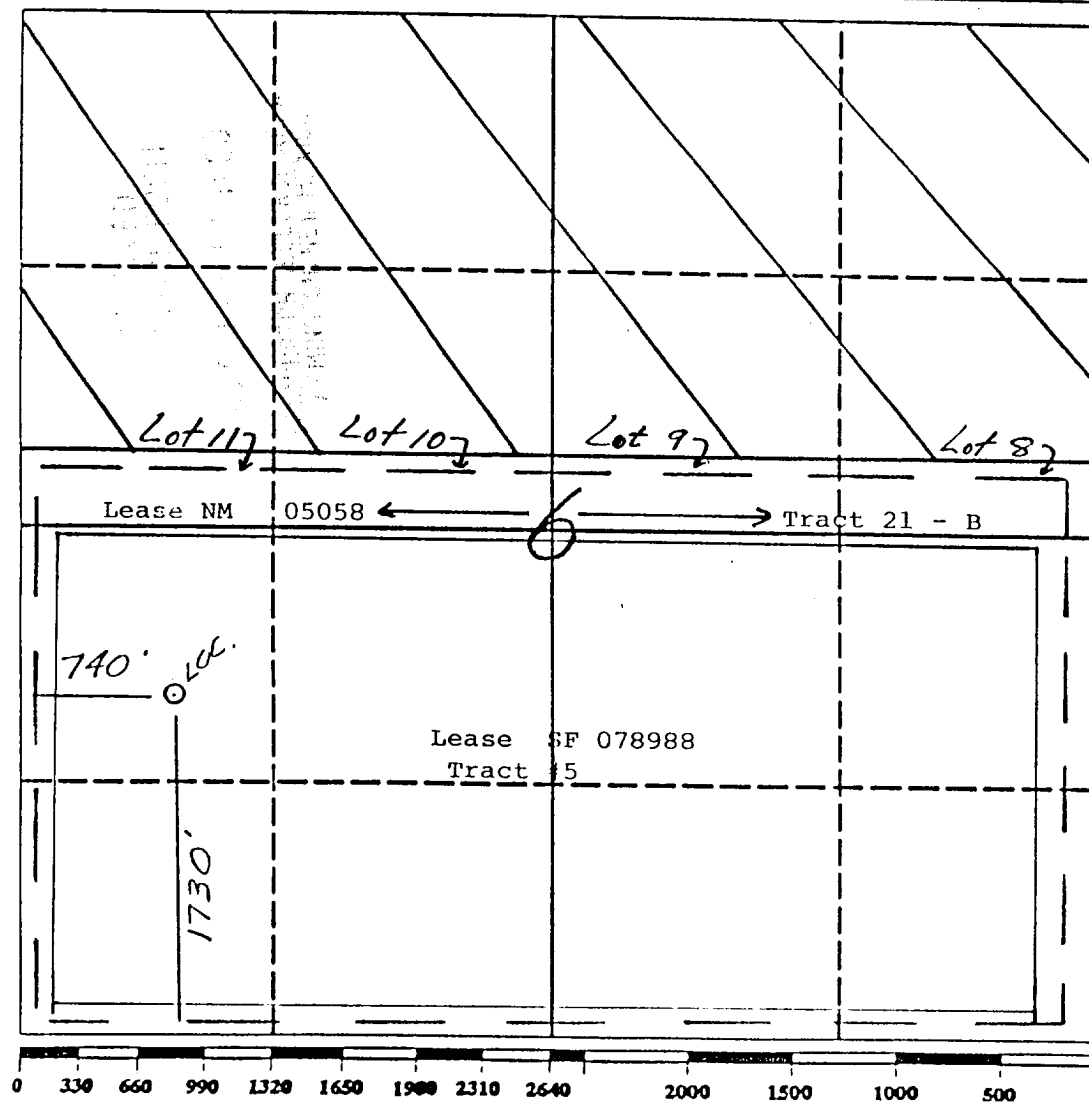
DISTRICT II  
P.O. Drawer DD, Artesia, NM 88210

DISTRICT III  
1000 Rio Brazos Rd., Aztec, NM 87410

WELL LOCATION AND ACREAGE DEDICATION PLAT  
All Distances must be from the outer boundaries of the section

Operator Blackwood & Nichols Co., LTD.			Lease Northeast Blanco Unit		Well No. 426
Unit Letter L	Section 6	Township 31 North	Range 6 West	County San Juan	
Actual Footage Location of Well: 1730 feet from the South line and 740 feet from the West line					
Ground level Elev. 6419'	Producing Formation Fruitland Coal		Pool Basin Fruitland Coal	Dedicated Acreage: 351.89 Acres	

- Outline the acreage dedicated to the subject well by colored pencil or hatchure marks on the plat below.
- If more than one lease is dedicated to the well, outline each and identify the ownership thereof (both as to working interest and royalty).
- If more than one lease of different ownership is dedicated to the well, have the interest of all owners been consolidated by communitization, unitization, force-pooling, etc.?  
☒ Yes ☐ No If answer is "yes" type of consolidation Unitization  
If answer is "no" list the owners and tract descriptions which have actually been consolidated. (Use reverse side of this form if necessary.)  
No allowable will be assigned to the well until all interests have been consolidated (by communitization, unitization, forced-pooling, or otherwise) or until a non-standard unit, eliminating such interest, has been approved by the Division.



OPERATOR CERTIFICATION

I hereby certify that the information contained herein is true and complete to the best of my knowledge and belief.

*William F. Clark*  
Signature

William F. Clark  
Printed Name

Operations Manager  
Position

Blackwood & Nichols  
Company

August 9, 1989  
Date

SURVEYOR CERTIFICATION

I hereby certify that the well location shown on this plat was plotted from field notes, actual surveys made by me or under my supervision, and that the same is true and correct to the best of my knowledge and belief.

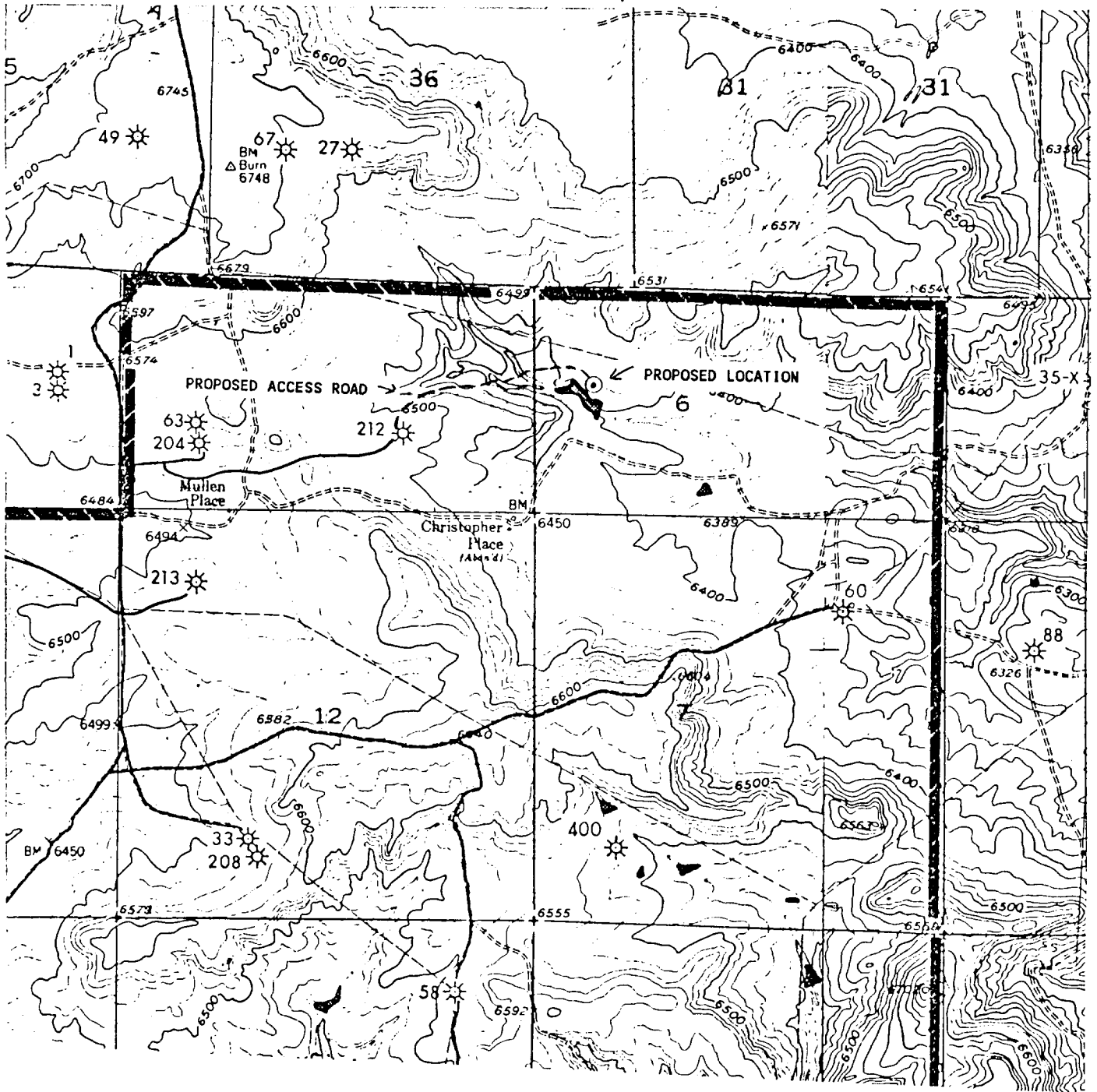
8-7-89  
Date Surveyed

Neale C. Edwards  
Signature

Professional Surveyor

6857  
Certificate No.

R6W



T  
31  
N

VICINITY MAP

Blackwood & Nichols Co., Ltd.  
Northeast Blanco Unit No. 426  
1730' FSL, 740' FWL  
Section 6, T31N, R6W  
San Juan County, New Mexico