

UNITED STATES
DEPARTMENT OF THE INTERIOR
BUREAU OF LAND MANAGEMENT

APPLICATION FOR PERMIT TO DRILL, DEEPEN, OR PLUG BACK

1a. TYPE OF WORK
DRILL ☒ DEEPEN ☐ PLUG BACK ☐

b. TYPE OF WELL
OIL WELL ☐ GAS WELL ☒ OTHER ☐
SINGLE ZONE ☒ MULTIPLE ZONE ☐

2. NAME OF OPERATOR
Union Texas Petroleum Corp. Attn: Ken E. White

3. ADDRESS OF OPERATOR
P.O. Box 2120 Houston, TX 77252-2120

4. LOCATION OF WELL (Report location clearly and in accordance with any State requirements.)
At surface
790 FNL & 860 FEL
At proposed prod. zone

14. DISTANCE IN MILES AND DIRECTION FROM NEAREST TOWN OR POST OFFICE*
15 miles east Aztec, NM

15. DISTANCE FROM PROPOSED*
LOCATION TO NEAREST
PROPERTY OR LEASE LINE, FT.
(Also to nearest drilg. unit line, if any) 790

16. NO. OF ACRES IN LEASE
2365.58

17. NO. OF ACRES ASSIGNED
TO THIS WELL
E/ 315.88

18. DISTANCE FROM PROPOSED LOCATION*
TO NEAREST WELL, DRILLING, COMPLETED,
OR APPLIED FOR, ON THIS LEASE, FT. 4350'

19. PROPOSED DEPTH
3225

20. ROTARY OR CABLE TOOLS
Rotary

21. ELEVATIONS (Show whether DF, RT, GR, etc.)
6156 6165 GR

22. APPROX. DATE WORK WILL START*
5-1-90

PROPOSED CASING AND CEMENTING PROGRAM				DRILLING OPERATIONS AUTHORIZED ARE SUBJECT TO COMPLIANCE WITH ATTACHED GENERAL REQUIREMENTS	
SIZE OF HOLE	SIZE OF CASING	WEIGHT PER FOOT	SETTING DEPTH	QUANTITY OF CEMENT	
8 1/2	9 5/8	36#	350	210 sx	
8 3/4	7	23#	3225	254 sx	+100

We propose to drill 3225' in the Fruitland Coal formation according to the 8 pt drilling plan.

RECEIVED

MAR 01 1990

OIL CON. DIV.)
DIST. 3

"After review of this application does
not warrant that the applicant
holds legal or equitable rights
or title to this lease."

IN ABOVE SPACE DESCRIBE PROPOSED PROGRAM: If proposal is to deepen or plug back, give data on present productive zone and proposed new productive zone. If proposal is to drill or deepen directionally, give pertinent data on subsurface locations and measured and true vertical depths. Give blowout preventer program, if any.

24. SIGNED Ken White TITLE Regulatory Permit Coord DATE 1-31-90

(This space for Federal or State office use)

PERMIT NO. _____ APPROVAL DATE _____

APPROVED BY _____ TITLE _____
CONDITIONS OF APPROVAL, IF ANY:

APPROVED
AS AMENDED

FEB 27 1990

AREA MANAGER

*See Instructions On Reverse Side

State of New Mexico
Energy, Minerals and Natural Resources Department

OIL CONSERVATION DIVISION

P.O. Box 2088
Santa Fe, New Mexico 87504-2088

Form C-102
Revised 1-1-89

50 FEB - 5 AM 11:31

to Appropriate
Office
Lease - 4 copies
Per Lease - 3 copies

DISTRICT I
P.O. Box 1980, Hobbs, NM 88240

DISTRICT II
P.O. Drawer DD, Artesia, NM 88210

DISTRICT III
1000 Rio Brazos Rd., Aztec, NM 87410

WELL LOCATION AND ACREAGE DEDICATION PLAT

All Distances must be from the outer boundaries of the section

Operator UNION TEXAS PETROLEUM			Lease NORDHAUS 11		Well No. 1
Unit Letter A	Section 11	Township T31N	Range 9W	County NMPM	SAN JUAN
Actual Footage Location of Well: 790 feet from the NORTH line and 860 feet from the EAST line					
Ground level Elev. 6156.	Producing Formation Fruitland Coal		Pool Basin	Dedicated Acreage: 315.88 Acres	

1. Outline the acreage dedicated to the subject well by colored pencil or hatchure marks on the plat below.

2. If more than one lease is dedicated to the well, outline each and identify the ownership thereof (both as to working interest and royalty).

3. If more than one lease of different ownership is dedicated to the well, have the interest of all owners been consolidated by communization, unitization, force-pooling, etc.?

☐ Yes ☐ No If answer is "yes" type of consolidation

If answer is "no" list the owners and tract descriptions which have actually been consolidated. (Use reverse side of this form if necessary.)

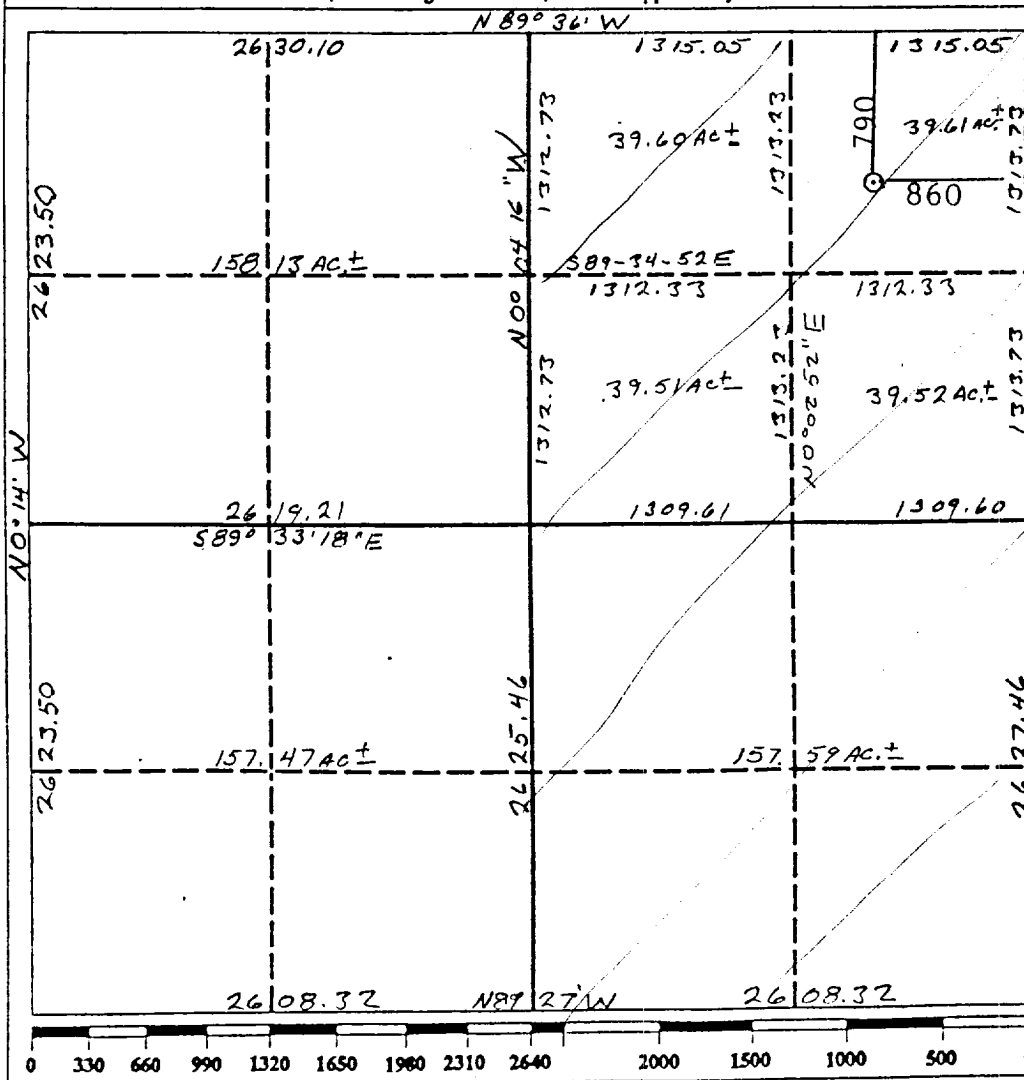
No allowable will be assigned to the well until all interests have been consolidated (by communization, unitization, forced-pooling, etc.) or until a non-standard unit, eliminating such interest, has been approved by the Division.

RECEIVED

MAR 01 1990

OIL CON. DIV.

DIST. 3



OPERATOR CERTIFICATION

I hereby certify that the information contained herein is true and complete to the best of my knowledge and belief.

Signature

Ken E. White

Printed Name

Regulatory Permit Coord.

Position

Union Texas Petroleum Corp.

Company

1-31-90

Date

Ken White

SURVEYOR CERTIFICATION

I hereby certify that the well location shown on this plat was plotted from field notes of actual surveys made by me or under my supervision, and that the same is true and correct to the best of my knowledge and belief.

October 2, 1989

Date Surveyed

Cecil B. Tullis

Signature & Seal of Professional Surveyor

9672

Cecil B. Tullis
Certificate No.

9672