

UNITED STATES
DEPARTMENT OF THE INTERIOR
BUREAU OF LAND MANAGEMENT

SUNDRY NOTICES AND REPORTS ON WELLS

1. TYPE OF WELL GAS		5. LEASE NUMBER SF-078508	
2. OPERATOR MERIDIAN OIL INC.		6. IF INDIAN, ALL. OR TRIBE NAME	
3. ADDRESS & PHONE NO. OF OPERATOR P O BOX 4289 FARMINGTON, NM 87499		7. UNIT AGREEMENT NAME NORDHAUS	
4. LOCATION OF WELL 790'FNL 860'FEL		8. FARM OR LEASE NAME NORDHAUS	
		9. WELL NO. 712	
		10. FIELD, POOL, OR WILDCAT BASIN FRUITLAND COAL	
		11. SEC. T. R. M OR BLK. SEC. 11 T31N R09W NMPM	
14. PERMIT NO.	15. ELEVATIONS 6165'GL	12. COUNTY SAN JUAN	13. STATE NM

16. SUBSEQUENT REPORT OF: Amended Application for Permit to Drill

17. Describe proposed or completed operations

Operator & Name Change

from
Reference is made to Union Texas Petroleum's Application for Permit to Drill the Nordhaus 11 #1 approved 02-27-90.

Meridian Oil Inc. will operate and drill this well as the Nordhaus #712 at 790'FNL and 860'FEL of Section 11 of Township T31N and Range R09W.

Submitted for review:

- C102
- Operations Plan
- BOP Diagrams
- Location Laydown
- Cut and Fill Diagram
- Facilities Diagram

RECEIVED

AUG 06 1990

18. AUTHORIZED BY: *Deane M. [Signature]*
REGULATORY AFFAIRS

OIL CON. DIV
DIST. ?

DATE

NOTE: THIS FORMAT IS ISSUED IN LIEU OF US BLM FORM 3160-5.

(This space for Federal or State office use)

APPROVED BY
CONDITION OF APPROVAL, IF ANY:

TITLE

DATE

JUL 25 1990

W. J. [Signature]

OIL CONSERVATION DIVISION

DISTRICT I
P.O. Box 1980, Hobbs, NM 88240

P.O. Box 2088

Santa Fe, New Mexico 87504-2088

DISTRICT II
P.O. Drawer DD, Artesia, NM 88210

DISTRICT II
1000 Rio Brazos Rd., Aztec, NM 87410

WELL LOCATION AND ACREAGE DEDICATION PLAT

All Distances must be from the outer boundaries of the section

Operator Meridian Oil Inc.		Lease Nordhaus (SF-078508)		Well No. 712
Unit Letter A	Section 11	Township 31 North	Range 9 West	County San Juan
Actual Footage Location of Well: 790 feet from the North line and 860 feet from the East line				
Ground level Elev. 6156'	Producing Formation Fruitland Coal	Pool Basin	Dedicated Acreage: 315.88 Acres	

1. Outline the acreage dedicated to the subject well by colored pencil or hatchure marks on the plat below.
2. If more than one lease is dedicated to the well, outline each and identify the ownership thereof (both as to working interest and royalty).
3. If more than one lease of different ownership is dedicated to the well, have the interest of all owners been consolidated by communitization, force-pooling, etc.?
- ☐ Yes ☐ No If answer is "yes" type of consolidation

If answer is "no" list the owners and tract descriptions which have actually been consolidated. (Use reverse side of this form if necessary).

No allowable will be assigned to the well until all interests have been consolidated (by communitization, unitization, forced-pooling, or otherwise) or until a non-standard unit, eliminating such interest, has been approved by the Division.

5260.20'

790'

860'

1

2

3

4

5

6

7

8

9

10

11

12

13

14

15

16

5247.0'

5216.64'

RECEIVED
AUG 06 1990
CON DIV

OPERATOR CERTIFICATION

I hereby certify that the information contained herein is true and complete to the best of my knowledge and belief.

~~SECRET~~

Peggy Bradford

Printed Name _____

Regulatory Affairs

Position

Meridian Oil Inc.

Содержание

Date _____

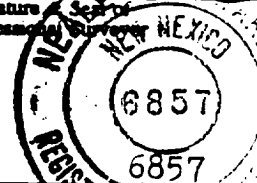
SURVEYOR CERTIFICATION

I hereby certify that the well location shown on this plat was plotted from field notes of actual surveys made by me or under my supervision, and that the same is true and correct to the best of my knowledge and belief.

7-2-90

Date Supervised

Signature _____
Professional Surveyor _____



Certificate No. **REGISTERED LAND**
Neale G. Edwards

RECEIVED

AUG 05 1990

OIL CON. DIV

Well Name: 712 NORDHAUS
 Sec. 11 T31N R09W
 BASIN FRUITLAND COAL

790'FNL 860'FEL
 SAN JUAN NEW MEXICO
 Elevation 6165'GL

Formation tops: Surface- SAN JOSE

Ojo Alamo- 1438

Kirtland- 1487

Fruitland- 2615

Fruitland Coal Top- 2825

Fruitland Coal Base- 3019

Pictured Cliffs- 3022

Intermediate TD- 2815

Total Depth- 3020

Logging Program: Mud logs from intermediate to total depth.

Mud Program:	Interval	Type	Weight	Visc.	Fl. Loss
	0 - 200	Spud	8.4 - 8.9	40-50	no control
	200 - 2815	Non-dispersed	8.4 - 9.1	30-60	no control
	2815 - 3020	Formation Water	8.4		no control

Casing Program:	Hole Size	Depth Interval	Csg. Size	Weight	Grade
	12 1/4"	0 - 200	9 5/8"	32.3#	H-40
	8 3/4"	0 - 2815	7"	20.0#	K-55
	6 1/4"	2765 - 3020	5 1/2"	15.5#	K-55
Tubing Program:		0 - 3020	2 7/8"	6.5#	J-55

Float Equipment: 9 5/8" surface casing - saw tooth guide shoe. Centralizers will be run in accordance with Onshore Order #2.

7" intermediate casing - guide shoe and self-fill insert float valve. Three centralizers run every other joint above shoe. Run insert float one joint above the guide shoe. Two turbolizing type centralizers - one below and one into the base of the Ojo Alamo @ 1487'. Standard centralizers thereafter every fourth joint up to the base of the surface pipe.

5 1/2" production casing - float shoe on bottom and a pre-drilled liner run to the 7" casing with a minimum 50' overlap. Liner hanger is a double slip grip type.

Wellhead Equipment: 9 5/8" x 7" x 2 7/8" x 11" 3000 psi xmas tree assembly.

Cementing:

9 5/8" surface casing - cement with 160 sacks of class "B" cement with 1/4# flocele/sack and 3% calcium chloride (189 cu ft. of slurry, 200% excess to circulate to surface). WOC 12 hours. Test casing to 600 psi for 30 minutes.

7" intermediate casing - lead with 404 sacks of 65/35 class "B" poz with 6% gel, 2% calcium chloride and 1/2 cu ft. Perlite/sack (10.3 gallons of water/sack) tail with 100 sacks of class "B" with 2% calcium chloride. 899 cu ft. of slurry, 110% excess to circulate to surface. If hole conditions permit, a 600 ft spacer will be run ahead of the cement slurry to avoid mud contamination of the cement. WOC 12 hours. If cement does not circulate to surface, a temperature log will be run after 8 hours to determine TOC.

5 1/2" liner - do not cement.

BOP and Tests:

Surface to intermediate TD - 11" 2000 psi(minimum) double gate BOP stack (Reference Figure #1). Prior to drilling out surface casing, test rams to 600 psi for 30 minutes.

Intermediate TD to TD - 7 1/16" 2000 psi(minimum) double gate BOP stack (Reference Figure #2). Prior to drilling out intermediate casing, test blind rams and casing to 2500 psi for 30 minutes; all pipe rams and casing to 2500 psi for 30 minutes each.

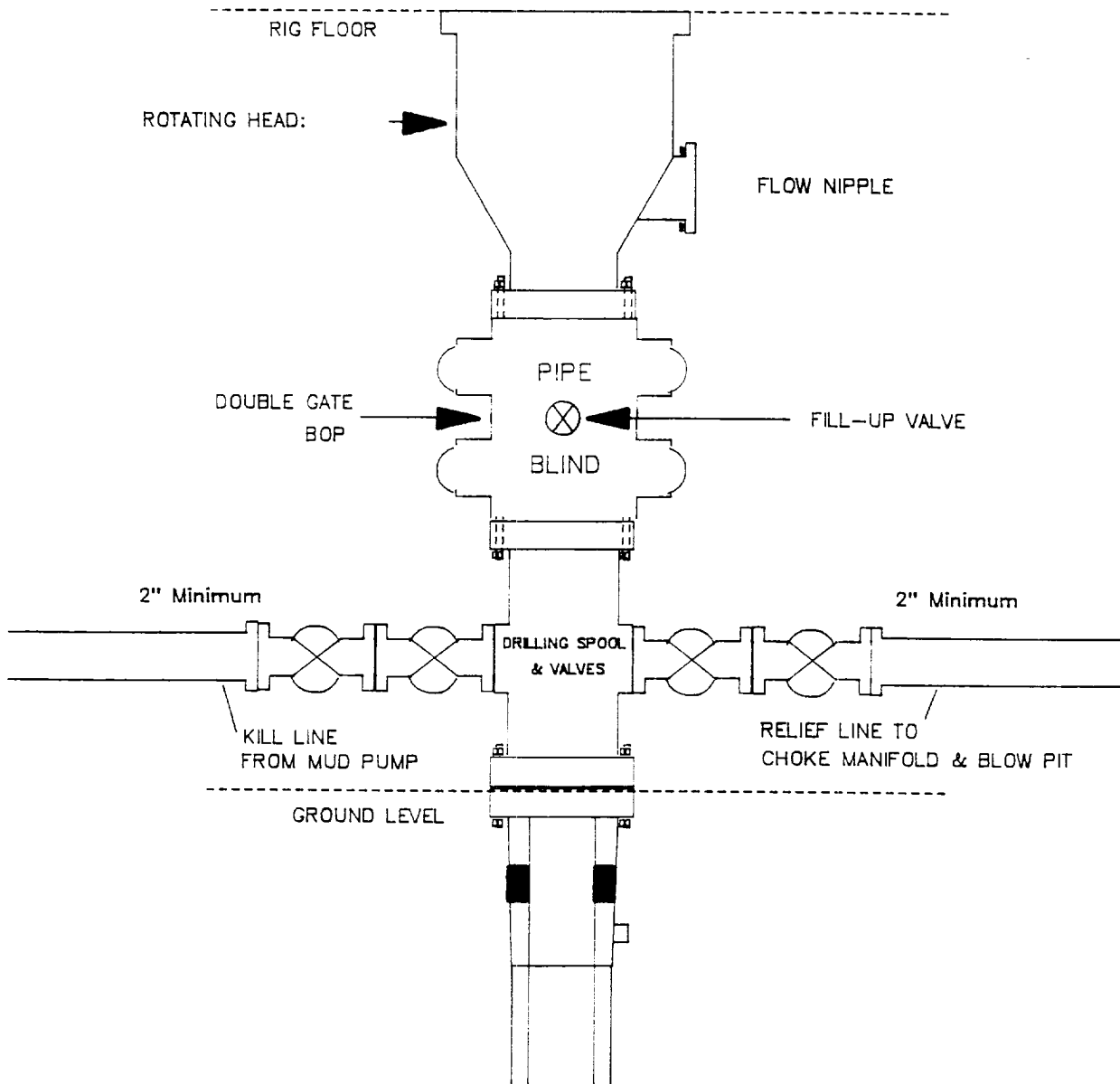
From surface to TD - choke manifold (Reference Figure #3).

Pipe rams will be actuated at least once each day and blind rams actuated once each trip to test proper functioning. An upper kelly cock valve with handle and drill string safety valves to fit each drill string will be maintained and available on the rig floor.

Additional Information:

- * The Fruitland coal formation will be completed.
- * Anticipated Fruitland pore pressure is 1586 psi.
- * This gas is dedicated.
- * The E/2 of Section 11 is dedicated to this well.
- * New casing will be utilized.
- * Cementing Contractor will provide the BLM with a chronological log including the pump rate and pressure, and the slurry density and volume for all cement jobs.
- * Pipe movement (either rotation or reciprocation) will be done if hole conditions permit.

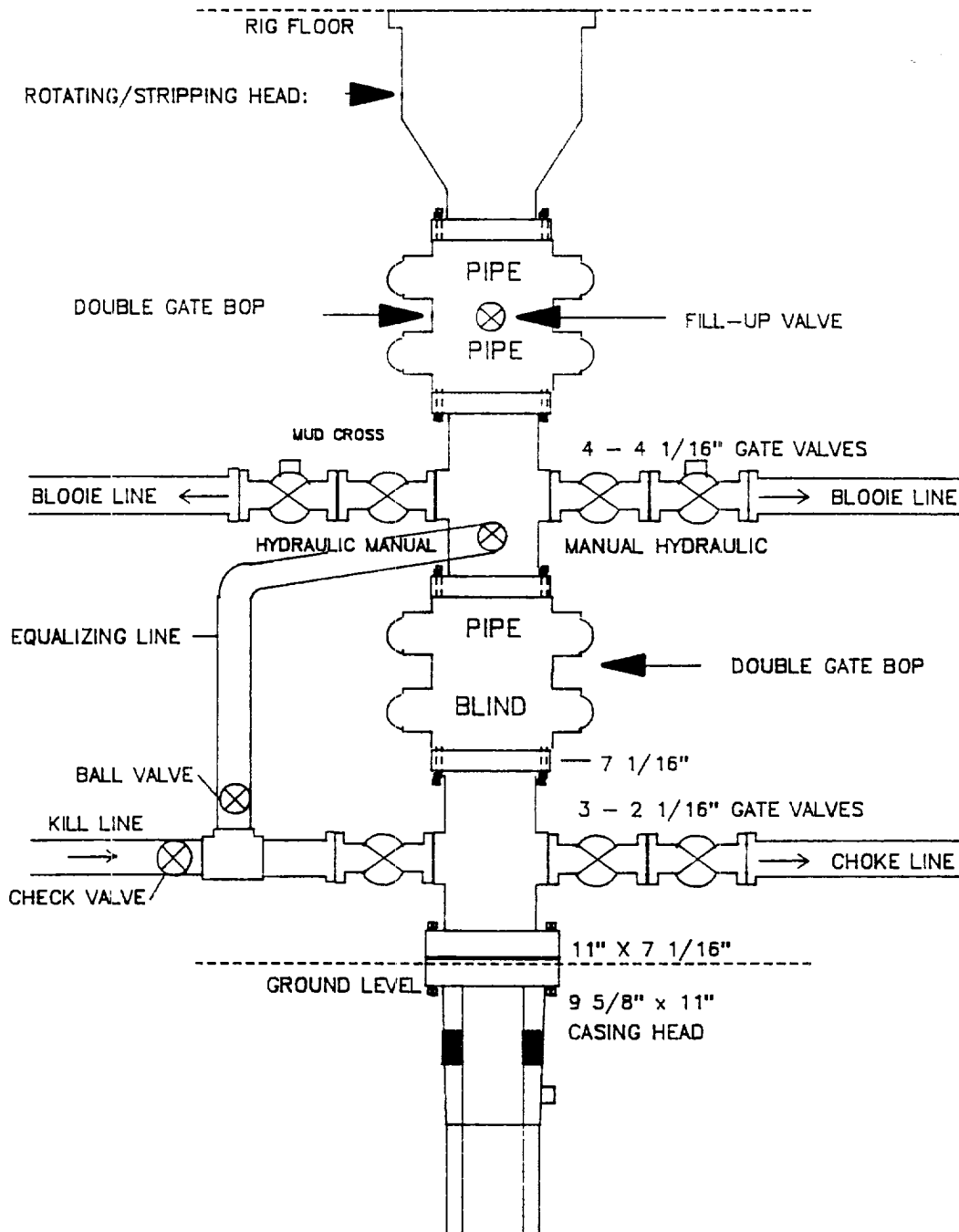
MERIDIAN OIL INC.
Drilling Rig
BOP Configuration



Minimum BOP installation for a typical Fruitland Coal well from surface to Intermediate casing point. 11" Bore (10" Nominal), 2000psi minimum working pressure double gate BOP to be equipped with blind and pipe rams. A Schaffer Type 50 equivalent rotating head to be installed on the top of BOP. All equipment is 2000psi working pressure/or greater.

Figure #1

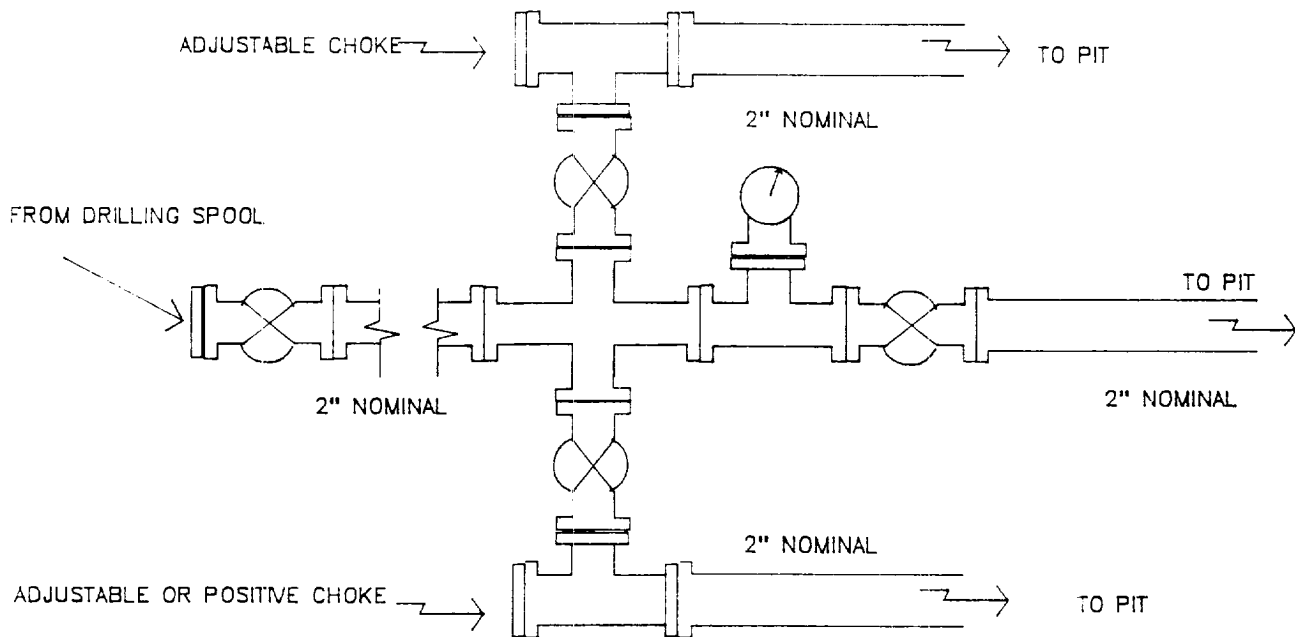
MERIDIAN OIL INC. Completion Rig BOP Configuration



Minimum BOP installation for a typical open-hole Fruitland Coal well from intermediate TD to TD. 7 1/16" Bore (6" Nominal), 2000psi working pressure/ or greater double stack double gate BOP equipped with three pipe and one blind ram.

Figure #2

MERIDIAN OIL INC.
Typical Fruitland Coal Well
Choke Manifold Configuration



Minimum choke manifold installation for a typical Fruitland Coal well from surface to Total Depth. 2", 2000psi working pressure equipment with two chokes.

Figure #3

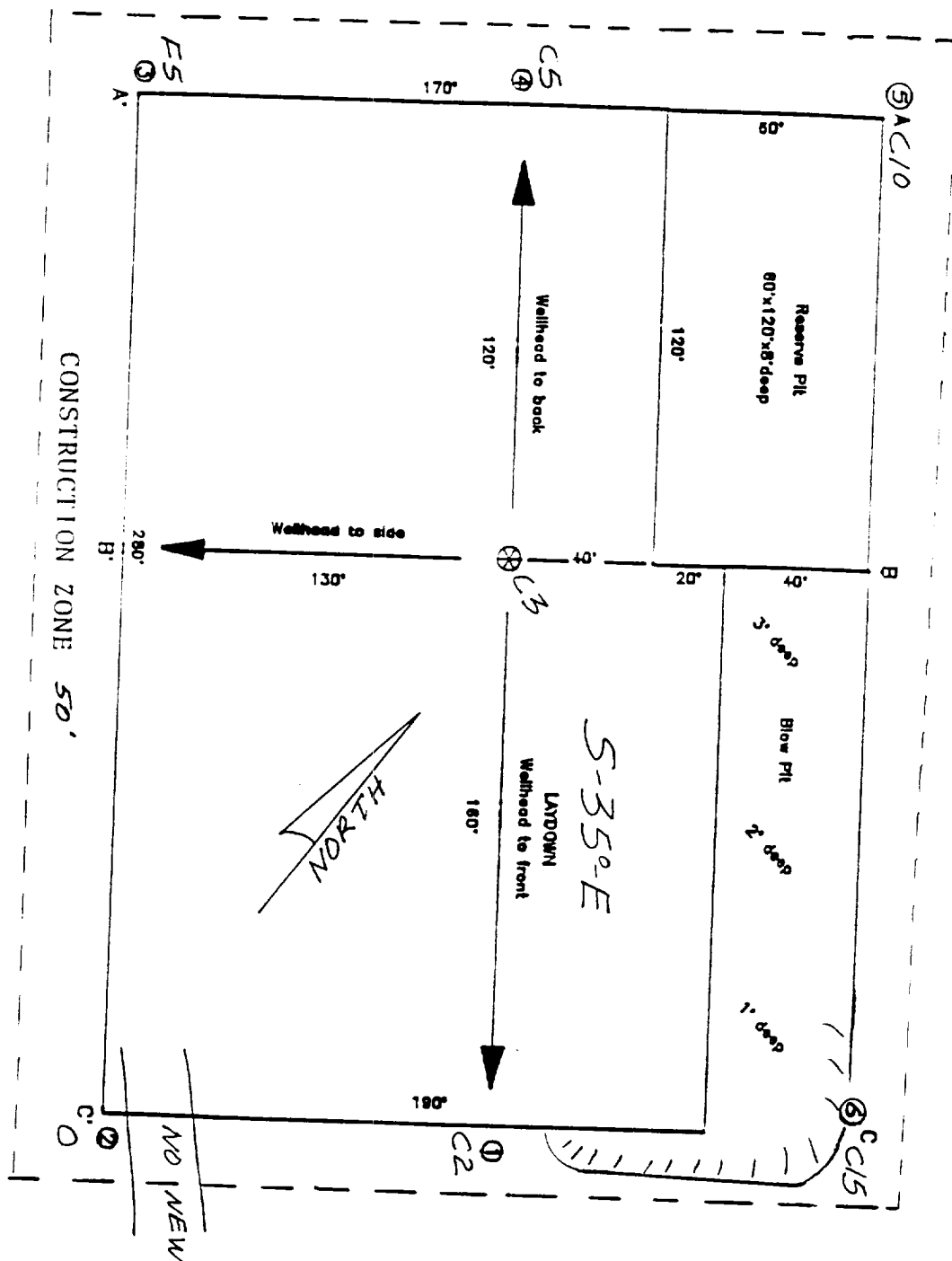
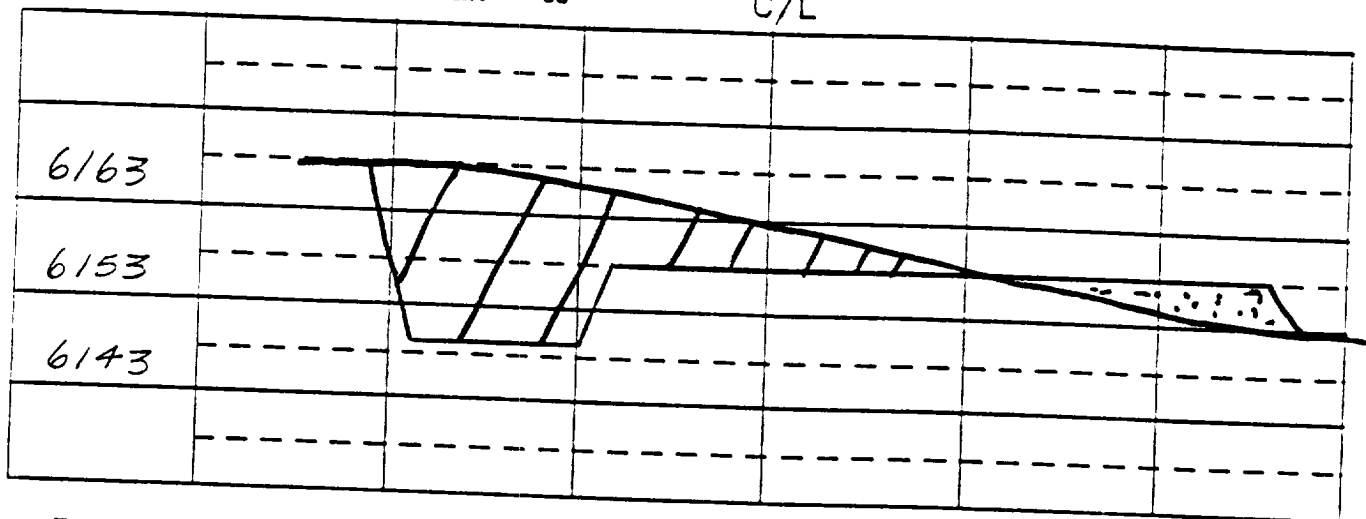


EXHIBIT: _____	
Name: _____	MOI Nordhaus # 712
Footage: _____	790 FNL, 860 FEL,
Sec 11 T-31 -N, R-9 -W NMPM	
Co. San Juan	St. N.M.
Elevation: 6156'	Date: 7-2-90

Plot 2
2/3/90

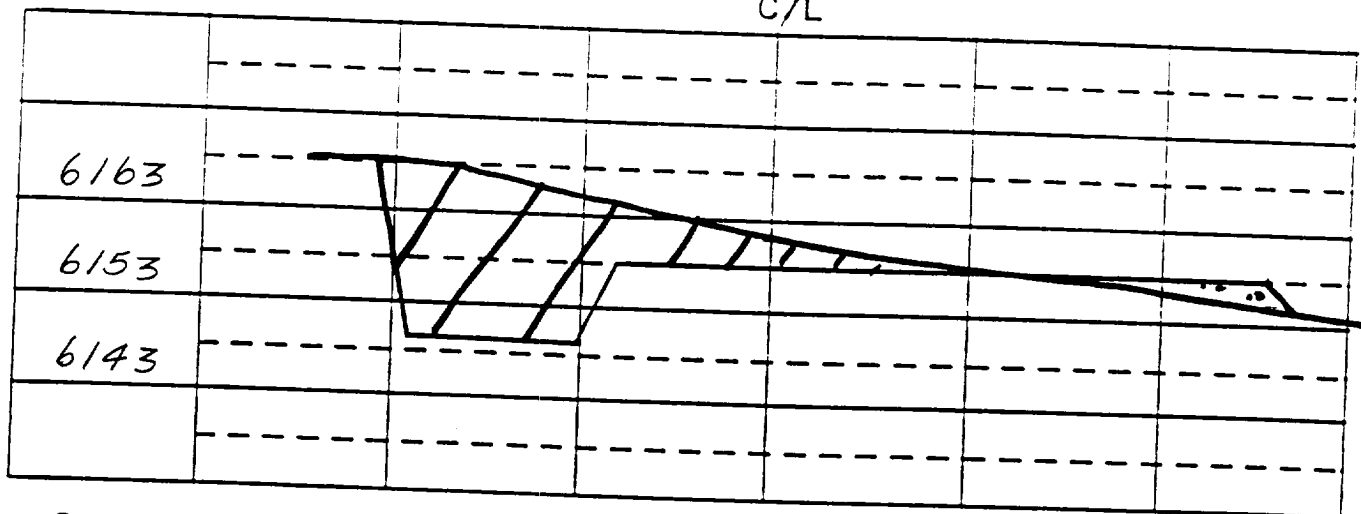
A - A' Vert.:1" = 20' Horiz.:1" = 50'

C/L



B - B'

C/L



C - C'

C/L

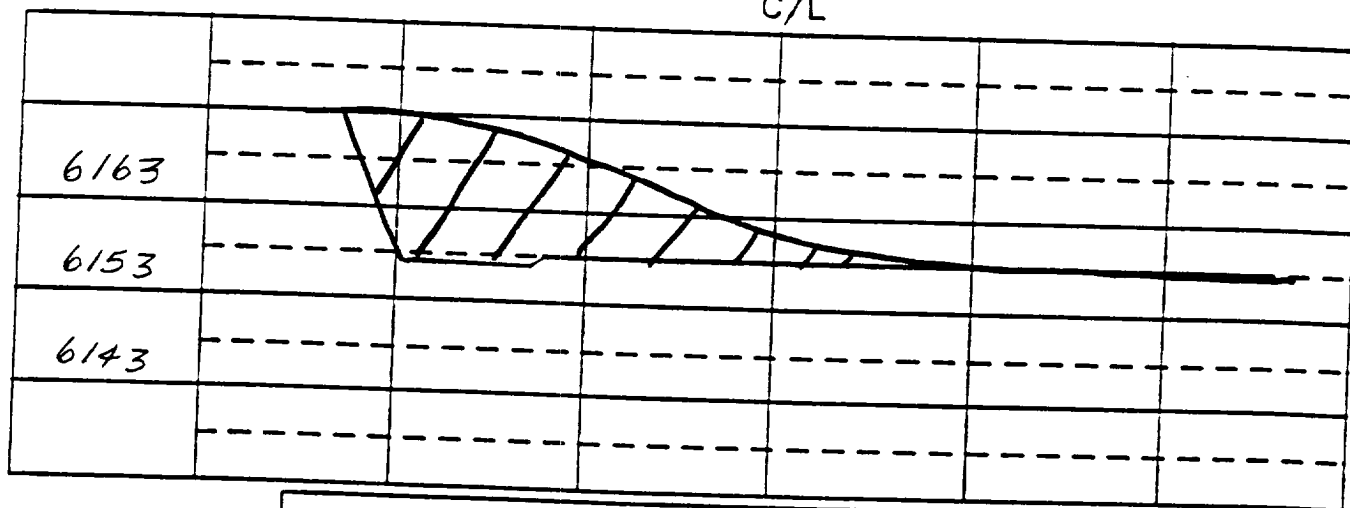
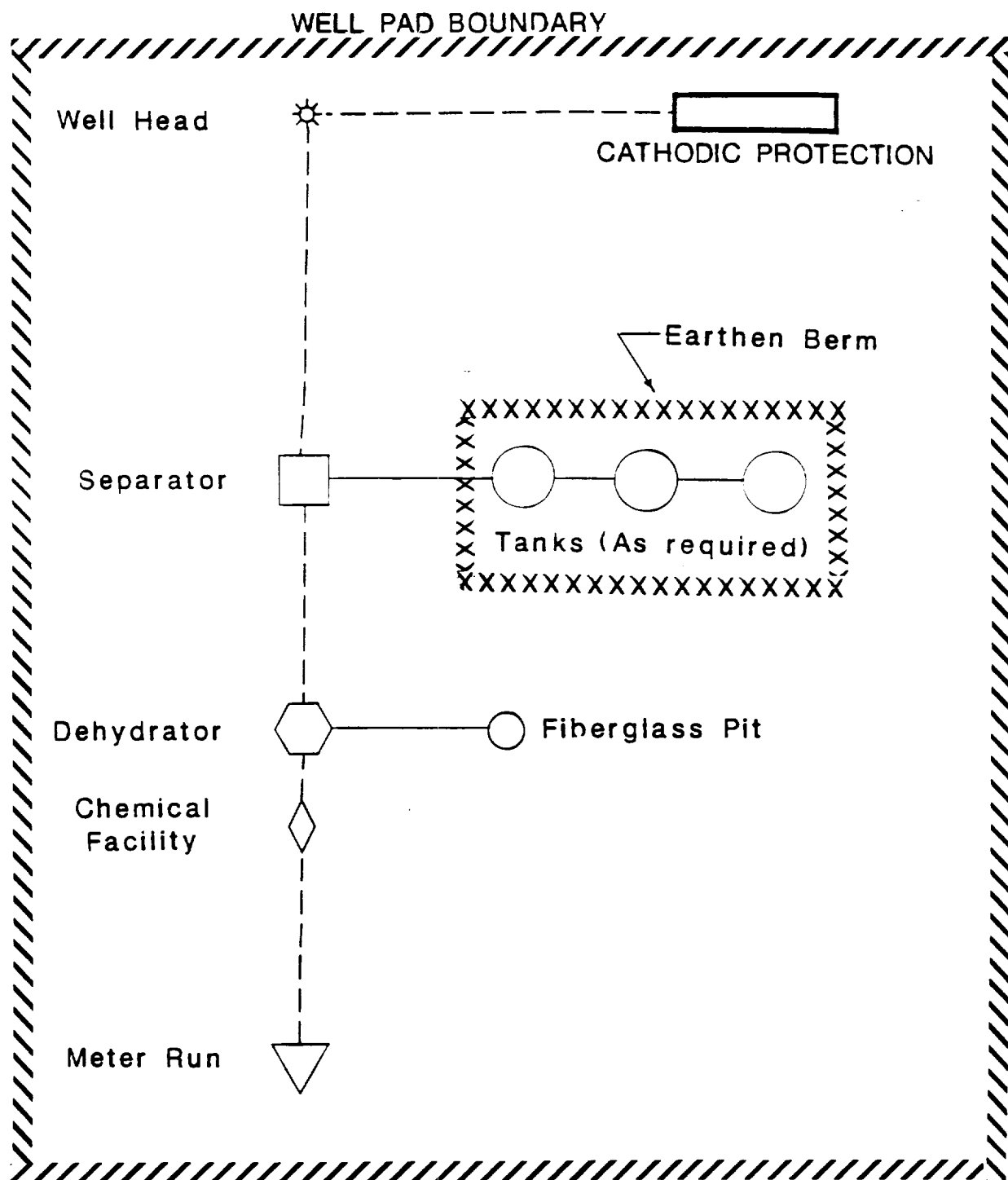


EXHIBIT:	
Name:	MOI Nordhaus # 712
Footage:	790 FNL, 860 FEL,
Sec	11 T- 31 -N,R- 9 -W NMPM
Co.	San Juan St. N.M.
Elevation:	6156' Date: 7-2-90

Plot XC
2/4/90



PLAT #1

MERIDIAN OIL
 ANTICIPATED
 PRODUCTION FACILITIES
 FOR A
 FRUITLAND WELL