

UNITED STATES
DEPARTMENT OF THE INTERIOR
BUREAU OF LAND MANAGEMENT

APPLICATION FOR PERMIT TO DRILL, DEEPEN, OR PLUG BACK

1a. TYPE OF WORK
 DRILL DEEPEN PLUG BACK

b. TYPE OF WELL
 OIL WELL GAS WELL OTHER

2. NAME OF OPERATOR
 Union Texas Petroleum Corp. Attn: Ken E. White

3. ADDRESS OF OPERATOR
 P.O. Box 2120 Houston, TX 77252-2120

4. LOCATION OF WELL (Report location clearly and in accordance with any State requirements.)
 At surface: 2300 FNL & 1850 FEL
 At proposed prod. zone

14. DISTANCE IN MILES AND DIRECTION FROM NEAREST TOWN OR POST OFFICE*
 16 miles East of Aztec

15. DISTANCE FROM PROPOSED* LOCATION TO NEAREST PROPERTY OR LEASE LINE, FT. (Also to nearest drlg. unit line, if any)
 1850'

16. NO. OF ACRES IN LEASE
 2197.12

17. NO. OF ACRES ASSIGNED TO THIS WELL
 316.20 E/320

18. DISTANCE FROM PROPOSED LOCATION* TO NEAREST WELL, DRILLING, COMPLETED, OR APPLIED FOR, ON THIS LEASE, FT.
 2800

19. PROPOSED DEPTH
 3525

20. ROTARY OR CABLE TOOLS
 Rotary

21. ELEVATIONS (Show whether DF, RT, GR, etc.)
 6494

22. APPROX. DATE WORK WILL START*
 5-1-90

5. LEASE DESIGNATION AND SERIAL NO.
 SF-078511

6. IF INDIAN, ALLOTTEE OR TRIBE NAME

7. UNIT AGREEMENT NAME

8. FARM OR LEASE NAME
 Quinn 17

9. WELL NO.
 2

10. FIELD AND POOL, OR WILDCAT
 Basin (Frt Coal)

11. SEC., T., R., M., OR BLK. AND SURVEY OR AREA
 G Sec. 17-31N-8W

12. COUNTY OR PARISH
 San Juan

13. STATE
 NM

This action is subject to technical and procedural review pursuant to 43 CFR 3160.3 and appeal pursuant to 43 CFR 3165.4

PROPOSED CASING AND CEMENTING PROGRAM	DRILLING OPERATIONS AUTHORIZED ARE SUBJECT TO COMPLIANCE WITH ATTACHED "GENERAL REQUIREMENTS"
SIZE OF CASING	QUANTITY OF CEMENT
12 1/4	210 SX
9 5/8	282 SX + 100
8 3/4	
36#	
23#	

We propose to drill in the Fruitland Coal Formation according to 8 pt drilling plan.

RECEIVED
 MAR 01 1990
 OIL CON. DIV.,
 DIST. 3

"Approval of this action does not warrant that the applicant holds legal or equitable rights or title to this lease."

IN ABOVE SPACE DESCRIBE PROPOSED PROGRAM: If proposal is to deepen or plug back, give data on present productive zone and proposed new productive zone. If proposal is to drill or deepen directionally, give pertinent data on subsurface locations and measured and true vertical depths. Give blowout preventer program, if any.

SIGNED Ken E. White TITLE Regulatory Permit Coord. DATE 2/1/90

(This space for Federal or State office use)

APPROVED AS AMENDED

PERMIT NO. _____ APPROVAL DATE _____

APPROVED BY _____ TITLE _____

CONDITIONS OF APPROVAL, IF ANY:

eh

NMOOD

FEB 27 1990
John Shella
 AREA MANAGER

*See Instructions On Reverse Side

RECEIVED CONSERVATION DIVISION

RECEIVED
MAIL ROOM

P.O. Box 2088

Santa Fe, New Mexico 87504-2088

MAR 01 1990

90 FEB -5 AM 11:29

DISTRICT I
Box 1980, Hobbs, NM 88201

DISTRICT II
Drawer DD, Artesia, NM 88210

DISTRICT III
1000 Rio Brazos Rd., Aztec, NM 87410

OIL CON. DIVISION AND ACREAGE DEDICATION PLAT

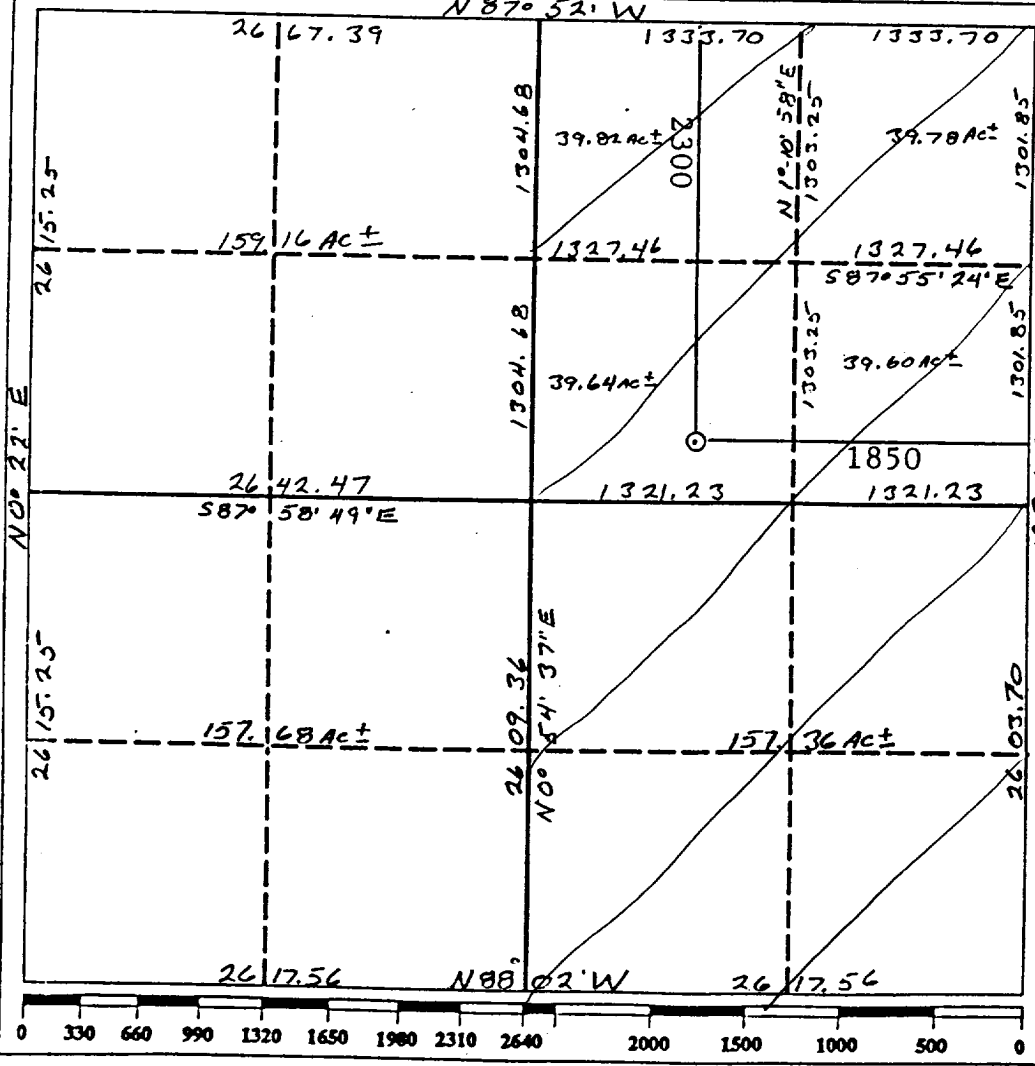
All distances must be from the outer boundaries of the section

Operator UNION TEXAS PETROLEUM			Lease QUINN 17		Well No. FR22
Unit Letter G	Section 17	Township 31N	Range 8W	County SAN JUAN	

Actual Footage Location of Well:
2300 feet from the **NORTH** line and **1850** feet from the **EAST** line

Ground level Elev. 6494	Producing Formation FRUITLAND COAL	Pool BASIN	Dedicated Acreage: 320 316-20 Acres
-----------------------------------	--	----------------------	---

- Outline the acreage dedicated to the subject well by colored pencil or hachure marks on the plat below.
- If more than one lease is dedicated to the well, outline each and identify the ownership thereof (both as to working interest and royalty).
- If more than one lease of different ownership is dedicated to the well, have the interest of all owners been consolidated by communization, unitization, force-pooling, etc.?
 - Yes
 - No
 If answer is "yes" type of consolidation _____
 If answer is "no" list the owners and tract descriptions which have actually been consolidated. (Use reverse side of this form if necessary). _____
 No allowable will be assigned to the well until all interests have been consolidated (by communization, unitization, forced-pooling, or otherwise) or until a non-standard unit, eliminating such interest, has been approved by the Division.



OPERATOR CERTIFICATION

I hereby certify that the information contained herein is true and complete to the best of my knowledge and belief.

Signature: *Ken White*
 Printed Name: **KEN WHITE**
 Position: **REG PERMIT COORD**
 Company: **UNION TEXAS PETROLEUM**
 Date: **2-1-90**

SURVEYOR CERTIFICATION

I hereby certify that the well location shown on this plat was plotted from field notes of actual surveys made by me or under my supervision, and that the same is true and correct to the best of my knowledge and belief.

Date Surveyed: **September 28, 1989**

Signature: *Cecil B. Rutledge*
 Title: **REGISTERED PROFESSIONAL SURVEYOR**
 State: **NEW MEXICO**
 Registration No.: **9672**

UNITED STATES
DEPARTMENT OF THE INTERIOR
BUREAU OF LAND MANAGEMENT

RECEIVED
AUG 3 1990
AM 8:05
FARMINGTON RESOURCE AREA
NEW MEXICO

SUNDRY NOTICES AND REPORTS ON WELLS

1. TYPE OF WELL GAS		5. LEASE NUMBER SF-078511	
2. OPERATOR MERIDIAN OIL INC.		6. IF INDIAN, ALL. OR TRIBE NAME	
3. ADDRESS & PHONE NO. OF OPERATOR P O BOX 4289 FARMINGTON, NM 87499		7. UNIT AGREEMENT NAME	
4. LOCATION OF WELL 2300'FNL 1845'FEL		8. FARM OR LEASE NAME QUINN	
		9. WELL NO. 335	
		10. FIELD, POOL, OR WILDCAT BASIN FRUITLAND COAL	
		11. SEC. T. R. M OR BLK. G SEC. 17 T31N R08W NMPM	
14. PERMIT NO.	15. ELEVATIONS 6494'GL	12. COUNTY SAN JUAN	13. STATE NM

16. SUBSEQUENT REPORT OF: Amended Application for Permit to Drill

17. Describe proposed or completed operations

Operator & Name Change

from:
Reference is made to Union Texas Petroleum's Application for Permit to Drill the Quinn 17 #2 approved 02-27-90.

Meridian Oil Inc. will operate and drill this well as the Quinn #335 at 2300'FNL and 1845'FEL of Section 17 of Township T31N and Range R08W.

Submitted for review:

- C102
- Operations Plan
- BOP Diagrams
- Location Laydown
- Cut and Fill Diagram
- Facilities Diagram

RECEIVED

AUG 3 1990

OIL CON. DIV.
DIST. 3

18. AUTHORIZED BY: *[Signature]*
REGULATORY AFFAIRS

APPROVED

JUL 25 1990

[Signature]
DATE
AREA MANAGER
FARMINGTON RESOURCE AREA

NOTE: THIS FORMAT IS ISSUED IN LIEU OF US BLM FORM 3150-5.

(This space for Federal or State office use)

APPROVED BY _____
CONDITION OF APPROVAL, IF ANY:

TITLE _____

NMOCD

[Handwritten mark]

Submit to Appropriate
District Office
State Lease - 4 copies
Fee Lease - 3 copies

State of New Mexico
Energy, Minerals and Natural Resources Department

Form C-102
Revised 1-1-89

OIL CONSERVATION DIVISION
P.O. Box 2088
Santa Fe, New Mexico 87504-2088

DISTRICT I
P.O. Box 1980, Hobbs, NM 88240

DISTRICT II
P.O. Drawer DD, Artesa, NM 88210

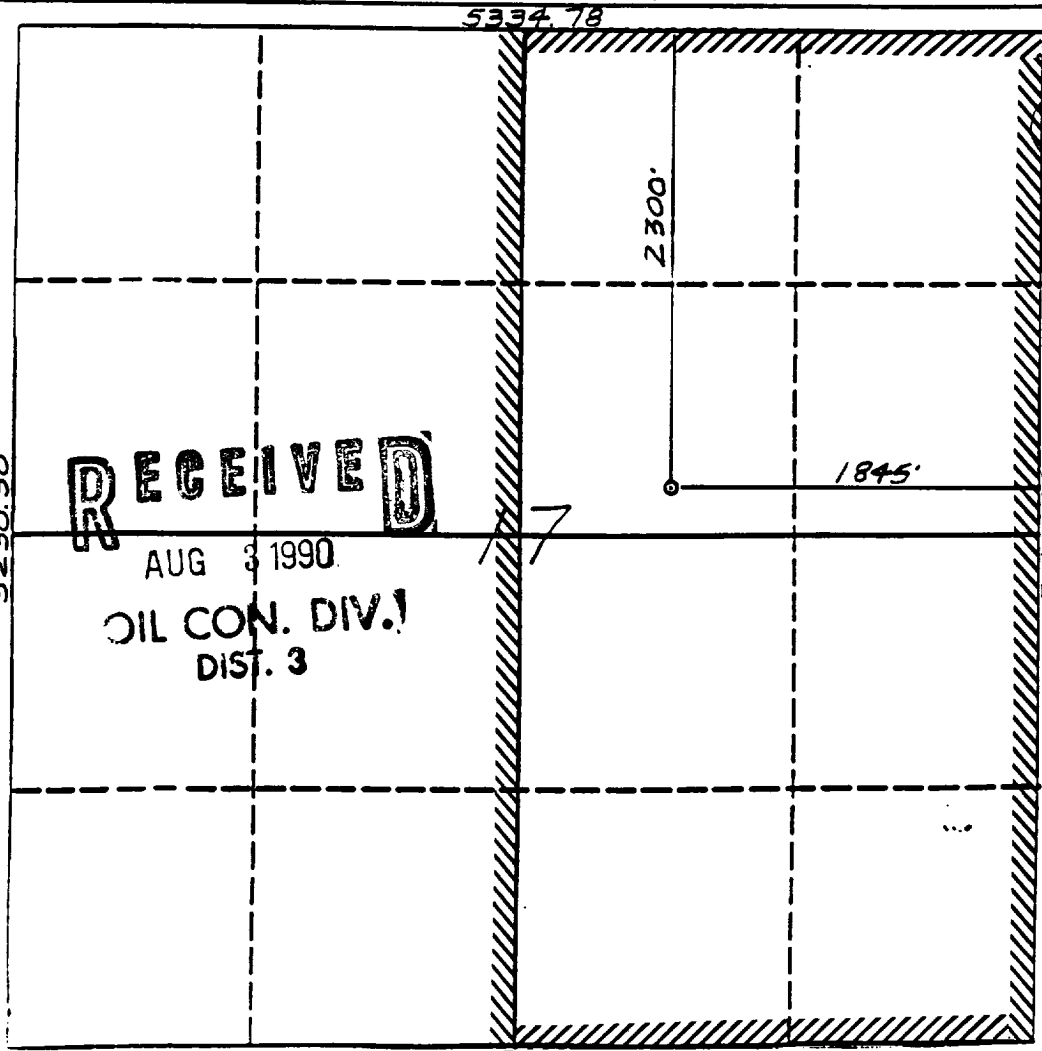
DISTRICT III
1000 Rio Brazos Rd., Aztec, NM 87410

WELL LOCATION AND ACREAGE DEDICATION PLAT

All Distances must be from the outer boundaries of the section

Operator Meridian Oil Inc.		Lease Quinn (SF-078511)		Well No. 335
Unit Letter G	Section 17	Township 31 North	Range 8 West	County San Juan
Actual Footage Location of Well: 2300 feet from the North line and 1845 feet from the East line				
Ground level Elev. 6494'	Producing Formation Fruitland Coal	Pool Basin	Dedicated Acreage: 320 Acres	

- Outline the acreage dedicated to the subject well by colored pencil or hectare marks on the plat below.
- If more than one lease is dedicated to the well, outline each and identify the ownership thereof (both as to working interest and royalty).
- If more than one lease of different ownership is dedicated to the well, have the interest of all owners been consolidated by communitization, unitization, force-pooling, etc.?
 - Yes No If answer is "yes" type of consolidation _____
 If answer is "no" list the owners and tract descriptions which have actually been consolidated. (Use reverse side of this form if necessary).
 No allowable will be assigned to the well until all interests have been consolidated (by communitization, unitization, forced-pooling, or otherwise) or until a non-standard unit, eliminating such interest, has been approved by the Division.



OPERATOR CERTIFICATION

I hereby certify that the information contained herein is true and complete to the best of my knowledge and belief.

Signature: *Peggy Bradfield*

Printed Name: Peggy Bradfield

Position: Regulatory Affairs

Company: Meridian Oil Inc.

Date: 6-25-90

SURVEYOR CERTIFICATION

I hereby certify that the well location shown on this plat was plotted from field notes actual surveys made by me or under my supervision, and that the same is true and correct to the best of my knowledge and belief.

Date Surveyed: 6-20-90

Signature: *Neale C. Edwards*



Certificate No. _____
Neale C. Edwards

Well Name: 335 QUINN
 Sec. 17 T31N R08W
 BASIN FRUITLAND COAL

2300'FNL 1845'FEL
 SAN JUAN NEW MEXICO
 Elevation 6494'GL

Formation tops: Surface- SAN JOSE

Ojo Alamo-	2125		
Kirtland-	2200		
Fruitland-	3060		
Fruitland Coal Top-	3157	Intermediate TD-	3137
Fruitland Coal Base-	3382	Total Depth-	3384
Pictured Cliffs-	3392		

Logging Program: Mud logs from intermediate to total depth.

Mud Program:	Interval	Type	Weight	Visc.	Fl. Loss
	0 - 350	Spud	8.4 - 8.9	40-50	no control
	350 - 3137	Non-dispersed	8.4 - 9.1	30-60	no control
	3137 - 3384	Formation Water	8.4		no control

Casing Program:	Hole Size	Depth Interval	Csg. Size	Weight	Grade
	12 1/4"	0 - 350	9 5/8"	32.3#	H-40
	8 3/4"	0 - 3137	7"	20.0#	K-55
	6 1/4"	3087 - 3384	5 1/2"	15.5#	K-55
Tubing Program:		0 - 3384	2 7/8"	6.5#	J-55

Float Equipment: 9 5/8" surface casing - saw tooth guide shoe. Centralizers will be run in accordance with Onshore Order #2.

7" intermediate casing - guide shoe and self-fill insert float valve. Three centralizers run every other joint above shoe. Run insert float one joint above the guide shoe. Two turbolizing type centralizers - one below and one into the base of the Ojo Alamo @ 2200'. Standard centralizers thereafter every fourth joint up to the base of the surface pipe.

5 1/2" production casing - float shoe on bottom and a pre-drilled liner run to the 7" casing with a minimum 50' overlap. Liner hanger is a double slip grip type.

Wellhead Equipment: 9 5/8" x 7" x 2 7/8" x 11" 3000 psi xmas tree assembly.

Cementing:

9 5/8" surface casing - cement with 279 sacks of class "B" cement with 1/4# flocele/sack and 3% calcium chloride (329 cu ft. of slurry, 200% excess to circulate to surface). WOC 12 hours. Test casing to 600 psi for 30 minutes.

7" intermediate casing - lead with 461 sacks of 65/35 class "B" poz with 6% gel, 2% calcium chloride and 1/2 cu ft. Perlite/sack (10.3 gallons of water/sack) tail with 100 sacks of class "B" with 2% calcium chloride. 1008 cu ft. of slurry, 110% excess to circulate to surface. If hole conditions permit, a 600 ft spacer will be run ahead of the cement slurry to avoid mud contamination of the cement. WOC 12 hours. If cement does not circulate to surface, a temperature log will be run after 8 hours to determine TOC.

5 1/2" liner - do not cement.

BOP and Tests:

Surface to intermediate TD - 11" 2000 psi(minimum) double gate BOP stack (Reference Figure #1). Prior to drilling out surface casing, test rams to 600 psi for 30 minutes.

Intermediate TD to TD - 7 1/16" 2000 psi(minimum) double gate BOP stack (Reference Figure #2). Prior to drilling out intermediate casing, test blind rams and casing to 2500 psi for 30 minutes; all pipe rams and casing to 2500 psi for 30 minutes each.

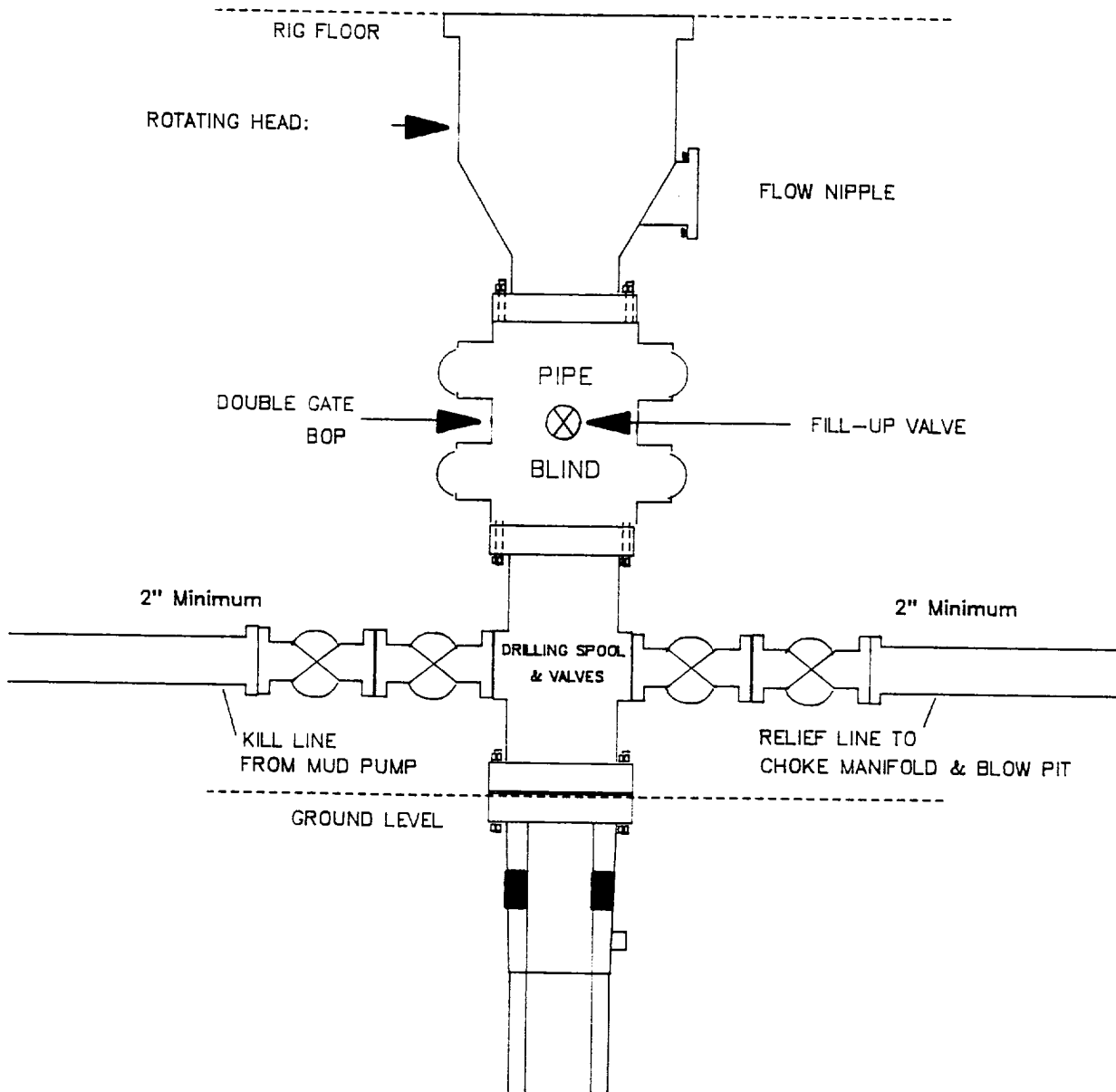
From surface to TD - choke manifold (Reference Figure #3).

Pipe rams will be actuated at least once each day and blind rams actuated once each trip to test proper functioning. An upper kelly cock valve with handle and drill string safety valves to fit each drill string will be maintained and available on the rig floor.

Additional Information:

- * The Fruitland coal formation will be completed.
- * Anticipated Fruitland pore pressure is 1650 psi.
- * This gas is dedicated.
- * The E/2 of Section 17 is dedicated to this well.
- * New casing will be utilized.
- * Cementing Contractor will provide the BLM with a chronological log including the pump rate and pressure, and the slurry density and volume for all cement jobs.
- * Pipe movement (either rotation or reciprocation) will be done if hole conditions permit.

MERIDIAN OIL INC.
 Drilling Rig
 BOP Configuration

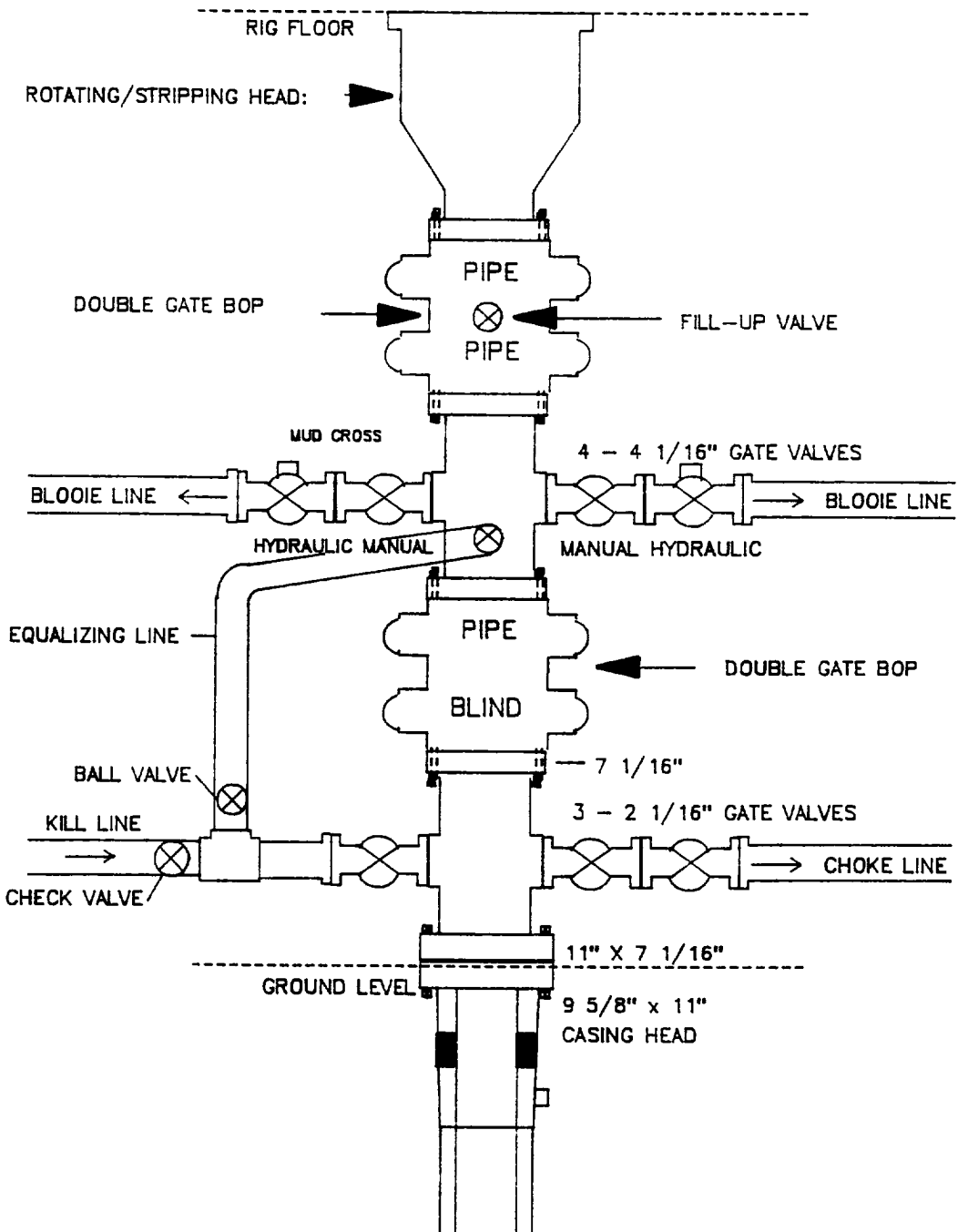


Minimum BOP installation for a typical Fruitland Coal well from surface to Intermediate casing point. 11" Bore (10" Nominal), 2000psi minimum working pressure double gate BOP to be equipped with blind and pipe rams. A Schaffer Type 50 equivalent rotating head to be installed on the top of BOP. All equipment is 2000psi working pressure/or greater.

Figure #1

MERIDIAN OIL INC.

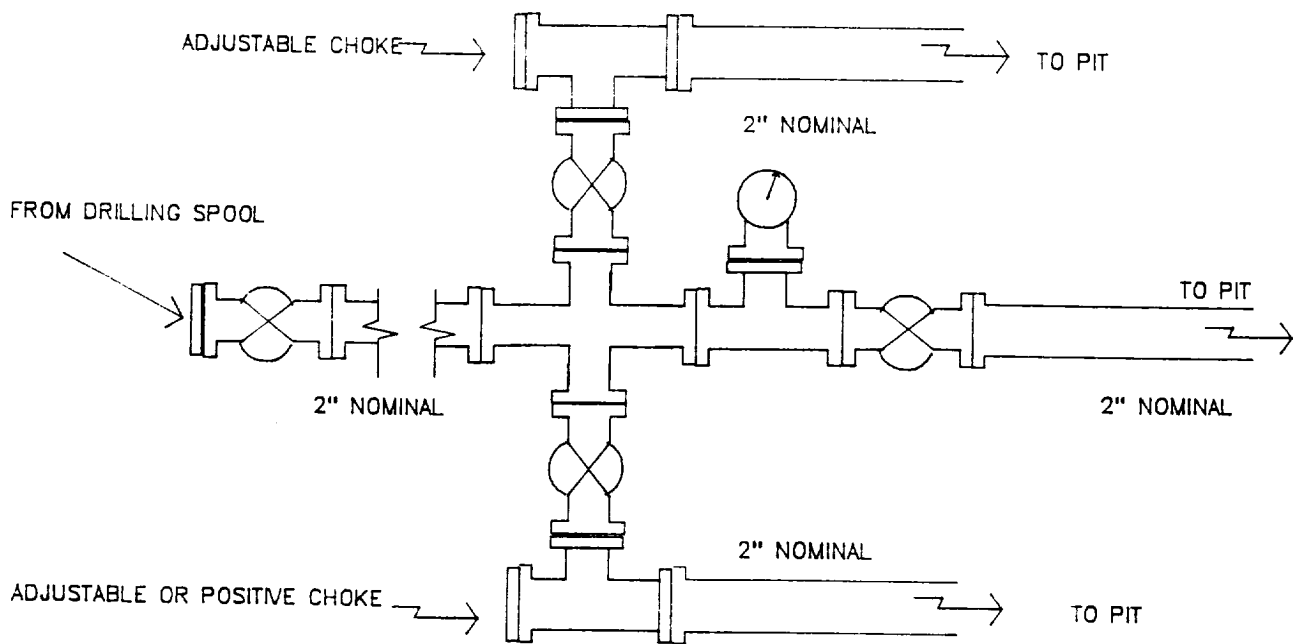
Completion Rig
BOP Configuration



Minimum BOP installation for a typical open-hole Fruitland Coal well from intermediate TD to TD. 7 1/16" Bore (6" Nominal), 2000psi working pressure/ or greater double stack double gate BOP equipped with three pipe and one blind ram.

Figure #2

MERIDIAN OIL INC.
Typical Fruitland Coal Well
Choke Manifold Configuration



Minimum choke manifold installation for a typical Fruitland Coal well from surface to Total Depth. 2", 2000psi working pressure equipment with two chokes.

Figure #3

2080 NEW ROAD
0-87%

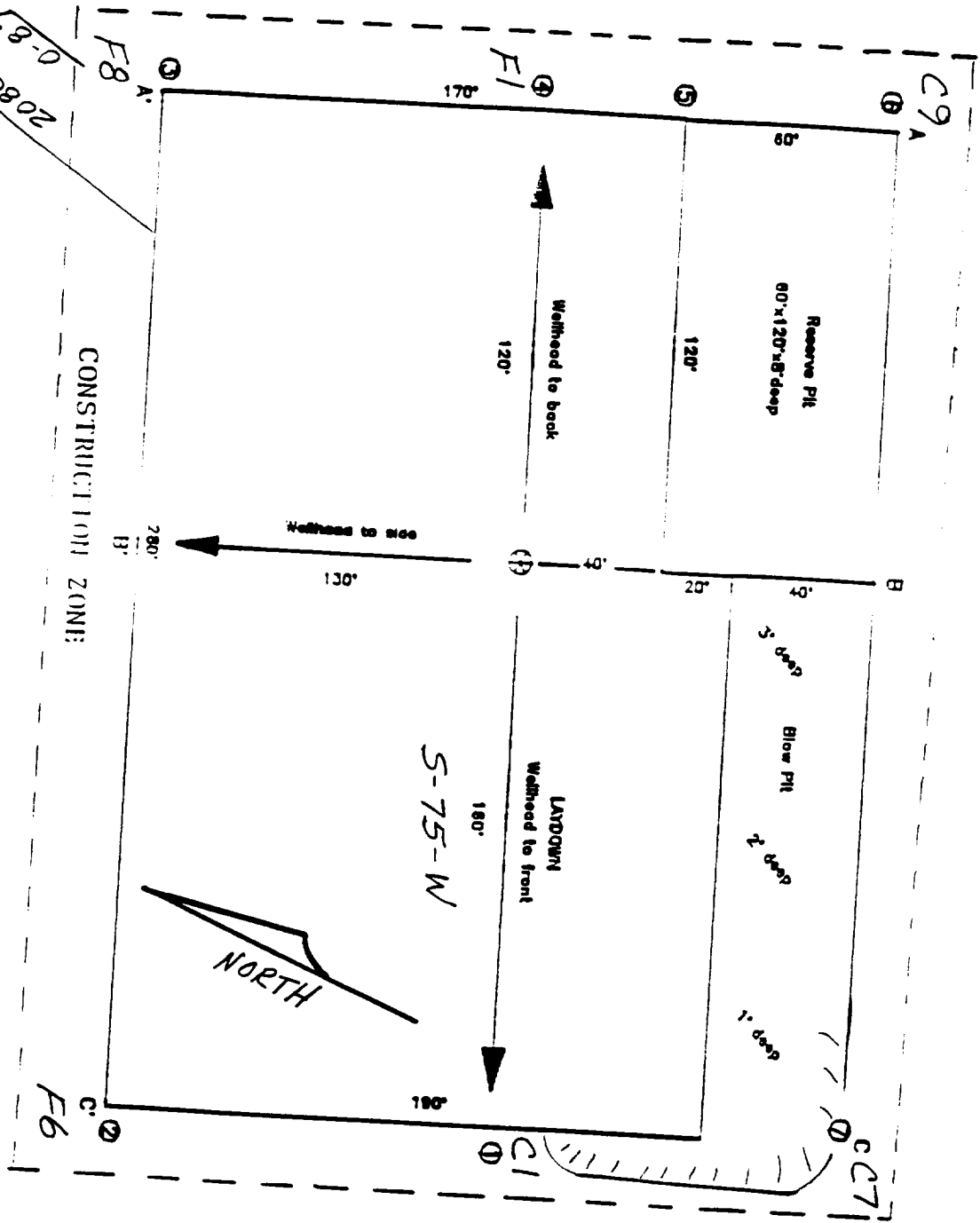


EXHIBIT: _____

Name: MOI QUINN #335

Footage: 2300' FNL 1845' FEL

Sec 17 T- 31 -N, R- 8 -W NMPM

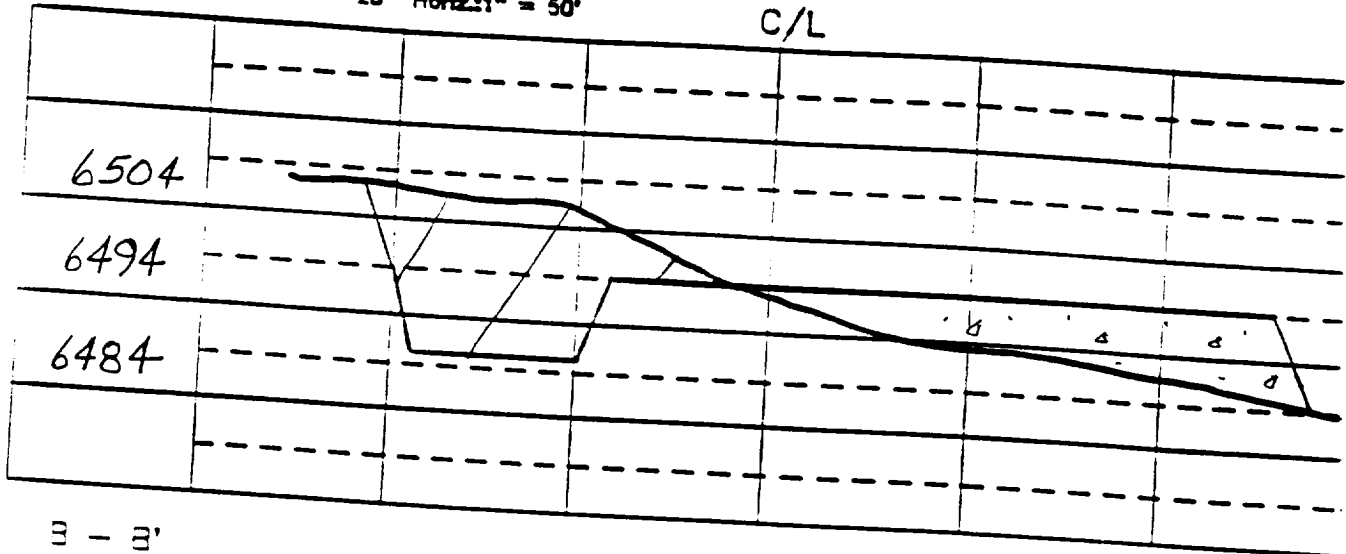
Co. SAN JUAN St. NM

Elevation: 6494' Date: 6-20-90

Plat 2
2/3/90

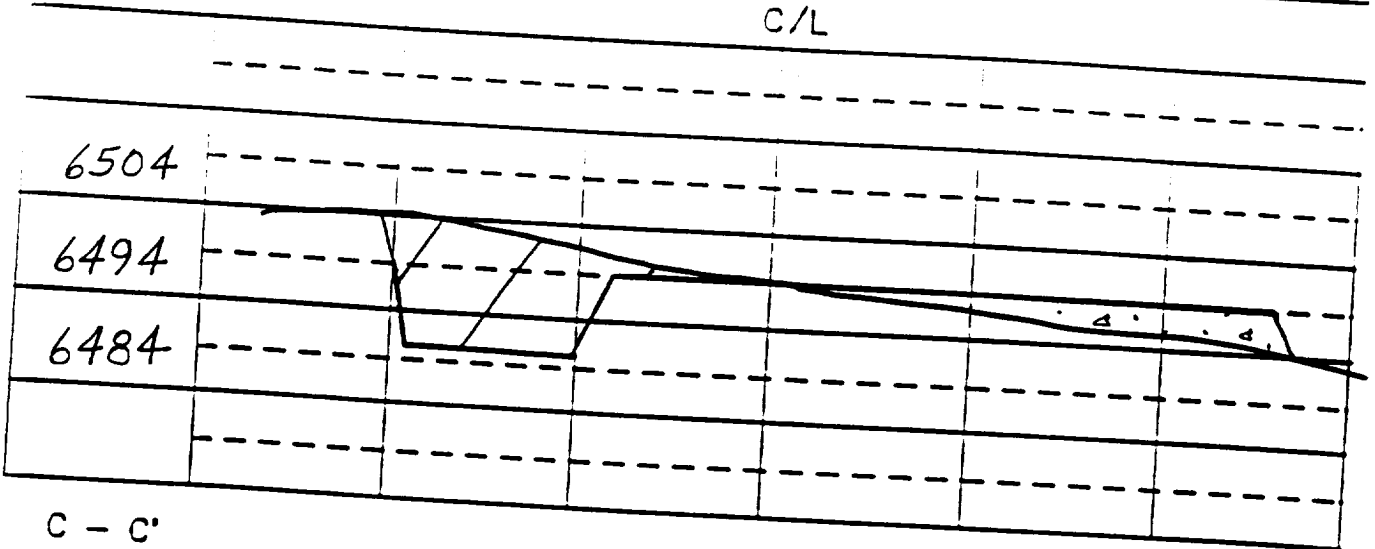
A - A' Vert: 1" = 20' Horiz: 1" = 50'

C/L



B - B'

C/L



C - C'

C/L

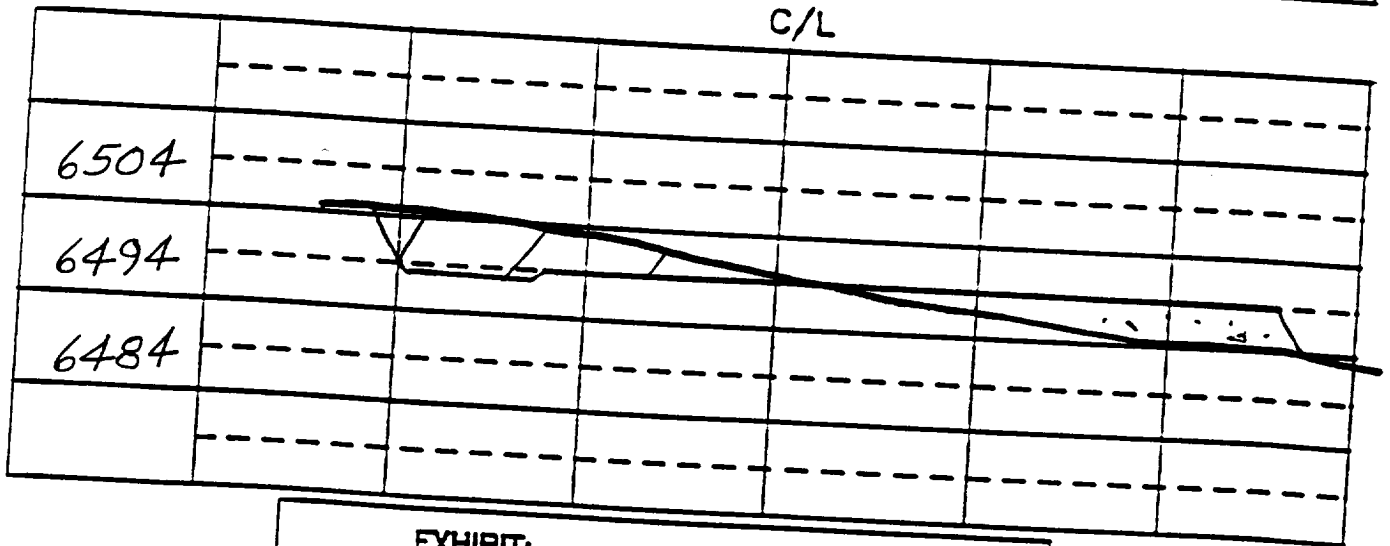


EXHIBIT: _____

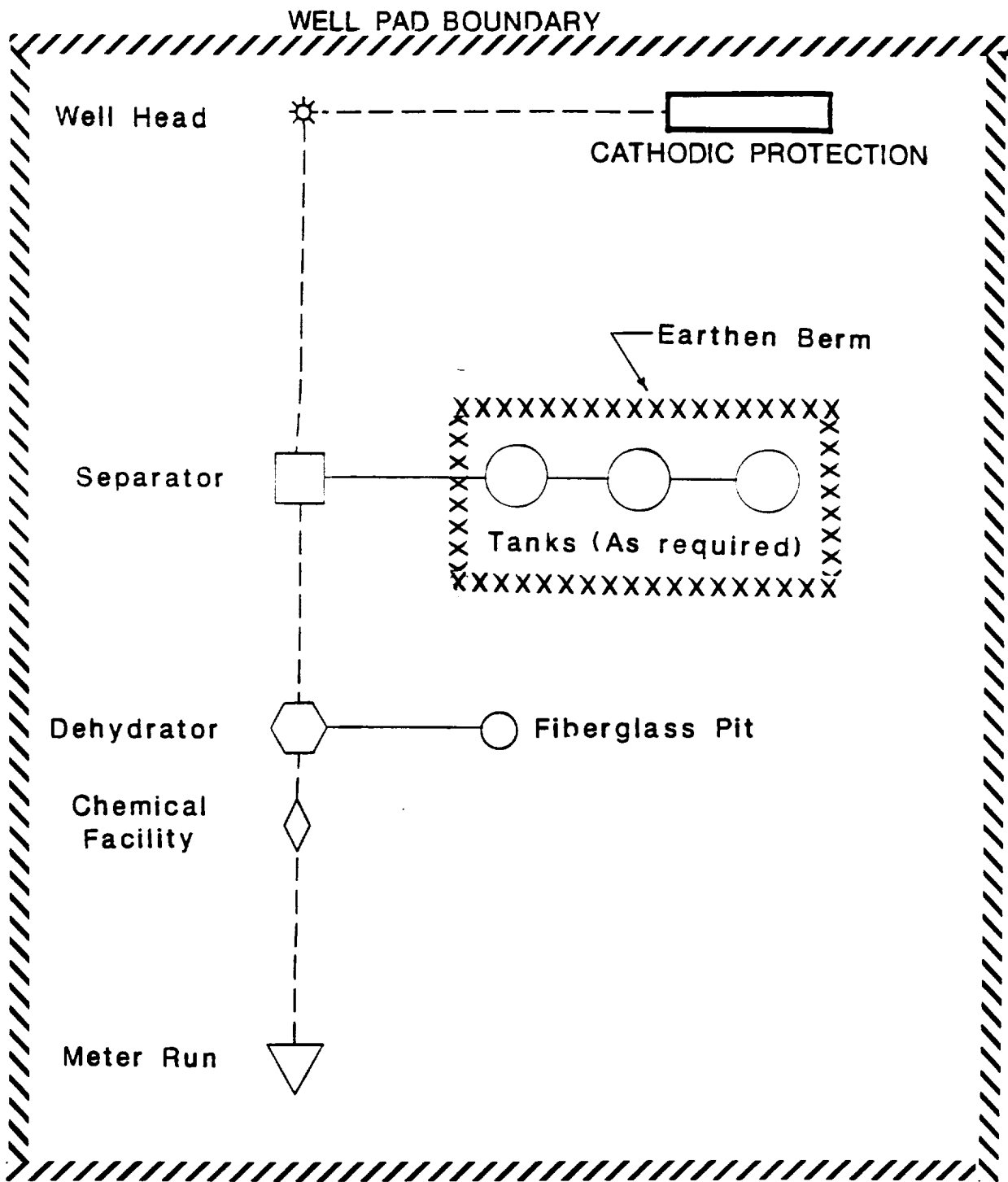
Name: MOI QUINN #335

Footage: 2300' FNL 1845' FEL

Sec 17 T- 31 -N.R- 8 -W NMPM

Co. SAN JUAN St. N.M.

Elevation: 6494' Date: 6-20-90



PLAT #1

MERIDIAN OIL
 ANTICIPATED
 PRODUCTION FACILITIES
 FOR A
 FRUITLAND WELL