

Submit to Appropriate
District Office
State Lease - 6 copies
Fee Lease - 5 copies

State of New Mexico
Energy, Minerals and Natural Resources Department

Form C-101
Revised 1-1-89

DISTRICT I
P.O. Box 1980, Hobbs, NM 88240

DISTRICT II
P.O. Drawer DD, Artesia, NM 88210

DISTRICT III
1000 Rio Brazos Rd., Aztec, NM 87410

OIL CONSERVATION DIVISION

Santa Fe, New Mexico 87504-2088

MAR 16 1990

OIL CON. DIV.

API NO. (assigned by OCD on New Wells)

30-045-27643

5. Indicate Type of Lease

STATE ☐

FEE ☒

6. State Oil & Gas Lease No.

APPLICATION FOR PERMIT TO DRILL, DEEPEN, OR PLUG BACK

1a. Type of Work:

DRILL ☒

RE-ENTER ☐

DEEPEN ☐

PLUG BACK ☐

b. Type of Well:

OIL
WELL ☐

GAS
WELL ☒

OTHER

SINGLE
ZONE ☒

MULTIPLE
ZONE ☐

7. Lease Name or Unit Agreement Name

Quinoco Yager N

2. Name of Operator

Quinoco Petroleum, Inc.

8. Well No.

5

3. Address of Operator

P. O. Box 378111, Denver, CO 80237

9. Pool name or Wildcat

Basin Fruitland Coal

4. Well Location

Unit Letter N : 1160 Feet From The South Line and 2315 Feet From The West Line

Section 3

Township 31N

Range 7W

NMPM San Juan

County

10. Proposed Depth

3315'

11. Formation

Fruitland

12. Rotary or C.T.

Rotary

13. Elevations (Show whether DF, RT, GR, etc.)

6564.0 GL

14. Kind & Status Plug. Bond

National Blanket

15. Drilling Contractor

16. Approx. Date Work will start

May 2, 1990

17.

PROPOSED CASING AND CEMENT PROGRAM

31-7-75

SIZE OF HOLE	SIZE OF CASING	WEIGHT PER FOOT	SETTING DEPTH	SACKS OF CEMENT	EST. TOP
12 - 1/4"	9 - 5/8"	32#	350'	210 sxs "B"	Surf.
8 - 3/4"	7"	17#	3,110' 254	200 sxs 65/38	
	5 1/2"	15.5#	2035-3315	60 sxs "B"	Surf.

Quinoco Petroleum, Inc. wishes to advise that we intend to drill a 12-1/4" hole with spud mud to 350' and set 9-5/8", 32.0#, K-55 LT&C casing to 350' cementing to surface with 210 sxs (248 cu ft) Class B cement with 2% CaCl2. Wait on cement 12 hours. Nipple up and test BOP. Drill 8-3/4" hole out of surface to 3,110' with mud. Log well. Set 7", 17#, J-55, LT&C production casing to 3,110' cementing to surface with 200 sxs (368 cu ft) 65/35 POZ with 6% gel and 12-1/4# gilsonite/sk, tailed by 60 sxs (82 cu ft) Class B cement with 2% CaCl2. Drillout intermediate w/6-1/4" bit on 3-1/2" drill pipe using service rig. After drilling coal, rig up compressor and air circulation equipment, blow well 2-3 days until rate stabilizes. Snub 5-1/2" liner. Hang off liner w/ hydraulic set pack-off hanger. Perf. 5-1/2" liner pay section in the Fruitland Coal. Clean up well and install standard production equipment. Test well to reserve pit for a period not to exceed 30 days. Connect well to a gathering system.

BOP- RP 53

IN ABOVE SPACE DESCRIBE PROPOSED PROGRAM: IF PROPOSAL IS TO DEEPEN OR PLUG BACK, GIVE DATA ON PRESENT PRODUCTIVE ZONE AND PROPOSED NEW PRODUCTIVE ZONE. GIVE BLOWOUT PREVENTER PROGRAM, IF ANY.

I hereby certify that the information above is true and complete to the best of my knowledge and belief.

SIGNATURE Holly S. Richardson TITLE Sr. Ops. Eng. Tech. DATE March 13, 1990

TYPE OR PRINT NAME Holly S. Richardson TELEPHONE NO. (303) 850-6322

(This space for State Use)

APPROVED BY Emmet R. Borch DEPUTY OIL & GAS INSPECTOR, DIST. #3 DATE MAR 20 1990

CONDITIONS OF APPROVAL, IF ANY:

APPROV. EXPIRES 9-20-90
UNLESS DRILLING IS COMMENCED.
SPUD NOTICE MUST BE SUBMITTED
WITHIN 10 DAYS.

R-7061

100-443886

Submit to Appropriate
District Office
State Lease - 4 copies
Fee Lease - 3 copies

State of New Mexico
Energy, Minerals and Natural Resources Department

Form C-11
Revised 1-1-87

OIL CONSERVATION DIVISION

P.O. Box 2088
Santa Fe, New Mexico 87504-2088

DISTRICT I
P.O. Box 1980, Hobbs, NM 88240

DISTRICT II
P.O. Drawer DD, Artesia, NM 88210

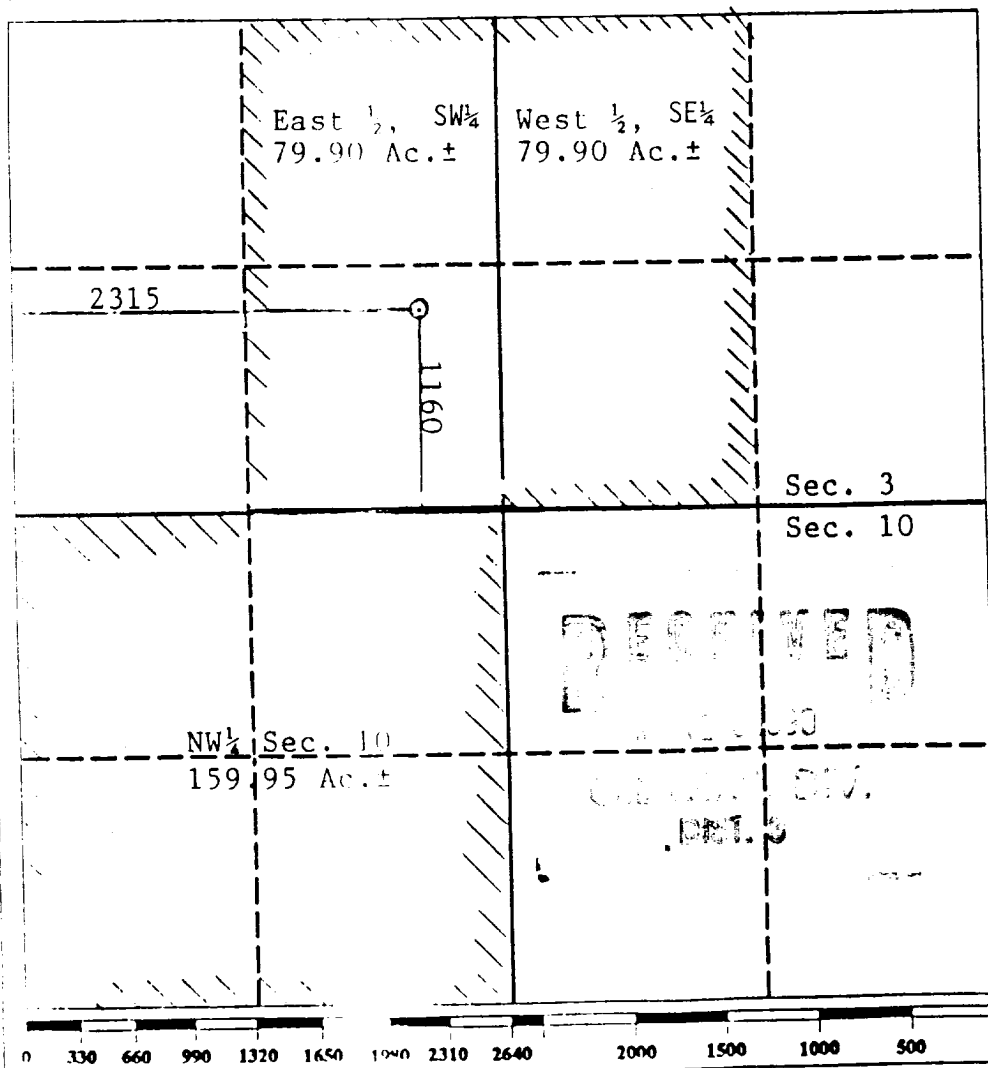
DISTRICT III
1000 Rio Brazos Rd., Aztec, NM 87410

WELL LOCATION AND ACREAGE DEDICATION PLAT

All Distances must be from the outer boundaries of the section

Operator QUINOCO Petroleum, Inc.		Lease Quinoco Yager N		Well No. 5
Unit Letter N	Section 3	Township 31N	Range 7W	County San Juan
Actual Footage Location of Well: 1160 feet from the South line and 2315 feet from the West line				
Ground level Elev. 6564.0	Producing Formation Fruitland	Pool Basin Fruitland Coal	Dedicated Acreage 319.75 Acres	

- Outline the acreage dedicated to the subject well by colored pencil or hatchure marks on the plat below.
- If more than one lease is dedicated to the well, outline each and identify the ownership thereof (both as to working interest and royalty).
- If more than one lease of different ownership is dedicated to the well, have the interest of all owners been consolidated by communitization, unitization, force-pooling, etc?
☐ Yes ☒ No If answer is "yes" type of consolidation _____
If answer is "no" list the owners and tract descriptions which have actually been consolidated. (Use reverse side of this form if necessary.)
No allowable will be assigned to the well until all interests have been consolidated (by communitization, unitization, forced-pooling, or otherwise) or until a non-standard unit, eliminating such interest, has been approved by the Division.



OPERATOR CERTIFICATION

I hereby certify that the information contained herein is true and complete to the best of my knowledge and belief.

Signature
Holly S. Richardson

Printed Name
Holly S. Richardson

Position
Sr. Ops. Eng. Tech.

Company
Quinoco Petroleum, Inc.

Date
March 13, 1990

Date

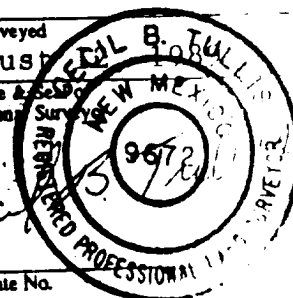
SURVEYOR CERTIFICATION

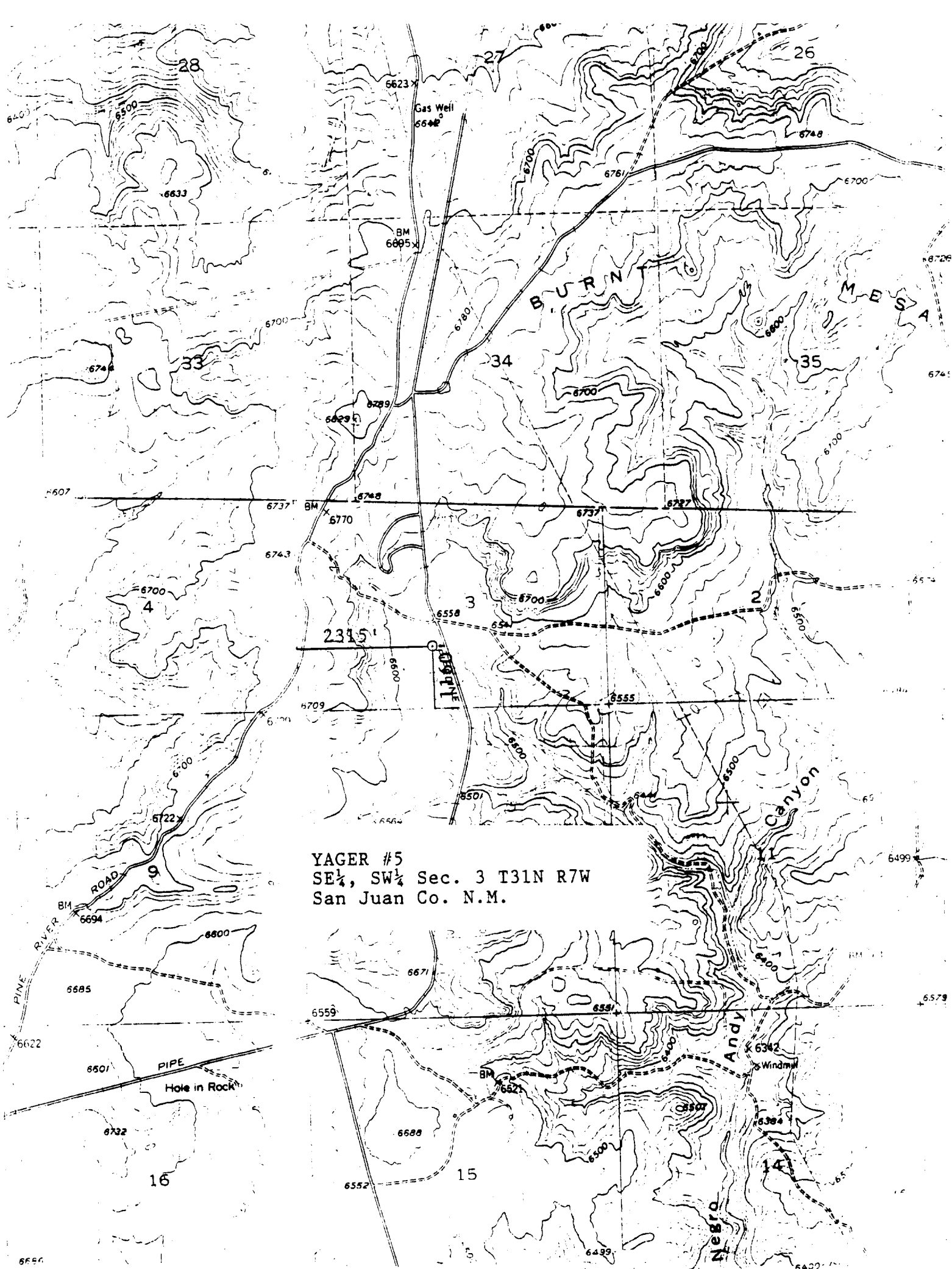
I hereby certify that the well location shown on this plat was plotted from field notes or actual surveys made by me or under my supervision, and that the same is true and correct to the best of my knowledge and belief.

Date Surveyed
August 1990

Signature & Seal
Professional Surveyor

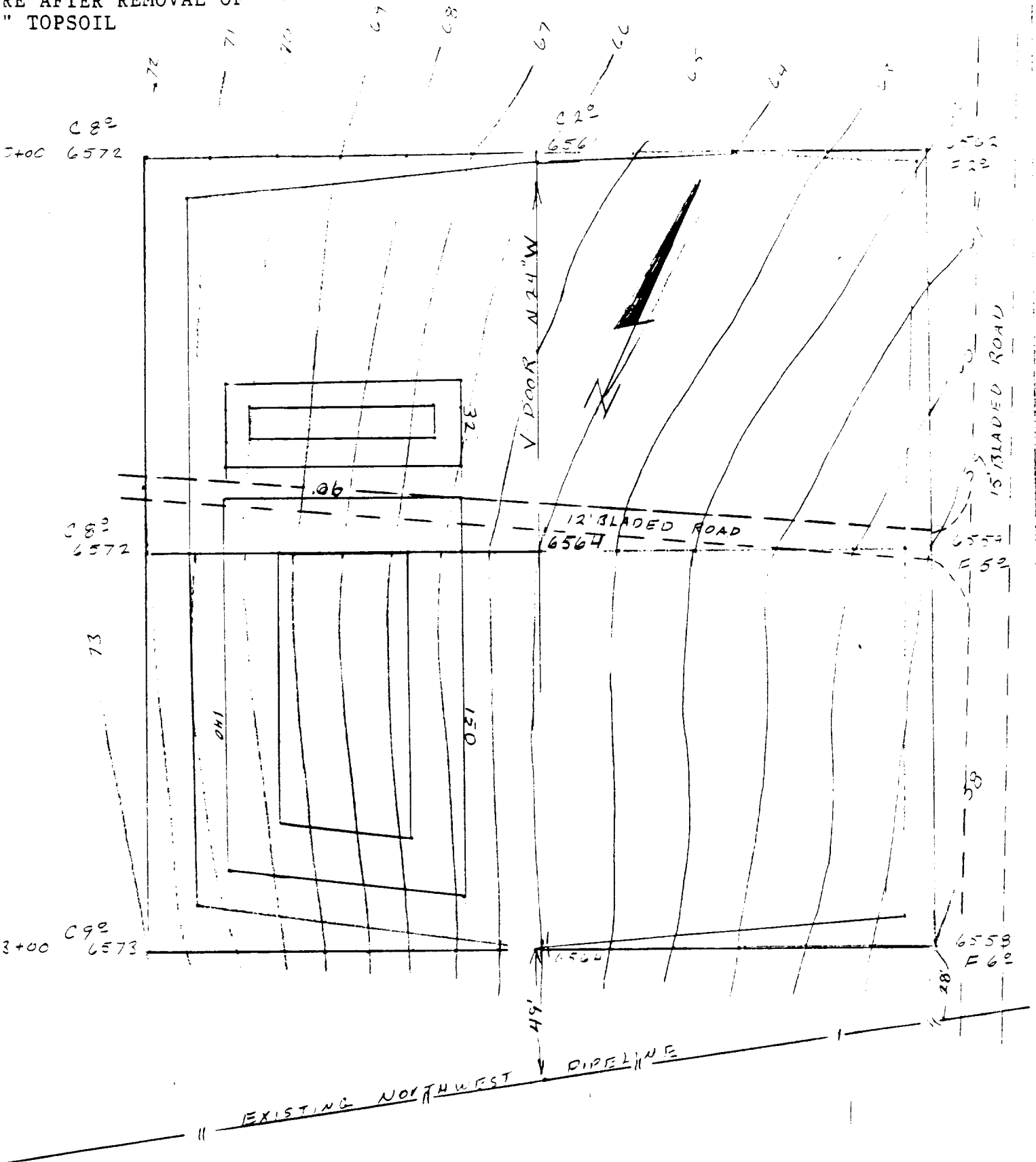
Certificate No.
9672





QUINOCO

NOTE: CUTS AND FILLS
ARE AFTER REMOVAL OF
" TOPSOIL



YAGER #5
1160 F/SL & 2315 F/WL
Section 3 T31N R7W N.M.P.M.
San Juan Co., NM

QUINOCO

YAGER #5

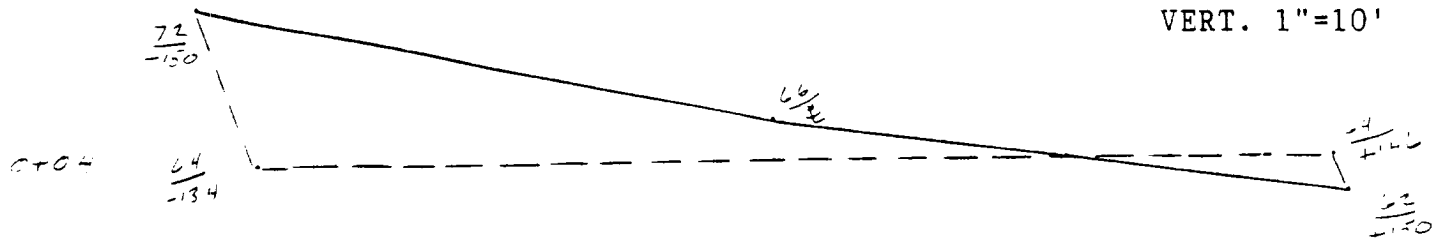
NOTE: SCALE

HORZ. 1"=50'
VERT. 1"=10'

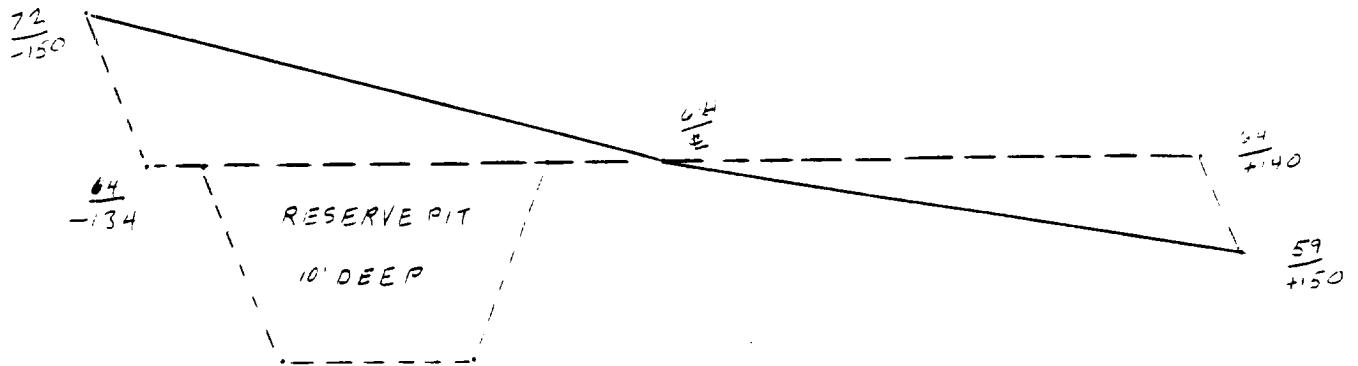
O-CUT and Fill Section

NOTE: FINISH ELEV. 6564.0

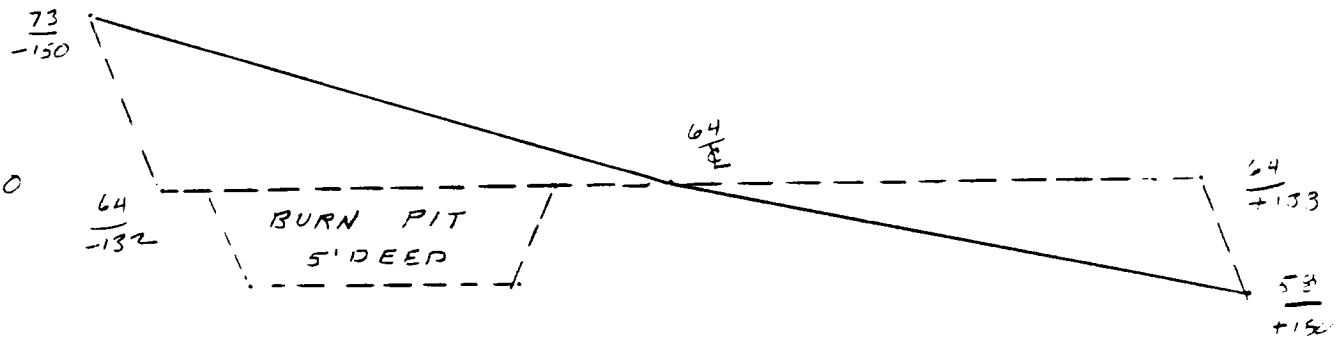
0+00



+50



2+90



3+00

O-CUT & FILL SECTION

QUINOCO

TOP SOIL.....	1667 CU. YDS.
AVERAGE CUT.....	6872 CU. YDS.
AVERAGE FILL.....	2254 CU. YDS.
PIT EXCAVATION.....	3567 CU. YDS.