

UNITED STATES
DEPARTMENT OF THE INTERIOR
BUREAU OF LAND MANAGEMENT

APPLICATION FOR PERMIT TO DRILL, DEEPEN, OR PLUG BACK

1a. TYPE OF WORK

DRILL ☒

DEEPEN ☐

PLUG BACK ☐

b. TYPE OF WELL

OIL
WELL ☐

GAS
WELL ☒

OTHER ☐

SINGLE
ZONE ☒

MULTIPLE
ZONE ☐

2. NAME OF OPERATOR

Southland Royalty Company

3. ADDRESS OF OPERATOR

PO Box 4289, Farmington, NM 87499

4. LOCATION OF WELL (Report location clearly and in accordance with any State requirements.)*

At surface

1840'S, 1460'W

At proposed prod. zone

14. DISTANCE IN MILES AND DIRECTION FROM NEAREST TOWN OR POST OFFICE*

3 miles from Abe's Store

15. DISTANCE FROM PROPOSED*

LOCATION TO NEAREST
PROPERTY OR LEASE LINE, FT. 1460'
(Also to nearest drig. unit line, if any)

16. NO. OF ACRES IN LEASE

160 1280

17. NO. OF ACRES ASSIGNED

TO THIS WELL 160.00

18. DISTANCE FROM PROPOSED LOCATION*

TO NEAREST WELL, DRILLING, COMPLETED,
OR APPLIED FOR, ON THIS LEASE, FT. 200'

19. PROPOSED DEPTH

3090'

20. ROTARY OR CABLE TOOLS

Rotary

21. ELEVATIONS (Show whether DF, RT, GR, etc.)

6227' GL This action is subject to technical and
procedural review pursuant to 43 CFR 3160.3

22. APPROX. DATE WORK WILL START*

23. AND CEMENTING PROGRAM

DRILLING OPERATIONS AUTHORIZED ARE
SUBJECT TO COMPLIANCE WITH ATTACHED
"GENERAL REQUIREMENTS"

SIZE OF HOLE	SIZE OF CASING	WEIGHT PER FOOT	SETTING DEPTH	QUANTITY OF CEMENT
12 1/4"	9 5/8"	32.3#	400'	250 cf. circulated
8 3/4"	7"	20.0#	2900'	283 cf to cover Ojo Alamo
6 1/4"	5 1/2" liner	23.0#	3090'	do not cement

The Fruitland formation will be completed.

A 3000 psi WP and 6000 psi test double gate preventer equipped with
blind and pipe rams will be used for blow out prevention on this well.

This gas is dedicated.

The SW/4 of Section 34 is dedicated to this well.

IN ABOVE SPACE DESCRIBE PROPOSED PROGRAM: If proposal is to deepen or plug back, give data on present productive zone and proposed new productive zone. If proposal is to drill or deepen directionally, give pertinent data on subsurface locations and measured and true vertical depths. Give blowout preventer program, if any.

24.

SIGNED

[Signature]

TITLE

Drilling Clerk

DATE

04-14-88

(This space for Federal or State office use)

PERMIT NO.

APPROVAL DATE

APPROVED BY

TITLE

DATE

CONDITIONS OF APPROVAL, IF ANY:

*See Instructions On Reverse Side

OIL CONSERVATION DIVISION

STATE OF NEW MEXICO
ENERGY AND MINERALS DEPARTMENTP. O. BOX 2688
SANTA FE, NEW MEXICO 87501Form C-102
Revised 10-1-78

All distances must be from the outer boundaries of the Section.

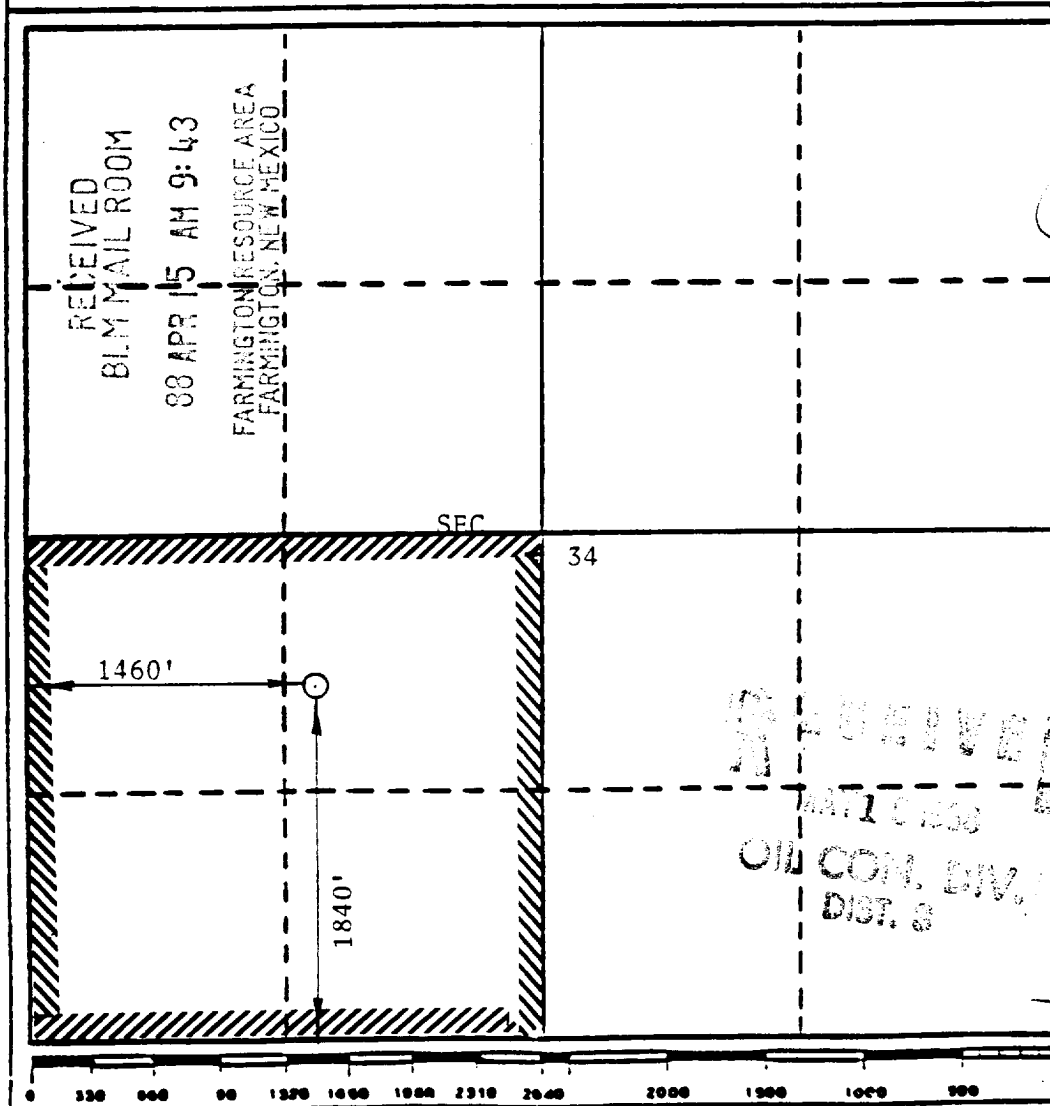
Operator SOUTHLAND ROYALTY COMPANY			Lease HALE (SF-079037)		Well No. 351
Unit Letter K	Section 34	Township 31-N	Range 8-W	County SAN JUAN	
Actual Footage Location of Wells 1840 feet from the SOUTH line and 1460 feet from the WEST line					
Ground Level Elev. 6227	Producing Formation Fruitland (C&L)		Pool Undesignated		Dedicated Acreage: 160 Acres

1. Outline the acreage dedicated to the subject well by colored pencil or hatchure marks on the plat below.
2. If more than one lease is dedicated to the well, outline each and identify the ownership thereof (both as to working interest and royalty).
3. If more than one lease of different ownership is dedicated to the well, have the interests of all owners been consolidated by communitization, unitization, force-pooling, etc?

☐ Yes ☐ No If answer is "yes," type of consolidation _____

If answer is "no," list the owners and tract descriptions which have actually been consolidated. (Use reverse side of this form if necessary.) _____

No allowable will be assigned to the well until all interests have been consolidated (by communitization, unitization, forced-pooling, or otherwise) or until a non-standard unit, eliminating such interests, has been approved by the Division.



CERTIFICATION

I hereby certify that the information contained herein is true and complete to the best of my knowledge and belief.

Name
Drilling Clerk
Position
Southland Royalty Co
CompanyDate
4-14-88

ISAAC L. WEAVER
NEW MEXICO
REGISTERED PROFESSIONAL ENGINEER
No. 8966

I hereby certify the well location shown on this plat was plotted from field notes of actual surveys made by me or under my supervision, and that the same is true and correct to the best of my knowledge.

MARCH 7, 1988

Date Surveyed

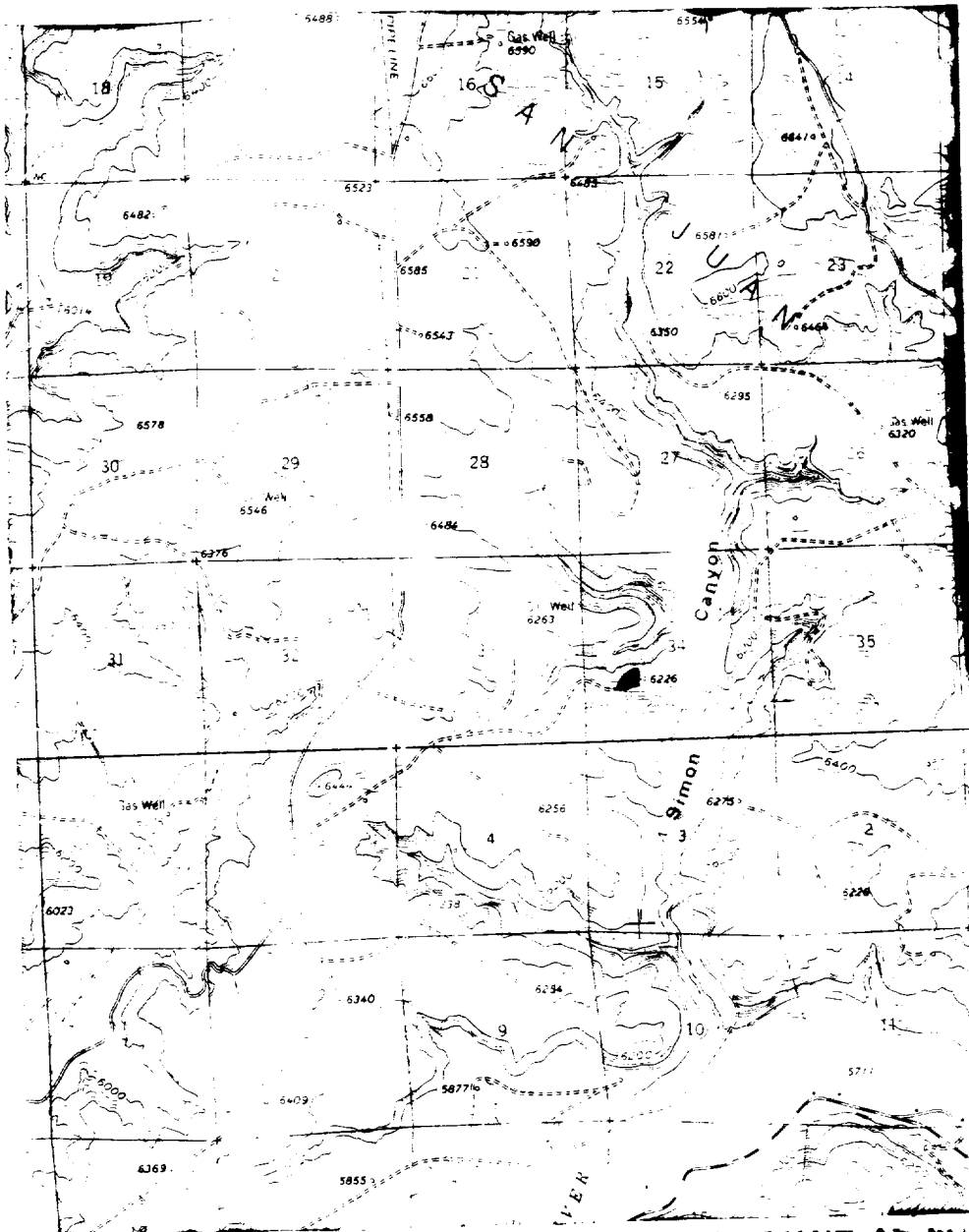
ISAAC L. WEAVER

Registered Professional Engineer
and/or Land Surveyor

Certificate No.

8966

SW 34-31-8



Map #2

LEGEND OF RIGHT-OF-WAYS

EXISTING ROADS

EXISTING PIPELINES

EXISTING ROAD & PIPELINE

PROPOSED ROADS

PROPOSED PIPELINES

PROPOSED ROAD & PIPELINE