

UNITED STATES  
DEPARTMENT OF THE INTERIOR  
BUREAU OF LAND MANAGEMENT

APPLICATION FOR PERMIT TO DRILL, DEEPEN, OR PLUG BACK

1a. TYPE OF WORK

DRILL ☒

DEEPEN ☐

PLUG BACK ☒

b. TYPE OF WELL

OIL  
WELL ☐

GAS  
WELL ☒

OTHER

SINGLE  
ZONE ☒

MULTIPLE  
ZONE ☐

2. NAME OF OPERATOR

Union Texas Petroleum Corp.

3. ADDRESS OF OPERATOR

P.O. Box 2120 Houston, TX 77252-2120

4. LOCATION OF WELL (Report location clearly and in accordance with any State requirements.)\*  
At surface

1955' FNL & 1285' FEL  
At proposed prod. zone

14. DISTANCE IN MILES AND DIRECTION FROM NEAREST TOWN OR POST OFFICE\*

17 miles East Cedar Hill, NM

15. DISTANCE FROM PROPOSED\*  
LOCATION TO NEAREST  
PROPERTY OR LEASE LINE, FT.  
(Also to nearest drig. unit line, if any)

1285

18. DISTANCE FROM PROPOSED LOCATION\*  
TO NEAREST WELL, DRILLING, COMPLETED,  
OR APPLIED FOR, ON THIS LEASE, FT.

3300

16. NO. OF ACRES IN LEASE

2049.17  
2365.58

19. PROPOSED DEPTH

3550

17. NO. OF ACRES ASSIGNED  
TO THIS WELL

320  
318.90-E2

20. ROTARY OR CABLE TOOLS

Rotary

21. ELEVATIONS (Show whether DF, RT, GR, etc.)

6603 GR

This action is subject to technical and

procedural review pursuant to 43 CFR 3185.3

and appeal pursuant to 43 CFR 3185.3 AND CEMENTING PROGRAM

22. APPROX. DATE WORK WILL START\*

6-1-90

23.

SIZE OF HOLE	SIZE OF CASING	WEIGHT PER FOOT	SETTING DEPTH	QUANTITY OF CEMENT
12 1/4	9 5/8	36	350	210
8 3/4	7	23	3550	369 284

We propose to drill 3550' into the Fruitland Coal Formation  
according to the 8 pt. drilling plan.

"Approval of this action does  
not warrant that the applicant  
holds legal or equitable rights  
or title to this lease."

RECEIVED

MAR 20 1990

OIL CON. DIV.  
DIST. 3

IN ABOVE SPACE DESCRIBE PROPOSED PROGRAM: If proposal is to deepen or plug back, give data on present productive zone and proposed new productive zone. If proposal is to drill or deepen directionally, give pertinent data on subsurface locations and measured and true vertical depths. Give blowout preventer program, if any.

24.

SIGNED

*[Signature]*

TITLE

Regulatory Permit Coord.

DATE

2/28/90

(This space for Federal or State office use)

PERMIT NO.

APPROVAL DATE

APPROVED  
AS AMENDED

APPROVED BY

CONDITIONS OF APPROVAL, IF ANY:

TITLE

*[Signature]*

MAR 19 1990

AREA MANAGER

0 1 2 3 4 5 6 7 8 9

Oct. 6 5 29 AM

[VIG MOD JIO  
 DIST 3

each multi-  
function,  
adaptive.

State of New Mexico  
Energy, Minerals and Natural Resources Department

OIL CONSERVATION DIVISION

P.O. Box 2088  
Santa Fe, New Mexico 87504-2088

Form C-102  
Revised 1-1-89  
RECEIVED  
MAIL ROOM

90 MAR -2 AM 11:37

RESOURCE AREA  
FARMINGTON, NEW MEXICO

WELL LOCATION AND ACREAGE DEDICATION PLAT

All Distances must be from the outer boundaries of the section

Operator <b>UNION TEXAS PETROELUM</b>			Lease <b>OXNARD 8</b>		Well No. <b>8-2</b>
Unit Letter <b>H</b>	Section <b>8</b>	Township <b>31N</b>	Range <b>8W</b>	County <b>San Juan</b>	
Actual Footage Location of Well: <b>1955</b> feet from the <b>NORTH</b> line and <b>1285</b> feet from the <b>EAST</b> line					
Ground level Elev. <b>6603</b>	Producing Formation <b>Fruitland Coal</b>		Pool <b>Basin</b>	Dedicated Acreage <b>39.81</b> Acres	

1. Outline the acreage dedicated to the subject well by colored pencil or hatchure marks on the plat below.

2. If more than one lease is dedicated to the well, outline each and identify the ownership thereof (both as to working interest and royalty).

3. If more than one lease of different ownership is dedicated to the well, have the interest of all owners been consolidated by communitization, unitization, force-pooling, etc.?

☐ Yes ☒ No If answer is "yes" type of consolidation

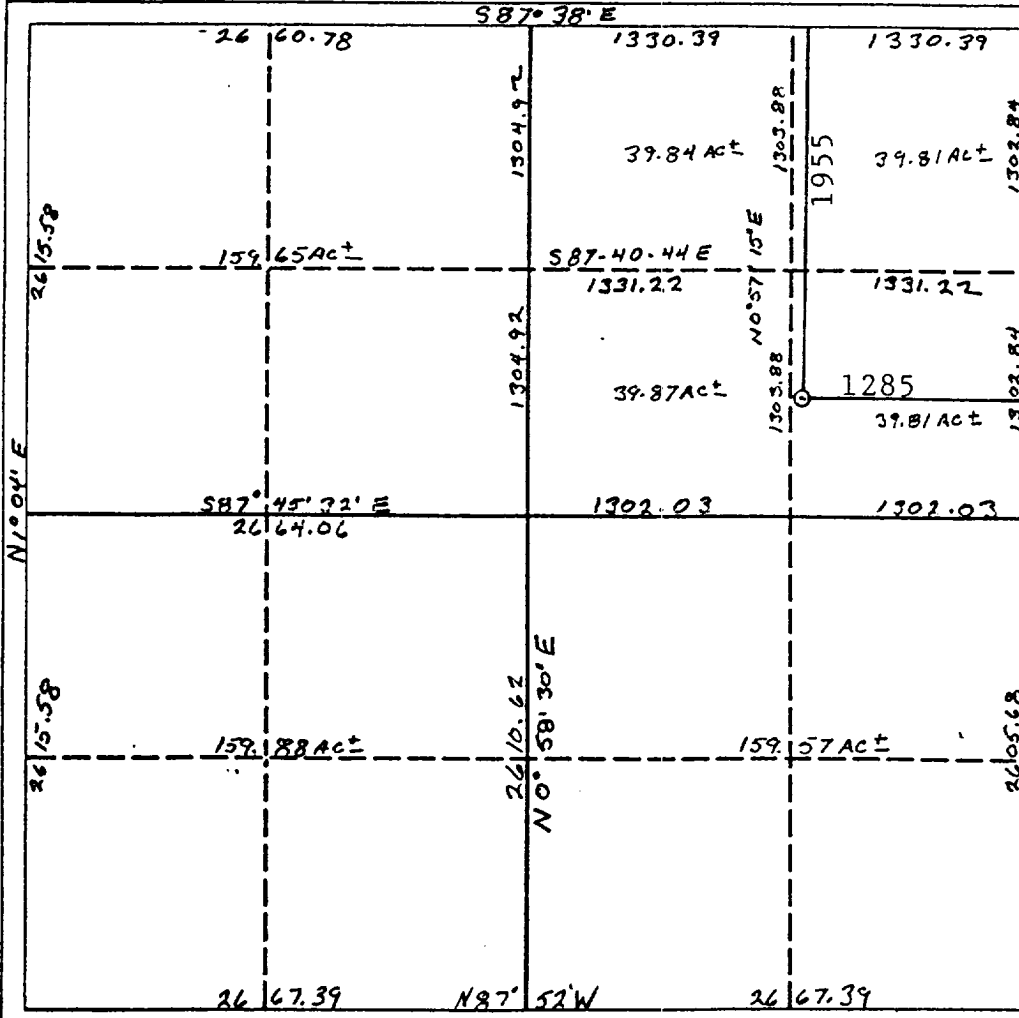
If answer is "no" list the owners and tract descriptions which have actually been consolidated. (Use reverse side of this form if necessary.)

No allowable will be assigned to the well until all interests have been consolidated (by communitization, unitization, forced-pooling, or otherwise) or until a non-standard unit, eliminating such interest, has been approved by the Division.

MAR 20 1990

OIL CON. DIV.

Dist. 3



<b>OPERATOR CERTIFICATION</b>	
I hereby certify that the information contained herein is true and complete to the best of my knowledge and belief.	
Signature <i>Ken E. White</i>	Printed Name <b>Ken E. White</b>
Position <b>Regulatory Permit Coord.</b>	
Company <b>Union Texas Petroleum Corp.</b>	
Date <b>2/28/90</b>	
<b>SURVEYOR CERTIFICATION</b>	
I hereby certify that the well location shown on this plat was plotted from field notes of actual surveys made by me or under my supervision, and that the same is true and correct to the best of my knowledge and belief.	
Date Surveyed <b>November 7, 1989</b>	
Signature of Professional Surveyor <i>[Signature]</i>	
Professional Surveyor <b>9672</b>	
Certificate No. <b>9672</b>	

UNITED STATES  
DEPARTMENT OF THE INTERIOR  
BUREAU OF LAND MANAGEMENT

SUNDRY NOTICES AND REPORTS ON WELLS

RECEIVED  
FARMINGTON, NEW MEXICO  
AUG 3 1990

1. TYPE OF WELL GAS		5. LEASE NUMBER SF-078510	
2. OPERATOR MERIDIAN OIL INC.		6. IF INDIAN, ALL. OR TRIBE NAME	
3. ADDRESS & PHONE NO. OF OPERATOR P O BOX 4289 FARMINGTON, NM 87499		7. UNIT AGREEMENT NAME	
4. LOCATION OF WELL 1955'FNL 1285'FEL		8. FARM OR LEASE NAME OXNARD	
		9. WELL NO. 333	
		10. FIELD, POOL, OR WILDCAT BASIN FRUITLAND COAL	
		11. SEC. T. R. M OR BLK. SEC. 8 T31N R08W NMPM	
14. PERMIT NO.	15. ELEVATIONS 6603'GL	12. COUNTY SAN JUAN	13. STATE NM
16. SUBSEQUENT REPORT OF: Amended Application for Permit to Drill <i>Operator &amp; Name Change</i>			
17. Describe proposed or completed operations			

From:  
Reference is made to Union Texas Petroleum's Application for Permit to Drill the Oxnard 8 #2 approved 03-19-90.

Meridian Oil Inc. will operate and drill this well as the Oxnard #333 at 1955'FNL and 1285'FEL of Section 8 of Township T31N and Range R08W.

Submitted for review:

- C102
- Operations Plan
- BOP Diagrams
- Location Laydown
- Cut and Fill Diagram
- Facilities Diagram

**RECEIVED**  
AUG 3 1990  
OIL CON. DIV.  
DIST. 3

18. AUTHORIZED BY: *[Signature]*  
REGULATORY AFFAIRS

NOTE: THIS FORMAT IS ISSUED IN LIEU OF US BLM FORM 3160-5.

=====

(This space for Federal or State office use)

APPROVED BY \_\_\_\_\_  
CONDITION OF APPROVAL, IF ANY:

TITLE \_\_\_\_\_

NMOCQ

6-25-90

DATE

**APPROVED**

JUL 25 1990

DATE

*[Signature]*

AREA MANAGER

FARMINGTON RESOURCE

Submit to Appropriate  
District Office  
State Lease - 4 copies  
Fee Lease - 3 copies

State of New Mexico  
Energy, Minerals and Natural Resources Department

Form C-102  
Revised 1-1-89

OIL CONSERVATION DIVISION

P.O. Box 2088  
Santa Fe, New Mexico 87504-2088

DISTRICT I  
P.O. Box 1980, Hobbs, NM 88240

DISTRICT II  
P.O. Drawer DD, Artesia, NM 88210

DISTRICT III  
1000 Rio Brazos Rd., Aztec, NM 87410

WELL LOCATION AND ACREAGE DEDICATION PLAT

All Distances must be from the outer boundaries of the section

Operator Meridian Oil Inc.		Lease Oxnard (SF-078510)		Well No. 333
Unit Letter H	Section 8	Township 31 North	Range 8 West	County San Juan
Actual Footage Location of Well: 1955 feet from the North line and 1285 feet from the East line				
Ground level Elev. 6603'	Producing Formation Fruitland Coal	Pool Basin	Dedicated Acreage: <del>218.90</del> 320 Acres	

1. Outline the acreage dedicated to the subject well by colored pencil or hectare marks on the plat below.

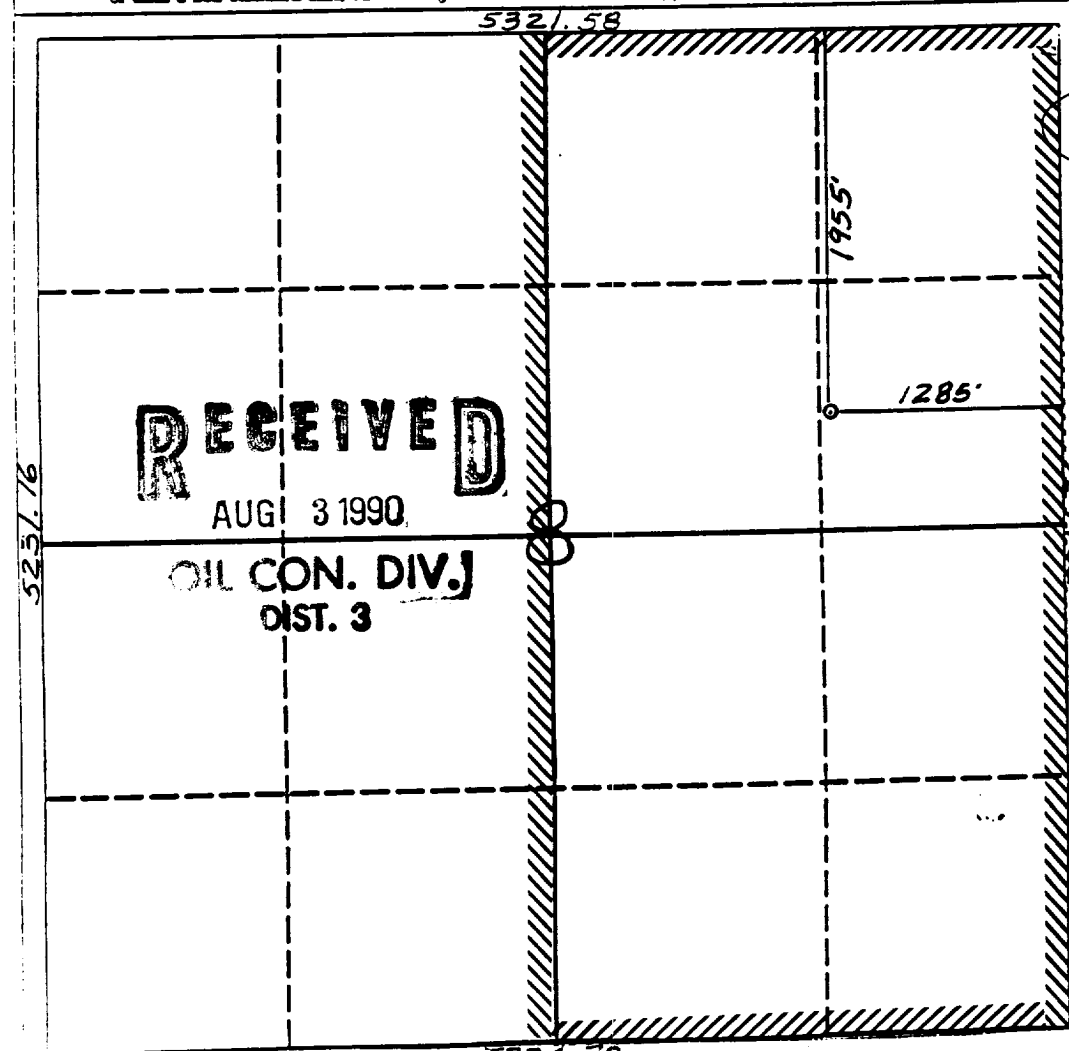
2. If more than one lease is dedicated to the well, outline each and identify the ownership thereof (both as to working interest and royalty).

3. If more than one lease of different ownership is dedicated to the well, have the interest of all owners been consolidated by communitization, unitization, force-pooling, etc.?

☐ Yes ☐ No If answer is "yes" type of consolidation

If answer is "no" list the owners and tract descriptions which have actually been consolidated. (Use reverse side of this form if necessary.)

No allowable will be assigned to the well until all interests have been consolidated (by communitization, unitization, force-pooling, or otherwise) or until a non-standard unit, eliminating such interest, has been approved by the Division.



OPERATOR CERTIFICATION

I hereby certify that the information contained herein is true and complete to the best of my knowledge and belief.

Signature

Peggy Bradfield

Printed Name

Regulatory Affairs

Position

Meridian Oil Inc.

Company

6-25-90

Date

SURVEYOR CERTIFICATION

I hereby certify that the well location is on this plat was plotted from field notes, actual surveys made by me or under supervision, and that the same is true correct to the best of my knowledge and belief.

6-20-90

Date Surveyed

Signature  
Professional Surveyor



Certificate No.

Neale C. Edwards

Well Name: 333 OXNARD 1955'FNL 1285'FEL  
 Sec. 8 T31N R08W SAN JUAN NEW MEXICO  
 BASIN FRUITLAND COAL Elevation 6603'GL

Formation tops: Surface- SAN JOSE  
 Ojo Alamo- 2235  
 Kirtland- 2287  
 Fruitland- 3165  
 Fruitland Coal Top- 3175 Intermediate TD- 3155  
 Fruitland Coal Base- 3512 Total Depth- 3513  
 Pictured Cliffs- 3519

Logging Program: Mud logs from intermediate to total depth.

Mud Program:	Interval	Type	Weight	Visc.	Fl. Loss
	0 - 350	Spud	8.4 - 8.9	40-50	no control
	350 - 3155	Non-dispersed	8.4 - 9.1	30-60	no control
	3155 - 3513	Formation Water	8.4		no control

Casing Program:	Hole Size	Depth Interval	Csg. Size	Weight	Grade
	12 1/4"	0 - 350	9 5/8"	32.3#	H-40
	8 3/4"	0 - 3155	7"	20.0#	K-55
	6 1/4"	3105 - 3513	5 1/2"	15.5#	K-55
Tubing Program:		0 - 3513	2 7/8"	6.5#	J-55

Float Equipment: 9 5/8" surface casing - saw tooth guide shoe. Centralizers will be run in accordance with Onshore Order #2.

7" intermediate casing - guide shoe and self-fill insert float valve. Three centralizers run every other joint above shoe. Run insert float one joint above the guide shoe. Two turbolizing type centralizers - one below and one into the base of the Ojo Alamo @ 2287'. Standard centralizers thereafter every fourth joint up to the base of the surface pipe.

5 1/2" production casing - float shoe on bottom and a pre-drilled liner run to the 7" casing with a minimum 50' overlap. Liner hanger is a double slip grip type.

Wellhead Equipment: 9 5/8" x 7" x 2 7/8" x 11" 3000 psi xmas tree assembly.

#### Cementing:

9 5/8" surface casing - cement with 279 sacks of class "B" cement with 1/4# flocele/sack and 3% calcium chloride (329 cu ft. of slurry, 200% excess to circulate to surface). WOC 12 hours. Test casing to 600 psi for 30 minutes.

7" intermediate casing - lead with 464 sacks of 65/35 class "B" poz with 6% gel, 2% calcium chloride and 1/2 cu ft. Perlite/sack (10.3 gallons of water/sack) tail with 100 sacks of class "B" with 2% calcium chloride. 1014 cu ft. of slurry, 110% excess to circulate to surface. If hole conditions permit, a 600 ft spacer will be run ahead of the cement slurry to avoid mud contamination of the cement. WOC 12 hours. If cement does not circulate to surface, a temperature log will be run after 8 hours to determine TOC.

5 1/2" liner - do not cement.

## BOP and Tests:

Surface to intermediate TD - 11" 2000 psi(minimum) double gate BOP stack (Reference Figure #1). Prior to drilling out surface casing, test rams to 600 psi for 30 minutes.

Intermediate TD to TD - 7 1/16" 2000 psi(minimum) double gate BOP stack (Reference Figure #2). Prior to drilling out intermediate casing, test blind rams and casing to 2500 psi for 30 minutes; all pipe rams and casing to 2500 psi for 30 minutes each.

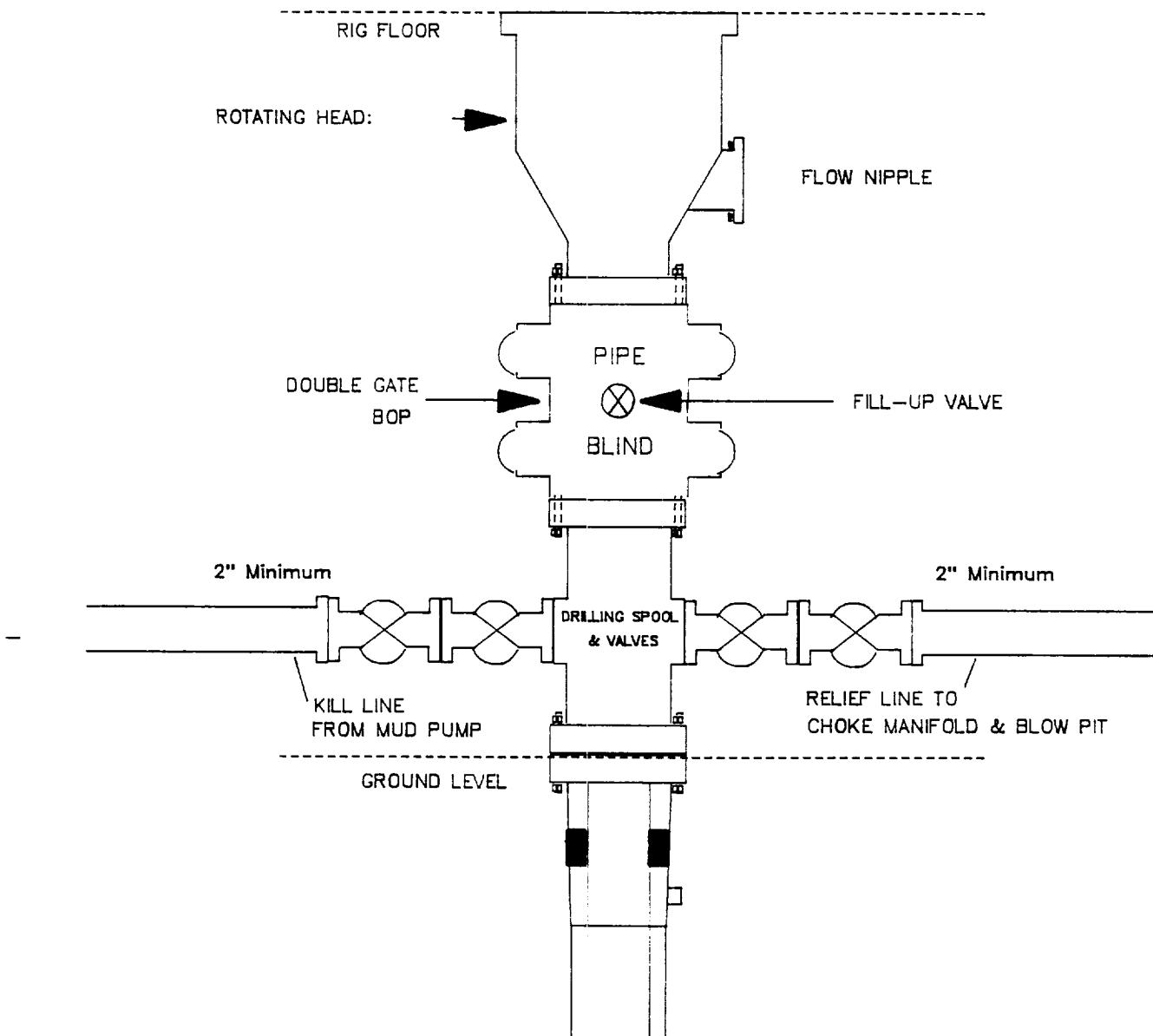
From surface to TD - choke manifold (Reference Figure #3).

Pipe rams will be actuated at least once each day and blind rams actuated once each trip to test proper functioning. An upper kelly cock valve with handle and drill string safety valves to fit each drill string will be maintained and available on the rig floor.

## Additional Information:

- \* The Fruitland coal formation will be completed.
- \* Anticipated Fruitland pore pressure is 1650 psi.
- \* This gas is dedicated.
- \* The E/2 of Section 8 is dedicated to this well.
- \* New casing will be utilized.
- \* Cementing Contractor will provide the BLM with a chronological log including the pump rate and pressure, and the slurry density and volume for all cement jobs.
- \* Pipe movement (either rotation or reciprocation) will be done if hole conditions permit.

**MERIDIAN OIL INC.**  
Drilling Rig  
BOP Configuration

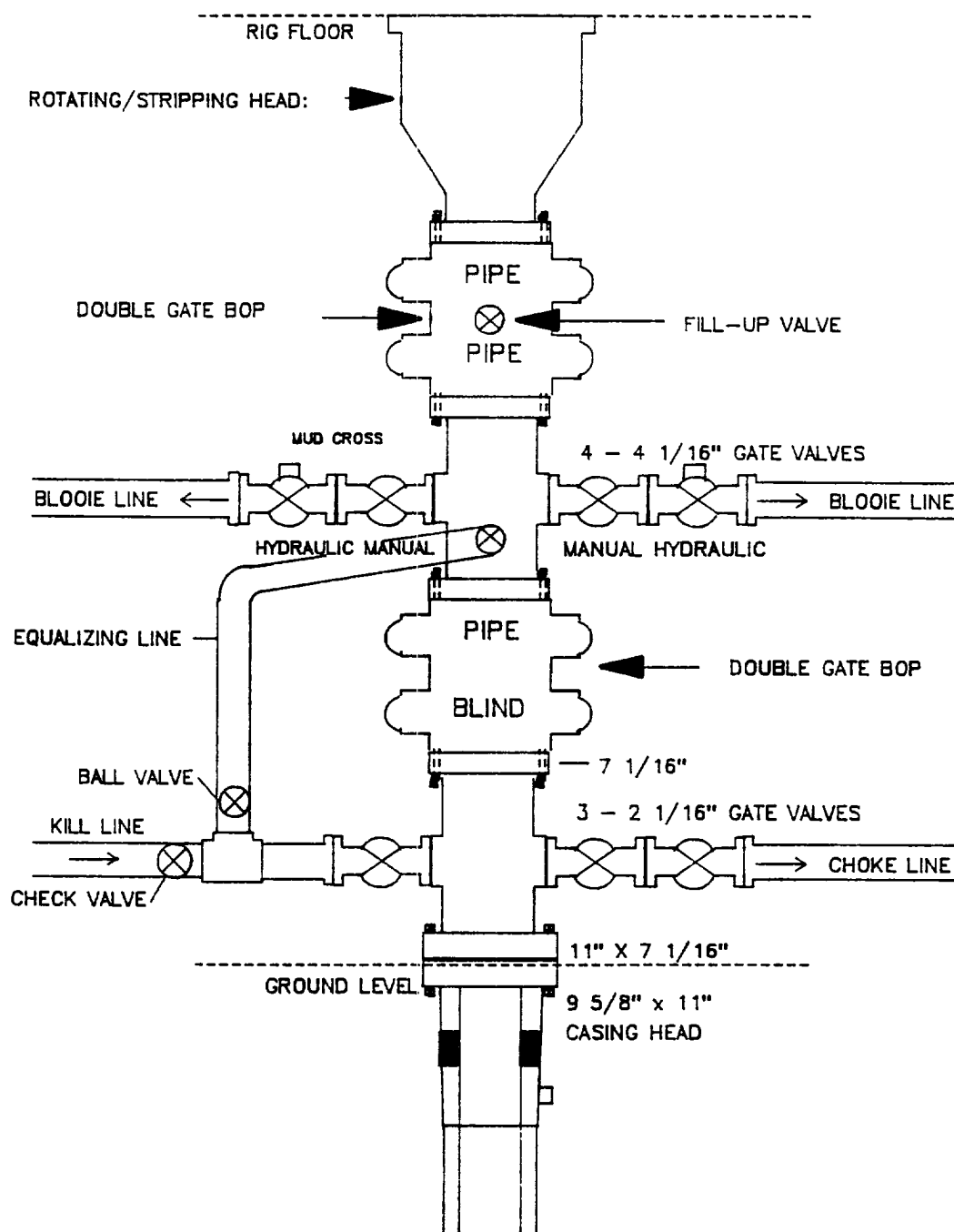


Minimum BOP installation for a typical Fruitland Coal well from surface to Intermediate casing point. 11" Bore (10" Nominal), 2000psi minimum working pressure double gate BOP to be equipped with blind and pipe rams. A Schaffer Type 50 equivalent rotating head to be installed on the top of BOP. All equipment is 2000psi working pressure/or greater.

**Figure #1**



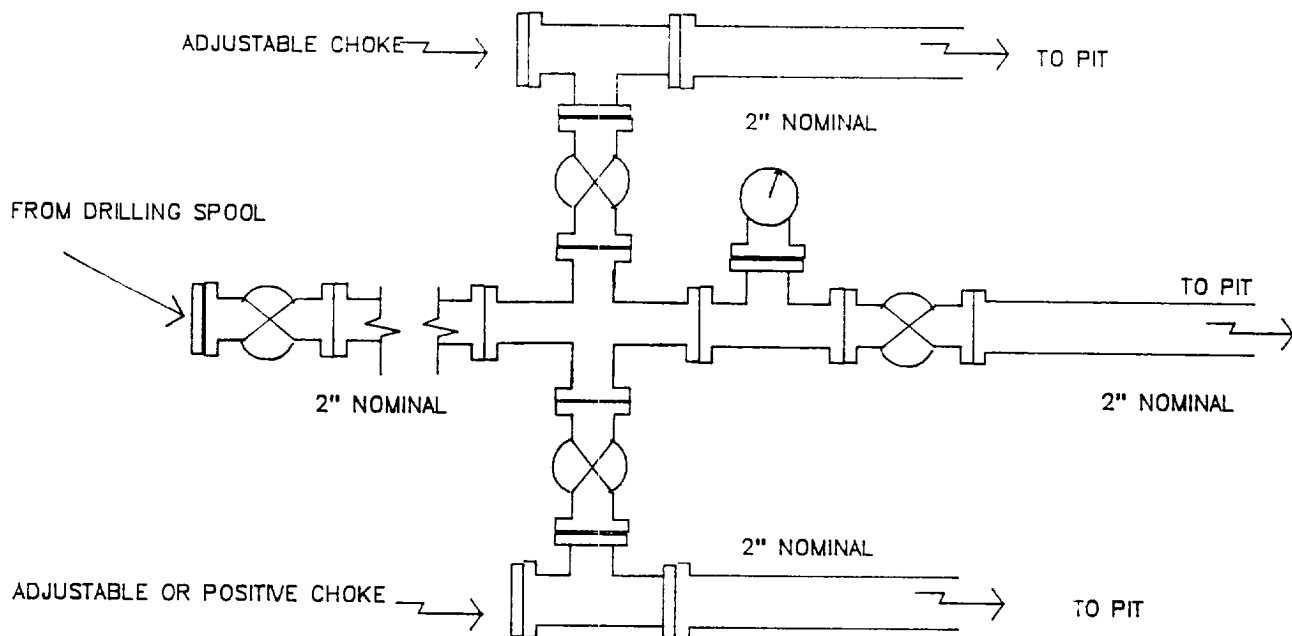
# **MERIDIAN OIL INC.** Completion Rig BOP Configuration



Minimum BOP installation for a typical open-hole Fruitland Coal well from intermediate TD to TD. 7 1/16" Bore (6" Nominal), 2000psi working pressure/ or greater double stack double gate BOP equipped with three pipe and one blind ram.

**Figure #2**

**MERIDIAN OIL INC.**  
Typical Fruitland Coal Well  
Choke Manifold Configuration



Minimum choke manifold installation for a typical Fruitland Coal well from surface to Total Depth. 2", 2000psi working pressure equipment with two chokes.

**Figure #3**

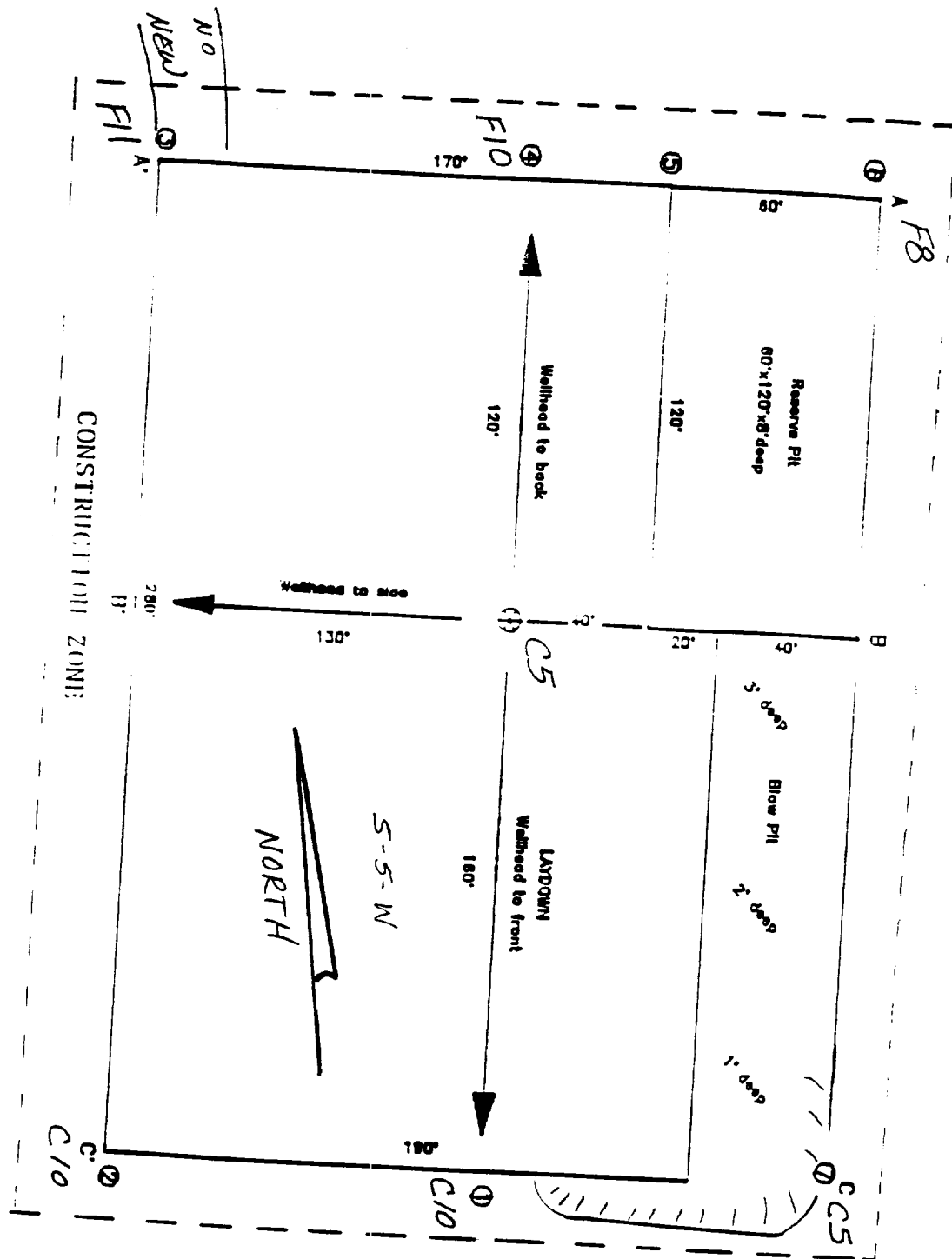


EXHIBIT: \_\_\_\_\_

Name: MOI OXNARD #333

Footage: 1955' FNL 1285' FEL

Sec 8 T- 31 -N, R- 8 -W NMPM

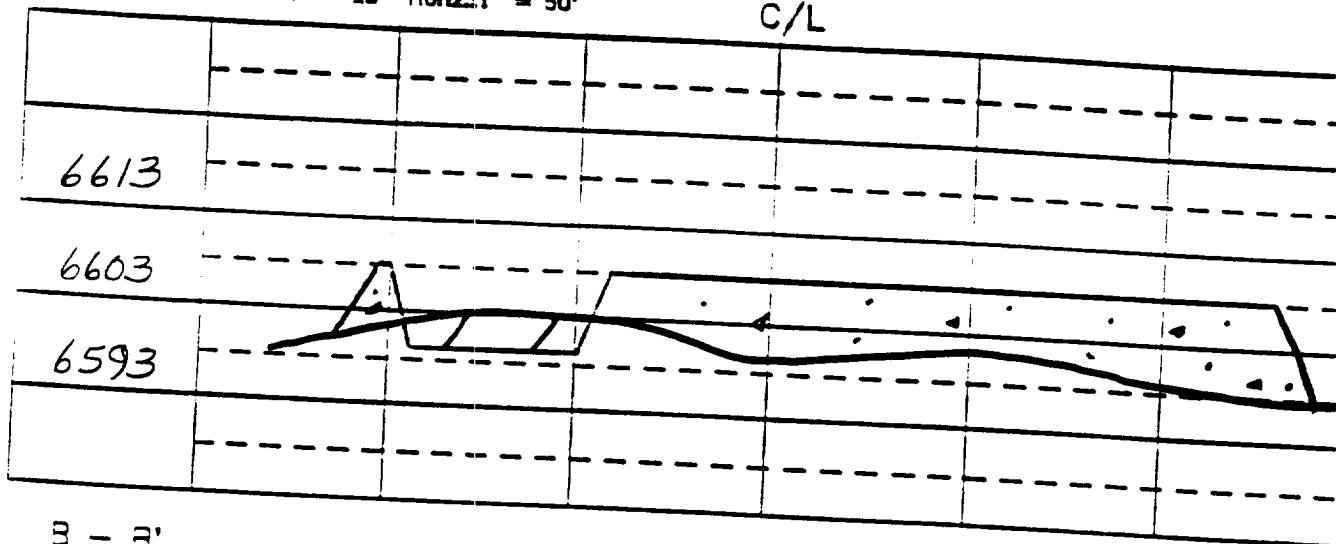
Co. SAN JUAN St. NM

Elevation: 6603' Date: 6-20-90

Plat 2  
2/3/90

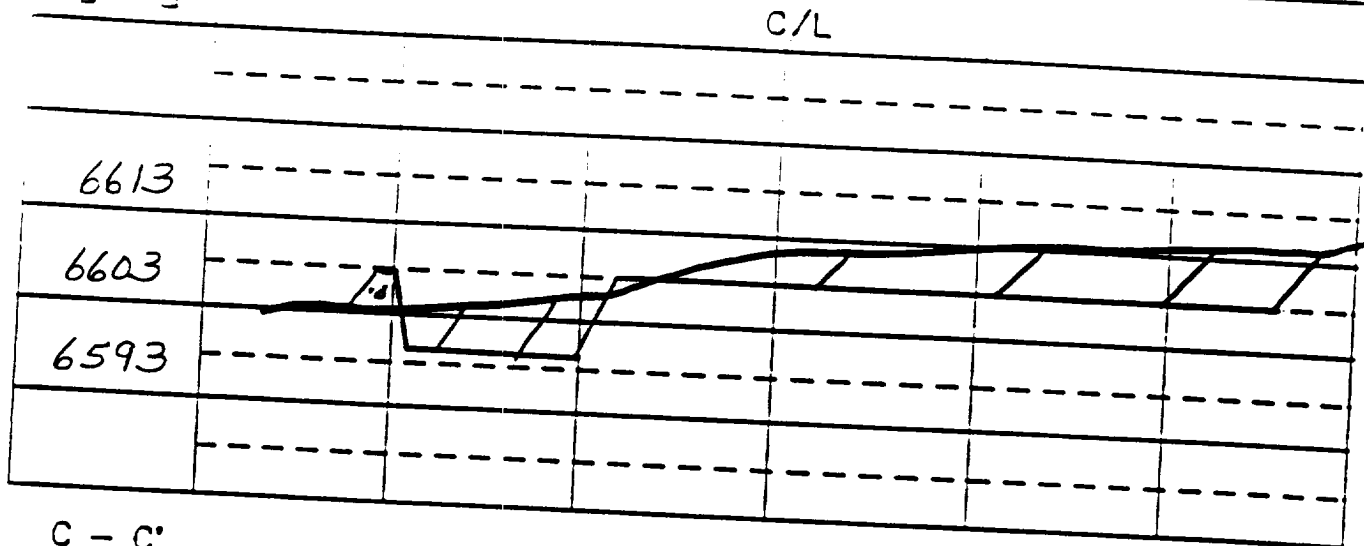
A - A' Vert.: 1" = 20' Horiz.: 1" = 50'

C/L



B - B'

C/L



C - C'

C/L

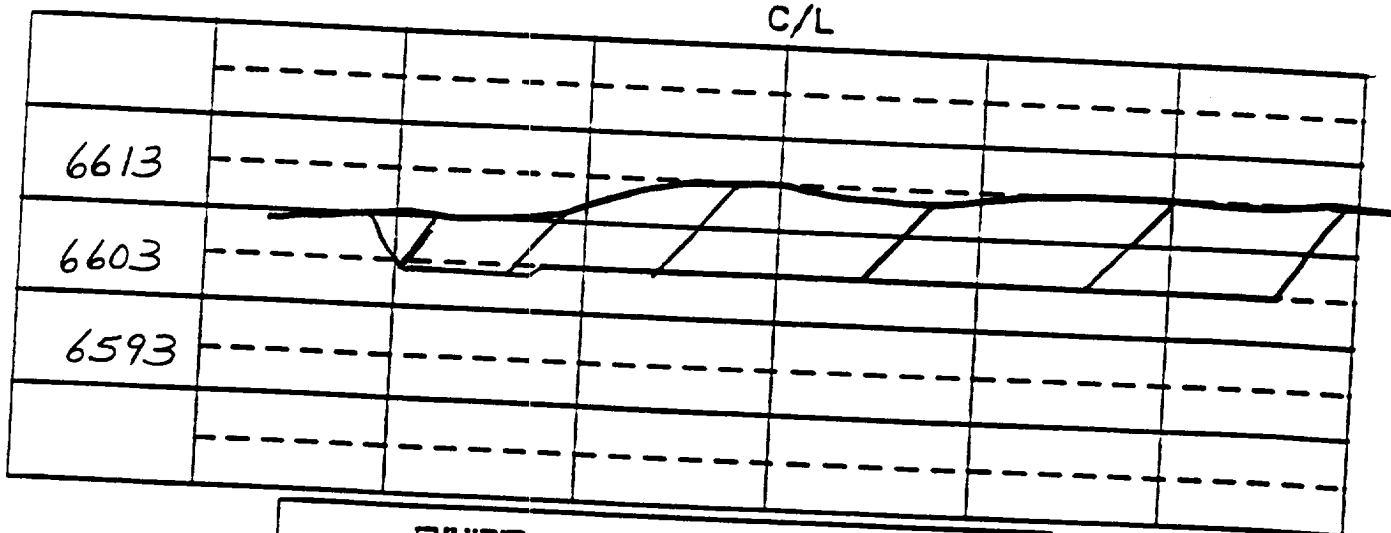
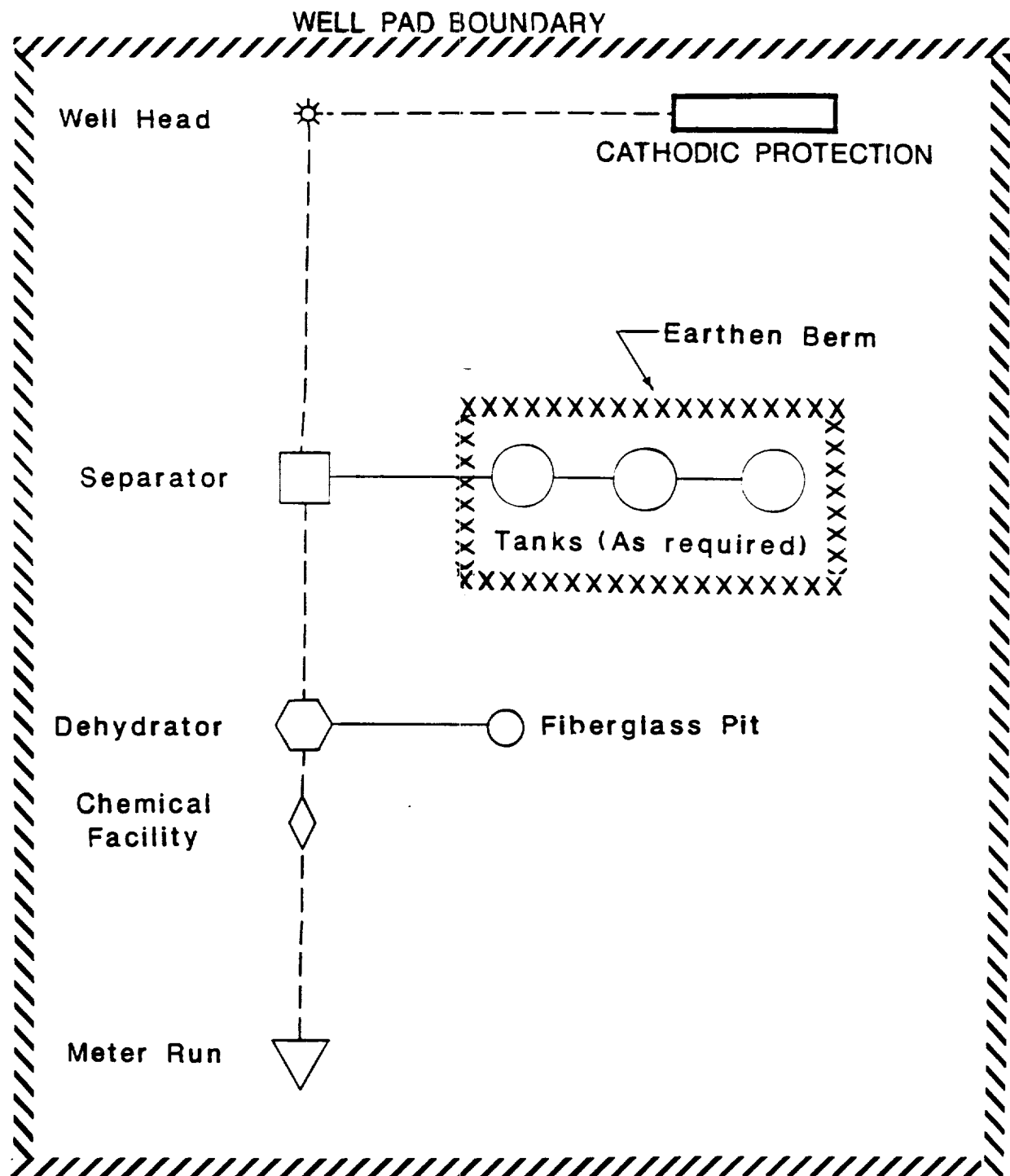


EXHIBIT:

Name: MOI OXNARD #333  
 Footage: 1955' FNL 1285' FEL  
 Sec 8 T- 31 -N.R- 8 -W NMPM  
 Co. SAN JUAN St. NM  
 Elevation: 6603' Date: 6-20-90

Plot XC  
2/4/90



**PLAT #1**

**MERIDIAN OIL**  
 ANTICIPATED  
 PRODUCTION FACILITIES  
 FOR A  
 FRUITLAND WELL