

UNITED STATES
DEPARTMENT OF THE INTERIOR
GEOLOGICAL SURVEY

30-045-27659

5. LEASE DESIGNATION AND SERIAL NO.
SF078970

6. IF INDIAN, ALLOTTEE OR TRIBE NAME

7. UNIT AGREEMENT NAME
Northeast Blanco

8. FARM OR LEASE NAME
Northeast Blanco Unit

9. WELL NO.
438

10. FIELD AND POOL, OR WILDCAT
Basin Fruitland Coal

11. SEC., T., R., M., OR BLK.
AND SURVEY OR AREA
A
Sec. 18, T31N, R6W

12. COUNTY OR PARISH
San Juan

13. STATE
NM

APPLICATION FOR PERMIT TO DRILL, DEEPEN, OR PLUG BACK

1a. TYPE OF WORK
DRILL ☒ DEEPEN ☐ PLUG BACK ☐

b. TYPE OF WELL
OIL WELL ☐ GAS WELL ☒ OTHER ☐ SINGLE ZONE ☒ MULTIPLE ZONE ☐

2. NAME OF OPERATOR
Blackwood & Nichols CO., Ltd.

3. ADDRESS OF OPERATOR
P.O. Box 1237, Durango, CO 81302-1237

4. LOCATION OF WELL (Report location clearly and in accordance with any State requirements.)
At surface
1210' FNL - 1245' FEL
At proposed prod. zone
Same

14. DISTANCE IN MILES AND DIRECTION FROM NEAREST TOWN OR POST OFFICE*
22 miles NE of Blanco, New Mexico

15. DISTANCE FROM PROPOSED*
LOCATION TO NEAREST
PROPERTY OR LEASE LINE, FT.
(Also to nearest drilg. unit line, if any)
1210'

16. NO. OF ACRES IN LEASE
320

17. NO. OF ACRES ASSIGNED
TO THIS WELL
E/ 320

18. DISTANCE FROM PROPOSED LOCATION*
TO NEAREST WELL, DRILLING, COMPLETED,
OR APPLIED FOR, ON THIS LEASE, FT.
NA

19. PROPOSED DEPTH
3360'

20. ROTARY OR CABLE TOOLS
Rotary

21. ELEVATIONS (Show whether DF, RT, GR, etc.)
6427' GL This action is subject to technical and
procedural review pursuant to 43 CFR 3165.3
and appeal pursuant to 43 CFR 3169.4

22. APPROX. DATE WORK WILL START*
April 1, 1990

PROPOSED CASING AND CEMENTING PROGRAM				DRILLING OPERATIONS AUTHORIZED ARE	
SIZE OF HOLE	SIZE OF CASING	WEIGHT PER FOOT	SETTING DEPTH	SUBJECT TO QUANTITY OF CEMENT	QUANTITY OF CEMENT
12 1/4"	9 5/8"	36#	300'	295 cu ft/circulate to surface	295 cu ft/circulate to surface
8 3/4"	7"	23#	3050'	940 cu ft/circulate to surface	940 cu ft/circulate to surface
6 1/4"	5 1/2"	17#	2950'-3360'	39 cu ft/circulate to liner top	39 cu ft/circulate to liner top

Propose to spud in the San Jose formation. Will drill a 12 1/4" hole to a TD of 300'. Run surface casing and cement with cement returns to surface. WOC 12 hours. Test to 600 psi/30 mins. Drill a 8 3/4" hole to a TD of 3050' using fresh water mud. No poisonous gases or abnormal pressures are anticipated. Run intermediate casing and cement with cement returns to surface. WOC 12 hours. Test to 1500 psi/30 mins. Drill a 6 1/4" hole to a TD of 3360' using water and air. Run a mud logging unit while drilling this interval. Run the production liner. The liner will be cemented if the wells natural flow capacity indicates the need for fracture stimulation.

RECEIVED
MAR 6 1990

Surface is Bureau of Land Management

OIL CON. DIV.

IN ABOVE SPACE DESCRIBE PROPOSED PROGRAM: If proposal is to deepen or plug back, give data on present productive zone and proposed new productive zone. If proposal is to drill or deepen directionally, give pertinent data on subsurface locations and measured and true vertical depths. Give blowout preventer program, if any.

24. SIGNED William F. Clark TITLE Operations Manager DATE 8 Feb '90

(This space for Federal or State office use)

PERMIT NO. _____ APPROVAL DATE _____

APPROVED BY _____ TITLE _____ DATE _____

CONDITIONS OF APPROVAL, IF ANY:

AR
C

CB

*See Instructions On Reverse Side

APPROVED
AS AMENDED
MAR 12 1990
AREA MANAGER

NO. 100 10
100

NEW MEXICO OIL CONSERVATION COMMISSION
WELL LOCATION AND ACREAGE DEDICATION PLAT

Form C-102
Supersedes C-128
Effective 1-1-55

All distances must be from the outer boundaries of the Section.

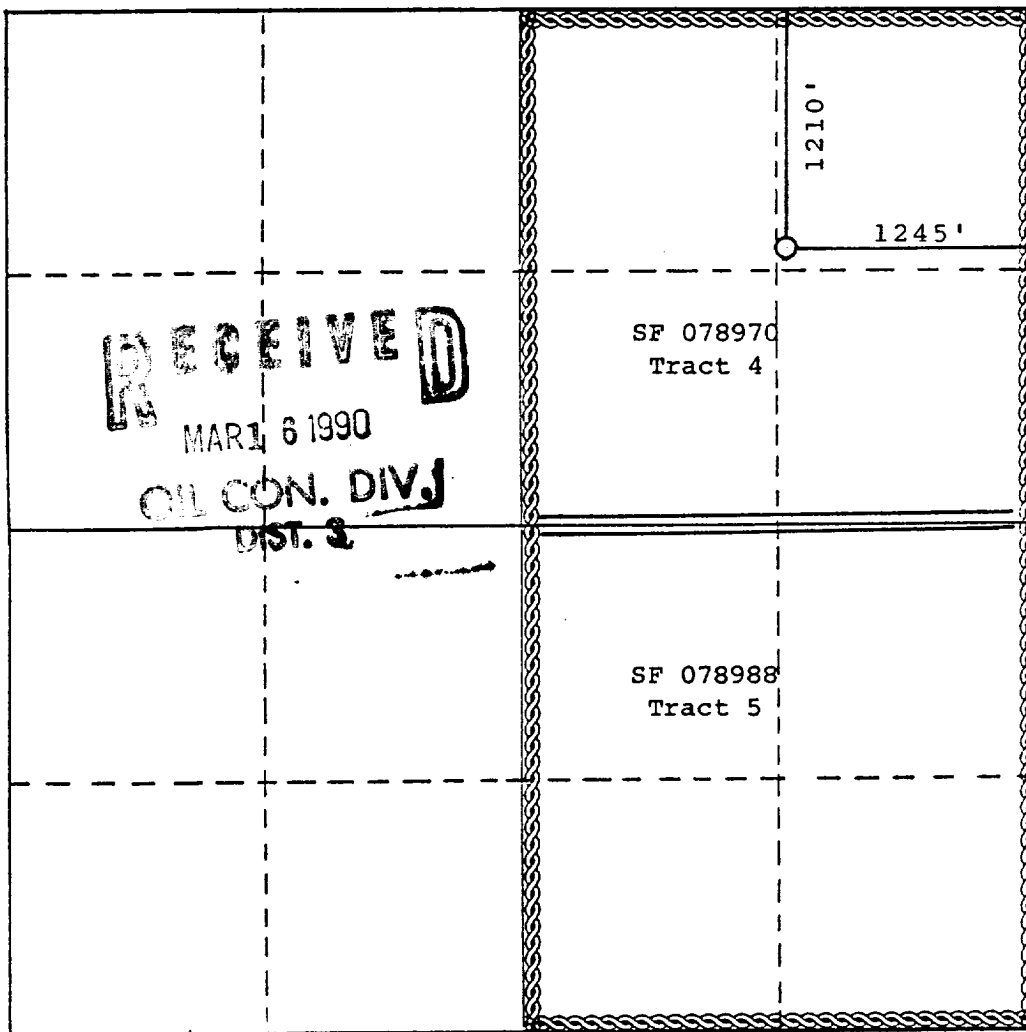
Operator BLACKWOOD & NICHOLS CO., LTD.		Lease NORTHEAST BLANCO UNIT		Well No. 438
Unit Letter A	Section 18	Township 31 North	Range 6 West	County San Juan County
Actual Footage Location of Well: 1210 feet from the north line and 1245 feet from the east line				
Ground Level Elev: 6427 (U.G.)	Producing Formation Fruitland Coal	Pool Basin Fruitland Coal	Dedicated Acreage: 320 Acres	

1. Outline the acreage dedicated to the subject well by colored pencil or hachure marks on the plat below.
2. If more than one lease is dedicated to the well, outline each and identify the ownership thereof (both as to working interest and royalty).
3. If more than one lease of different ownership is dedicated to the well, have the interests of all owners been consolidated by communitization, unitization, force-pooling, etc?

☒ Yes ☐ No If answer is "yes," type of consolidation Unitization

If answer is "no," list the owners and tract descriptions which have actually been consolidated. (Use reverse side of this form if necessary.)

No allowable will be assigned to the well until all interests have been consolidated (by communitization, unitization, forced-pooling, or otherwise) or until a non-standard unit, eliminating such interests, has been approved by the Commission.



CERTIFICATION

I hereby certify that the information contained herein is true and complete to the best of my knowledge and belief.

William F. Clark

Name
William F. Clark

Position
Operations Manager

Company
Blackwood & Nichols Co.

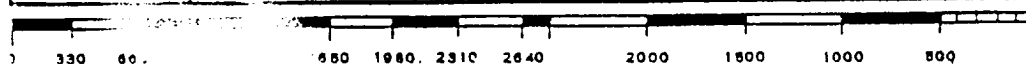
Date
December 7, 1989

I hereby certify that the well location shown on this plat was plotted from field notes of actual surveys made by me or under my supervision, and that the same is true and correct to the best of my knowledge and belief.

Date Surveyed
November 16, 1989

Registered Professional Engineer and/or Land Surveyor
Allison L. Krueger
Allison L. Krueger, PLS

Certificate No.
7922



100

7

R 7 W

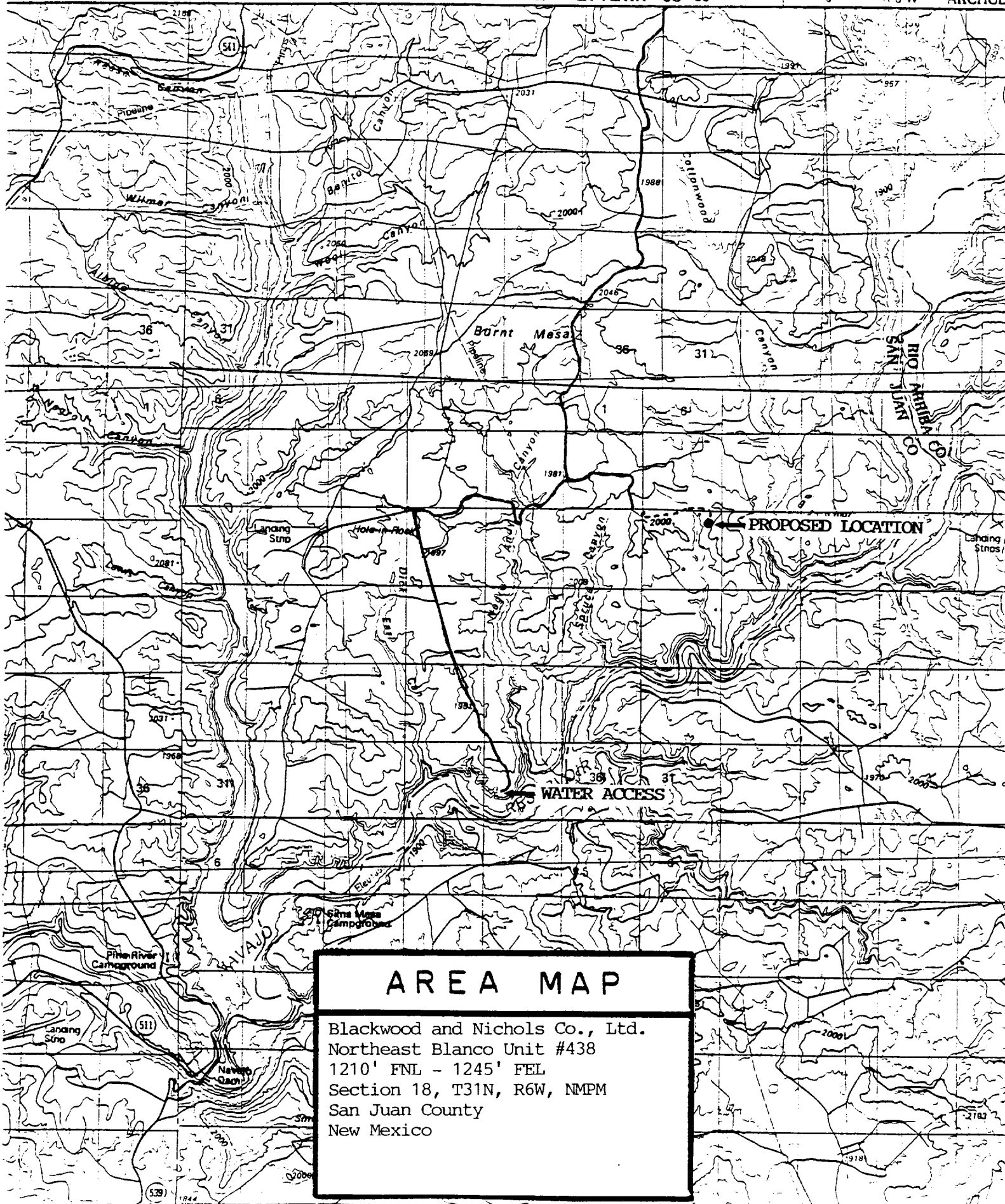
125

LA PLATA CO 30'

28

R 6 W

ARCHUL



AREA MAP

Blackwood and Nichols Co., Ltd.
Northeast Blanco Unit #438
1210' FNL - 1245' FEL
Section 18, T31N, R6W, NMPM
San Juan County
New Mexico