

UNITED STATES  
DEPARTMENT OF THE INTERIOR  
GEOLOGICAL SURVEY

30-045-27687

## APPLICATION FOR PERMIT TO DRILL, DEEPEN, OR PLUG BACK

## 1a. TYPE OF WORK

DRILL ☒DEEPEN ☐PLUG BACK ☐

## b. TYPE OF WELL

OIL  
WELL ☐GAS  
WELL ☒OTHER ☐SINGLE  
ZONE ☒MULTIPLE  
ZONE ☐

## 2. NAME OF OPERATOR

Blackwood and Nichols Co., Ltd.

## 3. ADDRESS OF OPERATOR

P.O. Box 1237, Durango, CO 81302-1237

## 4. LOCATION OF WELL (Report location clearly and in accordance with any State requirements.)\*

At surface

475' FNL - 425' FWL

At proposed prod. zone

Same

## 14. DISTANCE IN MILES AND DIRECTION FROM NEAREST TOWN OR POST OFFICE\*

22 miles NE of Blanco, New Mexico

## 15. DISTANCE FROM PROPOSED\*

LOCATION TO NEAREST  
PROPERTY OR LEASE LINE, FT.  
(Also to nearest drig. unit line, if any)

475'

## 16. NO. OF ACRES IN LEASE

2560

18. DISTANCE FROM PROPOSED LOCATION\*  
TO NEAREST WELL, DRILLING COMPLETED,  
OR APPLIED FOR, ON THIS LEASE, FT.

2500'

## 19. PROPOSED DEPTH

3340'

17. NO. OF ACRES ASSIGNED  
TO THIS WELL

W/320

## 20. ROTARY OR CABLE TOOLS

Rotary

## 21. ELEVATIONS (Show whether DF, RT, GR, etc.)

6364' GL

## 22. APPROX. DATE WORK WILL START

April 1, 1990

## 23. PROPOSED CASING AND CEMENTING PROGRAM

SIZE OF HOLE	SIZE OF CASING	WEIGHT PER FOOT	SETTING DEPTH	QUANTITY OF CEMENT
12 1/4"	9 5/8"	36#	300'	205 cuft/circulate to surface
8 3/4"	7"	23#	3020'	940 cuft/circulate to surface
6 1/4"	5 1/2"	17#	2920'-3340'	39 cuft/circulate to liner top

Propose to spud in the San Jose formation. Will drill a 12 1/4" hole to a TD of 300'. Run surface casing and cement with cement returns to surface. WOC 12 hours. Test to 600 psi/30 mins. Drill a 8 3/4" hole to a TD of 3020' using fresh water mud. No poisonous gases or abnormal pressures are anticipated. Run intermediate casing and cement with cement returns to surface. WOC 12 hours. Test to 1500 psi/30 mins. Drill a 6 1/4" hole to a TD of 3340' using water and air. Run a mud logging unit while drilling this interval. Run the production liner. The liner will be cemented if the wells natural flow capacity indicates the need for the fracture stimulation.

Surface is Bureau of Reclamation

RECEIVED

MAR 26 1990

IN ABOVE SPACE DESCRIBE PROPOSED PROGRAM: If proposal is to deepen or plug back, give data on present productive zone and proposed new product zone. If proposal is to drill or deepen directionally, give pertinent data on subsurface locations and proposed directional vertical depths. Give blow prevention program, if any.

24.

SIGNED

*William F. Hall*

TITLE

Operations Manager

DATE

8 Feb '90

(This space for Federal or State office use)

PERMIT NO.

APPROVAL DATE

APPROVED BY

TITLE

CONDITIONS OF APPROVAL, IF ANY:

NMOCD

APPROVED  
AS AMENDED

DATE

MAR 21 1990

AREA MANAGER

\*See Instructions On Reverse Side

**NEW MEXICO OIL CONSERVATION COMMISSION  
WELL LOCATION AND ACREAGE DEDICATION PLAT**

Form C-102  
Supersedes C-128  
Effective 1-1-65

All distances must be from the outer boundaries of the Section.

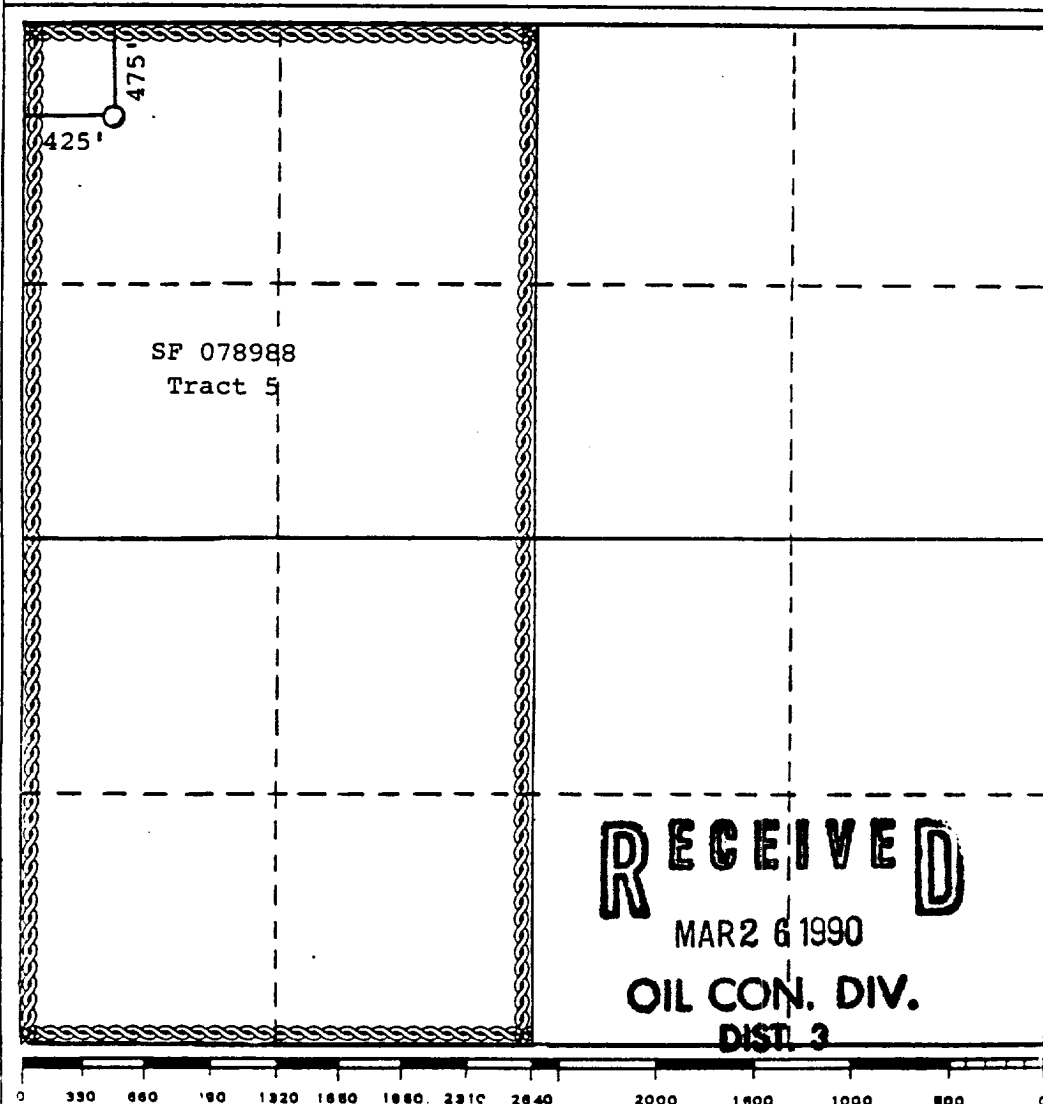
Operator <b>BLACKWOOD &amp; NICHOLS CO., LTD.</b>			Lease <b>NORTHEAST BLANCO UNIT</b>		Well No. <b>500</b>
Unit Letter <b>D</b>	Section <b>20</b>	Township <b>31 North</b>	Range <b>6 West</b>	County <b>San Juan County</b>	
Actual Footage Location of Well: <b>475 feet from the north line and 425 feet from the west line</b>					
Ground Level Elev: <b>6364 (U.G.)</b>	Producing Formation <b>Fruitland Coal</b>		Pool <b>Basin Fruitland Coal</b>		Dedicated Acreage: <b>320 Acres</b>

1. Outline the acreage dedicated to the subject well by colored pencil or hatchure marks on the plat below.
2. If more than one lease is dedicated to the well, outline each and identify the ownership thereof (both as to working interest and royalty).
3. If more than one lease of different ownership is dedicated to the well, have the interests of all owners been consolidated by communitization, unitization, force-pooling, etc?

☒ Yes    ☐ No    If answer is "yes," type of consolidation unitization

If answer is "no," list the owners and tract descriptions which have actually been consolidated. (Use reverse side of this form if necessary.) \_\_\_\_\_

No allowable will be assigned to the well until all interests have been consolidated (by communitization, unitization, forced-pooling, or otherwise) or until a non-standard unit, eliminating such interests, has been approved by the Commission.



**CERTIFICATION**

*I hereby certify that the information contained herein is true and complete to the best of my knowledge and belief.*

*William F. Clark*

Name  
**William F. Clark**

Position  
**Operations Manager**

Company  
**Blackwood & Nichols**

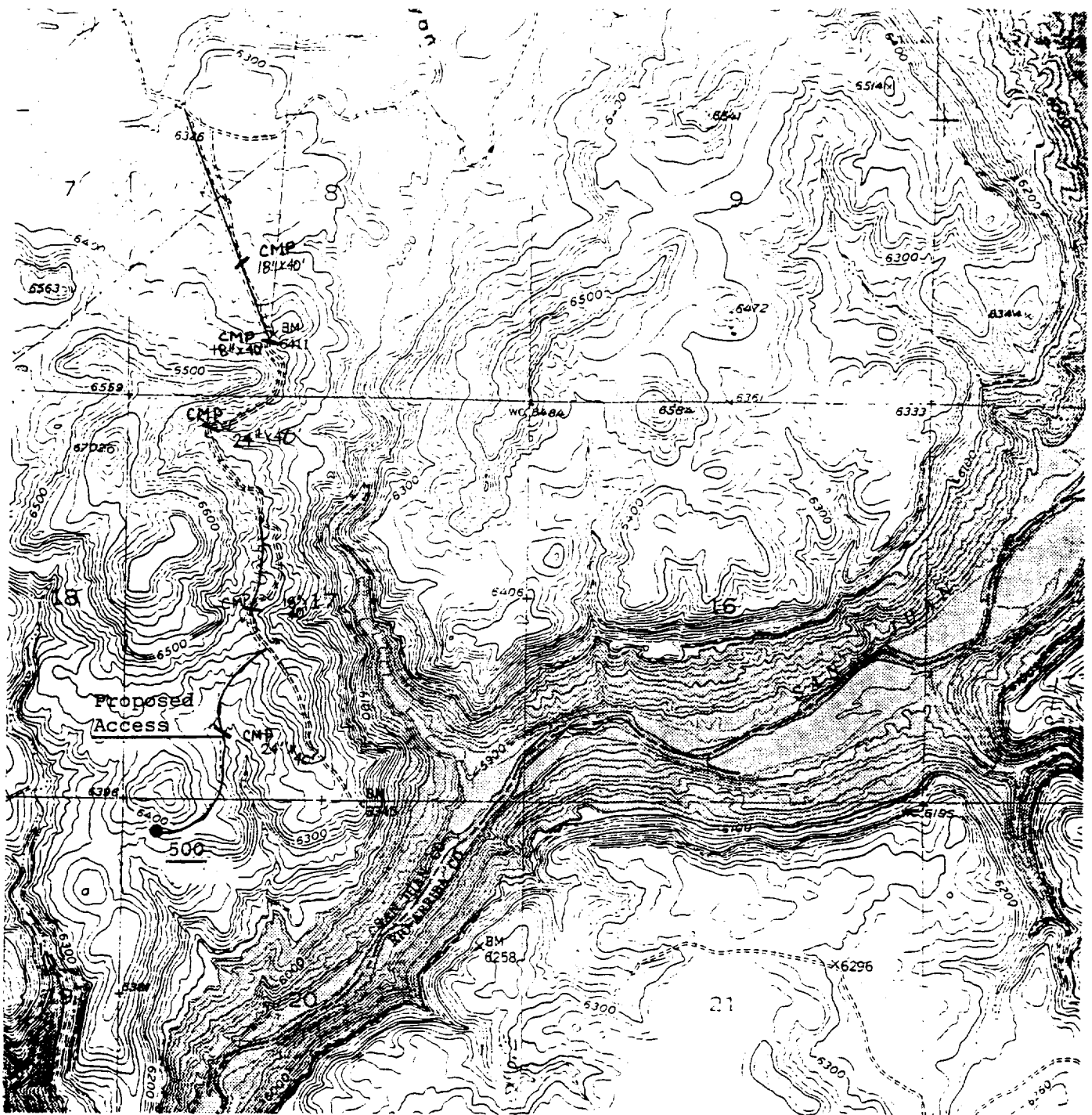
Date  
**December 7, 1989**

*I hereby certify that the well location shown on this plat was plotted from field notes of actual surveys made by me or under my supervision, and that the same is true and correct to the best of my knowledge and belief.*

Date Surveyed  
**November 17, 1989**

Registered Professional Engineer and/or Land Surveyor  
*Allison L. Kroeger*  
**Allison L. Kroeger, PLS**

Certificate No.  
**7922**



2.2 milest of road to existing all-weather road.

## BLACKWOOD & NICHOLS CO., LTD.

PROPOSED ACCESS ROAD  
To NEBU 500 - Located in Sec. 20, T.31N, R6W  
N.M.P.M. - San Juan County, N.M.

Date: November, 1989

Scale: 1"=2000'

KROEGER & ASSOC.  
DURANGO, COLO.