

30-045-2770

Form 160-3
(November 1983)
(formerly 9-3)

SUBMIT IN TRIPLICATE*
(Other instructions on reverse side)

Form approved.
Budget Bureau No. 1004-0136
Expires August 31, 1985

APR 26 1990
OIL CON. DIV.
UNITED STATES
DEPARTMENT OF THE INTERIOR
BUREAU OF LAND MANAGEMENT ROOM

APPLICATION FOR PERMIT TO DRILL, DEEPEN, OR PLUG BACK

1a. TYPE OF WORK
 DRILL DEEPEN PLUG BACK
 b. TYPE OF WELL
 OIL WELL GAS WELL OTHER
 SINGLE ZONE MULTIPLE ZONE

2. NAME OF OPERATOR
Union Texas Petroleum, INC.

3. ADDRESS OF OPERATOR
PO Box 2120 Houston, Texas 77252-2120

4. LOCATION OF WELL (Report location clearly and in accordance with any State requirements.)
At surface
1250 FSL & 1010 FWL
At proposed prod. zone

14. DISTANCE IN MILES AND DIRECTION FROM NEAREST TOWN OR POST OFFICE*
3 miles Northwest of Archuletta, NM

10. DISTANCE FROM PROPOSED* LOCATION TO NEAREST PROPERTY OR LEASE LINE, FT. (Also to nearest drig. unit line, if any) 1010'
18. NO. OF ACRES IN LEASE 2446

15. DISTANCE FROM PROPOSED LOCATION* TO NEAREST WELL, DRILLING, COMPLETED, OR APPLIED FOR, ON THIS LEASE, FT. 275'
19. PROPOSED DEPTH 2800'

21. ELEVATIONS (Show whether DF, RT, GR, etc.)
5827 GR

5. LEASE DESIGNATION AND SERIAL NO.
SF-078439

6. IF INDIAN, ALLOTTEE OR TRIBE NAME
N/A

7. UNIT AGREEMENT NAME
N/A

8. FARM OR LEASE NAME
Johnston Federal

9. WELL NO.
27

10. FIELD AND POOL, OR WILDCAT
Basin Fruitland Coal

11. SEC., T., R., M., OR BLK. AND SURVEY OR AREA
M
Sec. 12-T30N-R9W

12. COUNTY OR PARISH 13. STATE
San Juan NM

23. PROPOSED CASING AND CEMENTING PROGRAM

SIZE OF HOLE	SIZE OF CASING	WEIGHT PER FOOT	SETTING DEPTH	QUANTITY OF CEMENT
12 1/4"	9 5/8"	32.3	350'	210 sxs 248cuft B
8 3/4"	7"	23.0	2800'	215sxs 618cuft 65/35 & 100sxs 118cuft B

20. ROTARY OR CABLE TOOLS
Rotary
22. APPROX. DATE WORK WILL START*
May 1, 1990
DRILLING OPERATIONS AUTHORIZED ARE SUBJECT TO COMPLIANCE WITH ATTACHED "GENERAL REQUIREMENTS"

Union Texas Petroleum, INC. wishes to advise that we intend to drill a 12 1/4" hole with spud mud to 350' and set 9 5/8", 32.3#, K-55 ST&C casing to 350' cementing to surface with 210 sxs (248 cu ft) Class B cement with 2% CaCl2. Wait on cement 12 hours. Nipple up and test BOP. Drill 8 3/4" hole out of surface to 2800' with mud. Log well. Set 7", 23.0#, N-80 LT&C production casing to 2800' cementing to surface with 215 sxs (618 cu ft) 65/35 POZ with 12% gel and 12 1/4# gilsonite/sk, tailed by 100 sxs (118 cu ft) Class B cement with 2% CaCl2. Perforate pay section and if necessary acidize and frac with 250,000# sand in 180,000 gal 30# cross linked gel. Clean up well and install standard production equipment. Test well to reserve pit for a period not to exceed 30 days. Connect well to a gathering system.

IN ABOVE SPACE DESCRIBE PROPOSED PROGRAM: If proposal is to deepen or plug back, give data on present productive zone and proposed new productive zone. If proposal is to drill or deepen directionally, give pertinent data on subsurface locations and measured and true vertical depths. Give blowout preventer program, if any.

24. SIGNED Bruce White TITLE REG PERMIT COORD APPROVED AS AMENDED
(This space for Federal or State office use)

PERMIT NO. _____ APPROVAL DATE APR 23 1990
APPROVED BY _____ TITLE AREA MANAGER
CONDITIONS OF APPROVAL, IF ANY: o.k. (C) NMOCDF

Appropriate Office
Lease - 4 copies
Lesse - 3 copies

RECEIVED

State of New Mexico
Energy, Minerals and Natural Resources Department

Form C-102
Revised 1-1-89

APR 26 1990 OIL CONSERVATION DIVISION

P.O. Box 2088
Santa Fe, New Mexico 87504-2088

RECEIVED
MAIL ROOM
30 APR 26 AM 11:14

DISTRICT I
P.O. Box 1980, Hobbs, NM 88240

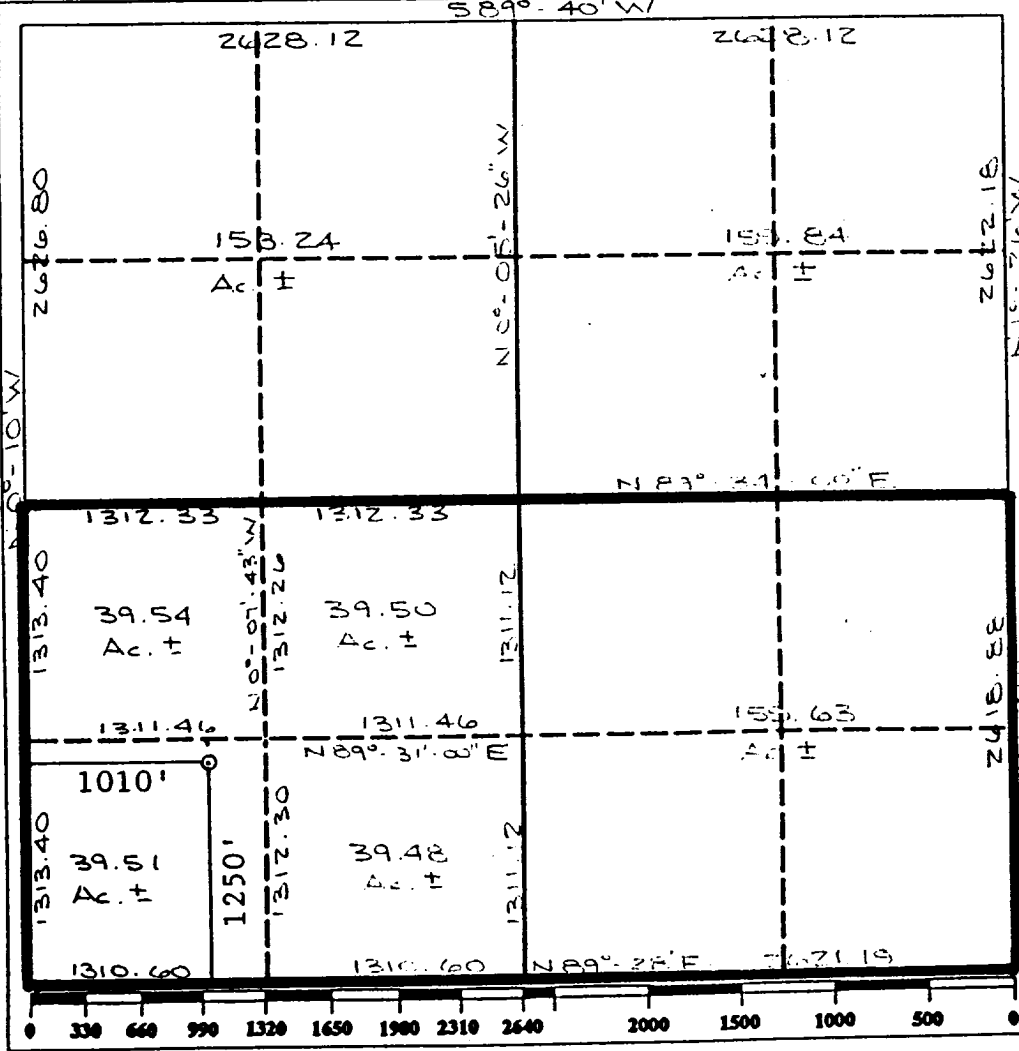
OIL CON. DIV.
DIST. 3

DISTRICT II
P.O. Drawer DD, Artesia, NM 88210

WELL LOCATION AND ACREAGE DEDICATION PLAT
All Distances must be from the outer boundaries of the section

Operator UNION TEXAS PETROLEUM			Lease JOHNSTON FEDERAL		Well No. 27
Unit Letter M	Section 12	Township 30N	Range 9W	County NMPM	San Juan
Actual Footage Location of Well: 1250 feet from the South line and 1010 feet from the West line					
Ground level Elev. 5827	Producing Formation Fruitland Coal	Pool Basin Fruitland Coal	Dedicated Acreage: s/2 317.66 318 Acres		

- Outline the acreage dedicated to the subject well by colored pencil or hatchure marks on the plat below.
- If more than one lease is dedicated to the well, outline each and identify the ownership thereof (both as to working interest and royalty).
- If more than one lease of different ownership is dedicated to the well, have the interest of all owners been consolidated by communitization, unitization, force-pooling, etc.?
 Yes No If answer is "yes" type of consolidation _____
 If answer is "no" list the owners and tract descriptions which have actually been consolidated. (Use reverse side of this form if necessary.)
 No allowable will be assigned to the well until all interests have been consolidated (by communitization, unitization, forced-pooling, or otherwise) or until a non-standard unit, eliminating such interest, has been approved by the Division.



OPERATOR CERTIFICATION
I hereby certify that the information contained herein is true and complete to the best of my knowledge and belief.

Signature: *Ken White*
Printed Name: **KEN WHITE**
Position: **REG PERMIT COORD**
Company: **UNION TEXAS PETROLEUM**
Date: **3-23-90**

SURVEYOR CERTIFICATION
I hereby certify that the well location shown on this plat was plotted from field notes of actual surveys made by me or under my supervision, and that the same is true and correct to the best of my knowledge and belief.

Date Surveyed: **3-23-90**
Signature: *B. Tullis*
Professional Surveyor
REGISTERED PROFESSIONAL LAND SURVEYOR
Certificate No. **9672**
B. J. Tullis

Exhibit I

EXHIBIT

NO. 10

IN COURT

FILED