

UNITED STATES
DEPARTMENT OF THE INTERIOR
GEOLOGICAL SURVEY

(Other instructions on
reverse side)

30-045-27775
5. LEASE DESIGNATION AND SERIAL NO.
SF078988

APPLICATION FOR PERMIT TO DRILL, DEEPEN, OR PLUG BACK

1a. TYPE OF WORK

DRILL ☒

DEEPEN ☐

PLUG BACK ☐

b. TYPE OF WELL

OIL
WELL ☐

GAS
WELL ☐

OTHER

SINGLE
ZONE ☒

MULTIPLE
ZONE ☐

2. NAME OF OPERATOR

Blackwood & Nichols Co. Ltd.

3. ADDRESS OF OPERATOR

P.O. Box 1237, Durango, Co. 81302-1237

4. LOCATION OF WELL (Report location clearly and in accordance with any State requirements.)*

At surface

1470' FSL - 865' FWL

At proposed prod. zone

Same

14. DISTANCE IN MILES AND DIRECTION FROM NEAREST TOWN OR POST OFFICE*

21 Miles NE of Blanco, New Mexico

15. DISTANCE FROM PROPOSED*
LOCATION TO NEAREST
PROPERTY OR LEASE LINE, FT.

(Also to nearest drilg. unit line, if any) 865'

18. DISTANCE FROM PROPOSED LOCATION*
TO NEAREST WELL, DRILLING, COMPLETED,
OR APPLIED FOR, ON THIS LEASE, FT.

2900'

16. NO. OF ACRES IN LEASE

2560.00

17. NO. OF ACRES ASSIGNED
TO THIS WELL

320

19. PROPOSED DEPTH

3226'

20. ROTARY OR CABLE TOOLS

Rotary

21. ELEVATIONS (Show whether DF, RT, GR, etc.)

6303' (U.G.)

22. APPROX. DATE WORK WILL START*

May 1, 1990

23.

PROPOSED CASING AND CEMENTING PROGRAM

SIZE OF HOLE	SIZE OF CASING	WEIGHT PER FOOT	SETTING DEPTH	QUANTITY OF CEMENT
12 1/4"	9 5/8"	36#	300'	295 cuft/circ. to surface
8 3/4"	7"	23#	2936'	940 cuft/circ. to surface
6 1/4"	5 1/2"	17#	2836'-3226'	39 cuft/ circ. to liner top

Propose to spud in the San Jose formation. Will drill a 12 1/4" hole to a TD of 300'. Run surface casing and cement with cement returns to surface. WOC 12 hours. Test to 600 psi/30 mins. Drill a 8 3/4" hole to a TD of 2936' using fresh water mud. No poisonous gases or abnormal pressures are anticipated. Run intermediate casing and cement with cement returns to surface. WOC 12 hours. Test to 1500 psi/30 mins. Drill a 6 1/4" hole to a TD of 3266' using water and air. Run a mud logging unit while drilling this interval. Run the production liner. The liner will be cemented if the wells natural flow capacity indicates the need for fracture stimulation.

Surface is Bureau of Land Management with 25' of the south edge of the construction zone on Bureau of Reclamation.

IN ABOVE SPACE DESCRIBE PROPOSED PROGRAM: If proposal is to deepen or plug back, give data on present productive zone and proposed new production zone. If proposal is to drill or deepen directionally, give pertinent data on subsurface locations and measured and true vertical depths. Give blowout preventer program, if any.

24.

SIGNED

William F. Clark

TITLE Operations Manager

DATE March 26, 1990

(This space for Federal or State office use)

PERMIT NO.

RECEIVED

APPROVAL DATE

APPROVED
AS AMENDED

APPROVED BY

MAY 01 1990

TITLE

CONDITIONS OF APPROVAL, IF ANY

OIL CON. DIV
DIST. 3

Nmoca

*See Instructions On Reverse Side

APR 25 1990
AREA MANAGER

NEW MEXICO OIL CONSERVATION COMMISSION
WELL LOCATION AND ACREAGE DEDICATION FORM

Form C-102
Supersedes C-128
Effective 1-1-65

All distances must be from the outer boundaries of the Section:

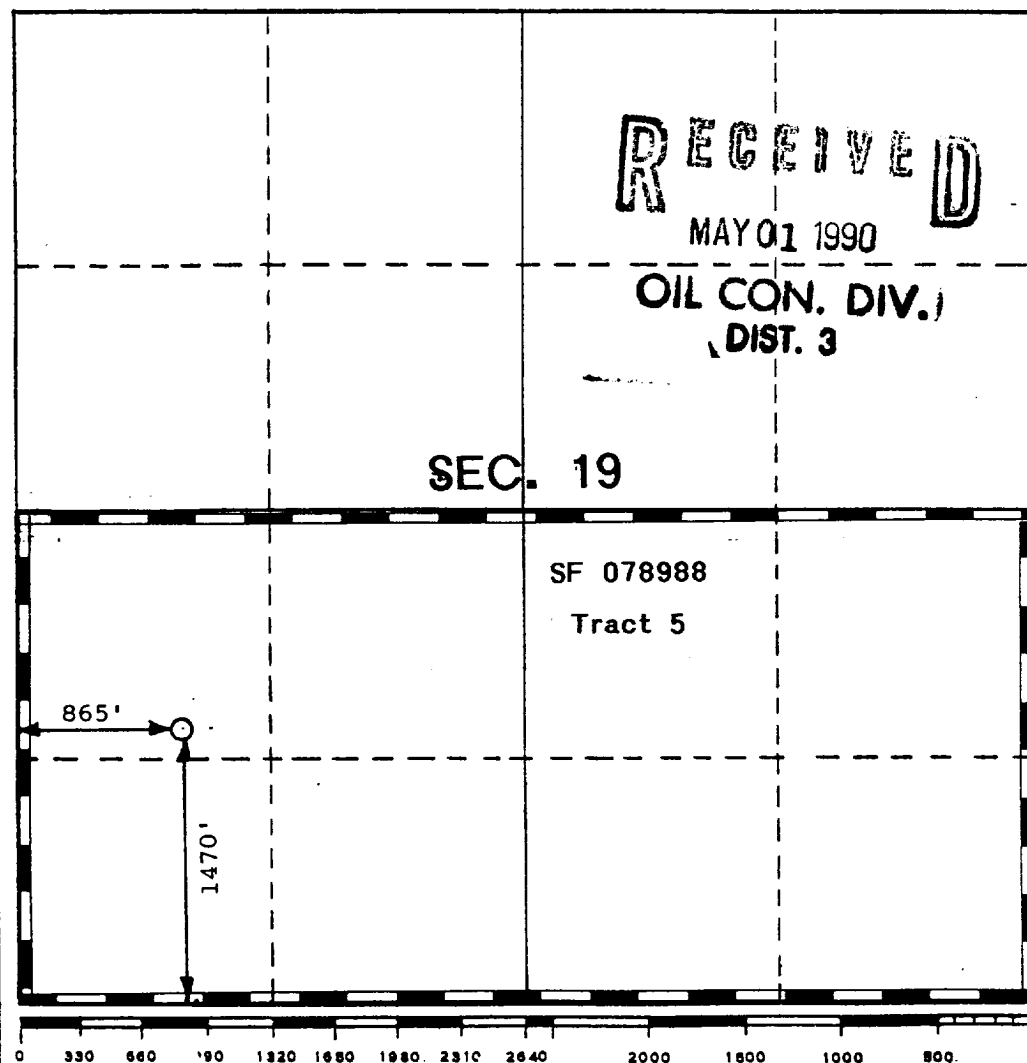
Operator BLACKWOOD & NICHOLS CO., LTD.		Lease NORTHEAST BLANCO UNIT		Well No. 486
Unit Letter L	Section 19	Township 31 North	Range 6 West	County San Juan County
Actual Footage Location of Well: 1470 feet from the south line and 865' feet from the west line				
Ground Level Elev. 6303 (U.G.)	Producing Formation Fruitland Coal	Pool Basin Fruitland Coal	Dedicated Acreage: 320 Acres	

1. Outline the acreage dedicated to the subject well by colored pencil or hachure marks on the plat below.
2. If more than one lease is dedicated to the well, outline each and identify the ownership thereof (both as to working interest and royalty).
3. If more than one lease of different ownership is dedicated to the well, have the interests of all owners been consolidated by communitization, unitization, force-pooling, etc?

☒ Yes ☐ No If answer is "yes," type of consolidation Unitization

If answer is "no," list the owners and tract descriptions which have actually been consolidated. (Use reverse side of this form if necessary.)

No allowable will be assigned to the well until all interests have been consolidated (by communitization, unitization, forced-pooling, or otherwise) or until a non-standard unit, eliminating such interests, has been approved by the Commission.



CERTIFICATION

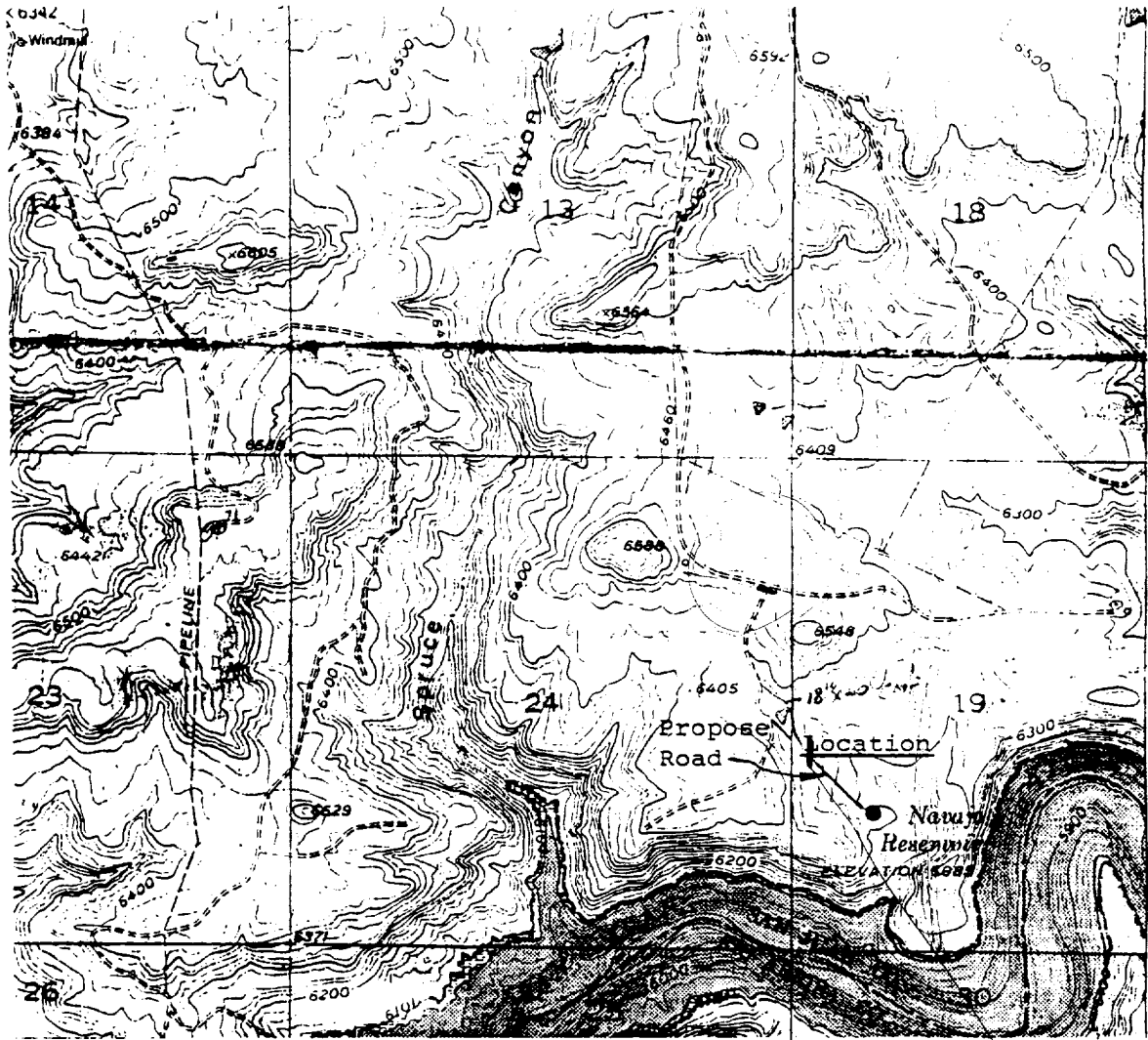
I hereby certify that the information contained herein is true and complete to the best of my knowledge and belief.

Name
William Flanigan
Position
Operations Manager
Company
Blackwood & Nichols Co.
Date
March 26, 1990

I hereby certify that the well location shown on this plat was plotted from field notes of actual surveys made by me or under my supervision, and that the same is true and correct to the best of my knowledge and belief.

Date Surveyed
March 16, 1990
Registered Professional Engineer and/or Land Surveyor
Allison L. Kroeger
Allison L. Kroeger, PLS
Certificate No.

7922



R.7W. R.6W.
T.31N.

Construct 1,450' of new road.
Rehabilitate 1,450' of existing road.

pat

BLACKWOOD & NICHOLS CO., LTD.

PROPOSED ACCESS ROAD
TO NEBU 486 IN SEC. 19, T.31N. R. 6W.
N.M.P.M. - SAN JUAN COUNTY, N.M.

Date: March, 1990

Scale: 1"=2000'

KROEGER & ASSOC.
DURANGO, COLO.