

UNITED STATES
DEPARTMENT OF THE INTERIOR
BUREAU OF LAND MANAGEMENT

APPLICATION FOR PERMIT TO DRILL, DEEPEN, OR PLUG BACK

1a. TYPE OF WORK

DRILL ☒

DEEPEN ☐

PLUG BACK ☐

b. TYPE OF WELL

OIL
WELL ☐

GAS
WELL ☒

OTHER Coal Seam

SINGLE
ZONE ☒

MULTIPLE
ZONE ☐

2. NAME OF OPERATOR

Amoco Production Company

ATTN: J. L. Hampton

3. ADDRESS OF OPERATOR

P. O. Box 800 Denver, Colorado 80201

4. LOCATION OF WELL (Report location clearly and in accordance with any State requirements.)*

At surface

925' FWL, ~~1840'~~ FSL NE/SW
At proposed prod. zone

14. DISTANCE IN MILES AND DIRECTION FROM NEAREST TOWN OR POST OFFICE*

12 miles from Aztec, NM

10. DISTANCE FROM PROPOSED*

LOCATION TO NEAREST
PROPERTY OR LEASE LINE, FT.
(Also to nearest drg. unit line, if any)

925'

16. NO. OF ACRES IN LEASE

~~2065.97~~
1160.05

17. NO. OF ACRES ASSIGNED
TO THIS WELL

320 acres W 12 ~~308.47~~
204.47

18. DISTANCE FROM PROPOSED LOCATION*

TO NEAREST WELL, DRILLING, COMPLETED,
OR APPLIED FOR, ON THIS LEASE, FT.

19. PROPOSED DEPTH

3468' TD

20. ROTARY OR CABLE TOOLS

Rotary

21. ELEVATIONS (Show whether DF, RT, GR, etc.)

6676' GR

22. APPROX. DATE WORK WILL START*

As soon as permitted

23.

PROPOSED CASING AND CEMENTING PROGRAM

DRILLING OPERATIONS AUTHORIZED ARE

SIZE OF HOLE	SIZE OF CASING	WEIGHT PER FOOT	SETTING DEPTH
12 1/4"	9 5/8"	36#	250'
8 3/4"	7"	20#	3223'
6 1/4"	5 1/2"	23#	3468' (TD)

SUBJECT TO CONDITIONS WITH ATTACHED

"GENERAL REQUIREMENTS"

200 cf Class B (cement to surface)

902 cf Class B (cement to surface)

None

Notice of Staking was Submitted: 3/13/90

Lease Description:

T31N, R9W:

Sec. 19: Lots 5-20

Sec. 20: Lots 1-16

Sec. 29: Lots 1, 2, 3, 5-12

Sec. 30: Lots 5, 6, 8-19

RECEIVED
MAY 24 1990

OIL CON. DIV.
DIST. 3

IN ABOVE SPACE DESCRIBE PROPOSED PROGRAM: If proposal is to deepen or plug back, give data on present productive zone and proposed new productive zone. If proposal is to drill or deepen directionally, give pertinent data on subsurface locations and measured and true vertical depths. Give blowout preventer program, if any.

24.

SIGNED

J. L. Hampton/CB

TITLE Sr. Staff Admin. Supervisor

DATE

3/28/90

(This space for Federal or State office use)

PERMIT NO.

APPROVAL DATE

APPROVED

AS AMENDED

APPROVED BY

TITLE

DATE

CONDITIONS OF APPROVAL, IF ANY:

Held C-104 FOR N.S.C. + N.S.P.
(8) NMOC

*See Instructions On Reverse Side

MAY 22 1990
John Skelton
AREA MANAGER

Submit to Appropriate
District Office
State Lease - 4 copies
Fee Lease - 3 copies

State of New Mexico
Energy, Minerals and Natural Resources Department

Form C-102
Revised 1-1-89

OIL CONSERVATION DIVISION

DISTRICT I
P.O. Box 1980, Hobbs, NM 88240

P.O. Box 2088

Santa Fe, New Mexico 87504-2088

DISTRICT II
P.O. Drawer DD, Artesia, NM 88210

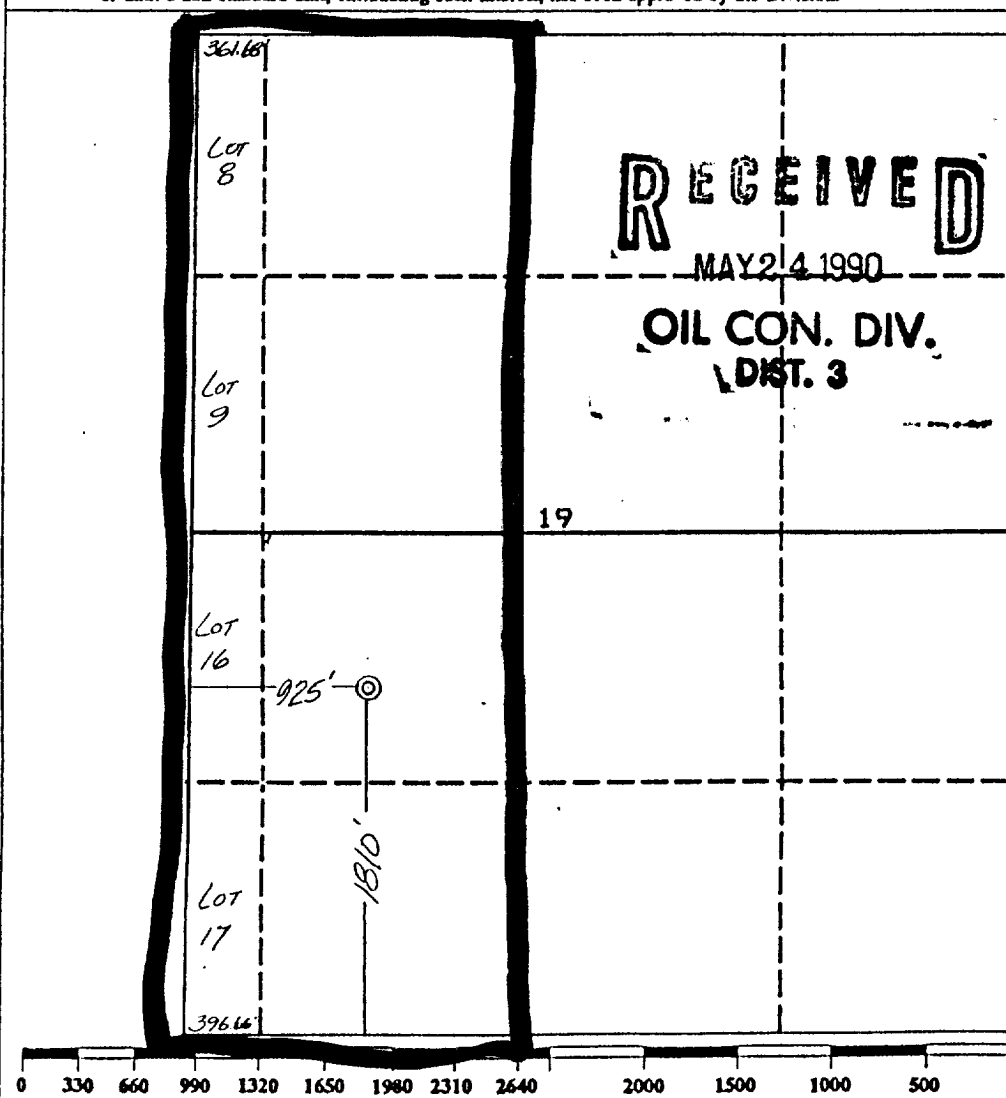
DISTRICT III
1000 Rio Brazos Rd., Aztec, NM 87410

WELL LOCATION AND ACREAGE DEDICATION PLAT

All Distances must be from the outer boundaries of the section

Operator AMOCO PRODUCTION COMPANY			Lease BARRETT GAS COM /A/		Well No. # 1
Unit Letter K	Section 19	Township 31 NORTH	Range 9 WEST	County NMPM SAN JUAN	
Actual Footage Location of Well: 1810 feet from the SOUTH line and 925 feet from the WEST line					
Ground level Elev. 6676	Producing Formation Fruitland Coal		Pool Basin Fruitland Coal Gas	Dedicated Acreage: 204.46 W/2 304.04 Acres	

- Outline the acreage dedicated to the subject well by colored pencil or hatchure marks on the plat below.
- If more than one lease is dedicated to the well, outline each and identify the ownership thereof (both as to working interest and royalty).
- If more than one lease of different ownership is dedicated to the well, have the interest of all owners been consolidated by communization, unitization, force-pooling, etc.?
☐ Yes ☐ No If answer is "yes" type of consolidation _____
If answer is "no" list the owners and tract descriptions which have actually been consolidated. (Use reverse side of this form if necessary).
No allowable will be assigned to the well until all interests have been consolidated (by communization, unitization, forced-pooling, or otherwise) or until a non-standard unit, eliminating such interest, has been approved by the Division.



OPERATOR CERTIFICATION

I hereby certify that the information contained herein is true and complete to the best of my knowledge and belief.

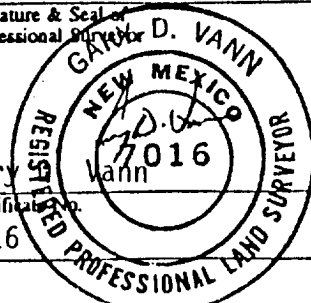
Signature *J.L. Hampton*
Printed Name **J.L. Hampton**
Position **Sr Staff Admin. Supr**
Company **Amoco Prod.**
Date **4/11/90**

SURVEYOR CERTIFICATION

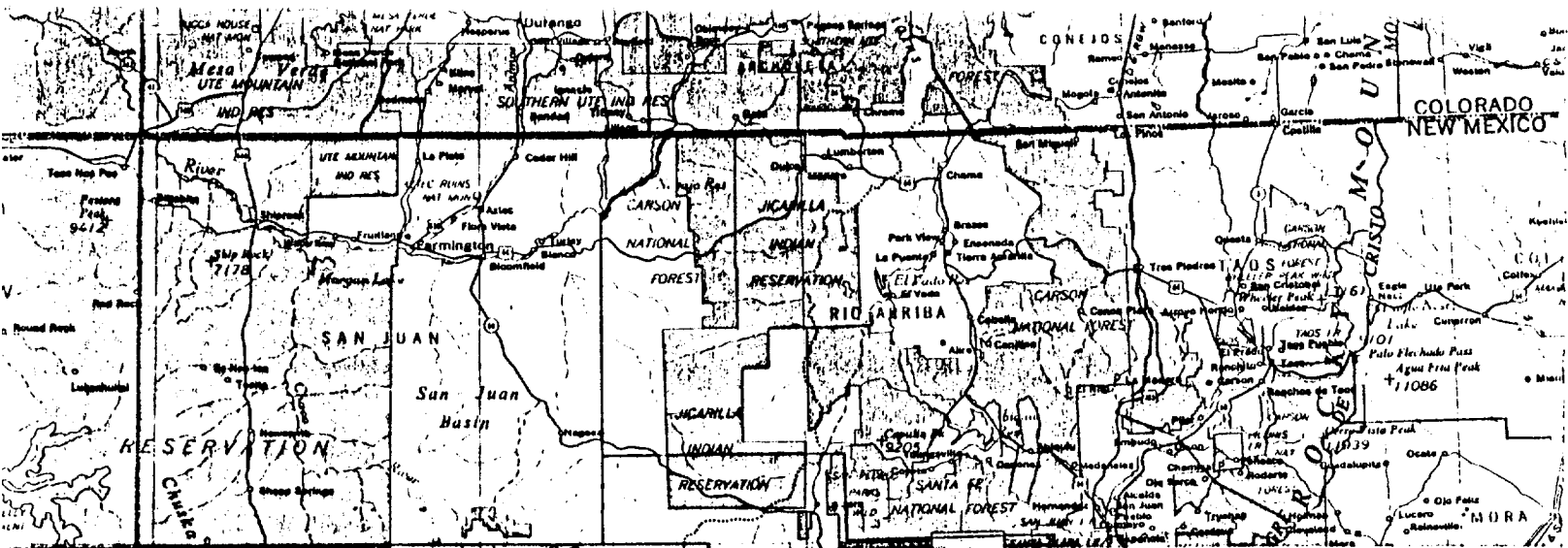
I hereby certify that the well location shown on this plat was plotted from field notes of actual surveys made by me or under my supervision, and that the same is true and correct to the best of my knowledge and belief.

Date Surveyed **March 30, 1990**

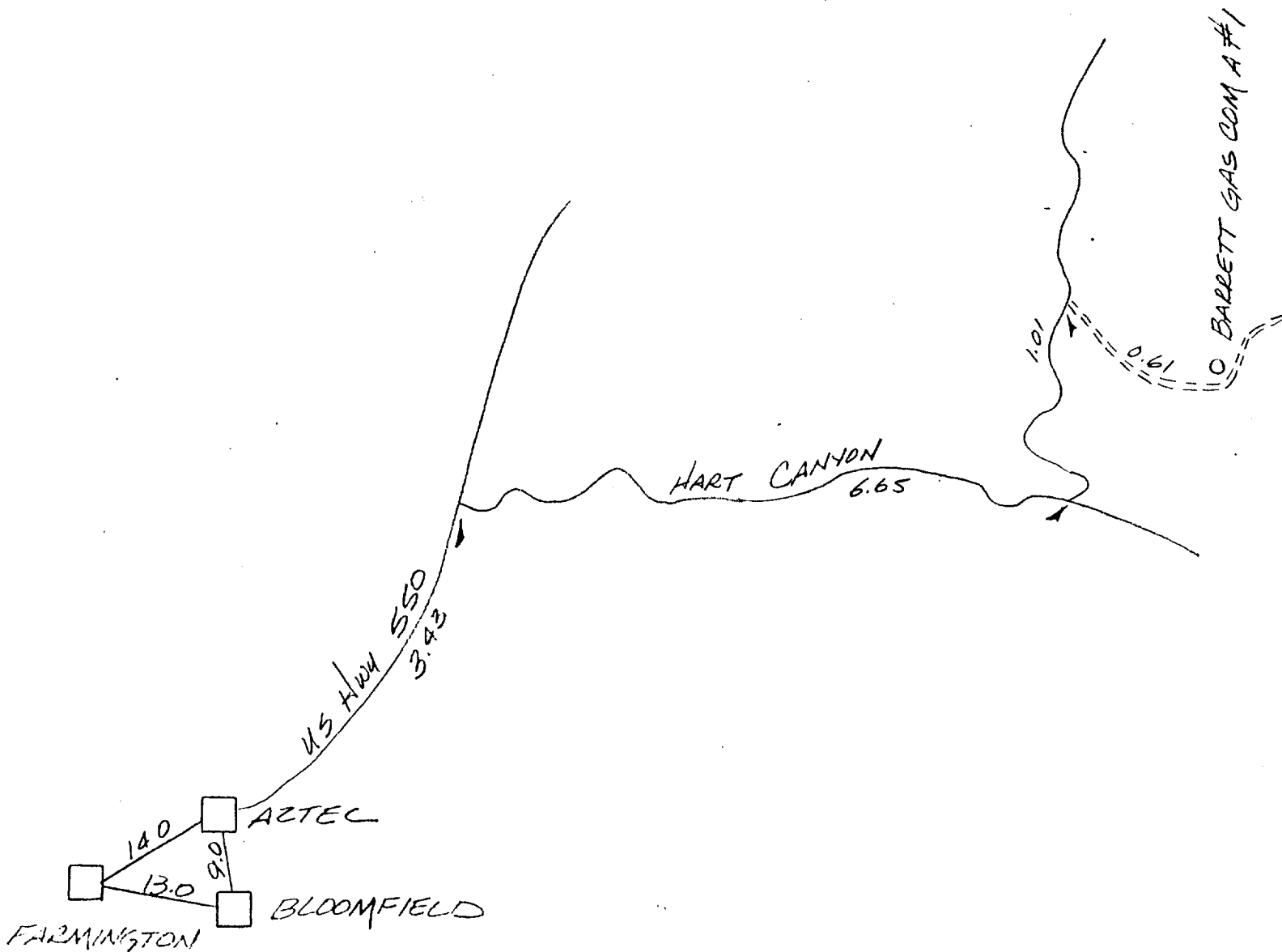
Signature & Seal of Professional Surveyor
GARY D. VANN
7016
Gary Vann
7016



RECEIVED
JAN 11 1964
U.S. AIR FORCE
OFFICE OF THE
JOINT CHIEFS OF STAFF
WASHINGTON, D.C.



BARRETT GAS COM #A/ # 1
 1810' F/SL 925' F/WL
 SEC. 19, T31N, R9W, NMPM
 RAIL POINT:
 MUD POINT:
 CEMENT POINT:



152.63

20.03
- 66

120.37
120.37

132.1190

1321.48
220.00

521.48