

UNITED STATES
DEPARTMENT OF THE INTERIOR
BUREAU OF LAND MANAGEMENT

SUNDRY NOTICES AND REPORTS ON WELLS

1. TYPE OF WELL GAS		5. LEASE NUMBER SF-078766	
2. OPERATOR MERIDIAN OIL INC.		6. IF INDIAN, ALL. OR TRIBE NAME	
3. ADDRESS & PHONE NO. OF OPERATOR P O BOX 4289 FARMINGTON, NM 87499		7. UNIT AGREEMENT NAME ROSA UNIT	
4. LOCATION OF WELL 790'F 2415'FEL		8. FARM OR LEASE NAME ROSA UNIT	
		9. WELL NO. 274	
		10. FIELD, POOL, OR WILDCAT BASIN FRUITLAND COAL	
		11. SEC. T. R. M OR BLK. SEC. 16 T31N R06W NMPM	
14. PERMIT NO.	15. ELEVATIONS 6352'GL	12. COUNTY RIO ARRIBA	13. STATE NM
16. NOTICE OF INTENTION TO: Change Plans			
17. Describe proposed or completed operations			

Attached is a revised operations plan and BOPE diagrams
for the subject well.

RECEIVED
OCT 25 1990
OIL CON. DIV.
DIST. 3

18. AUTHORIZED BY: [Signature]
REGULATORY AFFAIRS

8-31-90
DATE

NOTE: THIS FORMAT IS ISSUED IN LIEU OF US BLM FORM 3160-5.

=====

(This space for Federal or State office use)

APPROVED BY _____
CONDITION OF APPROVAL, IF ANY:

TITLE _____

APPROVED
OCT 12 1990
DATE
Ken Townsend
FOR AREA MANAGER
FARMINGTON RESOURCE

MMCCO

Well Name: 274 ROSA UNIT
 Sec. 16 T31N R06W
 BASIN FRUITLAND COAL

790'FNL 2415'FEL
 RIO ARRIBA NEW MEXICO
 Elevation 6352'GL

Formation tops: Surface- SAN JOSE
 Ojo Alamo- 2345
 Kirtland- 2455
 Fruitland- 2950
 Fruitland Coal Top- 3026
 Fruitland Coal Base- 3194
 Pictured Cliffs- 3196

Total Depth- 3195

Logging Program: Mud logs from 2950 to total depth.

Mud Program:	Interval	Type	Weight	Visc.	Fl. Loss
	0 - 200	Spud	8.4 - 8.9	40-50	no contro.
	200 - 3195	Non-dispersed	8.4 - 9.5	30-60	no contro.

Casing Program:	Hole Size	Depth Interval	Csg. Size	Weight	Grade
	12 1/4"	0 - 200	8 5/8"	24.0#	K-55
	7 7/8"	0 - 3195	5 1/2"	15.5#	K-55
Tubing Program:		0 - 3195	2 3/8"	4.7#	J-55

Float Equipment: 8 5/8" surface casing - saw tooth guide shoe. Centralizers will be run in accordance with Onshore Order #2.

5 1/2" production casing - float shoe on bottom. Three centralizers run every other joint above shoe. Two turbolizing type centralizers - one below and one into the base of the Ojo Alamo @ 2455'. Standard centralizers thereafter every fourth joint up to the base of the surface pipe.

Wellhead Equipment: 8 5/8" x 5 1/2" x 2 3/8" x 11" 3000 psi xmas tree assembl

Cementing:

8 5/8" surface casing - cement with 211 sacks of class "B" cement with 1/4# flocele/sack and 3% calcium chloride (248 cu ft. of slurry, 200% excess to circulate to surface). WOC 12 hours. Test casing to 600 psi for 30 minutes.

5 1/2" production casing - lead with 516 sacks of 65/35 class "B" poz with 6% gel, 2% calcium chloride and 1/2 cu.ft. Perlite/sack (10.3 gallons of water/sack) tail with 100 sacks of class "B" with 2% calcium chloride. 1114 cu ft. of slurry, 100% excess to circulate to surface. If hole conditions permit, a 600 ft spacer will be run ahead of the cement slurry to avoid mud contamination of the cement. WOC 12 hours. If cement does not circulate to surface, a temperature log will be run after 8 hours to determine TOC.

RECEIVED
 OCT 2 5 1990
 ON COAL DIV.
 401 3

BOP and Tests:

Surface to TD - 11" 2000 psi(minimum) double gate BOP stack (Reference Figure #1 and #2). Prior to drilling out surface casing, test rams to 600 psi for 30 minutes.

Completion - 6" 2000 psi(minimum) double gate BOP stack (Reference Figure #2). Prior to completion operations, test rams to 3000 psi for 15 minutes.

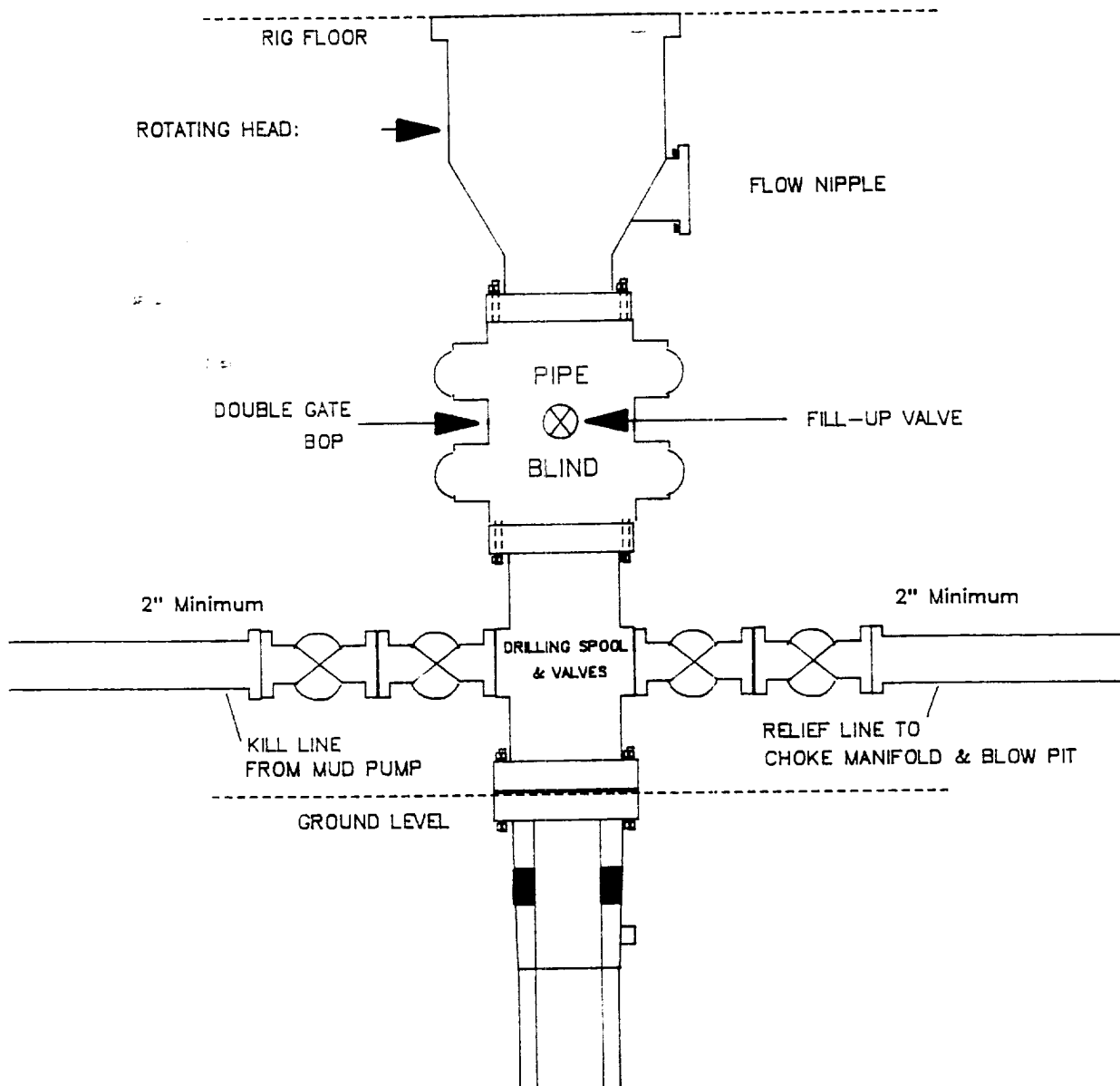
From surface to TD - choke manifold (Reference Figure #3).

Pipe rams will be actuated at least once each day and blind rams actuated once each trip to test proper functioning. An upper kelly cock valve with handle and drill string safety valves to fit each drill string will be maintained and available on the rig floor.

Additional Information:

- * The Fruitland coal formation will be completed.
- * Anticipated Fruitland pore pressure is 1674 psi.
- * This gas is dedicated.
- * The N/2 of Section 16 is dedicated to this well.
- * New casing will be utilized.
- * Cementing Contractor will provide the BLM with a chronological log including the pump rate and pressure, and the slurry density and volume for all cement jobs.
- * Pipe movement (either rotation or reciprocation) will be done if hole conditions permit.

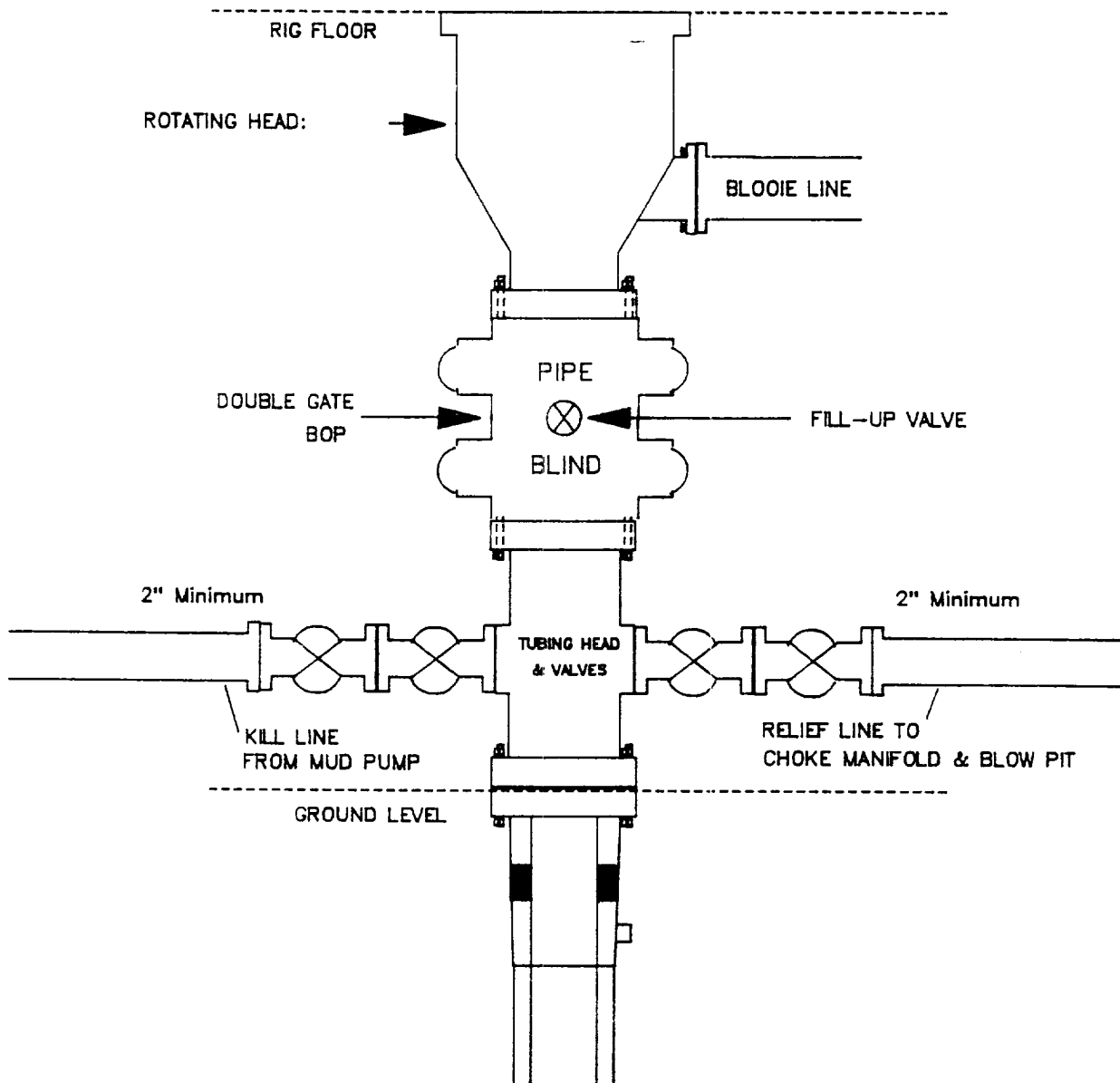
MERIDIAN OIL INC.
Drilling Rig
BOP Configuration



Minimum BOP installation for a typical Fruitland Coal well from surface to Total Depth. 11" Bore (10" Nominal), 2000psi minimum working pressure double gate BOP to be equipped with blind and pipe rams. A Schaffer Type 50 or equivalent rotating head to be installed on the top of BOP. All equipment is 2000psi working pressure/or greater.

Figure #1

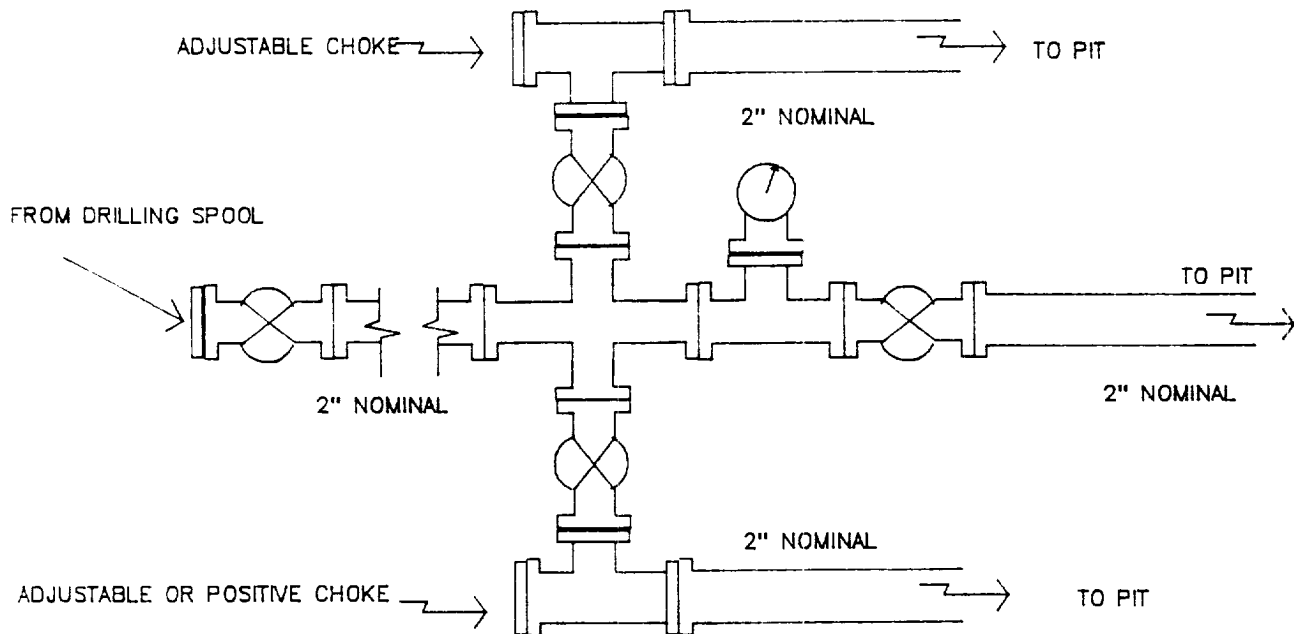
MERIDIAN OIL INC.
Completion Rig
BOP Configuration



Minimum BOP installation for Completion Operations. 7 1/16" Bore (6" Nominal), 2000psi minimum working pressure double gate BOP to be equipped with blind and pipe rams.

Figure #2

MERIDIAN OIL INC.
Typical Fruitland Coal Well
Choke Manifold Configuration



Minimum choke manifold installation for a typical Fruitland Coal well from surface to Total Depth. 2", 2000psi working pressure equipment with two chokes.

Figure #3