

UNITED STATES
DEPARTMENT OF THE INTERIOR
BUREAU OF LAND MANAGEMENT

APPLICATION FOR PERMIT TO DRILL, DEEPEN, OR PLUG BACK

1a. TYPE OF WORK

DRILL ☒

DEEPEN ☐

PLUG BACK ☐

b. TYPE OF WELL

OIL
WELL ☐

GAR
WELL ☒

OTHER

SINGLE
ZONE ☐

MULTIPLE
ZONE ☐

2. NAME OF OPERATOR

Robert L. Bayless

3. ADDRESS OF OPERATOR

P.O. Box 168, Farmington, NM 87499

4. LOCATION OF WELL (Report location clearly and in accordance with any State requirements.)
At surface

1235' FNL & 2340' FEL
At proposed prod. zone

14. DISTANCE IN MILES AND DIRECTION FROM NEAREST TOWN OR POST OFFICE*

10. DISTANCE FROM PROPOSED*

LOCATION TO NEAREST
PROPERTY OR LEASE LINE, FT.
(Also to nearest drlg. unit line, if any)

18. DISTANCE FROM PROPOSED LOCATION*
TO NEAREST WELL, DRILLING, COMPLETED,
OR APPLIED FOR, ON THIS LEASE, FT.

16. NO. OF ACRES IN LEASE

2560

19. PROPOSED DEPTH

2515'

17. NO. OF ACRES ASSIGNED
TO THIS WELL

N/320

20. ROTARY OR CABLE TOOLS

0 - TD

21. ELEVATIONS (Show whether DF, RT, GR, etc.)

5774' GL 5704' RKB

22. APPROX. DATE WORK WILL START*

ASAP

23. PROPOSED CASING AND CEMENTING PROGRAM

SIZE OF HOLE	SIZE OF CASING	WEIGHT PER FOOT	SETTING DEPTH
12-1/4"	8-5/8"	24.0#	120'
7-7/8"	4-1/2"	10.5#	2515'

DRILLING OPERATIONS AUTHORIZED ARE
SUBJECT TO COMPLIANCE WITH ATTACHED

"GENERAL REQUIREMENTS"

90 sx Class B (106 ft³)
500 sx assorted cements-see long-
string cementing guidelines for
details

Will drill 12-1/4" hole to 120' and set 120' of 8-5/8" 24.0 #/ft J-55 used casing, cementing with 106 ft³ Class B cement, circulated to surface. Will drill 7-7/8" hole to 2515' and run 2515' of 4-1/2" 10.5 #/ft J-55 new casing and cement as per attached longstring cementing guidelines. Circulating medium while drilling will be clear water, natural mud and waterloss control additives. No abnormal pressures or temperatures are anticipated. Will run Induction and Density Logs. Blowout preventer and safety equipment schematics are attached. The gas from this formation is not dedicated to a gas contract.

ESTIMATED TIPS: Ojo Alamo - 1210'
Kirtland - 1355'
Fruitland - 2090'
Pictured Cliffs - 2434'
Total Depth - 2515'

IN ALL CASES WITH PROPOSED PROGRAM: If proposal is to deepen or plug back, give data on present productive zone and proposed new productive zone. If proposal is to drill or deepen directionally, give pertinent data on subsurface locations and measured and true vertical depths. Give blowout preventer program, if any.

24.

SIGNED

Kevin H. McCord

TITLE Petroleum Engineer

DATE 6-1-90

(This space for Federal signature)

PERMIT NO.

APPROVAL DATE

APPROVED BY

JUL 9 1990

TITLE

DATE

CONDITIONS OF APPROVAL, IF ANY

OIL CON. DIV.
DIST. 3

*See Instructions On Reverse Side

Title 18 U.S.C. Section 1001, makes it a crime for any person knowingly and willfully to make to any department or agency of the United States any false, fictitious or fraudulent statements or representations as to any matter within its jurisdiction.

Submit to Appropriate
District Office
State Lease - 4 copies
Fee Lease - 3 copies

State of New Mexico
Energy, Minerals and Natural Resources Department

Form C-102
Revised 1-3-89

OIL CONSERVATION DIVISION

P.O. Box 2088
Santa Fe, New Mexico 87504-2088

DISTRICT I
P.O. Box 1980, Hobbs, NM 88240

DISTRICT II
P.O. Drawer DD, Artesia, NM 88210

DISTRICT III
1000 Rio Brazos Rd., Aztec, NM 87410

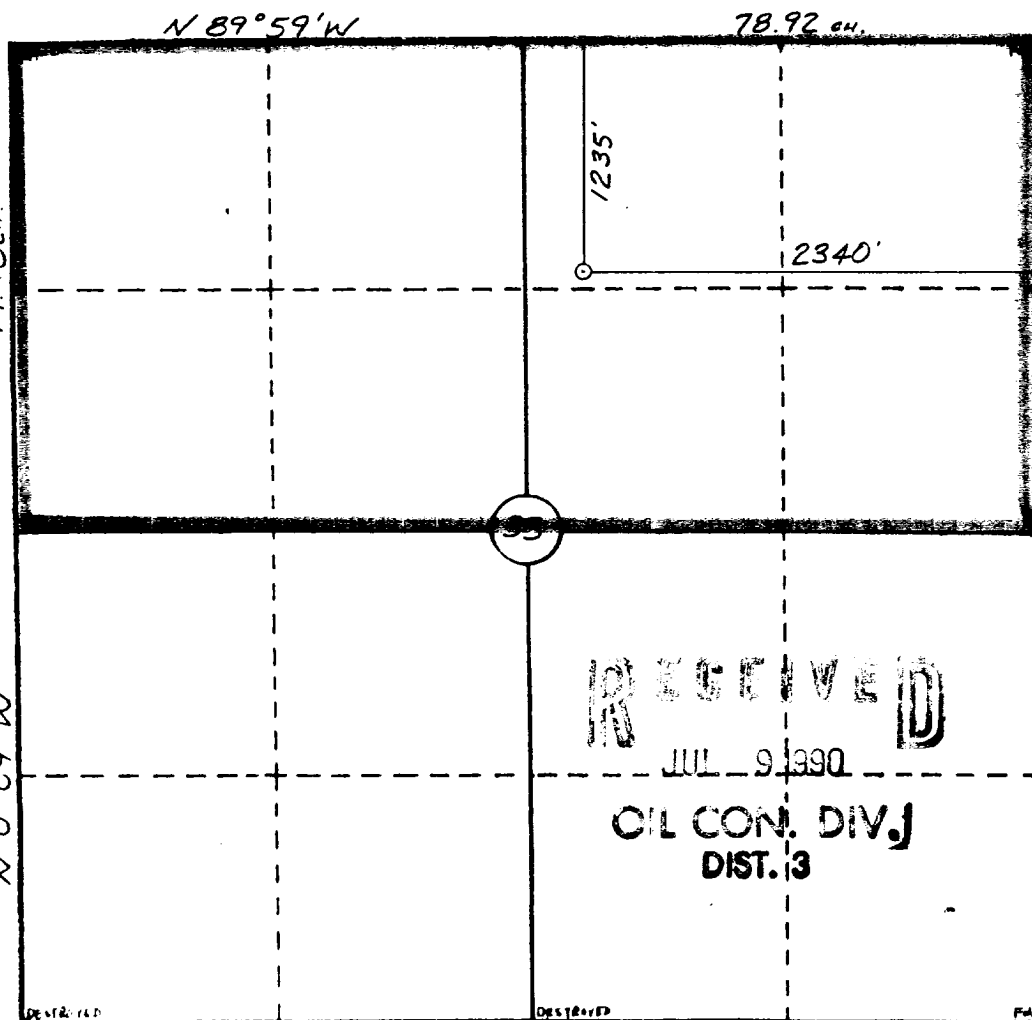
WELL LOCATION AND ACREAGE DEDICATION PLAT

All Distances must be from the outer boundaries of the section

Operator BAYLESS MINERALS, INC.			Lease SANTA ROSA		Well No. 33-1
Unit Letter B	Section 33	Township 30 N	Range 9 W	County San Juan	
Actual Footage Location of Well: 1235 feet from the North line and 2340 feet from the East line					
Ground level Elev. 5774	Producing Formation Fruitland Coal		Pool Basin Fruitland Coal		Dedicated Acreage: 320 Acres

1. Outline the acreage dedicated to the subject well by colored pencil or hatchure marks on the plat below.
2. If more than one lease is dedicated to the well, outline each and identify the ownership thereof (both as to working interest and royalty).
3. If more than one lease of different ownership is dedicated to the well, have the interest of all owners been consolidated by communitization, unitization, force-pooling, etc.?
☐ Yes ☐ No If answer is "yes" type of consolidation _____
If answer is "no" list the owners and tract descriptions which have actually been consolidated. (Use reverse side of this form if necessary.)
No allowable will be assigned to the well until all interests have been consolidated (by communitization, unitization, forced-pooling, or otherwise) or until a non-standard unit, eliminating such interest, has been approved by the Division.

0 330 660 990 1320 1650 1980 2310 2640 2000 1500 1000 500 0



OPERATOR CERTIFICATION

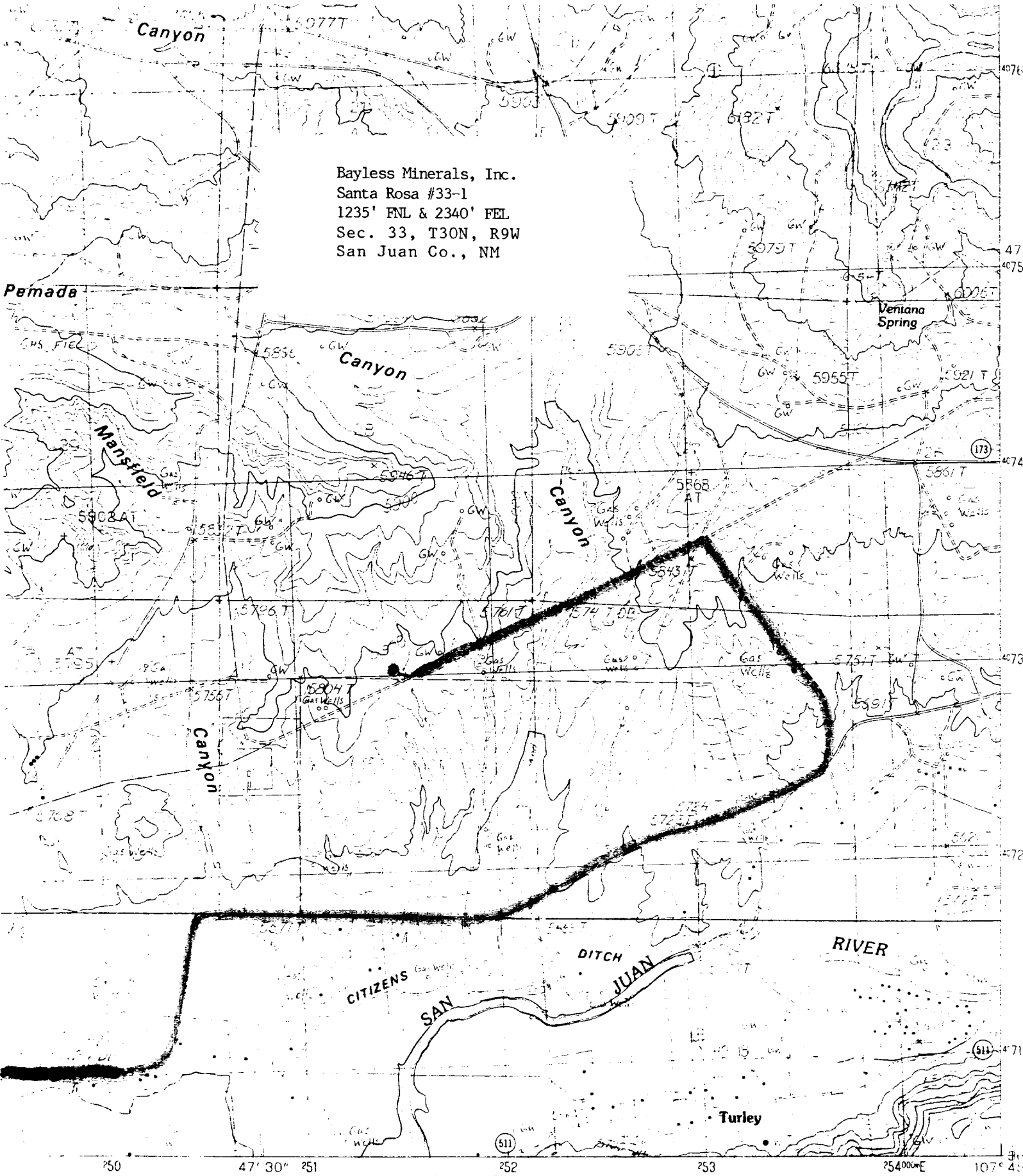
I hereby certify that the information contained herein is true and complete to the best of my knowledge and belief.

Signature
Kevin H. McCord
Printed Name
Kevin H. McCord
Position
Petroleum Engineer
Company
Bayless Minerals, Inc.
Date
6-1-90

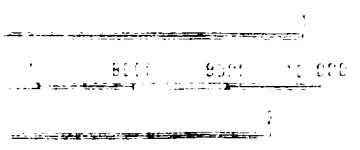
SURVEYOR CERTIFICATION

I hereby certify that the well location shown on this plat was plotted from field notes of actual surveys made by me or under my supervision, and that the same is true and correct to the best of my knowledge and belief.
5-17-90

Date Surveyed
William E. Mahnke II
Signature of Surveyor
WILLIAM E. MAHNKE II
Professional Surveyor
#8466
Certificate No.
8466



Bayless Minerals, Inc.
Santa Rosa #33-1
1235' FNL & 2340' FEL
Sec. 33, T30N, R9W
San Juan Co., NM



ROAD LEGEND
Improved Road
Unimproved Road
Trail