

Submit to Appropriate
District Office
State Leases - 4 copies
Fee Leases - 3 copies

State of New Mexico
Energy, Minerals and Natural Resources Department

Form C-102
Revised 1-1-89

OIL CONSERVATION DIVISION

P.O. Box 2088

Santa Fe, New Mexico 87504-2088

DISTRICT I

P.O. Box 1980, Hobbs, NM 88240

DISTRICT II

P.O. Drawer DD, Artesia, NM 88210

DISTRICT III

1000 Rio Brazos Rd., Aztec, NM 87410

WELL LOCATION AND ACREAGE DEDICATION PLAT

All Distances must be from the outer boundaries of the section

Operator Meridian Oil Inc.			Lease (Fee) Jacquez		Well No. 331
Unit Letter K	Section 6	Township 31 North	Range 8 West	County NMPM San Juan	
Actual Footage Location of Well: 1835 feet from the South line and 1070 feet from the West line					
Ground level Elev. 6179'	Producing Formation Fruitland Coal		Pool Basin	Dedicated Acreage: 332.94 Acres	

1. Outline the acreage dedicated to the subject well by colored pencil or hatchure marks on the plat below.

2. If more than one lease is dedicated to the well, outline each and identify the ownership thereof (both as to working interest and royalty).

3. If more than one lease of different ownership is dedicated to the well, have the interest of all owners been consolidated by communitization, unitization, force-pooling, etc.?

☐ Yes

☐ No

If answer is "yes" type of consolidation

communitization agreement will be

If answer is "no" list the owners and tract descriptions which have actually been consolidated. (Use reverse side of this form if necessary.)

obtained

No allowable will be assigned to the well until all interests have been consolidated (by communitization, unitization, forced-pooling, or otherwise) or until a non-standard unit, eliminating such interest, has been approved by the Division.

RECEIVED

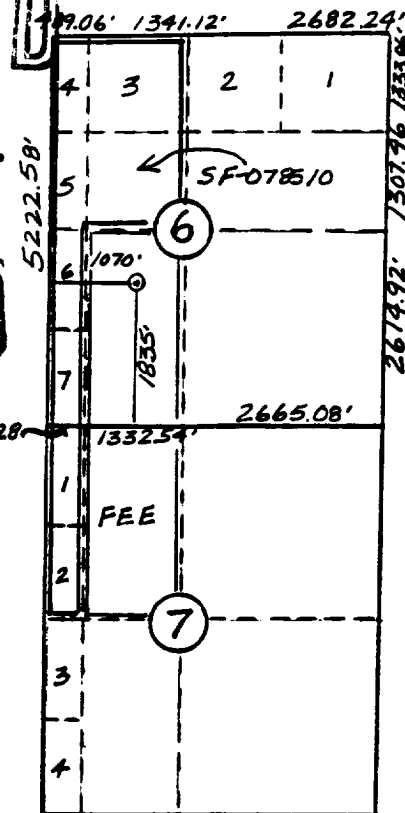
AUG 07 1990

OIL CON. DIV.
DIST. 3

RECEIVED

JUL 25 1990

OIL CON. DIV.
DIST. 3



OPERATOR CERTIFICATION

I hereby certify that the information contained herein is true and complete to the best of my knowledge and belief.

Signature: *Peggy Bradfield*

Printed Name: Peggy Bradfield

Position: Regulatory Affairs

Company: Meridian Oil Inc.

Date: 7-23-90

Date

SURVEYOR CERTIFICATION

I hereby certify that the well location shown on this plat was plotted from field notes of actual surveys made by me or under my supervision, and that the same is true and correct to the best of my knowledge and belief.

7-18-90

Date Surveyed

Signature: *Neale C. Edwards*
Professional Surveyor

NEW MEXICO
REGISTERED LAND SURVEYOR
6857

Certificate No. 6857
Neale C. Edwards