

30-045-28127

UNITED STATES  
DEPARTMENT OF THE INTERIOR  
BUREAU OF LAND MANAGEMENT

APPLICATION FOR PERMIT TO DRILL, DEEPEN, OR PLUG BACK

1a. TYPE OF WORK DRILL	5. LEASE NUMBER SF-078386
1b. TYPE OF WELL GAS	6. IF INDIAN, ALL. OR TRIBE NAME
2. OPERATOR MERIDIAN OIL INC.	7. UNIT AGREEMENT NAME SAN JUAN 32-9 UNIT
3. ADDRESS & PHONE NO. OF OPERATOR P O BOX 4289 FARMINGTON, NM 87499	8. FARM OR LEASE NAME SAN JUAN 32-9 UNIT
4. LOCATION OF WELL 815'FNL 1170'FWL	9. WELL NO. 109
14. DISTANCE IN MILES FROM NEAREST TOWN 18 MILES FROM AZTEC	10. FIELD, POOL, OR WILDCAT UNDESIGNATED PICTURED CLIFFS
15. DISTANCE FROM PROPOSED LOCATION TO NEAREST PROPERTY OR LEASE LINE. 815'	11. SEC. T. R. M OR BLK. D SEC. 15 T31N R09W NMPM
16. ACRES IN LEASE	12. COUNTY SAN JUAN
17. ACRES ASSIGNED TO WELL 157.48	13. STATE NM
18. DISTANCE FROM PROPOSED LOCATION TO NEAREST WELL DR. 800'	19. PROPOSED DEPTH 3685'
20. ROTARY OR CABLE TOOLS ROTARY	
21. ELEVATIONS (DF, FT, GR, ETC.) 6563'GL	22. APPROX. DATE WORK WILL START

23. PROPOSED CASING AND CEMENTING PROGRAM

\*SEE OPERATIONS PLAN

**RECEIVED**

AUG 5 1990

**RECEIVED**

OIL CON. DIV.  
DIST. 3

24. AUTHORIZED BY: [Signature]  
REG. DRILLING ENGR.

AUG 08 1990

7/20/90  
DATE

OIL CON. DIV.  
DIST. 3

PERMIT NO. \_\_\_\_\_ APPROVAL DATE \_\_\_\_\_

APPROVED BY \_\_\_\_\_ TITLE \_\_\_\_\_ DATE \_\_\_\_\_

NOTE: THIS FORMAT IS ISSUED IN LIEU OF US BLM FORM 3160-3.

[Signature]

WOOD

Submit to Appropriate -  
 District Office  
 State Leases - 4 copies -  
 Fee Leases - 3 copies

State of New Mexico  
 Energy, Minerals and Natural Resources Department

Form C-102  
 Revised 4-1-89

**OIL CONSERVATION DIVISION**  
 P.O. Box 2088  
 Santa Fe, New Mexico 87504-2088

**DISTRICT I**  
 P.O. Box 1980, Hobbs, NM 88240

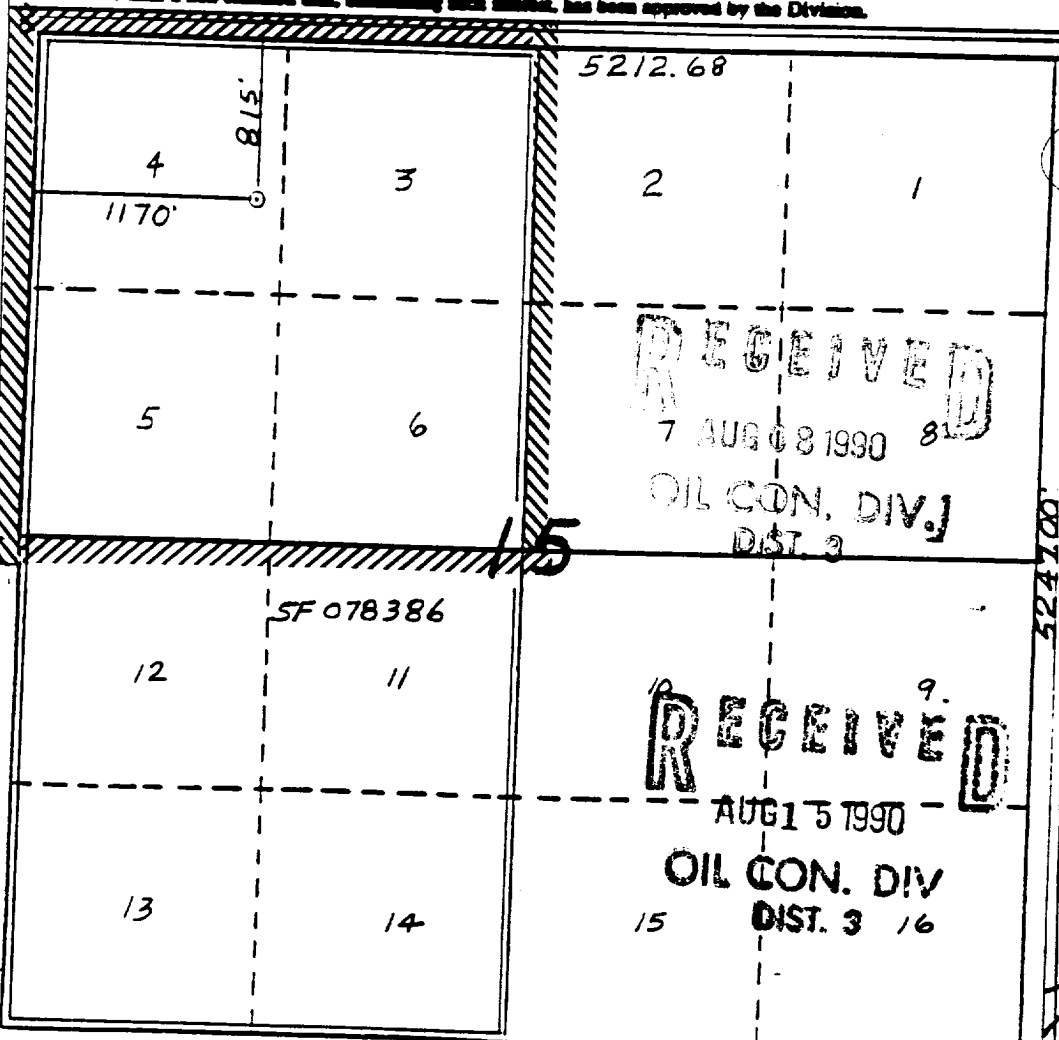
**DISTRICT II**  
 P.O. Drawer DD, Artesa, NM 88210

**DISTRICT III**  
 1000 Rio Brazos RA, Aztec, NM 87410

**WELL LOCATION AND ACREAGE DEDICATION PLAT**  
 All Distances must be from the outer boundaries of the section

Operator <b>Meridian Oil Inc.</b>		Lease <b>San Juan 32-9 Unit</b> (SF-078386)		Well No. <b>#109</b>
Unit Letter <b>D</b>	Section <b>15</b>	Township <b>31 North</b>	Range <b>9 West</b>	County <b>San Juan</b>
Actual Footage Location of Well: <b>815</b> feet from the <b>North</b> line and <b>1170</b> feet from the <b>West</b> line				
Ground level Elev. <b>6563'</b>	Producing Formation <b>Pictured Cliffs</b>	Pool <i>San Juan</i>	Dedicated Acreage <b>157.48</b> Acres	

- Outline the acreage dedicated to the subject well by colored pencil or hatch marks on the plat below.
  - If more than one lease is dedicated to the well, outline each and identify the ownership thereof (both as to working interest and royalty).
  - If more than one lease of different ownership is dedicated to the well, have the interest of all owners been consolidated by communitization, unitization, force-pooling, etc.?
    - Yes  No
    - If answer is "yes" type of consolidation unitization
- If answer is "no" list the owners and tract descriptions which have actually been consolidated. (Use reverse side of this form if necessary.)
- No allowable will be assigned to the well until all interests have been consolidated (by communitization, unitization, force-pooling, or otherwise) or until a non-consolidated unit, eliminating such interest, has been approved by the Division.



**OPERATOR CERTIFICATION**

I hereby certify that the information contained herein is true and complete to the best of my knowledge and belief.

*Peggy Bradford*  
 Signature  
**Peggy Bradford**  
 Printed Name  
 Regulatory Affairs  
 Position  
**Meridian Oil Inc.**  
 Company  
**8-13-90**  
 Date

**SURVEYOR CERTIFICATION**

I hereby certify that the well location shown on this plat was plotted from field notes of actual surveys made by me or under my supervision, and that the same is true and correct to the best of my knowledge and belief.

**4-19-90**  
 Date Surveyed  
**Neal B. Edwards**  
 Signature  
 Professional Surveyor  
 New Mexico  
**6857**  
 License Number

Well Name: 109 SAN JUAN 32-9 UNIT  
Sec. 15 T31N R09W  
UNDESIGNATED PICTURED CLIFFS

815'FNL 1170'FWL  
SAN JUAN NEW MEXICO  
Elevation 6563'GL

Formation tops: Surface- SAN JOSE  
Ojo Alamo- 2140  
Kirtland- 2196  
Fruitland- 2990  
Fruitland Coal Base- 3416  
Pictured Cliffs- 3420

Total Depth- 3685

Logging Program: Mud logs from 2990 to total depth.

Mud Program:	Interval	Type	Weight	Visc.	Fl. Loss
	0 - 200	Spud	8.4 - 8.9	40-50	no control
	200 - 3685	Non-dispersed	8.4 - 9.5	30-60	no control

Casing Program:	Hole Size	Depth Interval	Csg. Size	Weight	Grade
	12 1/4"	0 - 200	8 5/8"	24.0#	K-40
	7 7/8"	0 - 3685	4 1/2"	10.0#	K-55
Tubing Program:		0 - 3685	2 3/8"	4.7#	J-55

Float Equipment: 8 5/8" surface casing - saw tooth guide shoe. Centralizers will be run in accordance with Onshore Order #2.

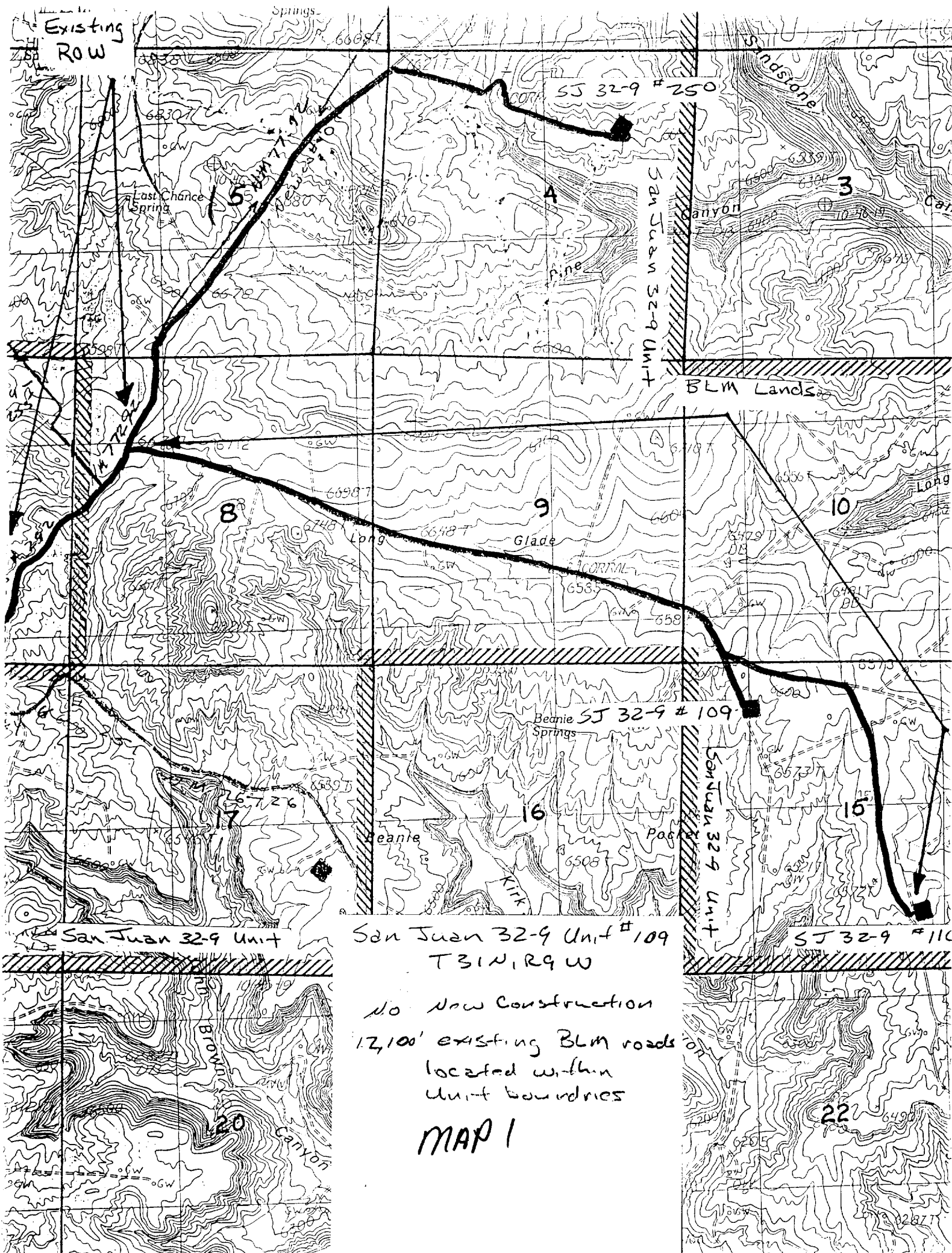
4 1/2" production casing - float shoe on bottom. Three centralizers run every other joint above shoe. Two turbolizing type centralizers - one below and one into the base of the Ojo Alamo @ 2196'. Standard centralizers thereafter every fourth joint up to the base of the surface pipe.

Wellhead Equipment: 8 5/8" x 4 1/2" x 2 3/8" x 11" 3000 psi xmas tree assembl

Cementing:

8 5/8" surface casing - cement with 211 sacks of class "B" cement with 1/4# flocele/sack and 3% calcium chloride (248 cu ft. of slurry, 200% excess to circulate to surface). WOC 12 hours. Test casing to 600 psi for 30 minutes.

4 1/2" production casing - lead with 812 sacks of 65/35 class "B" poz with 6% gel, 2% calcium chloride and 1/2 cu.ft. Perlite/sack (10.3 gallons of water/sack) tail with 100 sacks of class "B" with 2% calcium chloride. 1685 cu ft. of slurry, 100% excess to circulate to surface. If hole conditions permit, a 600 ft spacer will be run ahead of the cement slurry to avoid mud contamination of the cement. WOC 12 hours. If cement does not circulate to surface, a temperature log will be run after 8 hours to determine TOC.



San Juan 32-9 Unit # 109  
 T31N, R9W

No New Construction  
 12,100' existing BLM roads  
 located within  
 unit boundaries

MAP 1