

UNITED STATES
DEPARTMENT OF THE INTERIOR
BUREAU OF LAND MANAGEMENT

APPLICATION FOR PERMIT TO DRILL, DEEPEN, OR PLUG BACK

1a. TYPE OF WORK

DRILL ☒

DEEPEN ☐

PLUG BACK ☐

b. TYPE OF WELL

OIL
WELL ☐

GAS
WELL ☒

OTHER

SINGLE
ZONE ☒

MULTIPLE
ZONE ☐

2. NAME OF OPERATOR

MESA OPERATING LIMITED PARTNERSHIP

3. ADDRESS OF OPERATOR

P.O. BOX 2009, AMARILLO, TEXAS 79189

4. LOCATION OF WELL (Report location clearly and in accordance with any State requirements.)

At surface

2410' FSL & 1700' FWL

At proposed prod. zone

14. DISTANCE IN MILES AND DIRECTION FROM NEAREST TOWN OR POST OFFICE*

4 miles SE from Aztec, New Mexico

10. DISTANCE FROM PROPOSED*

LOCATION TO NEAREST
PROPERTY OR LEASE LINE, FT.
(Also to nearest drlg. unit line, if any)

230'

16. NO. OF ACRES IN LEASE

~~319.26~~ 319.26

17. NO. OF ACRES ASSIGNED
TO THIS WELL

W/2 321.48

18. DISTANCE FROM PROPOSED LOCATION*
TO NEAREST WELL, DRILLING, COMPLETED,
OR APPLIED FOR, ON THIS LEASE, FT.

1700'

19. PROPOSED DEPTH

2620'

20. ROTARY OR CABLE TOOLS

Rotary

21. ELEVATIONS (Show whether DF, RT, GR, etc.) This action is subject to technical and

6071' GR

procedural review pursuant to 43 CFR 3165.3

and appeal pursuant to 43 CFR 3165.4

PROPOSED CASING AND CEMENTING PROGRAM

DRILLING OPERATIONS AUTHORIZED ARE

SUBJECT TO COMPLIANCE WITH ATTACHED

"GENERAL REQUIREMENTS"

SIZE OF HOLE	SIZE OF CASING	WEIGHT PER FOOT	SETTING DEPTH	
12 1/4"	8 5/8"	24#	200'	150 sx "B" + 2% CaCl (Surface)
7 7/8"	5 1/2"	17#	2620'	300 Poz/250 "B" (Surface)

Propose to spud well with 12 1/4" hole and drill to 200' and set 8 5/8" surface casing. Will cement with 150 sx of Class "B" and raise cement to surface. Will nipple up 2000 psi BOP assembly and drill 7 7/8" hole to TD of + 2620' with fresh water mud system. Will then log well and evaluate for possible commercial production. If successful, will then run 5 1/2" casing to + 2620' and cement with 300 sx Pozmix followed by 250 sx Class "B" cement. Will move off drilling rig and move in completion unit.

xc: BLM-Farmington (0+5), NMOCD-Aztec (1), WF, Reg, Land, Expl., Drilling
IN ABOVE SPACE DESCRIBE PROPOSED PROGRAM: If proposal is to deepen or plug back, give data on present productive zone and proposed new productive zone. If proposal is to drill or deepen directionally, give pertinent data on subsurface locations and measured and true vertical depths. Give blowout preventer program if any.

24.

SIGNED

Catalyn L. McKee

TITLE Regulatory Analyst

DATE 5/31/90

(This space is for Federal or State use only)

PERMIT NO.

RECEIVED

APPROVED BY

CONDITIONS OF APPROVAL, IF ANY:

OIL CON. DIV.
DIST. 3

"Approval of this action does

not warrant that the applicant

holds legal or equitable rights

or title to this lease."

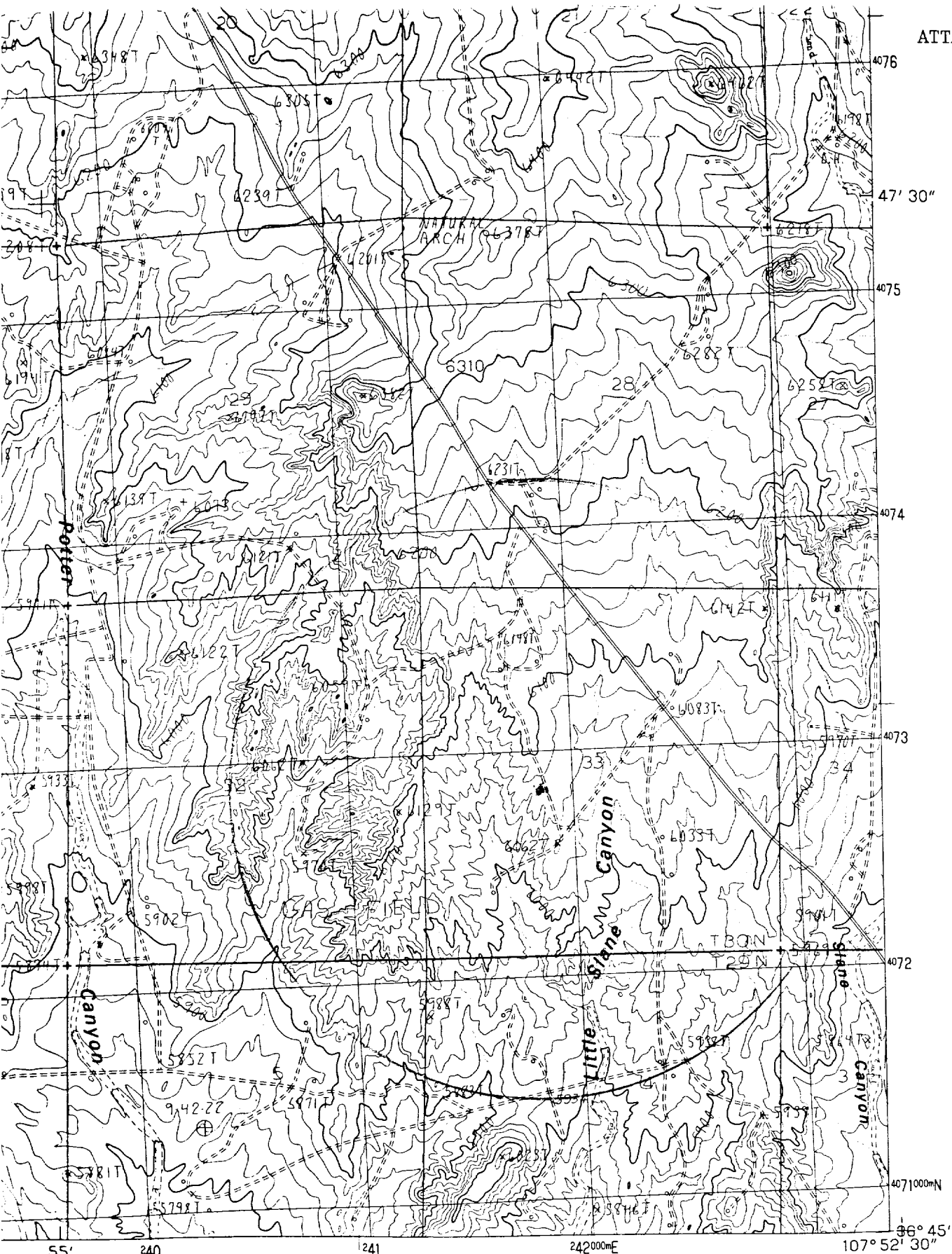
DATE

Ken Townsend

NMOCD

FOR

*See Instructions On Reverse Side



INTERIOR-GEOLOGICAL SURVEY, RESTON, VIRGINIA-1985



ROAD LEGEND

Improved Road
 Unimproved Road
 Trail

○ Interstate Route ○ U.S. Route ○ State Route

1	2	3	1 Adobe Downs Ranch
			2 Cedar Hill
			3 Mount Nebo
			4 Mount Nebo