

Submit to Appropriate
District Office
State Lease - 6 copies
Fee Lease - 5 copies

State of New Mexico
Energy, Minerals and Natural Resources Department

Form C-101
Revised 1-1-89

OIL CONSERVATION DIVISION

Santa Fe, New Mexico 87504-2088

AUG 21 1990

OIL CON. DIV.
DIST. 3

DISTRICT I
P.O. Box 1980, Hobbs, NM 88240
DISTRICT II
P.O. Drawer DD, Artesia, NM 88210
DISTRICT III
1000 Rio Brazos Rd., Aztec, NM 87410

API NO. (assigned by OCD on New Wells)
30-045-28161
5. Indicate Type of Lease
STATE ☐ FEE ☒
6. State Oil & Gas Lease No.

APPLICATION FOR PERMIT TO DRILL, DEEPEN OR PLUG BACK
1a. Type of Work: DRILL ☒ RE-ENTER ☐ DEEPEN ☐ PLUG BACK ☐
b. Type of Well: OIL WELL ☐ GAS WELL ☒ OTHER ☐ SINGLE ZONE ☒ MULTIPLE ZONE ☐
2. Name of Operator
Robert L. Bayless
3. Address of Operator
P.O. Box 168, Farmington, NM 87499
4. Well Location
Unit Letter N : 860 Feet From The South Line and 1785 Feet From The West Line
Section 33 Township 30N Range 9W NMPM San Juan County NM

10. Proposed Depth
2400'
11. Formation
Fruitland Coal
12. Rotary or C.T.
Rotary
13. Elevations (Show whether DF, RT, GR, etc.)
5689' GL 5699' RKB
14. Kind & Status Plug. Bond
15. Drilling Contractor
Bayless Drilling
16. Approx. Date Work will start
ASAP

17. PROPOSED CASING AND CEMENT PROGRAM					
SIZE OF HOLE	SIZE OF CASING	WEIGHT PER FOOT	SETTING DEPTH	SACKS OF CEMENT	EST. TOP
12-1/4"	8-5/8"	24.0#	120'	90/106 ft ³	surface
7-7/8"	4-1/2"	10.5#	2400'	500/729 ft ³	surface/see long-string cementing

guidelines for detail:
Will drill 12-1/4" hole to 120' and set 120' of 8-5/8" 24.0 #/ft J-55 used casing, cementing with 106 ft³ Class B cement, circulated to surface. Will drill 7-7/8" hole to 2400' and run 2400' of 4-1/2" 10.5 #/ft J-55 new casing and cement as per attached longstring cementing guidelines. Circulating medium while drilling will be clear water, natural mud and waterloss control additives. No abnormal pressures or temperatures are anticipated. Will run Induction and Density Logs. Blowout preventer and safety equipment schematics are attached. The gas from this formation is not dedicated to a gas contract.

ESTIMATED TOPS: Ojo Alamo - 1120'
Kirtland - 1260'
Fruitland - 1990'
Pictured Cliffs - 2317'
Total Depth - 2400'

IN ABOVE SPACE DESCRIBE PROPOSED PROGRAM: IF PROPOSAL IS TO DEEPEN OR PLUG BACK, GIVE DATA ON PRESENT PRODUCTIVE ZONE AND PROPOSED NEW PRODUCTIVE ZONE. GIVE BLOWOUT PREVENTER PROGRAM, IF ANY.

I hereby certify that the information above is true and accurate to the best of my knowledge and belief.

SIGNATURE Kevin H. McCord TITLE Petroleum Engineer DATE 8-17-90
TYPE OR PRINT NAME: Kevin H. McCord TELEPHONE NO 505-326-2650

(This space for State Use)

APPROVED BY Kevin H. McCord
CONDITIONS OF APPROVAL, IF ANY

DEPUTY OIL & GAS INSPECTOR, DIST. #3

DATE AUG 22 1990

APPROVAL EXPIRES 2-22-91
UNLESS DRILLING IS COMMENCED.
SPUD NOTICE MUST BE SUBMITTED
WITHIN 10 DAYS.

OIL CONSERVATION DIVISION

DISTRICT I
P.O. Box 1980, Hobbs, NM 88240

P.O. Box 2088
Santa Fe, New Mexico 87504-2088

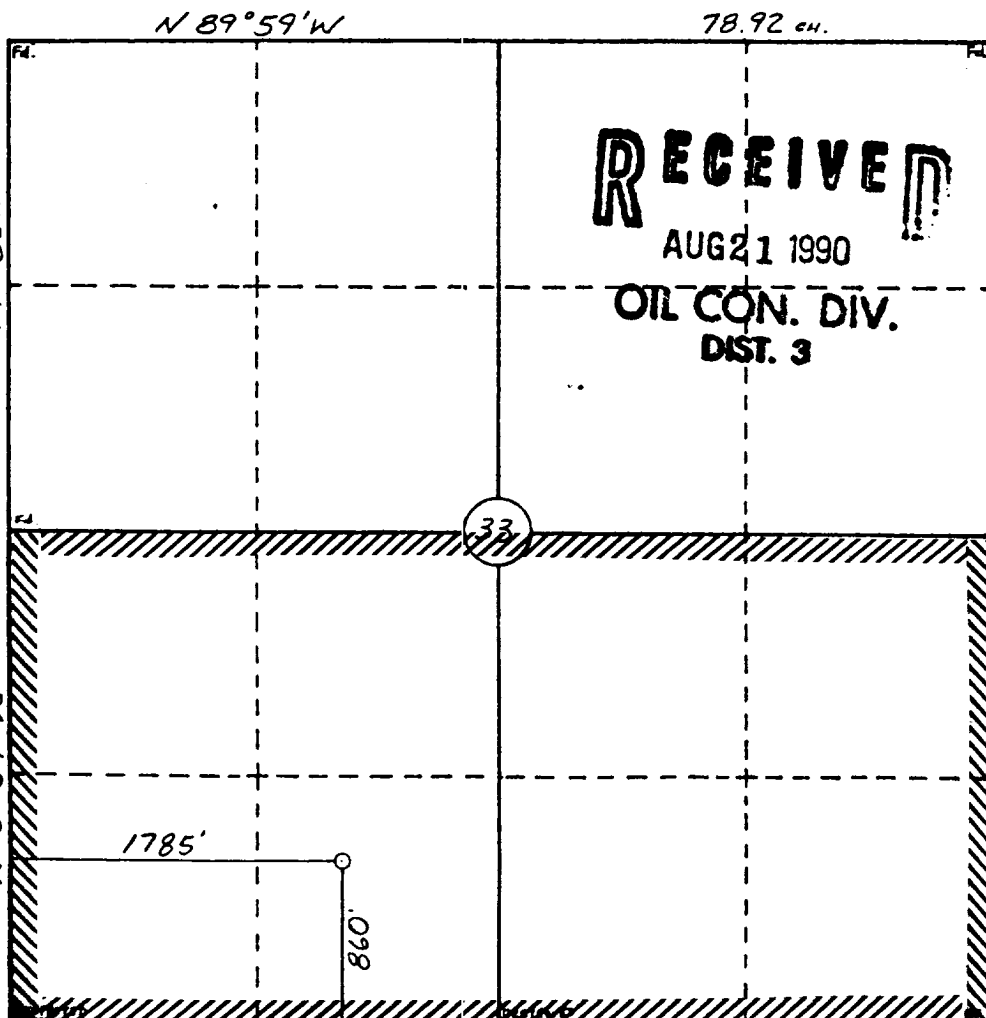
DISTRICT II
P.O. Drawer DD, Artesia, NM 88210

DISTRICT III
1000 Rio Brazos Rd., Aztec, NM 87410

WELL LOCATION AND ACREAGE DEDICATION PLAT

All Distances must be from the outer boundaries of the section

Operator Robert L. Bayless				Lease SANTA ROSA 33				Well No. 33-2			
Unit Letter N		Section 33		Township 30 N		Range 9 W		County San Juan			
Actual Footage Location of Well: 960 feet from the South line and 1785 feet from the West line											
Ground level Elev. 5689		Producing Formation Fruitland				Pool Basin Fruitland Coal				Dedicated Acreage: 320 Acres	
<p>1. Outline the acreage dedicated to the subject well by colored pencil or hatchure marks on the plat below.</p> <p>2. If more than one lease is dedicated to the well, outline each and identify the ownership thereof (both as to working interest and royalty).</p> <p>3. If more than one lease of different ownership is dedicated to the well, have the interest of all owners been consolidated by communitization, unitization, force-pooling, etc? <input type="checkbox"/> Yes <input type="checkbox"/> No If answer is "yes" type of consolidation _____</p> <p>If answer is "no" list the owners and tract descriptions which have actually been consolidated. (Use reverse side of this form if necessary). _____</p> <p>No allowable will be assigned to the well until all interests have been consolidated (by communitization, unitization, forced-pooling, or otherwise) or until a non-standard unit, eliminating such interest, has been approved by the Division.</p>											
0 330 660 990 1320 1650 1980 2310 2640 2000 1500 1000 500 0											



OPERATOR CERTIFICATION

I hereby certify that the information contained herein is true and complete to the best of my knowledge and belief.

Signature _____

Printed Name _____

Kevin H. McCord

Position

Petroleum Engineer

Company

Robert L. Bayless

Date _____

June 6, 1990

SURVEYOR CERTIFICATION

I hereby certify that the well location shown on this plat was plotted from field notes of actual surveys made by me or under my supervision, and that the same is true and correct to the best of my knowledge and belief.

5-4-90

Date Surveyed _____

~~William F. Mahnke II~~

Signature & Seal of Professional Surveyor

11/11/11

3

RE

15

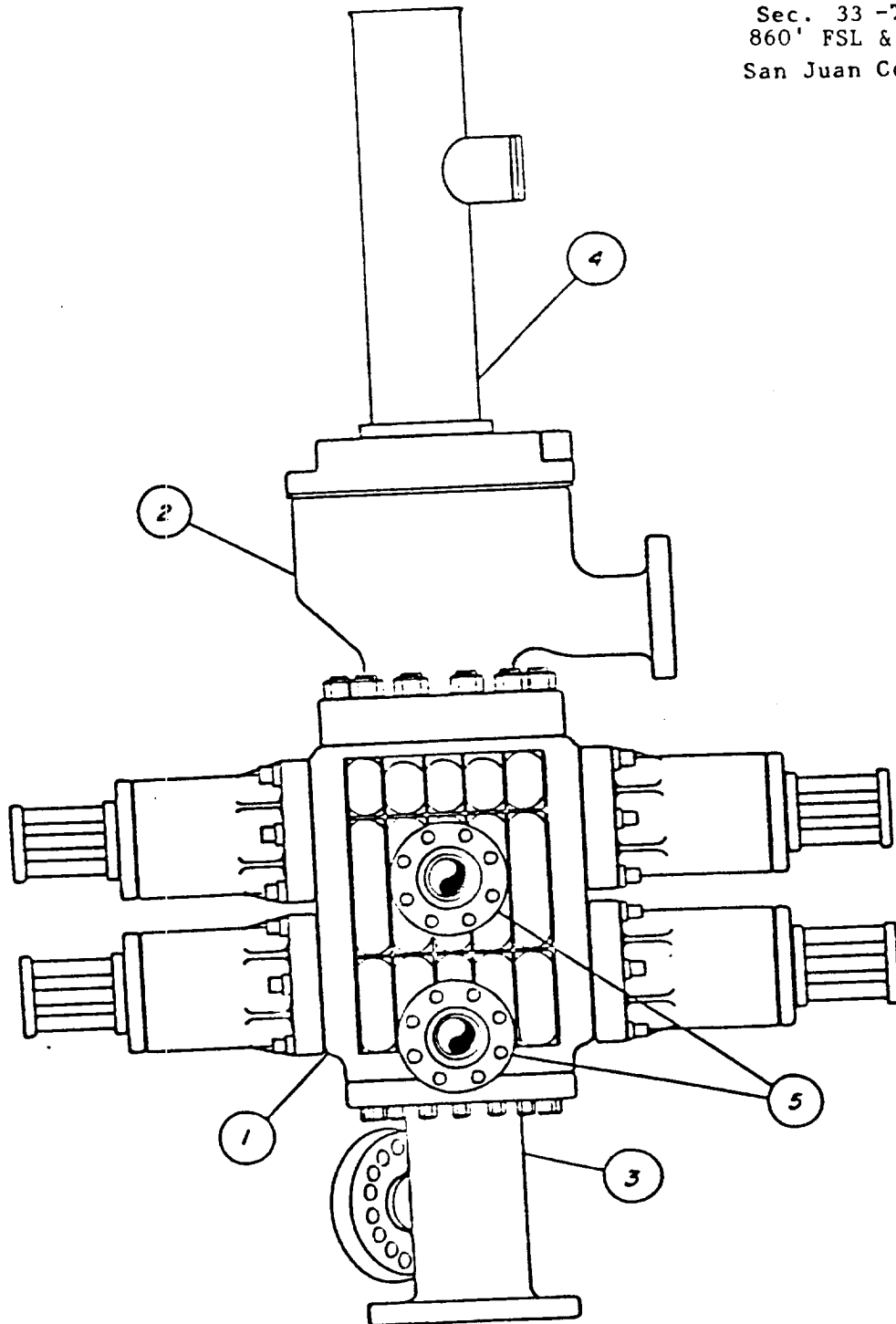
合

~~Confidential No~~

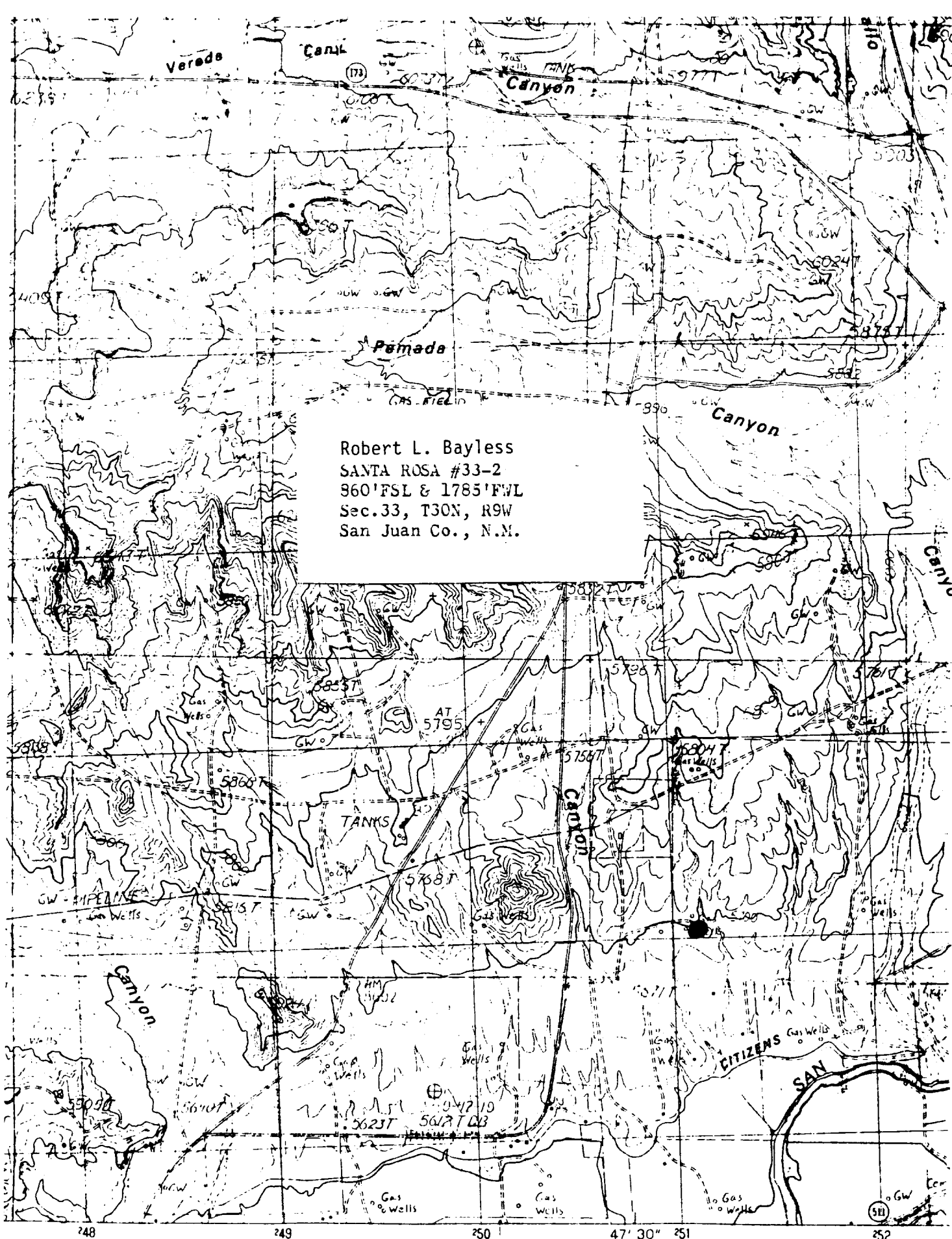
PROFESS

1

Robert L. Bavless
 Santa Rosa 33-2
 Sec. 33 -T30 N-R9 W
 860' FSL & 1785' FWL
 San Juan County, NM



- ① SHAFER 11" 3000 LB MODEL LWS MANUAL LOCK RAM BLOWOUT PREVENTER
- ② GRANT 11" 3000 LB ROTATING DRILL HEAD, if conditions warrant, otherwise flow nipple above BOP
- ③ 11" SPOOL
- ④ 11" FLOW NIPPLE
- ⑤ 4" 3000 LB NOZZLE



Robert L. Bayless
SANTA ROSA #33-2
960' FSL & 1785' FWL
Sec. 33, T30N, R9W
San Juan Co., N.M.

SCALE 1:24 000

