

**UNITED STATES
DEPARTMENT OF THE INTERIOR
BUREAU OF LAND MANAGEMENT**

30-045-28223

APPLICATION FOR PERMIT TO DRILL, DEEPEN, OR PLUG BACK

1a. TYPE OF WORK
 DRILL DEEPEN PLUG BACK

b. TYPE OF WELL
 OIL WELL GAS WELL OTHER SINGLE ZONE MULTIPLE ZONE

2. NAME OF OPERATOR
 Phillips Petroleum Company

3. ADDRESS OF OPERATOR
 300 W. Arrington, Suite 200, Farmington, N.M. 87401

4. LOCATION OF WELL (Report location clearly and in accordance with any State requirements.)
 At surface Unit L, 1445' FSL & 820' FWL
 At proposed prod. zone Unit L, 1445' FSL & 820' FWL

14. DISTANCE IN MILES AND DIRECTION FROM NEAREST TOWN OR POST OFFICE*

5. LEASE DESIGNATION AND SERIAL NO.
 SF-080854

6. INDIAN, ALLOTTEE OR TRIBE NAME

7. UNIT AGREEMENT NAME
 San Juan 32-8 Unit

8. FARM OR LEASE NAME

9. WELL NO.
 220

10. FIELD AND POOL, OR WILDCAT
 Basin Fruitland Coal Gas

11. SEC., T., R., M., OR B.L.K. AND SURVEY OR AREA
 Sec. 24, T-31-N, R- 8-W

12. COUNTY OR PARISH | 18. STATE
 San Juan | NM

15. DISTANCE FROM PROPOSED LOCATION TO NEAREST PROPERTY OR LEASE LINE, FT. (Also to nearest drig. unit line, if any) 820' FWL

16. NO. OF ACRES IN LEASE
 960 Ac

17. NO. OF ACRES ASSIGNED TO THIS WELL
 31 Ac W/2 of Section 320

18. DISTANCE FROM PROPOSED LOCATION TO NEAREST WELL, DRILLING, COMPLETED, OR APPLIED FOR, ON THIS LEASE, FT. 256' from #15

19. PROPOSED DEPTH
 3329'

20. ROTARY OR CABLE TOOLS
 Rotary

21. ELEVATIONS (Show whether DF, RT, GR, etc.)
 6455' (GL Unprepared)

22. APPROX. DATE WORK WILL START*
 Upon Approval

PROPOSED CASING AND CEMENTING PROGRAM

DRILLING OPERATIONS AUTHORIZED ARE SUBJECT TO COMPLIANCE WITH ATTACHED "GENERAL REQUIREMENTS"

SIZE OF HOLE	SIZE OF CASING	WEIGHT PER FOOT	SETTING DEPTH	GENERAL REQUIREMENTS
12-1/4"	9-5/8"	36#, K-55	250'	250' sxs, Circ to Surface
8-3/4"	7"	23#, K-55	3211'	650 sxs, Circ to Surface
6-1/8"	5-1/2"	15.5# or 23#	3111'-3329'	*

*If the coal is cleated a 5-1/2", 23#, P-110 liner will be run in the open hole without being cemented.

*If the coal is not cleated the well will be stimulated and a 5-1/2", 15.5#, J-55 liner will be run without being cemented.

RECEIVED
 SEP 11 1990
 OIL CON. DIV.
 DIST. 3

Mud Program and BOP Equipment: See Attached

IN ABOVE SPACE DESCRIBE PROPOSED PROGRAM: If proposal is to deepen or plug back, give data on present productive zone and proposed new productive zone. If proposal is to drill or deepen directionally, give pertinent data on subsurface locations and measured and true vertical depths. Give blowout preventer program, if any.

24. SIGNED *L.M. Sanders* TITLE Supv. Regulatory Affairs DATE 6/1/90

(This space for Federal or State office use)

PERMIT NO. _____ APPROVAL DATE _____

APPROVED BY _____ TITLE _____ DATE AUG 28 1990

CONDITIONS OF APPROVAL, IF ANY:

NMOCD

AREA MANAGER

Submit to Appropriate District Office
State Lease - 4 copies
Fee Lease - 3 copies

State of New Mexico
Energy, Minerals and Natural Resources Department

Form C-102
Revised 1-1-89

OIL CONSERVATION DIVISION

P.O. Box 2088
Santa Fe, New Mexico 87504-2088

DISTRICT I
P.O. Box 1980, Hobbs, NM 88240

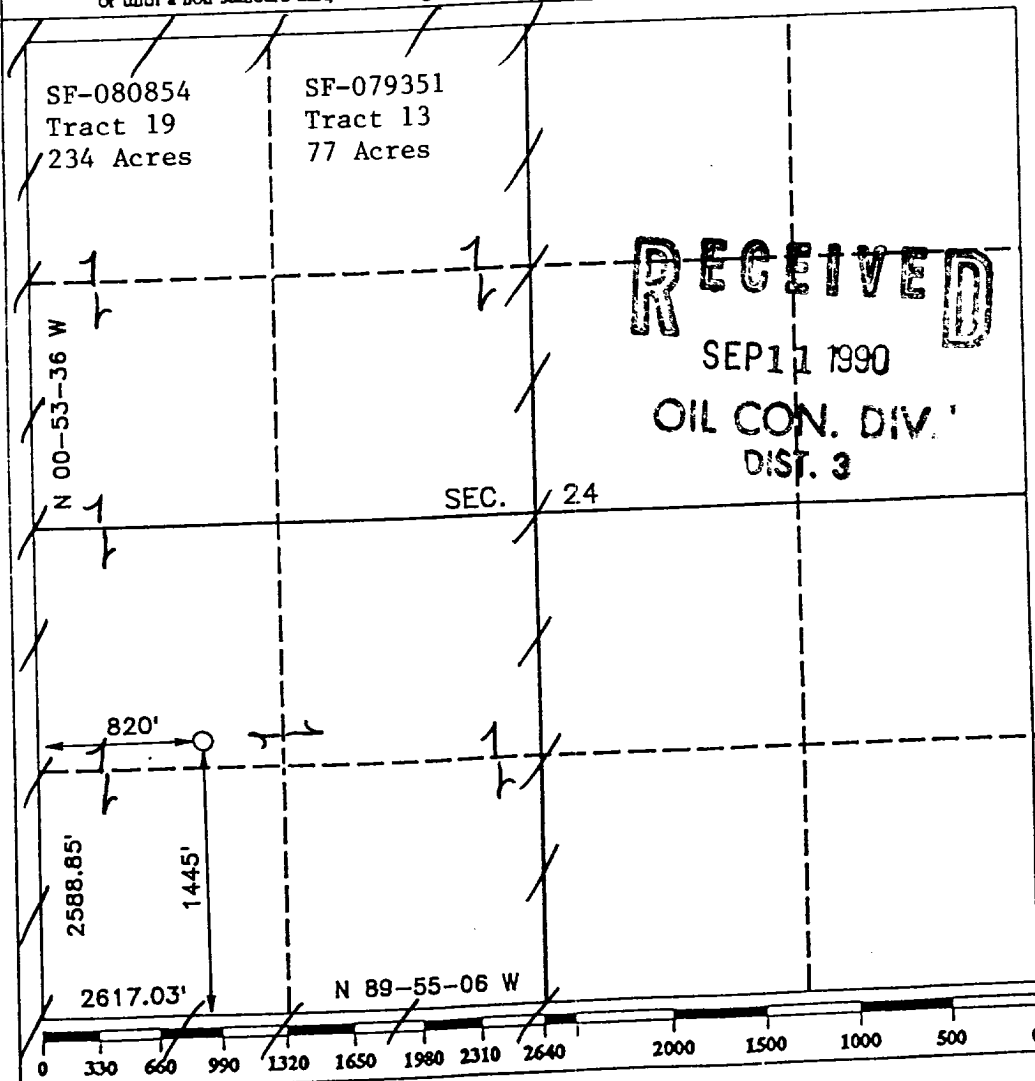
DISTRICT II
P.O. Drawer DD, Artesia, NM 88210

DISTRICT III
1000 Rio Brazos Rd., Aztec, NM 87410

WELL LOCATION AND ACREAGE DEDICATION PLAT
All Distances must be from the outer boundaries of the section

Operator PHILLIPS PETROLEUM		Lease SAN JUAN 32-8 UNIT		Well No. 220
Unit Letter L	Section 24	Township T.31 N.	Range R.8 W. NMPM	County SAN JUAN COUNTY
Actual Footage Location of Well: 1445 feet from the SOUTH line and 820 feet from the WEST line				
Ground level Elev. 6455	Producing Formation Fruitland		Pool Basin Fruitland Coal	Dedicated Acreage: 311 52 Acres

- Outline the acreage dedicated to the subject well by colored pencil or hachure marks on the plat below.
- If more than one lease is dedicated to the well, outline each and identify the ownership thereof (both as to working interest and royalty).
- If more than one lease of different ownership is dedicated to the well, have the interest of all owners been consolidated by communitization, unitization, force-pooling, etc.?
 Yes No If answer is "yes" type of consolidation Unitization
 If answer is "no" list the owners and tract descriptions which have actually been consolidated. (Use reverse side of this form if necessary.)
 No allowable will be assigned to the well until all interests have been consolidated (by communitization, unitization, forced-pooling, or otherwise) or until a non-standard unit, eliminating such interest, has been approved by the Division.

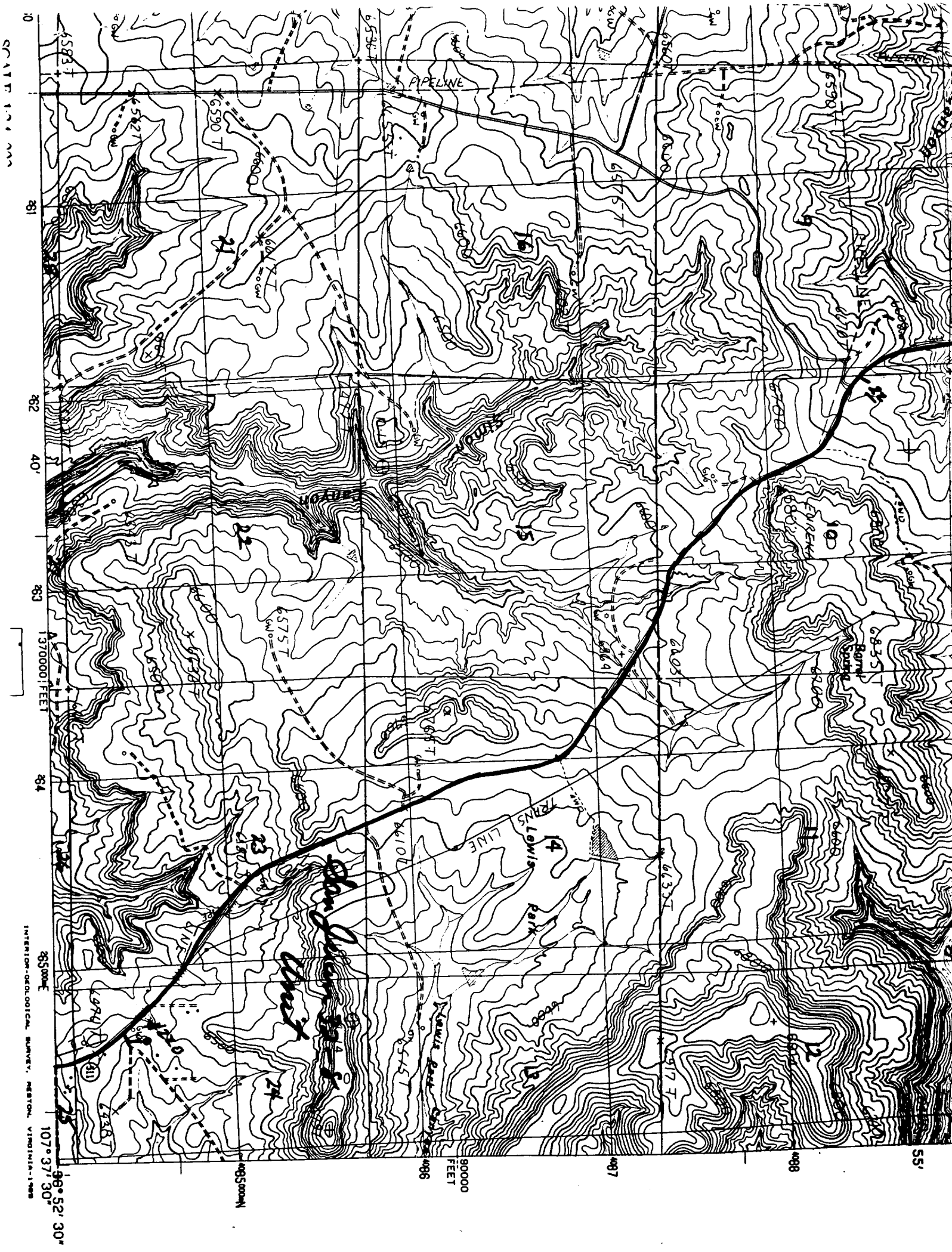


OPERATOR CERTIFICATION
I hereby certify that the information contained herein is true and complete to the best of my knowledge and belief.

Signature: *L. M. Sanders*
Printed Name: **L. M. Sanders**
Position: **Supv. Regulatory Affairs**
Company: **Phillips Petroleum Co.**
Date: **6/1/90**

SURVEYOR CERTIFICATION
I hereby certify that the well location shown on this plat was plotted from field notes of actual surveys made by me or under my supervision, and that the same is true and correct to the best of my knowledge and belief.

Date Surveyed: **APR 17 1990**
Signature & Seal of Professional Surveyor: *R. Howard Daggett*
Certificate No.: **9679**
Registered Professional Land Surveyor



SCALE 1:370,000

881
882
883
884
1:370,000 FEET

850000
855000
107° 37' 30"

INTERIOR GEOLOGICAL SURVEY, RESTON, VIRGINIA-1988

PIPELINE

TRANS LUISIANA LINE

Park

Handwritten: 4
13

80000 FEET

485000

487

488

855

6590 T

6590 T

6575 T

6505 T

6530 T

6535 T

6500 T

6500 T

6500 T

6500 T

6583 T

6582 T

6581 T

6580 T

6579 T

6578 T

6577 T

6576 T

6575 T

6574 T

6573 T

6572 T

6600 T

6600 T

6600 T

6600 T

6600 T

6600 T

6600 T

6600 T

6600 T

6600 T

6600 T

6600 T

6600 T

6600 T

6600 T

6600 T

6600 T

6600 T

6600 T

6600 T

6600 T

6600 T

6600 T

6600 T

6600 T

6600 T

6600 T

6600 T

6600 T

6600 T

6600 T

6600 T

6600 T

6600 T

6600 T

6600 T

6600 T

6600 T

6600 T

6600 T

6600 T

6600 T

6600 T

6600 T

6600 T

6600 T

6600 T

6600 T

6600 T

6600 T

6600 T

6600 T

6600 T

6600 T

6600 T

6600 T

6600 T

6600 T

6600 T

6600 T

6600 T

6600 T

6600 T

6600 T

6600 T

6600 T

6600 T

6600 T

6600 T

6600 T

6600 T

6600 T

6600 T

6600 T

6600 T

6600 T

6600 T

6600 T

6600 T

6600 T

6600 T

6600 T

6600 T

6600 T

6600 T

6600 T

6600 T

6600 T

6600 T

6600 T

6600 T

6600 T

6600 T

6600 T

6600 T

6600 T

6600 T

6600 T

6600 T

6600 T

6600 T

6600 T

6600 T

6600 T

6600 T

6600 T

6600 T

6600 T

6600 T

6600 T

6600 T

6600 T

6600 T

6600 T

6600 T

6600 T

6600 T

6600 T

6600 T

6600 T

6600 T

6600 T

6600 T

6600 T

6600 T

6600 T

6600 T

6600 T

6600 T

6600 T

6600 T

6600 T

6600 T

6600 T

6600 T

6600 T

6600 T

6600 T

6600 T

6600 T

6600 T

6600 T

6600 T

6600 T

6600 T

6600 T

6600 T

6600 T

6600 T

6600 T

6600 T

6600 T

6600 T

6600 T

6600 T

6600 T

6600 T

6600 T

6600 T

6600 T

6600 T

6600 T

6600 T

6600 T

6600 T

6600 T

6600 T

6600 T

6600 T

6600 T

6600 T

6600 T

6600 T

6600 T

6600 T

6600 T

6600 T

6600 T

6600 T

6600 T

6600 T

6600 T

6600 T

6600 T

6600 T

6600 T

6600 T

6600 T

6600 T

6600 T

6600 T

6600 T

6600 T

6600 T

6600 T

6600 T

6600 T

6600 T

6600 T

6600 T

6600 T

6600 T

6600 T

6600 T

6600 T

6600 T

6600 T

6600 T

6600 T

6600 T

6600 T

6600 T

6600 T

6600 T

6600 T

6600 T

6600 T

6600 T

6600 T

6600 T

6600 T

6600 T

6600 T

6600 T

6600 T

6600 T

6600 T

6600 T

6600 T

6600 T

6600 T

6600 T

6600 T

6600 T

6600 T

6600 T

6600 T

6600 T

6600 T

6600 T

6600 T

6600 T

6600 T

6600 T

6600 T

6600 T

6600 T

6600 T

6600 T

6600 T

6600 T

6600 T

6600 T

6600 T

6600 T

6600 T

6600 T

6600 T

6600 T

6600 T

6600 T

6600 T

6600 T

6600 T

6600 T

6600 T

6600 T

6600 T

6600 T

6600 T

6600 T

6600 T

6600 T

6600 T

6600 T

6600 T

6600 T