

UNITED STATES  
DEPARTMENT OF THE INTERIOR  
BUREAU OF LAND MANAGEMENT

30-045-28224  
APPLICATION FOR PERMIT TO DRILL, DEEPEN, OR PLUG BACK

1a. TYPE OF WORK DRILL	5. LEASE NUMBER SF-078438
1b. TYPE OF WELL GAS	6. IF INDIAN, ALL. OR TRIBE NAME
2. OPERATOR MERIDIAN OIL INC.	7. UNIT AGREEMENT NAME SAN JUAN 32-9 UNIT
3. ADDRESS & PHONE NO. OF OPERATOR P O BOX 4289 FARMINGTON, NM 87499	8. FARM OR LEASE NAME SAN JUAN 32-9 UNIT
4. LOCATION OF WELL 1295' FSL 1435' FWL	9. WELL NO. 257
10. FIELD, POOL, OR WILDCAT BASIN FRUITLAND COAL	11. SEC. T. R. M OR BLK. SEC. 8 T31N R09W NMPM
14. DISTANCE IN MILES FROM NEAREST TOWN 13 MILES N/E OF AZTEC	12. COUNTY SAN JUAN
	13. STATE NM
15. DISTANCE FROM PROPOSED LOCATION 1295' TO NEAREST PROPERTY OR LEASE LINE.	16. ACRES IN LEASE 1154.59
	17. ACRES ASSIGNED TO WELL w/ 309.37
18. DISTANCE FROM PROPOSED LOCATION TO NEAREST WELL DR. 450' COMPL., OR APPLIED FOR ON THIS LEASE.	19. PROPOSED DEPTH 3483'
	20. ROTARY OR CABLE TOOLS ROTARY
21. ELEVATIONS (DF, FT, GR, ETC.) 6640' GL	22. APPROX. DATE WORK WILL START

23. PROPOSED CASING AND CEMENTING PROGRAM

\*SEE OPERATIONS PLAN

RECEIVED

24. AUTHORIZED BY: Chad J. Inc. SEP 11 1990  
REG. DRILLING ENGR OIL CON. DI DATE 8/22/90  
DIST. 2

PERMIT NO. \_\_\_\_\_ APPROVAL DATE \_\_\_\_\_

APPROVED BY \_\_\_\_\_ TITLE \_\_\_\_\_ DATE \_\_\_\_\_

NOTE: THIS FORMAT IS ISSUED IN LIEU OF US BLM FORM 3160-3.

Held c-104 for change of #105 well to E2  
NMOCD

Submit to Appropriate  
District Office  
State Lease - 4 copies  
Fee Lease - 3 copies

State of New Mexico  
Energy, Minerals and Natural Resources Department

Form C-102  
Revised 1-1-89

OIL CONSERVATION DIVISION

DISTRICT I  
P.O. Box 1980, Hobbs, NM 88240

P.O. Box 2088  
Santa Fe, New Mexico 87504-2088

DISTRICT II  
P.O. Drawer DD, Artesia, NM 88210

DISTRICT III  
1000 Rio Brazos Rd., Aztec, NM 87410

WELL LOCATION AND ACREAGE DEDICATION PLAT

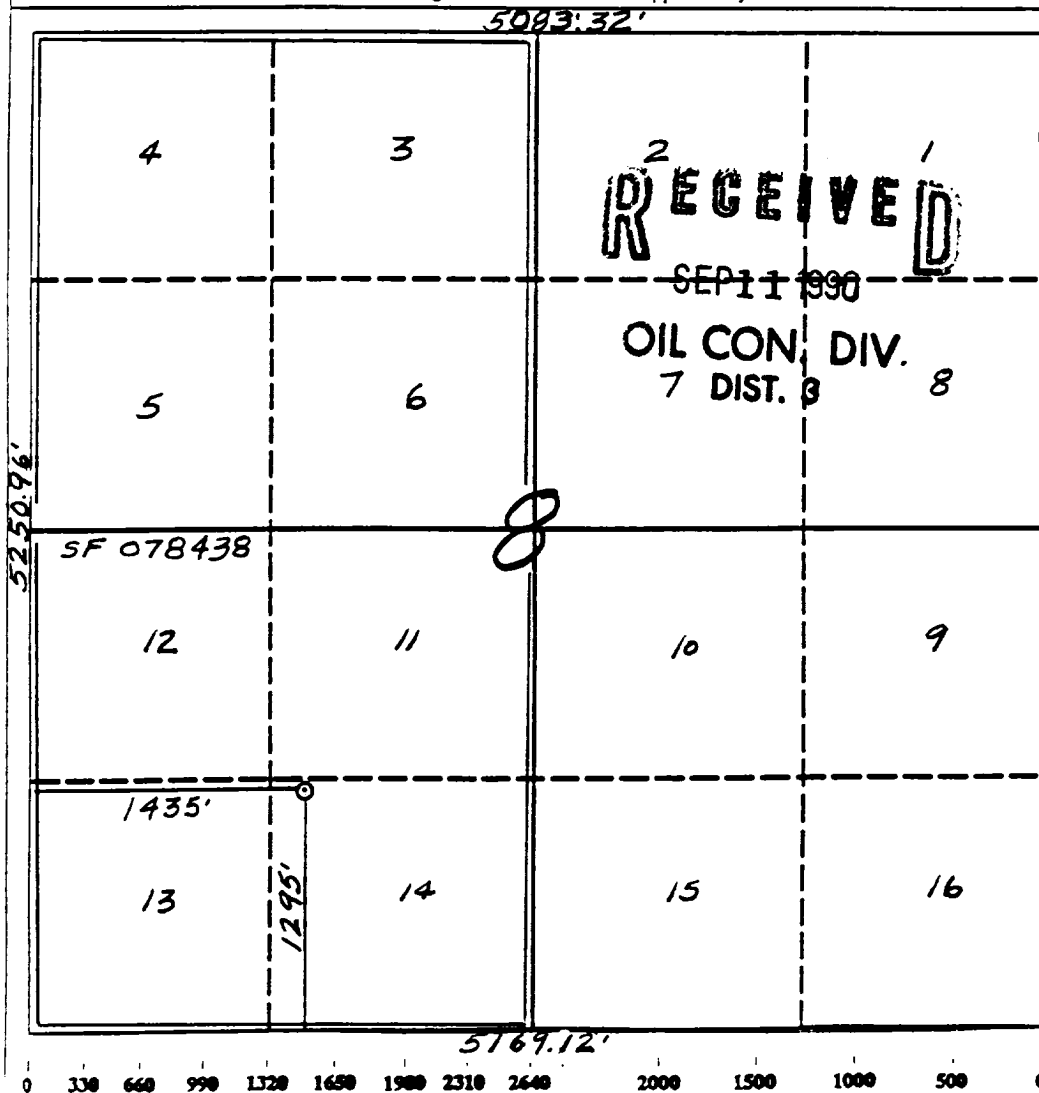
All Distances must be from the outer boundaries of the section

Operator Meridian Oil Inc.		Lease (SF-078438) San Juan 32-9 Unit		Well No. 857
Unit Letter II	Section 8	Township 31 North	Range 9 West	County NMPM San Juan
Actual Footage Location of Well: 1295 feet from the South line and 1435 feet from the West line				
Ground level Elev. 6640'	Producing Formation Fruitland Coal	Pool Basin	Dedicated Acreage: 309.37 Acres	

1. Outline the acreage dedicated to the subject well by colored pencil or hatchure marks on the plat below.
2. If more than one lease is dedicated to the well, outline each and identify the ownership thereof (both as to working interest and royalty).
3. If more than one lease of different ownership is dedicated to the well, have the interest of all owners been consolidated by communitization, unitization, force-pooling, etc.?  
☒ Yes ☐ No If answer is "yes" type of consolidation unitization

If answer is "no" list the owners and tract descriptions which have actually been consolidated. (Use reverse side of this form if necessary).

No allowable will be assigned to the well until all interests have been consolidated (by communitization, unitization, forced-pooling, or otherwise) or until a non-standard unit, eliminating such interest, has been approved by the Division.



OPERATOR CERTIFICATION

I hereby certify that the information contained herein is true and complete to the best of my knowledge and belief.

Peggy Bradfield  
Signature

Peggy Bradfield  
Printed Name

Regulatory Affairs  
Position

Meridian Oil Inc.  
Company

8-17-90  
Date

SURVEYOR CERTIFICATION

I hereby certify that the well location shown on this plat was plotted from field notes of actual surveys made by me or under my supervision, and that the same is true and correct to the best of my knowledge and belief.

5-25-90

Neale C. Edwards  
Date Surveyed

Neale C. Edwards  
Signature of Surveyor



Neale C. Edwards  
Certificate No.

Well Name: 257 SAN JUAN 32-9 UNIT      1295'FSL 1435'FWL  
 Sec. 8 T31N R09W      SAN JUAN NEW MEXICO  
 BASIN FRUITLAND COAL      Elevation 6640'GL

Formation tops: Surface- SAN JOSE  
                   Ojo Alamo- 2137  
                   Kirtland- 2151  
                   Fruitland- 3000  
                   Fruitland Coal Top- 3246      Intermediate TD- 3226  
                   Fruitland Coal Base- 3493      Total Depth- 3483  
                   Pictured Cliffs- 3495

Logging Program: Mud logs from intermediate to total depth.

Mud Program:	Interval	Type	Weight	Visc.	Fl. Loss
	0 - 200	Spud	8.4 - 8.9	40-50	no control
	200 - 3226	Non-dispersed	8.4 - 9.1	30-60	no control
	3226 - 3483	Formation Water	8.4		no control

Casing Program:	Hole Size	Depth Interval	Csg. Size	Weight	Grade
	12 1/4"	0 - 200	9 5/8"	32.3#	H-40
	8 3/4"	0 - 3226	7"	20.0#	K-55
	6 1/4"	3176 - 3483	5 1/2"	15.5#	K-55
Tubing Program:		0 - 3483	2 7/8"	6.5#	J-55

Float Equipment: 9 5/8" surface casing - saw tooth guide shoe. Centralizers will be run in accordance with Onshore Order #2.

7" intermediate casing - guide shoe and self-fill insert float valve. Three centralizers run every other joint above shoe. Run insert float one joint above the guide shoe. Two turbolizing type centralizers - one below and one into the base of the Ojo Alamo @ 2151'. Standard centralizers thereafter every fourth joint up to the base of the surface pipe.

5 1/2" production casing - float shoe on bottom and a pre-drilled liner run to the 7" casing with a minimum 50' overlap. Liner hanger is a double slip grip type.

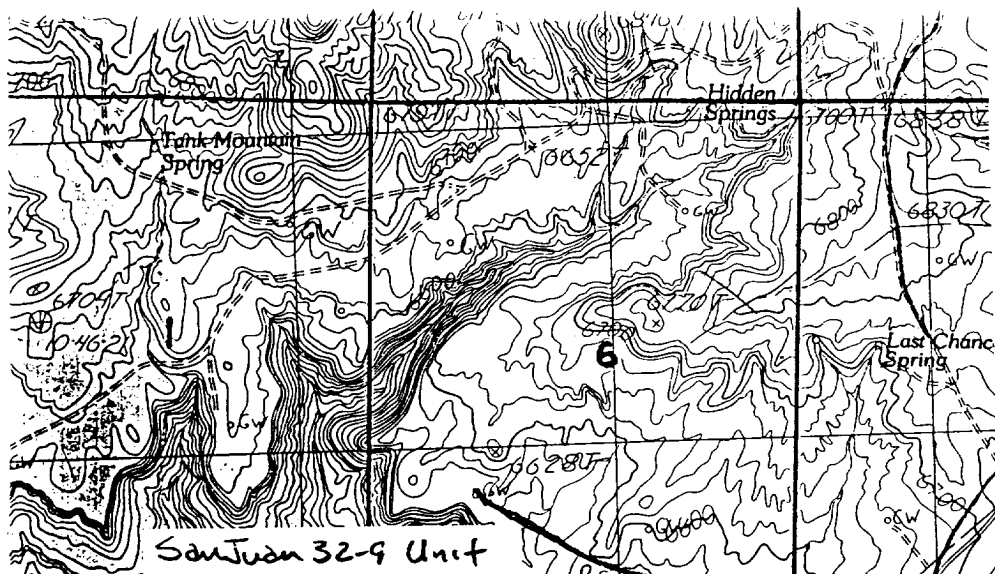
Wellhead Equipment: 9 5/8" x 7" x 2 7/8" x 11" 3000 psi xmas tree assembly.

#### Cementing:

9 5/8" surface casing - cement with 160 sacks of class "B" cement with 1/4# flocele/sack and 3% calcium chloride (189 cu ft. of slurry, 200% excess to circulate to surface). WOC 12 hours. Test casing to 600 psi for 30 minutes.

7" intermediate casing - lead with 471 sacks of 65/35 class "B" poz with 6% gel, 2% calcium chloride and 1/2 cu ft. Perlite/sack (10.3 gallons of water/sack) tail with 100 sacks of class "B" with 2% calcium chloride. 1028 cu ft. of slurry, 110% excess to circulate to surface. If hole conditions permit, a 600 ft spacer will be run ahead of the cement slurry to avoid mud contamination of the cement. WOC 12 hours. If cement does not circulate to surface, a temperature log will be run after 8 hours to determine TOC.

5 1/2" liner - do not cement.



Link Springs  
San Juan 32-9 Unit #257  
T31N, R9W  
500' New Construction  
3400' existing BLM Roads  
within Unit Boundaries  
Remaining road on  
existing BLM ROW  
MAP 1

