

UNITED STATES  
DEPARTMENT OF THE INTERIOR  
BUREAU OF LAND MANAGEMENT

30-045-28248  
APPLICATION FOR PERMIT TO DRILL, DEEPEN, OR PLUG BACK

1a. TYPE OF WORK DRILL	5. LEASE NUMBER SF-078765
1b. TYPE OF WELL GAS	6. IF INDIAN, ALL. OR TRIBE NAME
2. OPERATOR MERIDIAN OIL INC.	7. UNIT AGREEMENT NAME ROSA UNIT
3. ADDRESS & PHONE NO. OF OPERATOR P O BOX 4289 FARMINGTON, NM 87499	8. FARM OR LEASE NAME ROSA UNIT
4. LOCATION OF WELL 1690' FSL 925' FWL	9. WELL NO. 273
10. FIELD, POOL, OR WILDCAT BASIN FRUITLAND COAL	11. SEC. T. R. M OR BLK. SEC. 8 T31N R06W NMPM
14. DISTANCE IN MILES FROM NEAREST TOWN 8 MILES SOUTH OF ALLISON	12. COUNTY RIO ARriba
15. DISTANCE FROM PROPOSED LOCATION 925' TO NEAREST PROPERTY OR LEASE LINE.	13. STATE NM
16. ACRES IN LEASE 2466.23	17. ACRES ASSIGNED TO WELL 5/ 320.00
18. DISTANCE FROM PROPOSED LOCATION TO NEAREST WELL DR. 2640' COMPL., OR APPLIED FOR ON THIS LEASE.	19. PROPOSED DEPTH 3590'
20. ROTARY OR CABLE TOOLS ROTARY	21. ELEVATIONS (DF, FT, GR, ETC.) 6803' GL
22. APPROX. DATE WORK WILL START	

23. PROPOSED CASING AND CEMENTING PROGRAM

\*SEE OPERATIONS PLAN

RECEIVED

24. AUTHORIZED BY: *Joe Caldwell*

SEP 24 1990

REG. DRILLING ENGR.

OIL CON. DIV.

9/11/90  
DATE

DIST. 3

PERMIT NO. \_\_\_\_\_ APPROVAL DATE \_\_\_\_\_

APPROVED BY \_\_\_\_\_ TITLE \_\_\_\_\_ DATE \_\_\_\_\_

NOTE: THIS FORMAT IS ISSUED IN LIEU OF US BLM FORM 3160-3.

*dfc*

*John Skelton*  
*ra*

Submit to Appropriate  
District Office  
State Lease - 4 copies  
Fee Lease - 3 copies

State of New Mexico  
Energy, Minerals and Natural Resources Department

Form C-102  
Revised 1-1-89

OIL CONSERVATION DIVISION

P.O. Box 2088

Santa Fe, New Mexico 87504-2088

DISTRICT I  
P.O. Box 1980, Hobbs, NM 88240

DISTRICT II  
P.O. Drawer DD, Artesia, NM 88210

DISTRICT III  
1000 Rio Brazos Rd., Aztec, NM 87410

WELL LOCATION AND ACREAGE DEDICATION PLAT

All Distances must be from the outer boundaries of the section

Operator Meridian Oil Inc.			Lease Rosa Unit (SF-078765)		Well No. 273
Unit Letter L	Section 8	Township 31 North	Range 6 West	County NMPM San Juan	
Actual Footage Location of Well: 1690 feet from the South line and 925 feet from the West line					
Ground level Elev. 6803'	Producing Formation Fruitland Coal		Pool Basin	Dedicated Acreage: 320 Acres	

1. Outline the acreage dedicated to the subject well by colored pencil or hectize marks on the plat below.
2. If more than one lease is dedicated to the well, outline each and identify the ownership thereof (both as to working interest and royalty).
3. If more than one lease of different ownership is dedicated to the well, have the interest of all owners been consolidated by communitization, unitization, force-pooling, etc.?  
☒ Yes ☐ No If answer is "yes" type of consolidation unitization  
If answer is "no" list the owners and tract descriptions which have actually been consolidated. (Use reverse side of this form if necessary.)  
No allowable will be assigned to the well until all interests have been consolidated (by communitization, unitization, force-pooling, or otherwise) or until a non-standard unit, eliminating such interest, has been approved by the Division.

OPERATOR CERTIFICATION

I hereby certify that the information contained herein is true and complete to the best of my knowledge and belief.

Signature *Peggy Bradford*

Printed Name  
Peggy Bradford

Position  
Regulatory Affairs

Company  
Meridian Oil Inc.

Date  
9-10-90

SURVEYOR CERTIFICATION

I hereby certify that the well location shown on this plat was plotted from field notes of actual surveys made by me or under my supervision, and that the same is true and correct to the best of my knowledge and belief.

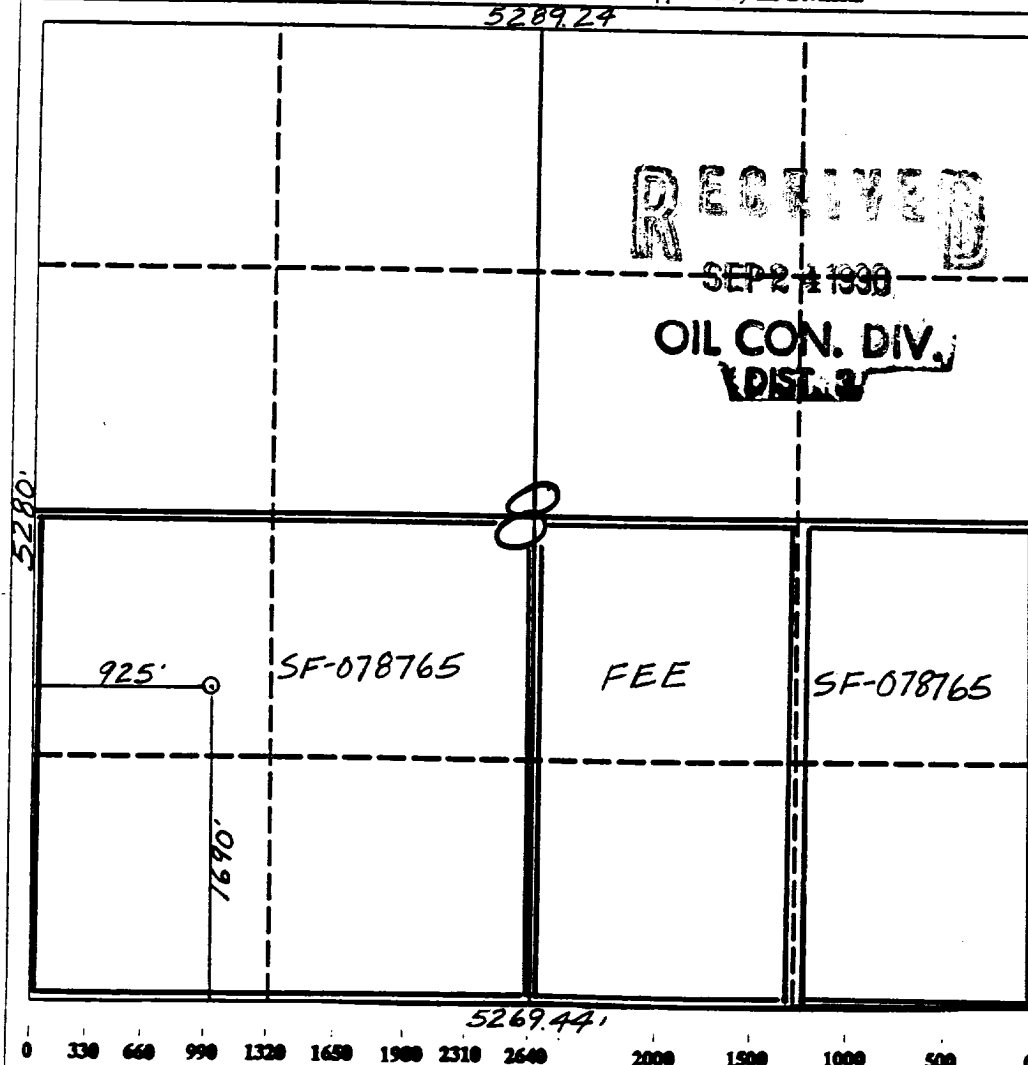
Date Surveyed  
6-21-90

Signature *Neale C. Edwards*

Professional Surveyor



Certificate No. 6857  
Neale C. Edwards



Well Name: 273 ROSA UNIT  
 Sec. 8 T31N R06W  
 BASIN FRUITLAND COAL

1690'FSL 925'FWL  
 RIO ARRIBA NEW MEXICO  
 Elevation 6803'GL

Formation tops: Surface- SAN JOSE

Ojo Alamo-	2740		
Kirtland-	2850		
Fruitland-	3389		
Fruitland Coal Top-	3420	Intermediate TD-	3390
Fruitland Coal Base-	3586	Total Depth-	3590
Pictured Cliffs-	3602		

Logging Program: Mud logs from intermediate to total depth.

Mud Program:	Interval	Type	Weight	Visc.	Fl. Loss
	0 - 200	Spud	8.4 - 8.9	40-50	no control
	200 - 3390	Non-dispersed	8.4 - 9.1	30-60	no control
	3390 - 3590	Formation Water	8.4		no control

Casing Program:	Hole Size	Depth Interval	Csg. Size	Weight	Grade
	12 1/4"	0 - 200	9 5/8"	32.3#	H-40
	8 3/4"	0 - 3390	7"	20.0#	K-55
	6 1/4"	3340 - 3590	5 1/2"	15.5#	K-55
Tubing Program:		0 - 3590	2 7/8"	6.5#	J-55

Float Equipment: 9 5/8" surface casing - saw tooth guide shoe. Centralizers will be run in accordance with Onshore Order #2.

7" intermediate casing - guide shoe and self-fill insert float valve. Three centralizers run every other joint above shoe. Run insert float one joint above the guide shoe. Two turbolizing type centralizers - one below and one into the base of the Ojo Alamo @ 2850'. Standard centralizers thereafter every fourth joint up to the base of the surface pipe.

5 1/2" production casing - float shoe on bottom and a pre-drilled liner run to the 7" casing with a minimum 50' overlap. Liner hanger is a double slip grip type.

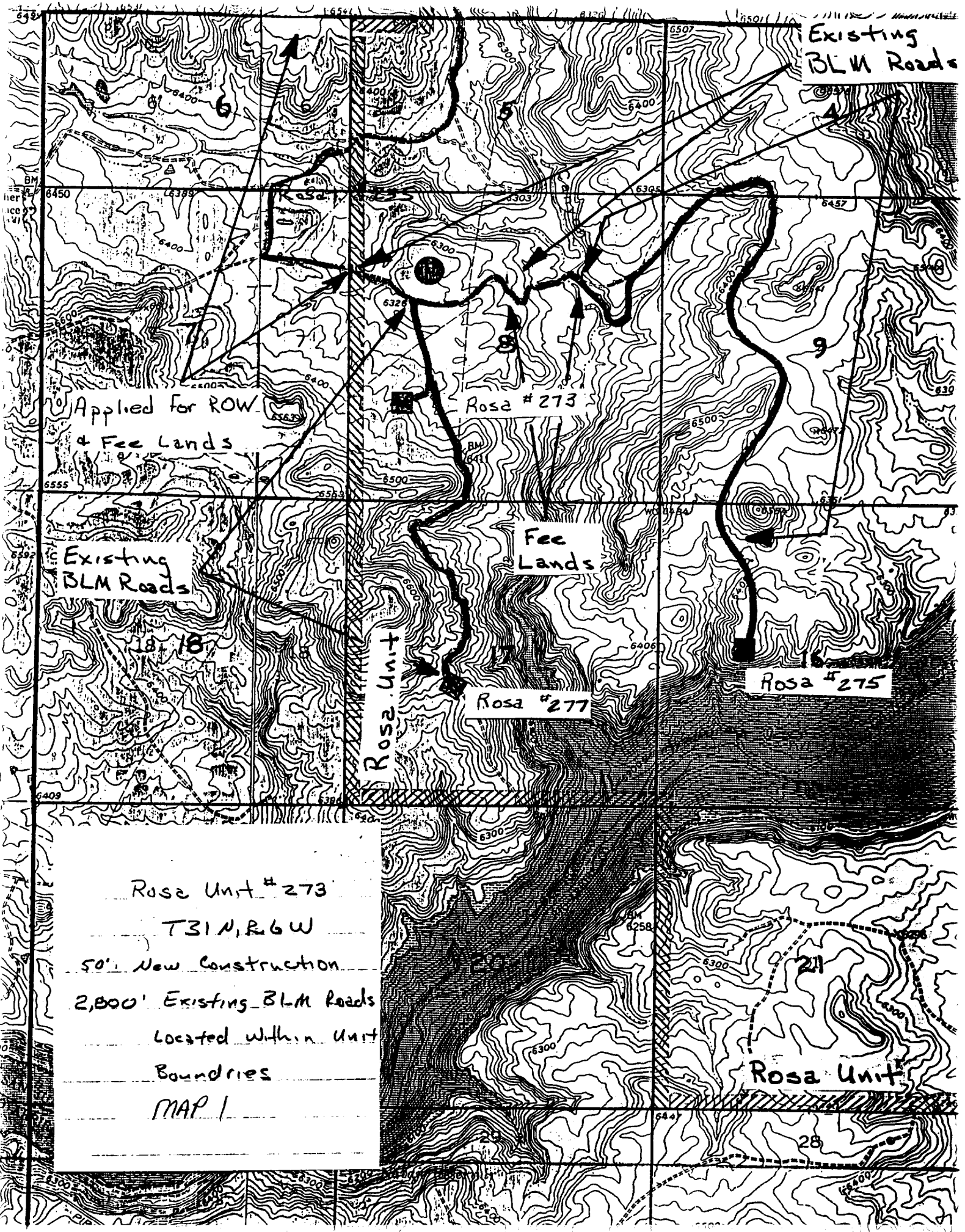
Wellhead Equipment: 9 5/8" x 7" x 2 7/8" x 11" 3000 psi xmas tree assembly.

#### Cementing:

9 5/8" surface casing - cement with 160 sacks of class "B" cement with 1/4# flocele/sack and 3% calcium chloride (189 cu ft. of slurry, 200% excess to circulate to surface). WOC 12 hours. Test casing to 600 psi for 30 minutes.

7" intermediate casing - lead with 498 sacks of 65/35 class "B" poz with 6% gel, 2% calcium chloride and 1/2 cu ft. Perlite/sack (10.3 gallons of water/sack) tail with 100 sacks of class "B" with 2% calcium chloride. 1080 cu ft. of slurry, 110% excess to circulate to surface. If hole conditions permit, a 600 ft spacer will be run ahead of the cement slurry to avoid mud contamination of the cement. WOC 12 hours. If cement does not circulate to surface, a temperature log will be run after 8 hours to determine TOC.

5 1/2" liner - do not cement.



Existing  
BLM Roads

Applied for ROW  
& Fee Lands

Existing  
BLM Roads

Fee  
Lands

Rosa Unit

Rosa #277

Rosa #275

Rosa Unit #273

T31N, R6W

50' New Construction

2,800' Existing BLM Roads

Located Within Unit

Boundaries

MAP 1

Rosa Unit