

UNITED STATES
DEPARTMENT OF THE INTERIOR

BUREAU OF LAND MANAGEMENT 30-045-28312

APPLICATION FOR PERMIT TO DRILL, DEEPEN, OR PLUG BACK

1a. TYPE OF WORK

DRILL ☒

DEEPEN ☐

PLUG BACK ☐

b. TYPE OF WELL

OIL
WELL ☐

GAS
WELL ☒

OTHER

SINGLE
ZONE ☐

MULTIPLE
ZONE ☐

2. NAME OF OPERATOR

Northwest Pipeline Corporation

3. ADDRESS OF OPERATOR

3539 East 30th Street - Farmington, NM 87401

4. LOCATION OF WELL (Report location clearly and in accordance with any State requirements.)*

At surface

800' FSL & 1158' FWL SW/SW

At proposed prod. zone

14. DISTANCE IN MILES AND DIRECTION FROM NEAREST TOWN OR POST OFFICE*

Approximately 7 miles east of Cedar Hill, NM

15. DISTANCE FROM PROPOSED*

LOCATION TO NEAREST
PROPERTY OR LEASE LINE, FT.
(Also to nearest drlg. unit line, if any)

800'

16. NO. OF ACRES IN LEASE

1318.15

17. NO. OF ACRES ASSIGNED

TO THIS WELL
W/2 of 312.74 acres

18. DISTANCE FROM PROPOSED LOCATION*
TO NEAREST WELL, DRILLING, COMPLETED,
OR APPLIED FOR, ON THIS LEASE, FT.

+ 3500'

19. PROPOSED DEPTH

3420' GR

20. ROTARY OR CABLE TOOLS

Rotary

21. ELEVATIONS (Show whether DF, RT, GR, etc.)

6567' GR

This action is subject to technical and

procedural review pursuant to 43 CFR 3105.3

and appeal pursuant to 43 CFR 3105.4 AND CEMENTING PROGRAM

22. APPROX. DATE WORK WILL START*

October 1, 1990

23. ~~THIS SPACE IS RESERVED FOR THE BUREAU OF LAND MANAGEMENT~~

SIZE OF HOLE	SIZE OF CASING	WEIGHT PER FOOT	SETTING DEPTH	QUANTITY OF CEMENT
12-1/4"	9-5/8"	36# K-55	200'	120 sx (143 cu.ft.)
8-3/4"	7"	23# K-55	3160'	434 sx (831 cu.ft.)
6-1/4"	5-1/2"	23# P-110	2960' to 3420'	Open-hole

1) Plan to drill Fruitland from 3195' to 3409' and set liner in open hole. If open hole proves unproductive, the 5-1/2" liner will be changed to 15.5# K-55, cemented and hydraulically stimulated as necessary.

2) The W/2 of Section 3 is dedicated to this well.

RECEIVED

OCT 1 1990

OIL CON. DIV.
DIST. 3

IN ABOVE SPACE DESCRIBE PROPOSED PROGRAM: If proposal is to deepen or plug back, give data on present productive zone and proposed new productive zone. If proposal is to drill or deepen directionally, give pertinent data on subsurface locations and measured and true vertical depths. Give blowout preventer program, if any.

24.

SIGNED

Mark McCallister

TITLE Prod. & Drlg. Engineer

DATE 9-4-90

(This space for Federal or State office use)

PERMIT NO.

APPROVAL DATE

APPROVED BY

CONDITIONS OF APPROVAL, IF ANY:

TITLE

NMOCD

*See Instructions On Reverse Side

Submit to Appropriate
District Office
State Lease - 4 copies
Fee Lease - 3 copies

State of New Mexico
Energy, Minerals and Natural Resources Department

Form C-102
Revised 1-1-89

OIL CONSERVATION DIVISION

P.O. Box 2088
Santa Fe, New Mexico 87504-2088

DISTRICT I
P.O. Box 1980, Hobbs, NM 88240

DISTRICT II
P.O. Drawer DD, Artesia, NM 88210

DISTRICT III
1000 Rio Brazos Rd., Aztec, NM 87410

WELL LOCATION AND ACREAGE DEDICATION PLAT

All Distances must be from the outer boundaries of the section

Operator NORTHWEST PIPELINE CORPORATION			Lease SAN JUAN 31 FEDERAL 3		Well No. 2
Unit Letter M	Section 3	Township T.31 N.	Range R.9 W.	County SAN JUAN COUNTY	NMPM
Actual Footage Location of Well: 800 feet from the SOUTH line and 1158 feet from the WEST line					
Ground level Elev. 6567		Producing Formation Fruitland		Pool Basin Fruitland Coal	
					Dedicated Acreage: 312.74 Acres

1. Outline the acreage dedicated to the subject well by colored pencil or hatchure marks on the plat below.

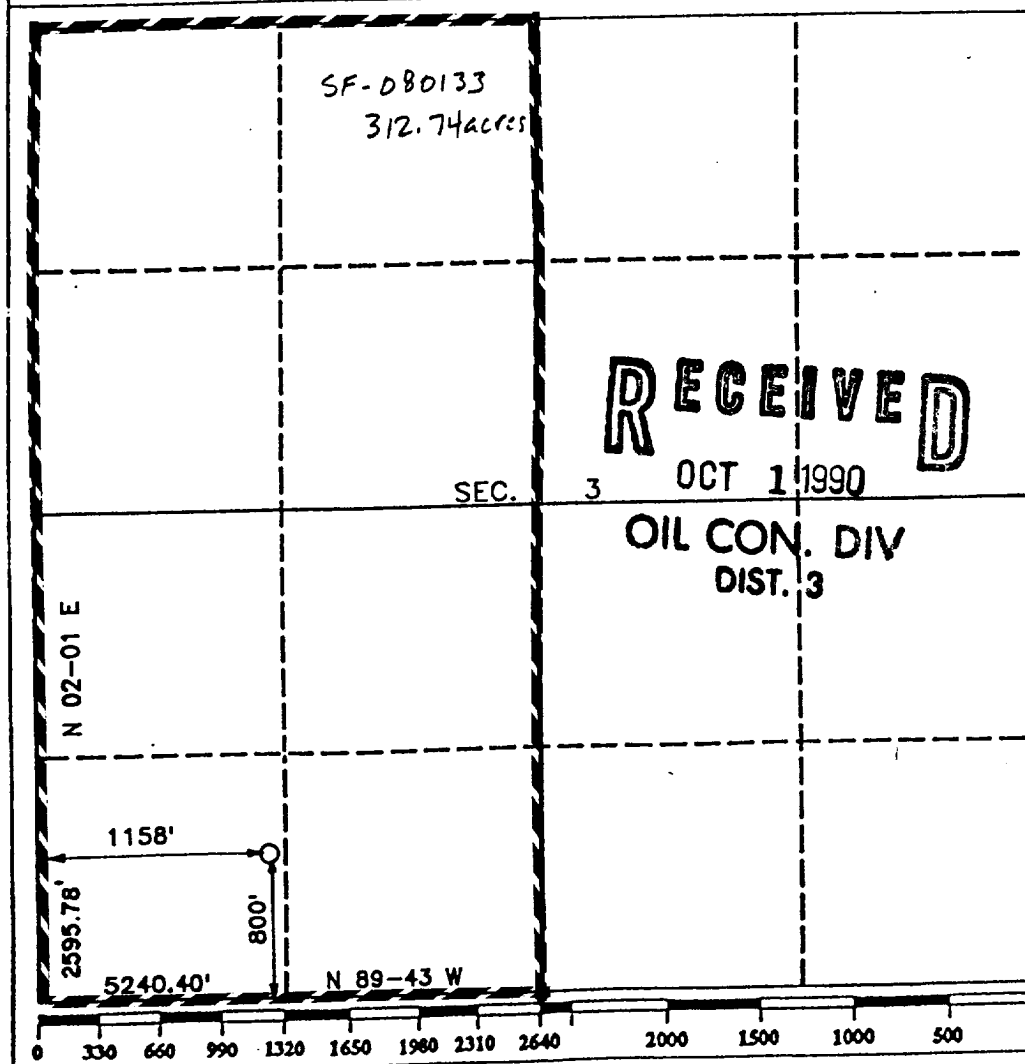
2. If more than one lease is dedicated to the well, outline each and identify the ownership thereof (both as to working interest and royalty).

3. If more than one lease of different ownership is dedicated to the well, have the interest of all owners been consolidated by communitization, unitization, force-pooling, etc.?

☐ Yes ☐ No If answer is "yes" type of consolidation _____

If answer is "no" list the owners and tract descriptions which have actually been consolidated. (Use reverse side of this form if necessary.) _____

No allowable will be assigned to the well until all interests have been consolidated (by communitization, unitization, forced-pooling, or otherwise) or until a non-standard unit, eliminating such interest, has been approved by the Division.



OPERATOR CERTIFICATION

I hereby certify that the information contained herein is true and complete to the best of my knowledge and belief.

Signature

Printed Name
Mike Turnbaugh

Position
Production Superintendent

Company
Northwest Pipeline Corp.

Date
August 28, 1990

SURVEYOR CERTIFICATION

I hereby certify that the well location shown on this plat was plotted from field notes of actual surveys made by me or under my supervision, and that the same is true and correct to the best of my knowledge and belief.

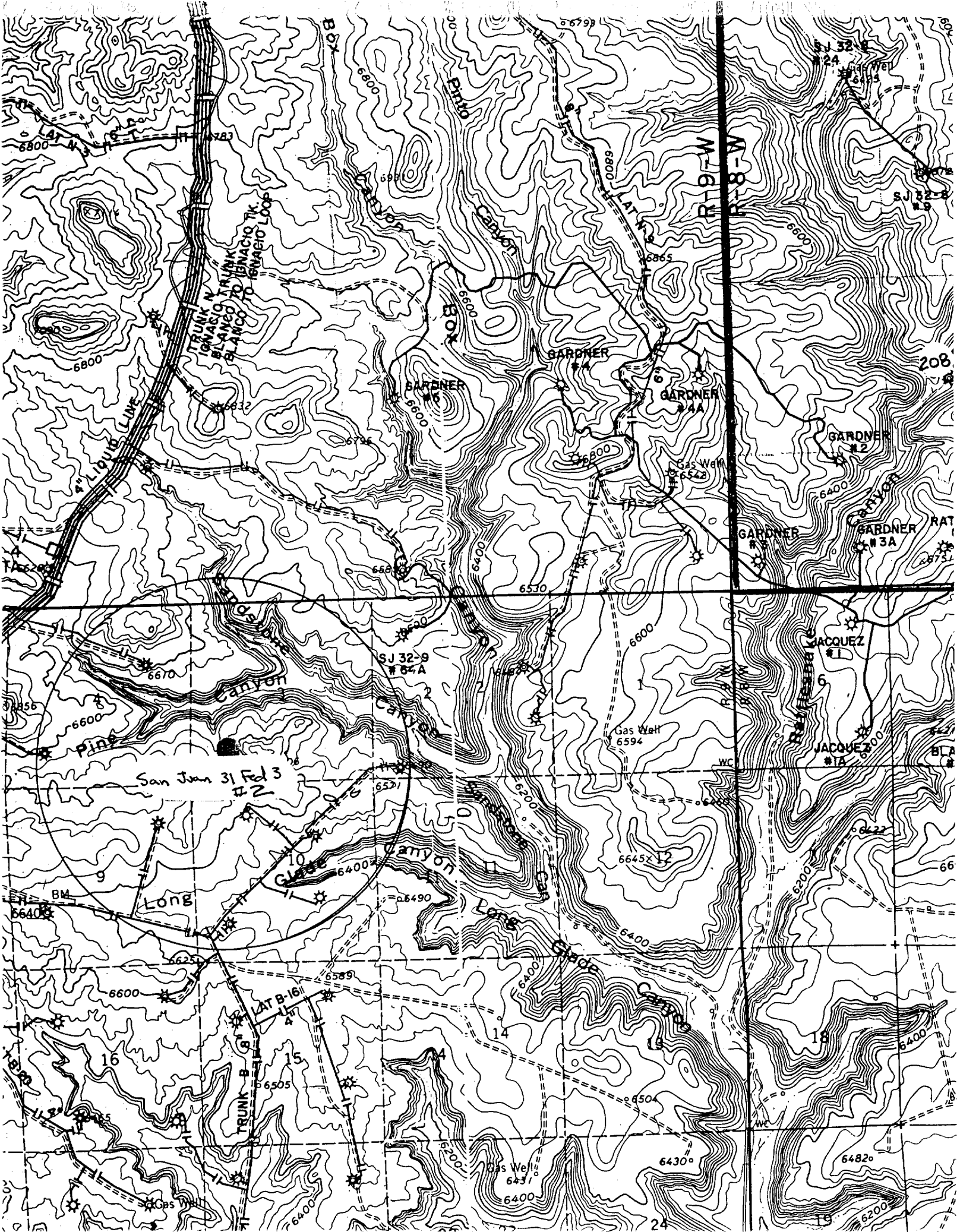
Date Surveyed

Signature & Seal
Professional Surveyor

R. HOWARD DAGGETT
1979

Certificate No.

Registered Professional
Land Surveyor



$$\begin{array}{r}
 38.35 \\
 38.65 \\
 \hline
 79.00 \\
 70.00 \\
 \hline
 149.00 \\
 160.00 \\
 \hline
 309.00
 \end{array}$$

$$\begin{array}{r}
 156.57 \\
 156.17 \\
 \hline
 312.74
 \end{array}$$