

UNITED STATES
DEPARTMENT OF THE INTERIOR
BUREAU OF LAND MANAGEMENT

APPLICATION FOR PERMIT TO DRILL, DEEPEN, OR PLUG BACK

1a. TYPE OF WORK

DRILL ☒

DEEPEN ☐

PLUG BACK ☐

b. TYPE OF WELL

OIL
WELL ☐

GAS
WELL ☒

OTHER

SINGLE
ZONE ☐

MULTIPLE
ZONE ☐

2. NAME OF OPERATOR

Northwest Pipeline Corporation

3. ADDRESS OF OPERATOR

3539 East 30th Street - Farmington, NM 87402

4. LOCATION OF WELL (Report location clearly and in accordance with any State requirements.)*

At surface

1026' FNL & 1793' FEL NW/NE

At proposed prod. zone

Same

14. DISTANCE IN MILES AND DIRECTION FROM NEAREST TOWN OR POST OFFICE*

32 miles southeast of Ignacio, Colorado

16. DISTANCE FROM PROPOSED*

LOCATION TO NEAREST
PROPERTY OR LEASE LINE, FT.
(Also to nearest drig. unit line, if any)

1026'

18. DISTANCE FROM PROPOSED LOCATION*
TO NEAREST WELL, DRILLING, COMPLETED,
OR APPLIED FOR, ON THIS LEASE, FT.

+ 3000'

16. NO. OF ACRES IN LEASE

1718.910

19. PROPOSED DEPTH

3480'

17. NO. OF ACRES ASSIGNED
TO THIS WELL

N/320

20. ROTARY OR CABLE TOOLS

Rotary

21. ELEVATIONS (Show whether DF, RT, GR, etc.) This action is subject to technical and
procedural review pursuant to 43 CFR 3185.3
and appeal pursuant to 43 CFR 3185.4.

6727' GR

22. APPROX. DATE WORK WILL START*

October 1, 1990

23. PROPOSED CASING AND CEMENTING PROGRAM

SIZE OF HOLE	SIZE OF CASING	WEIGHT PER FOOT	SETTING DEPTH	GENERAL QUANTITY OF CEMENT
13-1/2"	9-5/8"	36# K-55	200'	120 sx (143 cu.ft.)
8-3/4"	7"	23# K-55	3270'	455 sx (876 cu.ft.)
6-1/4"	5-1/2"	23# P110	3170'-3480'	Open hole

- 1) Plan to drill Fruitland and set liner in open hole. If open hole proves unproductive, the 5-1/2" liner will be changed to 15.5#, K-55, cemented and hydraulically stimulated as necessary.
- 2) The dedicated acreage to this well is shown on the attached plat.

IN ABOVE SPACE DESCRIBE PROPOSED PROGRAM: If proposal is to deepen or plug back, give data on present productive zone and proposed new productive zone. If proposal is to drill or deepen directionally, give pertinent data on subsurface locations and measured and true vertical depths. Give blowout preventer program, if any.

24.

SIGNED

Mark McCallister
Mark McCallister

TITLE

Sr. Prod. & Drlg. Engineer

DATE

9-11-90

(This space for Federal or State office use)

PERMIT NO.

APPROVAL DATE

APPROVED BY

TITLE

CONDITIONS OF APPROVAL, IF ANY:

Hold C-109 for pool change 32-7 #54 well

*See Instructions On Reverse Side

Submit to Appropriate
District Office
State Lease - 4 copies
Fee Lease - 3 copies

State of New Mexico
Energy, Minerals and Natural Resources Department

RECEIVED
Form C-102
Revised 1-1-89

OIL CONSERVATION DIVISION

SEP 14 1990

DISTRICT I
P.O. Box 1980, Hobbs, NM 88240

P.O. Box 2088
Santa Fe, New Mexico 87504-2088

BUREAU OF LAND MANAGEMENT
FARMINGTON RESOURCE AREA

DISTRICT II
P.O. Drawer DD, Artesia, NM 88210

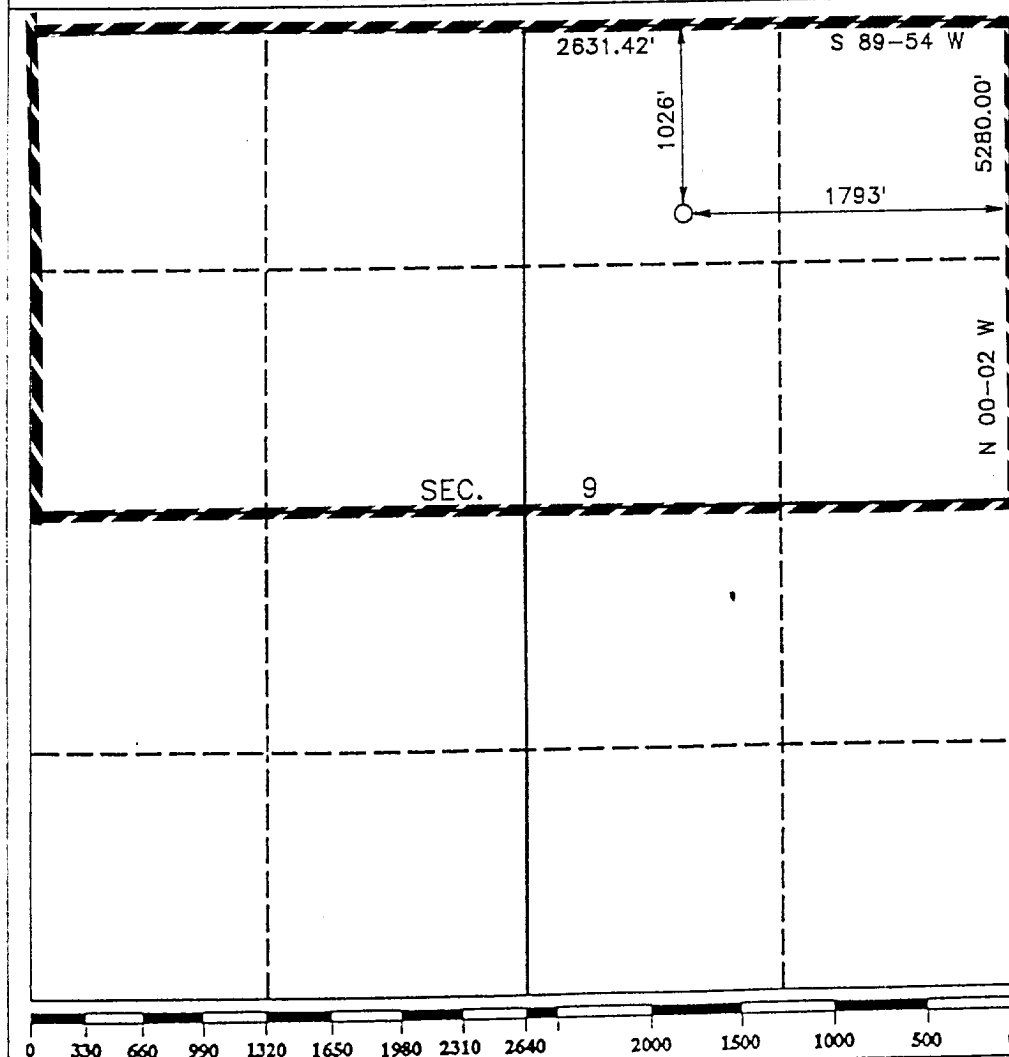
DISTRICT III
1000 Rio Brazos Rd., Aztec, NM 87410

WELL LOCATION AND ACREAGE DEDICATION PLAT

All Distances must be from the outer boundaries of the section

Operator NORTHWEST PIPELINE CORP.			Lease SAN JUAN 32-7 UNIT		Well No. 229
Unit Letter B	Section 9	Township T.31 N.	Range R.7 W.	County SAN JUAN COUNTY	
Actual Footage Location of Well: 1026 feet from the NORTH line and 1793 feet from the EAST line					
Ground level Elev. 6727.		Producing Formation Fruitland		Dedicated Acreage: 320 Acres	

- Outline the acreage dedicated to the subject well by colored pencil or hachure marks on the plat below.
- If more than one lease is dedicated to the well, outline each and identify the ownership thereof (both as to working interest and royalty).
- If more than one lease of different ownership is dedicated to the well, have the interest of all owners been consolidated by communitization, unitization, force-pooling, etc.?
☒ Yes ☐ No If answer is "yes" type of consolidation **UNITIZED**
If answer is "no" list the owners and tract descriptions which have actually been consolidated. (Use reverse side of this form if necessary.)
No allowable will be assigned to the well until all interests have been consolidated (by communitization, unitization, forced-pooling, or otherwise) or until a non-standard unit, eliminating such interest, has been approved by the Division.



OPERATOR CERTIFICATION

I hereby certify that the information contained herein is true and complete to the best of my knowledge and belief.

Signature <i>Mike Turnbaugh</i>
Printed Name MIKE TURNBAUGH
Position PRODUCTION SUPERINTENDENT
Company NORTHWEST PIPELINE CORP.
Date 9-10-90

SURVEYOR CERTIFICATION

I hereby certify that the well location shown on this plat was plotted from field notes of actual surveys made by me or under my supervision, and that the same is true and correct to the best of my knowledge and belief.

Date Surveyed AUGUST 1990
Signature & Seal of Professional Surveyor <i>R. Howard Dagget</i> R. HOWARD DAGGET REGISTERED PROFESSIONAL LAND SURVEYOR 9679
Certificate No. 9679
Registered Professional Land Surveyor

