

UNITED STATES
DEPARTMENT OF THE INTERIOR
BUREAU OF LAND MANAGEMENT

APPLICATION FOR PERMIT TO DRILL, DEEPEN, OR PLUG BACK

1a. TYPE OF WORK DRILL <input checked="" type="checkbox"/> DEEPEN <input type="checkbox"/> PLUG BACK <input type="checkbox"/>		5. LEASE DESIGNATION AND SERIAL NO. SF-078998	
b. TYPE OF WELL OIL WELL <input type="checkbox"/> GAS WELL <input checked="" type="checkbox"/> OTHER <input type="checkbox"/>		6. IF INDIAN, ALLOTTEE OR TRIBE NAME	
2. NAME OF OPERATOR Northwest Pipeline Corporation		7. UNIT AGREEMENT NAME San Juan 32-7 Unit	
3. ADDRESS OF OPERATOR 3539 East 30th Street - Farmington, NM 87402		8. FARM OR LEASE NAME San Juan 32-7 Unit	
4. LOCATION OF WELL (Report location clearly and in accordance with any State requirements.)* At surface 1234' FWL & 1474' FSL NW/SW At proposed prod. zone		9. WELL NO. #231	
14. DISTANCE IN MILES AND DIRECTION FROM NEAREST TOWN OR POST OFFICE* 32 miles southwest of Ignacio, Colorado		10. FIELD AND POOL, OR WILDCAT Basin Fruitland Coal	
15. DISTANCE FROM PROPOSED* LOCATION TO NEAREST PROPERTY OR LEASE LINE, FT. (Also to nearest drlg. unit line, if any) 1234'		11. SEC., T., R., M., OR BLK. AND SURVEY OR AREA Sec. 17E, T31N, R7W	
16. NO. OF ACRES IN LEASE 1718.910		12. COUNTY OR PARISH San Juan	
17. NO. OF ACRES ASSIGNED TO THIS WELL 320		13. STATE NM	
18. DISTANCE FROM PROPOSED LOCATION* TO NEAREST WELL, DRILLING, COMPLETED, OR APPLIED FOR, ON THIS LEASE, FT. ± 3000'		20. ROTARY OR CABLE TOOLS Rotary	
21. ELEVATIONS (Show whether DF, RT, GR, etc.) 6449' GR		22. APPROX. DATE WORK WILL START* October 1, 1990	
23. PROPOSED CASING AND CEMENTING PROGRAM This action is subject to technical and procedural review pursuant to 43 CFR 3105.3 and appeal pursuant to 43 CFR 3105.4 DRILLING OPERATIONS AUTHORIZED ARE SUBJECT TO COMPLIANCE WITH ATTACHED GENERAL REQUIREMENTS			
SIZE OF HOLE	SIZE OF CASING	WEIGHT PER FOOT	SETTING DEPTH
13-1/2"	9-5/8"	36# K-55	200'
8-3/4"	7"	23# K-55	3125'
6-1/4"	5-1/2"	23# P110	3025'-3335'
			QUANTITY OF CEMENT 120 sx (143 cu.ft.) 435 sx (834 cu.ft.) Open hole

1) Plan to drill Fruitland and set liner in open hole. If open hole proves unproductive, the 5-1/2" liner will be changed to 15.5#, K-55, cemented and hydraulically stimulated as necessary.

2) The dedicated acreage to this well is shown on the attached plat.

RECEIVED

OCT 26 1990

OIL CON. DIV.

IN ABOVE SPACE DESCRIBE PROPOSED PROGRAM: If proposal is to deepen or plug back, give data on present productive zone and proposed new productive zone. If proposal is to drill or deepen directionally, give pertinent data on subsurface locations and measured and true vertical depths. Give blowout preventer program, if any.

24. SIGNED Mark McCallister TITLE Sr. Prod. & Drlg. Engineer DATE 9-12-90
(This space for Federal or State office use)

PERMIT NO. _____ APPROVAL DATE _____

APPROVED BY _____ TITLE _____
CONDITIONS OF APPROVAL, IF ANY:

NMOOD

*See Instructions On Reverse Side

Submit to Appropriate
District Office
State Lease - 4 copies
Fee Lease - 3 copies

DISTRICT I
P.O. Box 1980, Hobbs, NM 88240

DISTRICT II
P.O. Drawer DD, Artesia, NM 88210

DISTRICT III
1000 Rio Brazos Rd., Aztec, NM 87410

State of New Mexico
Energy, Minerals and Natural Resources Department

OIL CONSERVATION DIVISION

P.O. Box 2088
Santa Fe, New Mexico 87504-2088

RECEIVED
Form 02
Revised 1-1-89

SEP 14 1990

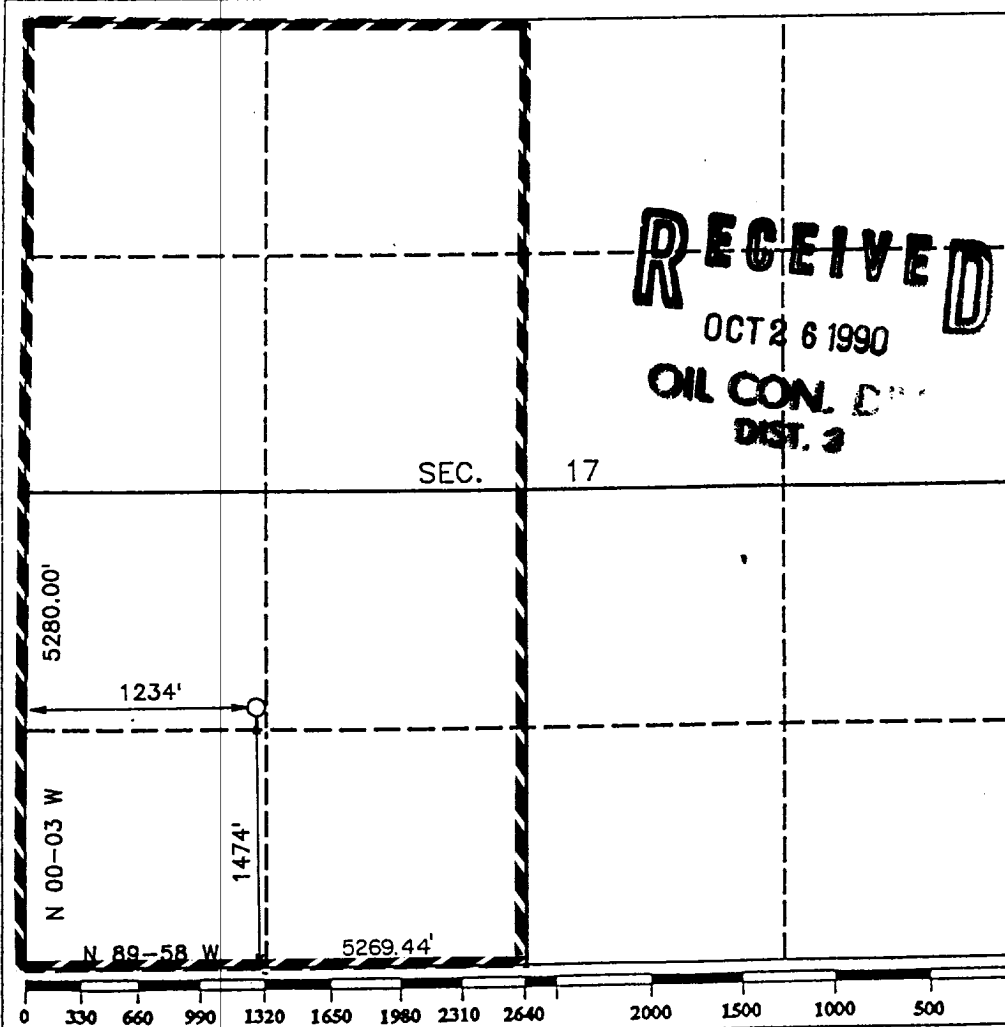
BUREAU OF LAND MANAGEMENT
FARMINGTON RESOURCE AREA

WELL LOCATION AND ACREAGE DEDICATION PLAT

All Distances must be from the outer boundaries of the section

Operator NORTHWEST PIPELINE CORP.		Lease SAN JUAN 32-7 UNIT		Well No. 231
Unit Letter L	Section 17	Township T.31 N.	Range R.7 W.	County SAN JUAN COUNTY
Actual Footage Location of Well: 1474 feet from the SOUTH line and 1234 feet from the WEST line				
Ground level Elev. 6449	Producing Formation Fruitland	Pool Basin Fruitland Coal	Dedicated Acreage: 320 Acres	

1. Outline the acreage dedicated to the subject well by colored pencil or hachure marks on the plat below.
2. If more than one lease is dedicated to the well, outline each and identify the ownership thereof (both as to working interest and royalty).
3. If more than one lease of different ownership is dedicated to the well, have the interest of all owners been consolidated by communitization, unitization, force-pooling, etc.?
☒ Yes ☐ No If answer is "yes" type of consolidation unitized
If answer is "no" list the owners and tract descriptions which have actually been consolidated. (Use reverse side of this form if necessary.)
No allowable will be assigned to the well until all interests have been consolidated (by communitization, unitization, forced-pooling, or otherwise) or until a non-standard unit, eliminating such interest, has been approved by the Division.



OPERATOR CERTIFICATION

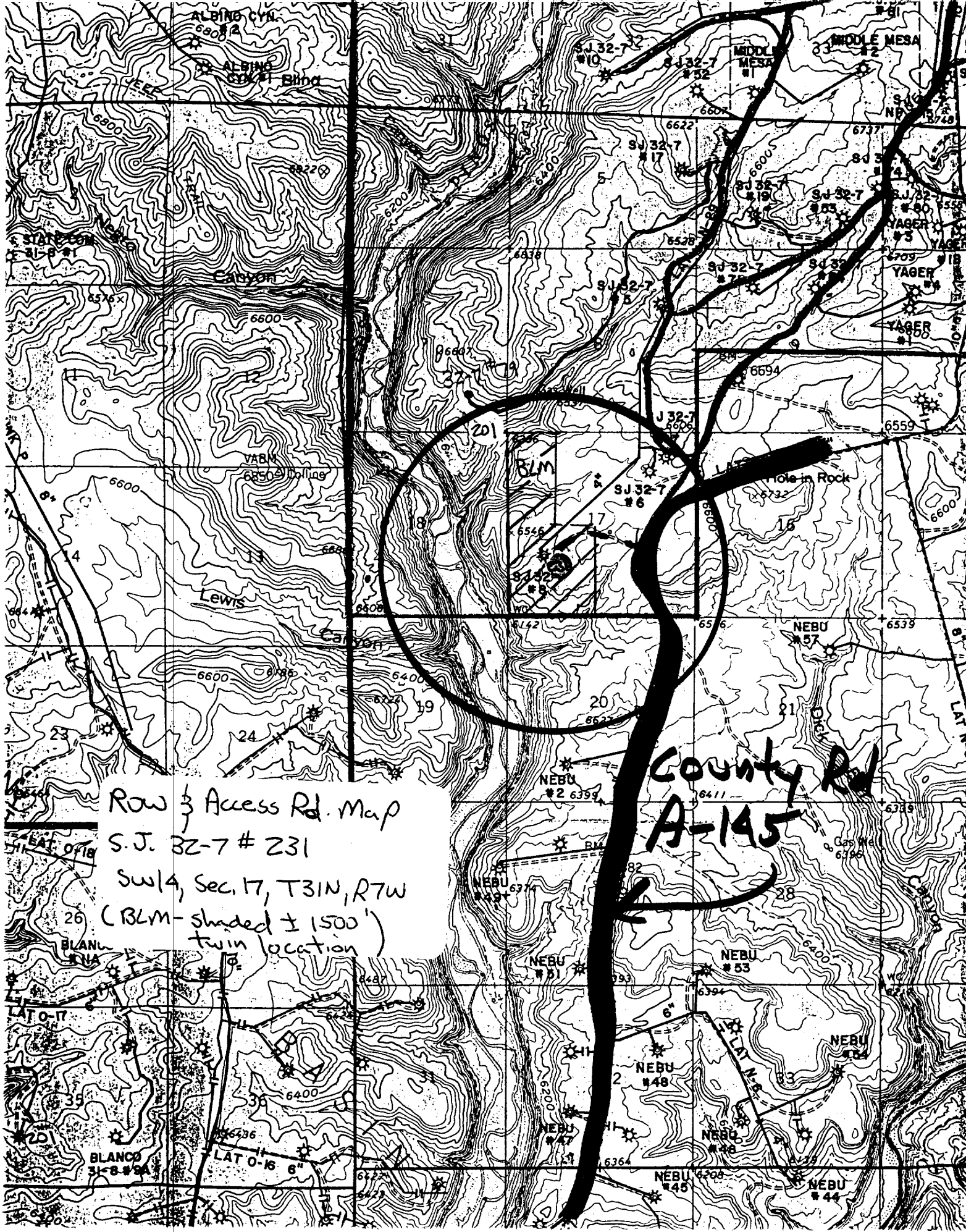
I hereby certify that the information contained herein is true and complete to the best of my knowledge and belief.

Signature
Mike Turnbaugh
Printed Name
Mike Turnbaugh
Position
Production Superintendent
Company
Northwest Pipeline Corp.
Date
9-10-90

SURVEYOR CERTIFICATION

I hereby certify that the well location shown on this plat was plotted from field notes of actual surveys made by me or under my supervision, and that the same is true and correct to the best of my knowledge and belief.

Date Surveyed
JULY 1990
Signature & Seal of Professional Surveyor
R. HOWARD DAGGETT
Certificate No.
9870
Registered Professional Land Surveyor



Row 3 Access Rd. Map
S.J. 32-7 # 231
Sw 1/4, Sec. 17, T31N, R7W
26 (BLM-shaded $\pm 1500'$)
twin location

County Rd
A-145