

UNITED STATES  
DEPARTMENT OF THE INTERIOR  
BUREAU OF LAND MANAGEMENT

APPLICATION FOR PERMIT TO DRILL, DEEPEN, OR PLUG BACK

1a. TYPE OF WORK DRILL <input checked="" type="checkbox"/> DEEPEN <input type="checkbox"/> PLUG BACK <input type="checkbox"/>			5. LEASE DESIGNATION AND SERIAL NO. SF-078996	
b. TYPE OF WELL OIL WELL <input type="checkbox"/> GAS WELL <input checked="" type="checkbox"/> OTHER <input type="checkbox"/> SINGLE ZONE <input checked="" type="checkbox"/> MULTIPLE ZONE <input type="checkbox"/>			6. IF INDIAN, ALLOTTEE OR TRIBE NAME	
2. NAME OF OPERATOR Phillips Petroleum Company			7. UNIT AGREEMENT NAME San Juan 32-7 Unit	
3. ADDRESS OF OPERATOR 300 W. Arrington, Suite 200, Farmington, NM 87401			8. FARM OR LEASE NAME	
4. LOCATION OF WELL (Report location clearly and in accordance with any State requirements.) At surface Unit N, 681' FSL & 1311' FWL At proposed prod. zone Unit N, 681' FSL & 1311' FWL			9. WELL NO. 218	
14. DISTANCE IN MILES AND DIRECTION FROM NEAREST TOWN OR POST OFFICE*			10. FIELD AND POOL, OR WILDCAT Basin Fruitland Coal Gas	
15. DISTANCE FROM PROPOSED* LOCATION TO NEAREST PROPERTY OR LEASE LINE, FT. (Also to nearest drilg. unit line, if any) 681' FSL			11. SEC., T., R., W., OR BLK. AND SURVEY OR AREA Sec. 5, T-31-N, R-7-W	
16. NO. OF ACRES IN LEASE 2537.37			12. COUNTY OR PARISH San Juan	
17. NO. OF ACRES ASSIGNED TO THIS WELL 320 AC			13. STATE NM	
18. DISTANCE FROM PROPOSED LOCATION* TO NEAREST WELL, DRILLING, COMPLETED, OR APPLIED FOR, ON THIS LEASE, FT. 3866' from #18			20. ROTARY OR CABLE TOOLS Rotary	
21. ELEVATIONS (Show whether DF, RT, GR, etc.) 6647' (GL Unprepared)			22. APPROX. DATE WORK WILL START* Upon Approval	

PROPOSED CASING AND CEMENTING PROGRAM

SIZE OF HOLE	SIZE OF CASING	WEIGHT PER FOOT	SETTING DEPTH	QUANTITY OF CEMENT
12-1/4"	9-5/8"	36#, K-55	250'	250 sxs, Circ to Surface
8-3/4"	7"	23#, K-55	3240'	650 sxs, Circ to Surface
6-1/8"	5-1/2"	15.5# or 23#	3140'-3400'	*

\*If the coal is cleated, a 5-1/2", 23#, P-110 liner will be run in the open hole without being cemented.

\*If the coal is not cleated, the well will be stimulated and a 5-1/2", 15.5#, J-55 liner will be run without being cemented.

*Unorthodox location*

RECEIVED  
OCT 3 1990  
OIL CON. DIV.  
DIST. 3

Mud Program and BOP Equipment: See Attached

IN ABOVE SPACE DESCRIBE PROPOSED PROGRAM: If proposal is to deepen or plug back, give data on present productive zone and proposed new productive zone. If proposal is to drill or deepen directionally, give pertinent data on subsurface locations and measured and true vertical depths. Give blowout preventer program, if any.

34. SIGNED J. M. Sanders TITLE Supv., Regulatory Affairs DATE 9/20/90  
(This space for Federal or State office use)

PERMIT NO. \_\_\_\_\_ APPROVAL DATE \_\_\_\_\_

APPROVED BY \_\_\_\_\_ TITLE \_\_\_\_\_ DATE \_\_\_\_\_  
CONDITIONS OF APPROVAL, IF ANY:

\*See Instructions On Reverse Side

Submit to Appropriate  
District Office  
State Lease - 4 copies  
Fee Lease - 3 copies

State of New Mexico  
Energy, Minerals and Natural Resources Department

Form C-102  
Revised 1-1-89

OIL CONSERVATION DIVISION

P.O. Box 2088  
Santa Fe, New Mexico 87504-2088

DISTRICT I  
P.O. Box 1980, Hobbs, NM 88240

DISTRICT II  
P.O. Drawer DD, Artesia, NM 88210

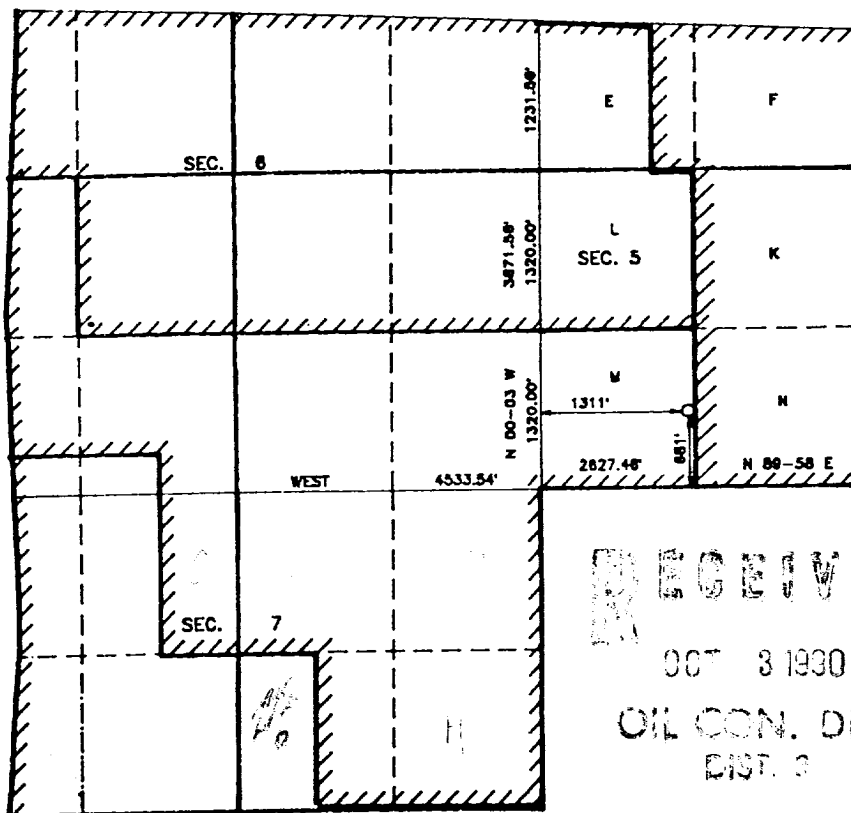
DISTRICT III  
1000 Rio Brazos Rd., Aztec, NM 87410

WELL LOCATION AND ACREAGE DEDICATION PLAT

All Distances must be from the outer boundaries of the section

Operator <b>PHILLIPS PETROLEUM</b>			Lease <b>SAN JUAN 32-7 UNIT</b>		Well No. <b>218</b>
Unit Letter <b>M</b>	Section <b>5</b>	Township <b>T.31 N.</b>	Range <b>R.7 W.</b>	County <b>SAN JUAN COUNTY</b>	
Actual Footage Location of Well: <b>681</b> feet from the <b>SOUTH</b> line and <b>1311</b> feet from the <b>WEST</b> line					
Ground level Elev. <b>6647</b>	Producing Formation <b>Fruitland</b>		Pool <b>Basin Fruitland Coal</b>		Dedicated Acreage: <b>320</b> Acres

- Outline the acreage dedicated to the subject well by colored pencil or hatchure marks on the plat below.
- If more than one lease is dedicated to the well, outline each and identify the ownership thereof (both as to working interest and royalty).
- If more than one lease of different ownership is dedicated to the well, have the interest of all owners been consolidated by communization, unitization, force-pooling, etc.?  
☒ Yes ☐ No If answer is "yes" type of consolidation Unitization  
If answer is "no" list the owners and tract descriptions which have actually been consolidated. (Use reverse side of this form if necessary).  
No allowable will be assigned to the well until all interests have been consolidated (by communization, unitization, forced-pooling, or otherwise) or until a non-standard unit, eliminating such interest, has been approved by the Division.



OPERATOR CERTIFICATION

I hereby certify that the information contained herein is true and complete to the best of my knowledge and belief.

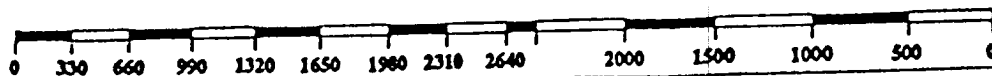
Signature  
*L. M. Sanders*  
Printed Name  
**L. M. Sanders**  
Position  
**Supv., Regulatory Affairs**  
Company  
**Phillips Petroleum Company**  
Date  
**9/29/90**

SURVEYOR CERTIFICATION

I hereby certify that the well location shown on this plat was plotted from field notes of actual surveys made by me or under my supervision, and that the same is true and correct to the best of my knowledge and belief.

Date Surveyed  
**AUGUST 25, 1990**  
Signature & Seal of Registered Professional Surveyor  
*R. HOWARD DAGGETT*  
**R. HOWARD DAGGETT**  
**8679**  
Certificate No.  
**8679**  
Registered Professional Land Surveyor

RECEIVED  
OCT 3 1990  
OIL CON. DIV.  
DIST. 3





**LTR**



**Job separation sheet**

UNITED STATES  
DEPARTMENT OF THE INTERIOR  
BUREAU OF LAND MANAGEMENT

APPLICATION FOR PERMIT TO DRILL, DEEPEN, OR PLUG BACK

1a. TYPE OF WORK  
DRILL ☒ DEEPEN ☐ PLUG BACK ☐

b. TYPE OF WELL  
OIL WELL ☐ GAS WELL ☒ OTHER ☐  
SINGLE ZONE ☒ MULTIPLE ZONE ☐

2. NAME OF OPERATOR  
Phillips Petroleum Company

3. ADDRESS OF OPERATOR  
300 W. Arrington, Suite 200, Farmington, NM 87401

4. LOCATION OF WELL (Report location clearly and in accordance with any State requirements.)  
At surface  
Unit ~~N~~, 681' FSL & 1311' FWL  
At proposed, prod. zone  
Unit ~~N~~, 681' FSL & 1311' FWL

14. DISTANCE IN MILES AND DIRECTION FROM NEAREST TOWN OR POST OFFICE\*

16. DISTANCE FROM PROPOSED\*  
LOCATION TO NEAREST  
PROPERTY OR LEASE LINE, FT.  
(Also to nearest drlg. unit line, if any) 681' FSL

18. DISTANCE FROM PROPOSED LOCATION\*  
TO NEAREST WELL, DRILLING, COMPLETED,  
OR APPLIED FOR, ON THIS LEASE, FT. 3866' from #18

21. ELEVATIONS (Show whether DF, RT, GR, etc.)  
6647' (GL Unprepared)

23. PROPOSED CASING AND CEMENTING PROGRAM

SIZE OF HOLE	SIZE OF CASING	WEIGHT PER FOOT	SETTING DEPTH	GENERAL QUANTITY OF CEMENT
12-1/4"	9-5/8"	36#, K-55	250'	250 sxs, Circ to Surface
8-3/4"	7"	23#, K-55	3240'	650 sxs, Circ to Surface
6-1/8"	5-1/2"	15.5# or 23#	3140'-3400'	*

\*If the coal is cleated, a 5-1/2", 23#, P-110 liner will be run in the open hole without being cemented.

\*If the coal is not cleated, the well will be stimulated and a 5-1/2", 15.5#, J-55 liner will be run without being cemented.

*Unorthodox location*

RECEIVED  
OCT 25 1990  
OIL CON. DIV  
DIST. 3

Mud Program and BOP Equipment: See Attached

IN ABOVE SPACE DESCRIBE PROPOSED PROGRAM: If proposal is to deepen or plug back, give data on present productive zone and proposed new productive zone. If proposal is to drill or deepen directionally, give pertinent data on subsurface locations and measured and true vertical depths. Give blowout preventer program, if any.

24. SIGNED *L.M. Sanders* TITLE Supv., Regulatory Affairs DATE 9/20/90

(This space for Federal or State office use)

PERMIT NO. \_\_\_\_\_ APPROVAL DATE \_\_\_\_\_

APPROVED BY \_\_\_\_\_ TITLE \_\_\_\_\_

CONDITIONS OF APPROVAL, IF ANY:

*Handed to 104 for USF (USA) R-9305-NSP NSL-2910*  
\*See Instructions On Reverse Side

# OIL CONSERVATION DIVISION

DISTRICT I  
P.O. Box 1980, Hobbs, NM 88240

P.O. Box 2088  
Santa Fe, New Mexico 87504-2088

DISTRICT II  
P.O. Drawer DD, Artesia, NM 88210

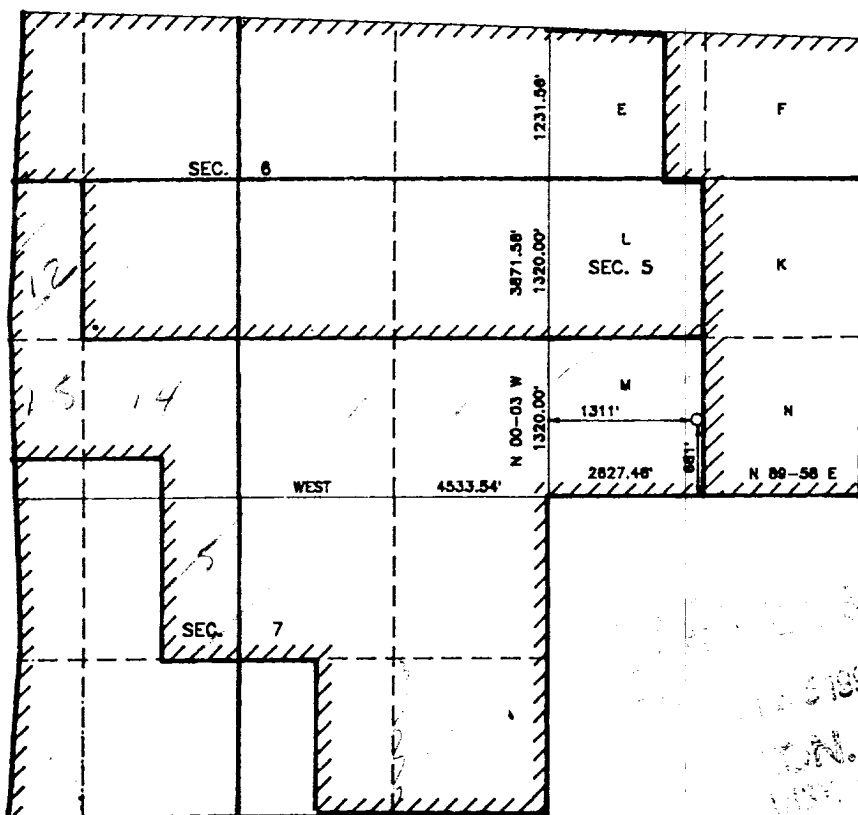
DISTRICT III  
1000 Rio Brazos Rd., Aztec, NM 87410

# WELL LOCATION AND ACREAGE DEDICATION PLAT

All Distances must be from the outer boundaries of the section

Operator PHILLIPS PETROLEUM		Lease SAN JUAN 32-7 UNIT		Well No. 218	
Unit Letter M	Section 5	Township T.31 N.	Range R.7 W.	County SAN JUAN COUNTY	
Actual Poolage Location of Well: 681		SOUTH		1311 WEST	
feet from the		line and		feet from the line	
Ground level Elev. 6647	Producing Formation Fruitland		Pool Basin Fruitland Coal		Dedicated Acreage: 320 324.39 Acres

1. Outline the acreage dedicated to the subject well by colored pencil or hatchure marks on the plat below.
2. If more than one lease is dedicated to the well, outline each and identify the ownership thereof (both as to working interest and royalty).
3. If more than one lease of different ownership is dedicated to the well, have the interest of all owners been consolidated by communization, unitization, force-pooling, etc.?
- ☒ Yes      ☐ No      If answer is "yes" type of consolidation Unitization
- If answer is "no" list the owners and tract descriptions which have actually been consolidated. (Use reverse side of this form if necessary.)
- No allowable will be assigned to the well until all interests have been consolidated (by communization, unitization, forced-pooling, or otherwise) or until a non-standard unit, eliminating such interest, has been approved by the Division.



OPERATOR CERTIFICATION

I hereby certify that the information contained herein is true and complete to the best of my knowledge and belief.

Signature L. M. Sanders

Printed Name L. M. Sanders

Position Supv., Regulatory Affairs

Company Phillips Petroleum Company

Date 10/1/78

### SURVEYOR CERTIFICATION

I hereby certify that the well location shown on this plat was plotted from field notes of actual surveys made by me or under my supervision, and that the same is true and correct to the best of my knowledge and belief.

Date Surveyed

AUGUST 25, 1990

Signature & Seal of the Professional Surveyor

R. HOWARD BAGGETT

REGISTERED PROFESSIONAL LAND SURVEYOR

9879

Certificate No. 9879

Registered Professional  
Land Surveyor