

UNITED STATES
DEPARTMENT OF THE INTERIOR
BUREAU OF LAND MANAGEMENT

APPLICATION FOR PERMIT TO DRILL, DEEPEN, OR PLUG BACK

1a. TYPE OF WORK

DRILL ☒

DEEPEN ☐

PLUG BACK ☐

b. TYPE OF WELL

OIL
WELL ☐

GAS
WELL ☒

OTHER

SINGLE
ZONE ☒

MULTIPLE
ZONE ☐

2. NAME OF OPERATOR

Phillips Petroleum Company

3. ADDRESS OF OPERATOR

300 W. Arrington, Suite 200, Farmington, NM 87401

4. LOCATION OF WELL (Report location clearly and in accordance with any State requirements.)

At surface

Unit J, 2491' FSL & 1795' FEL

At proposed prod. zone

Unit J, 2491' FSL & 1795' FEL

14. DISTANCE IN MILES AND DIRECTION FROM NEAREST TOWN OR POST OFFICE*

15. DISTANCE FROM PROPOSED*
LOCATION TO NEAREST
PROPERTY OR LEASE LINE, FT.
(Also to nearest drg. unit line, if any)

1795' FEL

18. DISTANCE FROM PROPOSED LOCATION*
TO NEAREST WELL, DRILLING, COMPLETED,
OR APPLIED FOR, ON THIS LEASE, FT.

1420' from #18

16. NO. OF ACRES IN LEASE

2537.27 Acres

19. PROPOSED DEPTH

3400' +

17. NO. OF ACRES ASSIGNED
TO THIS WELL

320 AC

20. ROTARY OR CABLE TOOLS

Rotary

21. ELEVATIONS (Show whether DF, RT, GR, etc.) This action is subject to technical and
procedural review pursuant to 43 CFR 3185.3
and appeal pursuant to 43 CFR 3185.4.

6656' (GL Unprepared)

23. PROPOSED CASING AND CEMENTING PROGRAM

22. APPROX. DATE WORK WILL START*

Upon Approval

DRILLING OPERATIONS AUTHORIZED ARE
SUBJECT TO COMPLIANCE WITH ATTACHED

SIZE OF HOLE	SIZE OF CASING	WEIGHT PER FOOT	SETTING DEPTH	"GENERAL REQUIREMENTS"
12-1/4"	9-5/8"	36#, K-55	250'	250 sxs, Circ to Surface
8-3/4"	7"	23#, K-55	3240'	650 sxs, Circ to Surface
6-1/8"	5-1/2"	15.5# or 23#	3140'-3400'	*

*If the coal is cleated, a 5-1/2", 23#, P-110 liner will be run in the open hole without being cemented.

*If the coal is not cleated, the well will be stimulated and a 5-1/2", 15.5#, J-55 liner will be run without being cemented.

Unorthodox location and non-standard proration unit. NMOCD hearing held 9/5/90. Will provide NMOCD Order.

Mud Program and BOP Equipment: See Attached

IN ABOVE SPACE DESCRIBE PROPOSED PROGRAM: If proposal is to deepen or plug back, give data on present productive zone and proposed new productive zone. If proposal is to drill or deepen directionally, give pertinent data on subsurface locations and measured and true vertical depths. Give blowout preventer program, if any.

24.

SIGNED

A.M. Sanders

TITLE Supv. Regulatory Affairs

DATE

9/15/90

(This space for Federal or State office use)

PERMIT NO.

APPROVAL DATE

APPROVED BY

TITLE

DATE

CONDITIONS OF APPROVAL, IF ANY:

Hand C-104 KCA NSP + NSL NMOCD
R-9305

*See Instructions On Reverse Side

RECEIVED
OCT 25 1990
OIL CON. DIV.
DIST. 3

for John L. Keller

Submit to Appropriate
District Office
State Lease - 4 copies
Fee Lease - 3 copies

State of New Mexico
Energy, Minerals and Natural Resources Department

Form C-102
Revised 1-1-89

OIL CONSERVATION DIVISION

P.O. Box 2088
Santa Fe, New Mexico 87504-2088

DISTRICT I
P.O. Box 1980, Hobbs, NM 88240

DISTRICT II
P.O. Drawer DD, Artesia, NM 88210

DISTRICT III
1000 Rio Brazos Rd., Aztec, NM 87410

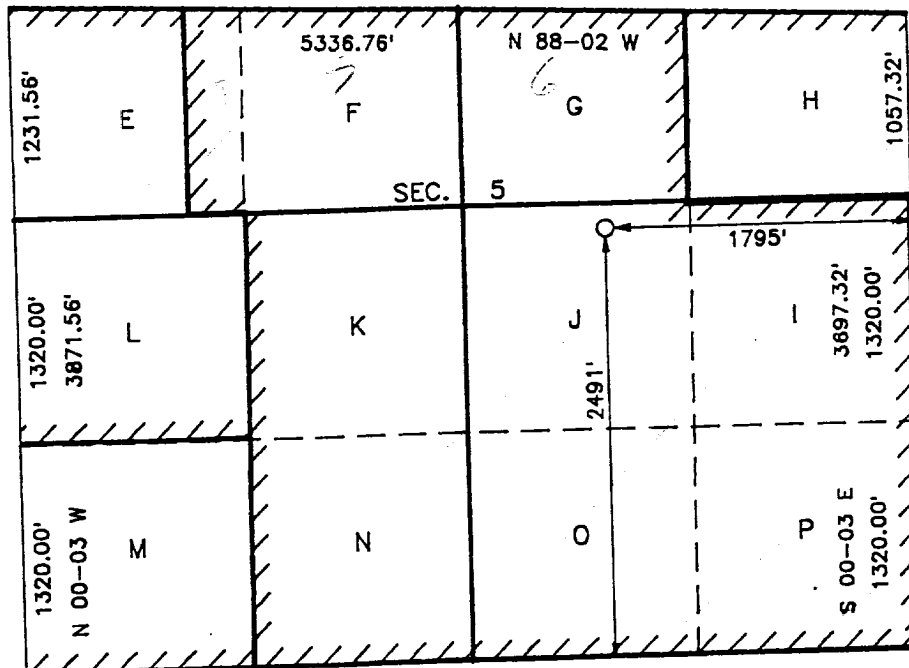
WELL LOCATION AND ACREAGE DEDICATION PLAT

All Distances must be from the outer boundaries of the section

Operator PHILLIPS PETROLEUM		Lease SAN JUAN 32-7 UNIT		Well No. 219
Unit Letter J	Section 5	Township T.31 N.	Range R.7 W.	County SAN JUAN COUNTY
Actual Footage Location of Well: 2491 feet from the SOUTH line and 1795 feet from the EAST line				
Ground level Elev. 6656	Producing Formation Fruitland	Pool Basin Fruitland Coal		Dedicated Acreage: 320 321.66 Acres

- Outline the acreage dedicated to the subject well by colored pencil or hatchure marks on the plat below.
- If more than one lease is dedicated to the well, outline each and identify the ownership thereof (both as to working interest and royalty).
- If more than one lease of different ownership is dedicated to the well, have the interest of all owners been consolidated by communization, unitization, force-pooling, etc.?
☒ Yes ☐ No If answer is "yes" type of consolidation **Unitization**
If answer is "no" list the owners and tract descriptions which have actually been consolidated. (Use reverse side of this form if necessary.)
No allowable will be assigned to the well until all interests have been consolidated (by communization, unitization, forced-pooling, or otherwise) or until a non-standard unit, eliminating such interest, has been approved by the Division.

RECEIVED
OCT 25 1990
OIL CON. DIV.
DIST. 3



OPERATOR CERTIFICATION

I hereby certify that the information contained herein is true and complete to the best of my knowledge and belief.

Signature
L. M. Sanders
Printed Name
L. M. Sanders
Position
Supv., Regulatory Affairs
Company
Phillips Petroleum Company
Date
9/13/90

SURVEYOR CERTIFICATION

I hereby certify that the well location shown on this plat was plotted from field notes of actual surveys made by me or under my supervision, and that the same is true and correct to the best of my knowledge and belief.

Date Surveyed
JULY 16 1990
Signature & Seal of Professional Surveyor
R. HOWARD DAGGETT
Certificate No.
9670
Registered Professional Land Surveyor

