



STATE OF NEW MEXICO
ENERGY, MINERALS AND NATURAL RESOURCES DEPARTMENT
OIL CONSERVATION DIVISION

NO 1845
10-19-90

GARREY CARRUTHERS
GOVERNOR

POST OFFICE BOX 2088
STATE LAND OFFICE BUILDING
SANTA FE, NEW MEXICO 87504
(505) 827-5800

October 5, 1990

Meridian Oil, Inc.
P.O. Box 4289
Farmington, NM 87499-4289

Attention: Peggy Bradfield

RECEIVED
OCT 15 1990
OIL CON. DIV.]
DIST. 3

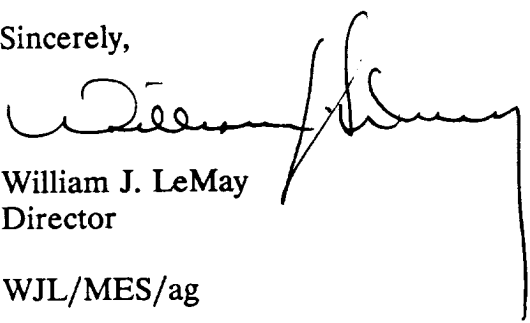
Administrative Order NSL-2883

Dear Ms. Bradfield:

Reference is made to your application dated September 11, 1990 for a non-standard coal gas well location for your Rosa Unit Well No. 261 to be located 1765 feet from the South line and 655 feet from the West line (Unit L) of Section 10, Township 31 North, Range 6 West, NMPM, Basin Fruitland Coal (Gas) Pool, San Juan County, New Mexico. The W/2 equivalent of said Section 10 shall be dedicated to the well forming a standard 320-acre, more or less, gas spacing and proration unit for said pool.

By the authority granted me under the provisions of Rule 8 of the Special Rules and Regulations for the Basin-Fruitland Coal (Gas) Pool as promulgated by Division Order No. R-8768, the above-described unorthodox coal gas well location is hereby approved.

Sincerely,


William J. LeMay
Director

WJL/MES/ag

cc: Oil Conservation Division - Aztec
US Bureau of Land Management - Farmington
US Bureau of Reclamation - Durango



STATE OF NEW MEXICO
ENERGY AND MINERALS DEPARTMENT
OIL CONSERVATION DIVISION
AZTEC DISTRICT OFFICE

1000 RIO HUAZOS ROAD
AZTEC, NEW MEXICO 87410
(505) 334-0178

GARREY CARPENTERS
GOVERNOR

Date: 10-3-90

ATTN: Mr. Stogner

Oil Conservation Division
P.O. Box 2088
Santa Fe, NM 87504-2088

Re: Proposed MC _____
Proposed DHC _____
Proposed NSL X _____
Proposed SWD _____
Proposed WFX _____
Proposed PMX _____

Gentlemen:

I have examined the application dated 9-13-90
for the Mention Oil Inc. Rosa Unit #261
Operator Lease & Well No.

L-10-31N-644 and my recommendations are as follows:
Unit, S-T-R

Approve

Yours truly,

Eugene B. Bunch

MERIDIAN OIL

September 11, 1990

Mr. William LeMay
New Mexico Oil Conservation Division
Post Office Box 2088
Santa Fe, New Mexico 87501

RECEIVED
SEP 13 1990
OIL CON. DIV.
DIST. 3

Re: Meridian Oil Inc. Rosa Unit #261
1765'FSL, 655'FWL, Section 10, T-31-N, R-6-W
Rio Arriba County, New Mexico

Dear Mr. LeMay:

Meridian Oil Inc. is applying for administrative approval of a non-standard location for the above location in the Fruitland Coal formation.

This application for the referenced location is due to the presence of San Juan River and archaeological concerns.

The following attachments are for your review:

1. Application for Permit to Drill.
2. Completed C-102 at referenced footages.
3. Offset operators/owners plat. All surrounding lands are within Rosa Unit boundaries - Meridian Oil Inc. operator.
4. 7.5 minute topographic map showing the orthodox windows for the west-half dedication, and enlargement of the map to define topographic features.
5. Archaeological report.
6. Letter from Bureau of Land Management dated June 29, 1990, concerning archaeological sites.
7. This well may be deemed economically unfeasible due to incremental directional drilling costs of \$68,000.00.

Please let me know if you require any other information.

Sincerely,



Peggy Bradfield
Regulatory Affairs

xc: Bureau of Land Management, Farmington
New Mexico Oil Conservation Division, Aztec District

Submit to Appropriate
District Office
State Lease - 4 copies
Fee Lease - 3 copies

State of New Mexico
Energy, Minerals and Natural Resources Department

Form C-102
Revised 1-1-89

OIL CONSERVATION DIVISION
P.O. Box 2088
Santa Fe, New Mexico 87504-2088

DISTRICT I
P.O. Box 1980, Hobbs, NM 88240

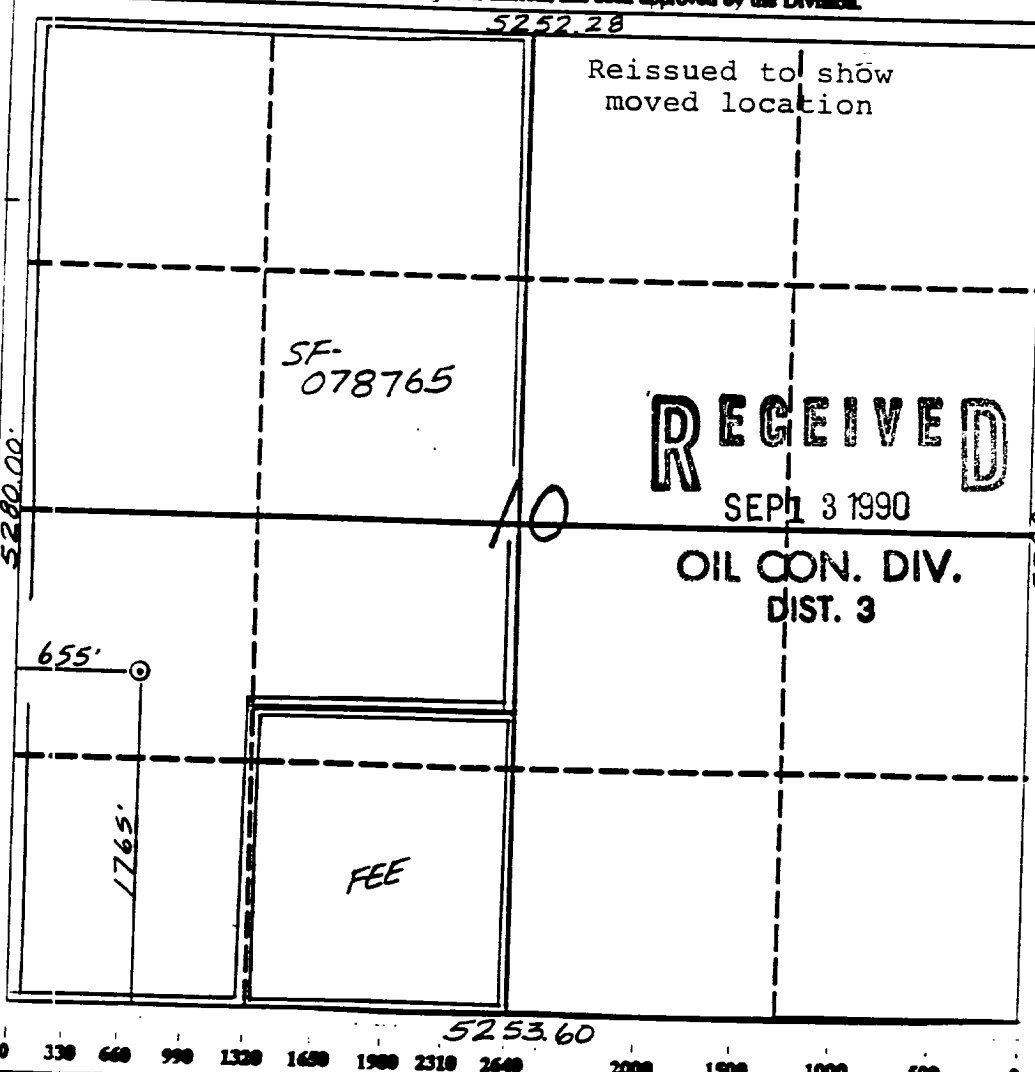
DISTRICT II
P.O. Drawer DD, Artesia, NM 88210

DISTRICT III
1000 Rio Brazos Rd., Aztec, NM 87410

WELL LOCATION AND ACREAGE DEDICATION PLAT
All Distances must be from the outer boundaries of the section

Operator Meridian Oil Inc.			Lease Rosa Unit (SF-078765)		Well No. 261
Unit Letter L	Section 10	Township 31 North	Range 6 West	County San Juan	
Actual Footage Location of Well: 1765 feet from the South line and 655 feet from the West line					
Ground level Elev. 6291'		Producing Formation Fruitland Coal		Pool Basin	Dedicated Acreage: 320 Acres

1. Outline the acreage dedicated to the subject well by colored pencil or hectare marks on the plat below.
2. If more than one lease is dedicated to the well, outline each and identify the ownership thereof (both as to working interest and royalty).
3. If more than one lease of different ownership is dedicated to the well, have the interest of all owners been consolidated by communitization, unitization, force-pooling, etc.?
☒ Yes ☐ No If answer is "yes" type of consolidation unitization
If answer is "no" list the owners and tract descriptions which have actually been consolidated. (Use reverse side of this form if necessary.)
No allowable will be assigned to the well until all interests have been consolidated (by communitization, unitization, force-pooling, or otherwise) or until a non-standard unit, eliminating such interest, has been approved by the Division.



OPERATOR CERTIFICATION

I hereby certify that the information contained herein is true and complete to the best of my knowledge and belief.

Signature Peggy Bradfield

Printed Name Peggy Bradfield

Position Regulatory Affairs

Company Meridian Oil Inc.

Date 8-7-90

SURVEYOR CERTIFICATION

I hereby certify that the well location shown on this plat was plotted from field notes, actual surveys made by me or under my supervision, and that the same is true and correct to the best of my knowledge and belief.

Date Surveyed 7-25-90

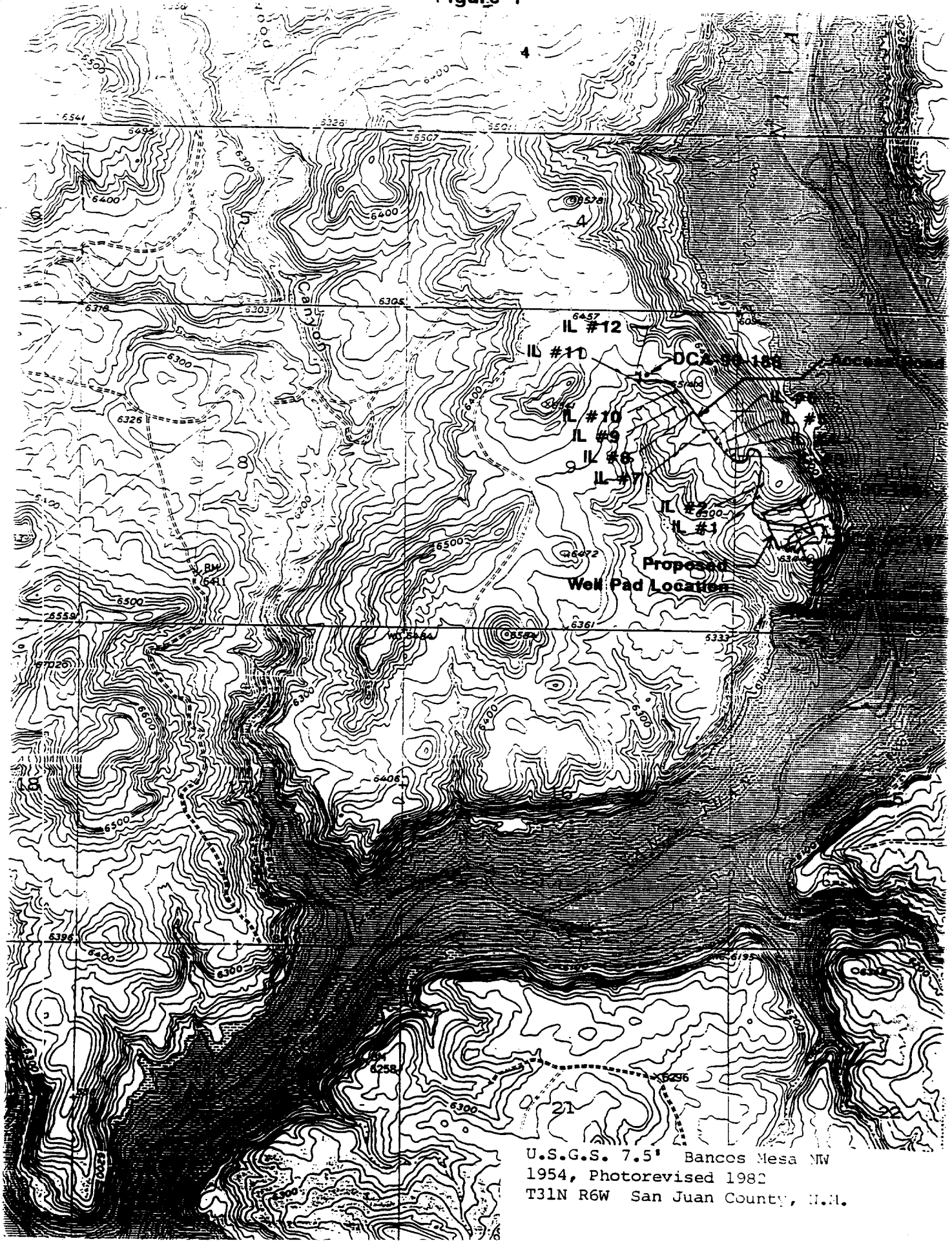
Signature [Signature]

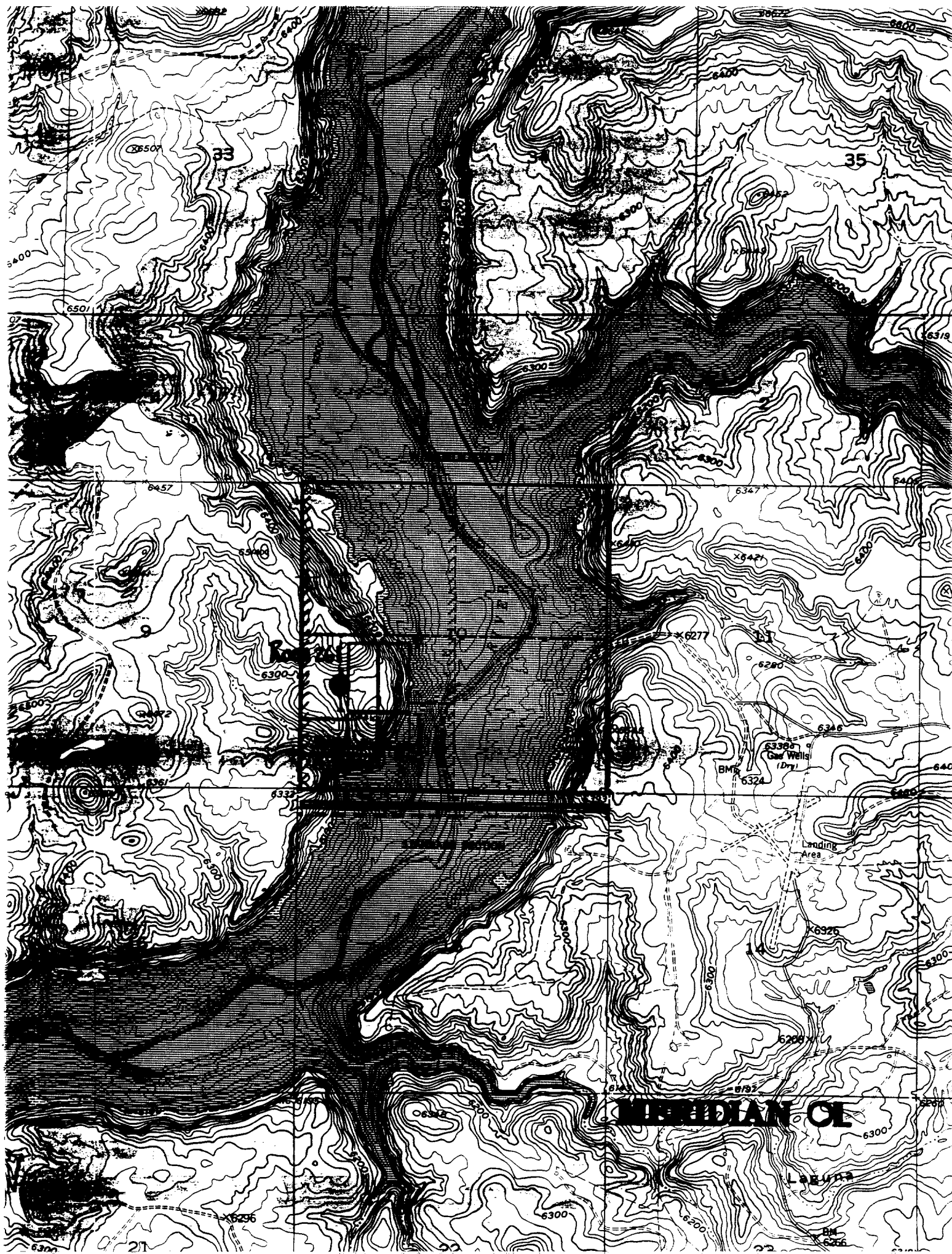
Professional Surveyor



Certificate No. Neale Edwards

Figure 1





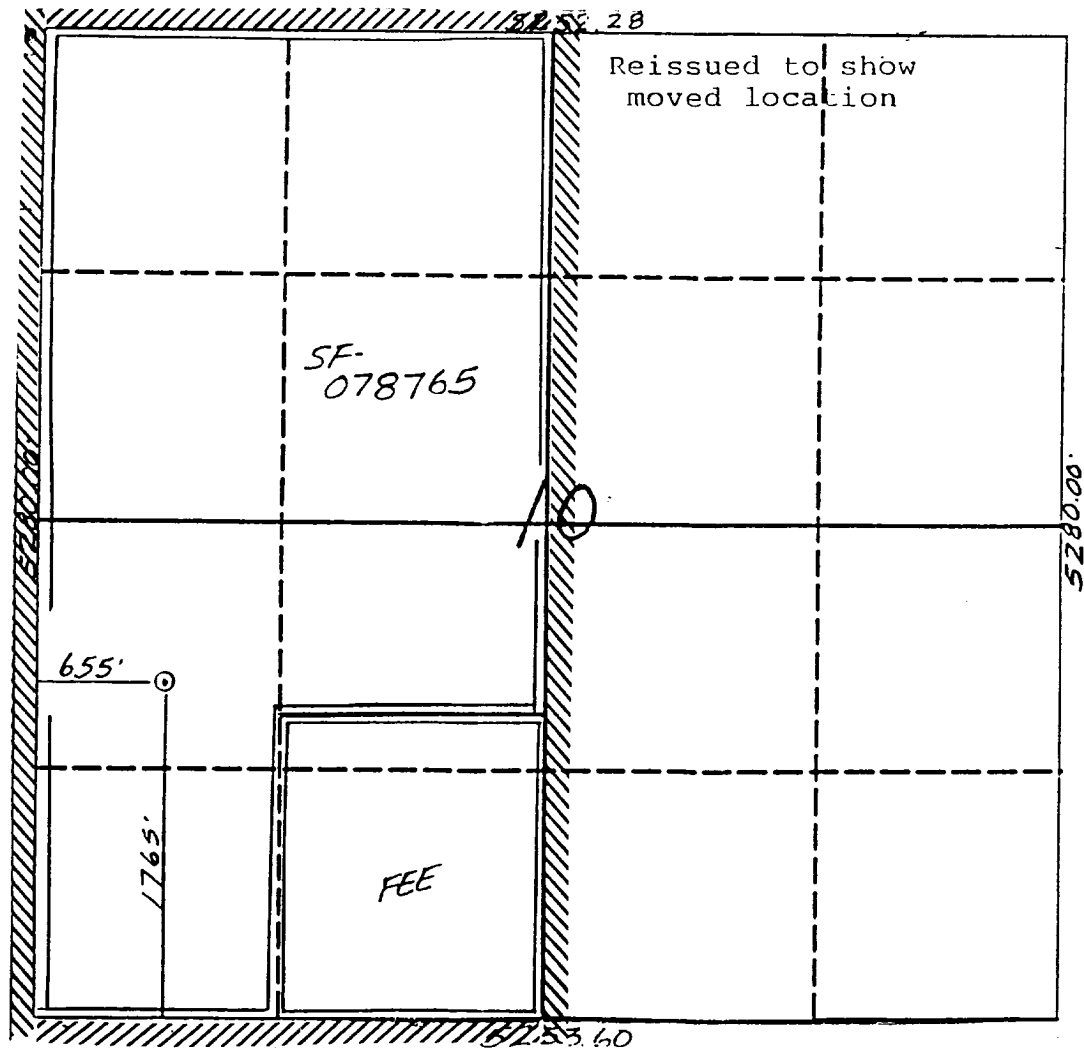
MERIDIAN OIL INC

Well Name Rosa Unit #261

Footage 1765' FSL, 655' FWL

APPLICATION FOR NON-STANDARD LOCATION

County San Juan State New Mexico Section 10 Township 31N Range 6W



Remarks All surrounding lands are within the Rosa Unit boundaries
Meridian Oil Inc., Operator

FIGURE 1

Proposed Rosa No. 261 well pad and access road on USGS 7.5' Bancos NW, New Mexico, 1954 (photorevised 1982) T31N, R6W, Section 10, N.M.P.M., San Juan County, New Mexico

