

UNITED STATES  
DEPARTMENT OF THE INTERIOR  
BUREAU OF LAND MANAGEMENT

30-045-28453  
APPLICATION FOR PERMIT TO DRILL, DEEPEN, OR PLUG BACK

RECEIVED  
NOV 23 1990

OIL CON. DIV.  
DIST. 3

RECEIVED  
DEC 3 1990

OIL CON. DIV.  
DIST. 3

- 1a. TYPE OF WORK  
DRILL
- 1b. TYPE OF WELL  
GAS
2. OPERATOR  
MERIDIAN OIL INC.
3. ADDRESS & PHONE NO. OF OPERATOR  
P O BOX 4289  
FARMINGTON, NM 87499
4. LOCATION OF WELL  
1550'FSL 790'FWL
5. LEASE NUMBER  
SF-078511
6. IF INDIAN, ALL. OR TRIBE NAME
7. UNIT AGREEMENT NAME
8. FARM OR LEASE NAME  
QUINN
9. WELL NO.  
341
10. FIELD, POOL, OR WILDCAT  
BASIN FRUITLAND COAL
11. SEC. T. R. M OR BLK.  
K SEC. 19 T31N R08W NMPM
12. COUNTY  
SAN JUAN
13. STATE  
NM
14. DISTANCE IN MILES FROM NEAREST TOWN  
8 miles from Navajo Dam
15. DISTANCE FROM  
PROPOSED LOCATION 790'  
TO NEAREST PROPERTY  
OR LEASE LINE.
16. ACRES IN LEASE  
2197.12
17. ACRES ASSIGNED TO WELL  
326.56
18. DISTANCE FROM  
PROPOSED LOCATION  
TO NEAREST WELL DR. 180'  
COMPL., OR APPLIED  
FOR ON THIS LEASE. This action is subject to technical and  
procedural review pursuant to 43 CFR 3165.3  
and appeal pursuant to 43 CFR 3165.4.
19. PROPOSED DEPTH  
2867'
20. ROTARY OR CABLE TOOLS  
ROTARY
21. ELEVATIONS (DF, FT, GR, ETC.)  
6020'GL
22. APPROX. DATE WORK WILL START

23. PROPOSED CASING AND CEMENTING PROGRAM

\*SEE OPERATIONS PLAN

24. AUTHORIZED BY: Charles J. JNC  
REG. DRILLING ENGR.

8/16/90  
DATE  
APPROVED  
AS AMENDED

PERMIT NO. \_\_\_\_\_ APPROVAL DATE \_\_\_\_\_

APPROVED BY \_\_\_\_\_ TITLE \_\_\_\_\_ DATE \_\_\_\_\_

NOV 02 1990  
AREA MANAGER

NOTE: THIS FORMAT IS ISSUED IN LIEU OF US BLM FORM 3160-3.

This well was staked at the same location as the Quinn #11 which had an  
approved APD on 06-05-89 and expired on 12-20-89. This location has already  
been built by Union Texas Petroleum.

# OIL CONSERVATION DIVISION

P.O. Box 2088  
Santa Fe, New Mexico 87504-2088

DISTRICT I  
P.O. Box 1980, Hobbs, NM 88240

DISTRICT II  
P.O. Drawer 00, Azusa, NM 88210

DISTRICT III  
1000 Rio Arriba Rd., Aztec, NM 87410

## WELL LOCATION AND ACREAGE DEDICATION PLAT

All Distances must be from the outer boundaries of the section

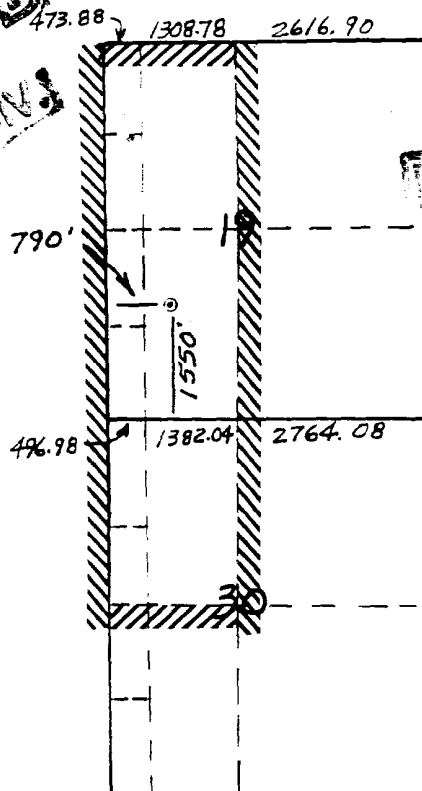
Operator Meridian Oil Inc.			Lease Quinn (SF-078511)		Well No. 341
U.S. Letter K	Section 19	Township 31 North	Range 8 West	County San Juan	
Acres Footage Location of Well: 1550 feet from the South line and 790 feet from the West line					
Ground level elev. 6020'		Producing Formation Fruitland Coal		Pool Basin	
				Dedicated Acreage 326.56	Acres

- Outline the acreage dedicated to the subject well by colored pencil or machine marks on the plat below.
- If more than one lease is dedicated to the well, outline each and identify the ownership thereof (both as to working interest and royalty).
- If more than one lease of different ownership is dedicated to the well, have the interests of all owners been consolidated by commutation, unitization, force-pooling, etc.?  
☐ Yes ☐ No If answer is "yes" type or consolidation

If answer is "no" list the owners and tract descriptions which have actually been consolidated. (Use reverse side of this form if necessary.)

No allowance will be assigned to the well until all interests have been consolidated (by commutation, unitization, force-pooling, or otherwise) or until a non-standard unit, comprising such interest, has been approved by the Division.

RECEIVED  
NOV 28 1990  
OIL CON. DIV.  
DIST. 3



RECEIVED  
DEC 5 1990  
OIL CON. DIV.  
DIST. 3

### OPERATOR CERTIFICATION

I hereby certify that the information contained herein is true and complete to the best of my knowledge and belief.

Signature  
Peggy Bradfield

Printed Name  
Regulatory Affairs

Position  
Meridian Oil Inc.

Company  
8-23-90

Date

### SURVEYOR CERTIFICATION

I hereby certify that the well location shown on this plat was plotted from field notes of actual surveys made by me or under my supervision, and that the same is true and correct to the best of my knowledge and belief.

7-2-90

Date Surveyed

Signature  
Professional Surveyor

Professional Surveyor  
6857  
6857

Certified Surveyor  
Neale G. Edwards

Well Name: 341 QUINN  
 Sec. 19 T31N R08W  
 BASIN FRUITLAND COAL

1550' FSL 790' FWL  
 SAN JUAN NEW MEXICO  
 Elevation 6020' GL

Formation tops: Surface- NACIMIENTO

Ojo Alamo- 1675

Kirtland- 1960

Fruitland- 2508

Fruitland Coal Top- 2707

Fruitland Coal Base- 2865

Pictured Cliffs- 2900

Intermediate TD- 2687

Total Depth- 2867

Logging Program: Mud logs from intermediate to total depth.

Mud Program:	Interval	Type	Weight	Visc.	Fl. Loss
	0 - 200	Spud	8.4 - 8.9	40-50	no control
	200 - 2687	Non-dispersed	8.4 - 9.1	30-60	no control
	2687 - 2867	Formation Water	8.4		no control

Casing Program:	Hole Size	Depth Interval	Csg. Size	Weight	Grade
	12 1/4"	0 - 200	9 5/8"	32.3#	H-40
	8 3/4"	0 - 2687	7"	20.0#	K-55
	6 1/4"	2637 - 2867	5 1/2"	15.5#	K-55
Tubing Program:		0 - 2867	2 7/8"	6.5#	J-55

Float Equipment: 9 5/8" surface casing - saw tooth guide shoe. Centralizers will be run in accordance with Onshore Order #2.

7" intermediate casing - guide shoe and self-fill insert float valve. Three centralizers run every other joint above shoe. Run insert float one joint above the guide shoe. Two turbolizing type centralizers - one below and one into the base of the Ojo Alamo @ 1960'. Standard centralizers thereafter every fourth joint up to the base of the surface pipe.

5 1/2" production casing - float shoe on bottom and a pre-drilled liner run to the 7" casing with a minimum 50' overlap. Liner hanger is a double slip grip type.

Wellhead Equipment: 9 5/8" x 7" x 2 7/8" x 11" 3000 psi xmas tree assembly.

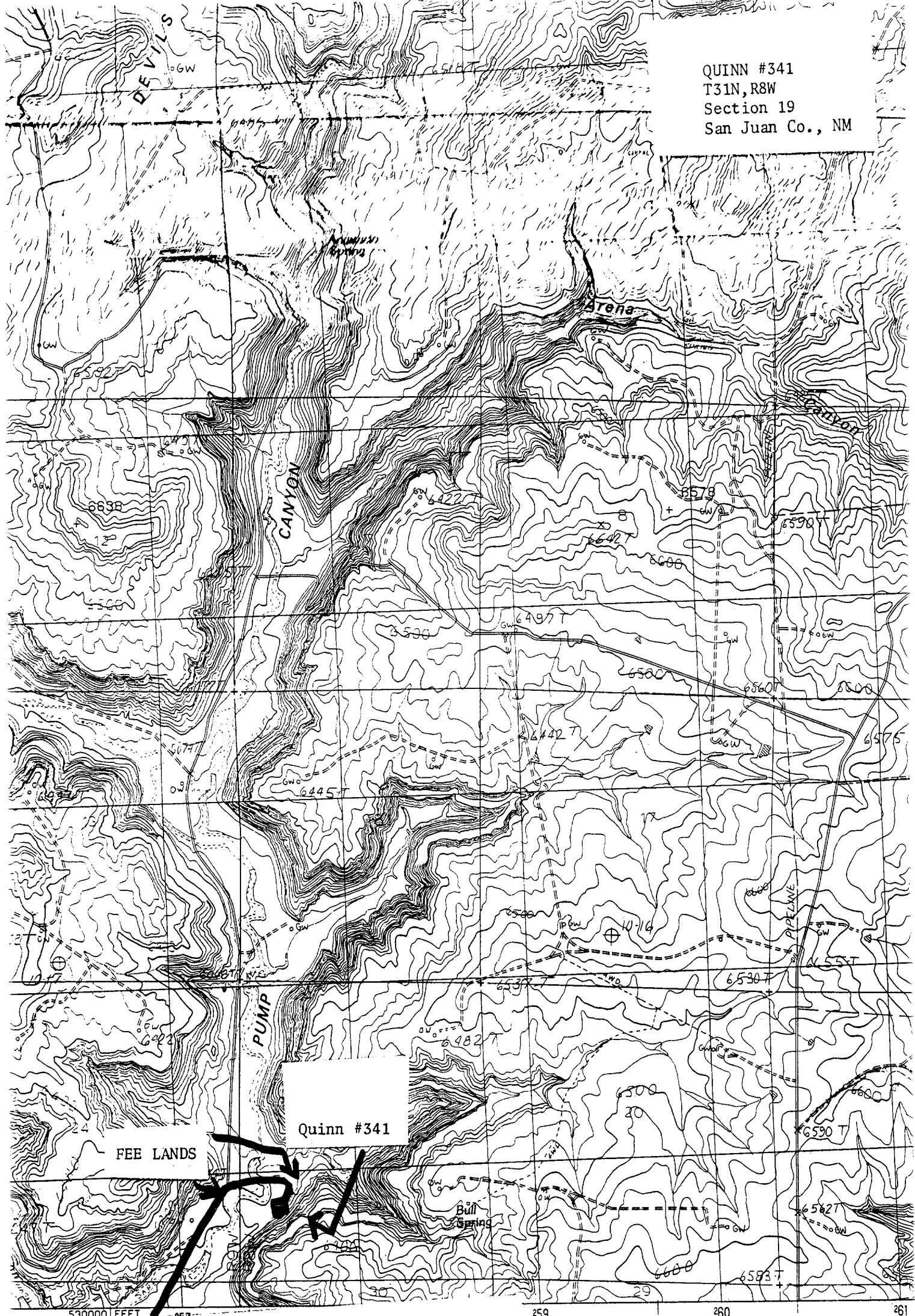
#### Cementing:

9 5/8" surface casing - cement with 160 sacks of class "B" cement with 1/4# flocele/sack and 3% calcium chloride (189 cu ft. of slurry, 200% excess to circulate to surface). WOC 12 hours. Test casing to 600 psi for 30 minutes.

7" intermediate casing - lead with 383 sacks of 65/35 class "B" poz with 6% gel, 2% calcium chloride and 1/2 cu ft. Perlite/sack (10.3 gallons of water/sack) tail with 100 sacks of class "B" with 2% calcium chloride. 858 cu ft. of slurry, 110% excess to circulate to surface. If hole conditions permit, a 600 ft spacer will be run ahead of the cement slurry to avoid mud contamination of the cement. WOC 12 hours. If cement does not circulate to surface, a temperature log will be run after 8 hours to determine TOC.

5 1/2" liner - do not cement.

QUINN #341  
T31N, R8W  
Section 19  
San Juan Co., NM



ACCESS TO THE SOUTH VIA APPLIED FOR ROW, STATE LANDS  
AND SAN JUAN COUNTY ROAD A 144.

MAP #1

