

30-045-24199

30-045-28494

Form C-101
Revised 1-1-65

NO. OF COPIES RECEIVED	
DISTRIBUTION	
SANTA FE	
FILE	
U.S.G.S.	
LAND OFFICE	
OPERATOR	

NEW MEXICO OIL CONSERVATION COMMISSION

5A. Indicate Type of Lease	
STATE <input type="checkbox"/>	FEE <input checked="" type="checkbox"/>
5. State Oil & Gas Lease No.	

APPLICATION FOR PERMIT TO DRILL, DEEPEN, OR PLUG BACK

1a. Type of Work		7. Unit Agreement Name	
b. Type of Well DRILL <input checked="" type="checkbox"/> DEEPEN <input type="checkbox"/> PLUG BACK <input type="checkbox"/> OIL WELL <input type="checkbox"/> GAS WELL <input checked="" type="checkbox"/> OTHER <input type="checkbox"/> SINGLE ZONE <input checked="" type="checkbox"/> MULTIPLE ZONE <input type="checkbox"/>		Rosa Unit	
2. Name of Operator Mendian Oil Inc. 14538		8. Farm or Lease Name Rosa Unit 7440	
3. Address of Operator P.O. Box 4287 3539 E. 30th Street - Farmington, NM 87401		9. Well No. #224	
4. Location of Well UNIT LETTER F LOCATED 1330' FEET FROM THE North LINE AND 1360' FEET FROM THE West LINE OF SEC. 8 TWP. 31N RGE. 6W NMPM		10. Field and Pool, or Wildcat 11629 Basin Fruitland Pool	
		12. County San Juan	
		19. Proposed Depth 3134'	
		19A. Formation Fruitland	
		20. Rotary or C.T. Rotary	
21. Elevations (Show whether DF, RT, etc.) 6340' GR		21A. Kind & Status Plug. Bond	
		21B. Drilling Contractor	
		22. Approx. Date Work will start 3-1-89	

PROPOSED CASING AND CEMENT PROGRAM

SIZE OF HOLE	SIZE OF CASING	WEIGHT PER FOOT	SETTING DEPTH	SACKS OF CEMENT	EST. TOP
12-1/4"	9-5/8"	32.3#	200'	125 cu. ft.	
8-3/4"	7"	20#	2934'	170 cu. ft.	
6-1/4"	5-1/2"	23#	3134'	Open hole Completion	
			2834'-3134'	None	

The N/2 of Section 8 is dedicated to this well.

APPROVAL EXPIRES 6-28-89
UNLESS DRILLING IS COMMENCED.
SPUD NOTICE MUST BE SUBMITTED
WITHIN 10 DAYS.

RECEIVED
DEC 23 1988
OIL CON. DIV.
DIST. 2

IN ABOVE SPACE DESCRIBE PROPOSED PROGRAM: IF PROPOSAL IS TO DEEPEN OR PLUG BACK, GIVE DATA ON PRESENT PRODUCTIVE ZONE AND PROPOSED NEW PRODUCTIVE ZONE. GIVE BLOWOUT PREVENTER PROGRAM, IF ANY.

I hereby certify that the information above is true and complete to the best of my knowledge and belief.

Signed Mike Turnbaugh Title Senior Engineer Date 12-19-88
(This space for State Use)

APPROVED BY Ernie Bursch TITLE DEPUTY OIL & GAS INSPECTOR, DIST. #3 DATE DEC 28 1988
CONDITIONS OF APPROVAL, IF ANY:
ch-1 Held C-104 For NSL

OIL CONSERVATION DIVISION

STATE OF NEW MEXICO
ENERGY AND MINERALS DEPARTMENT

P. O. BOX 2088

SANTA FE, NEW MEXICO 87501

Form C-102
Revised 10-1-78

All distances must be from the outer boundaries of the Section.

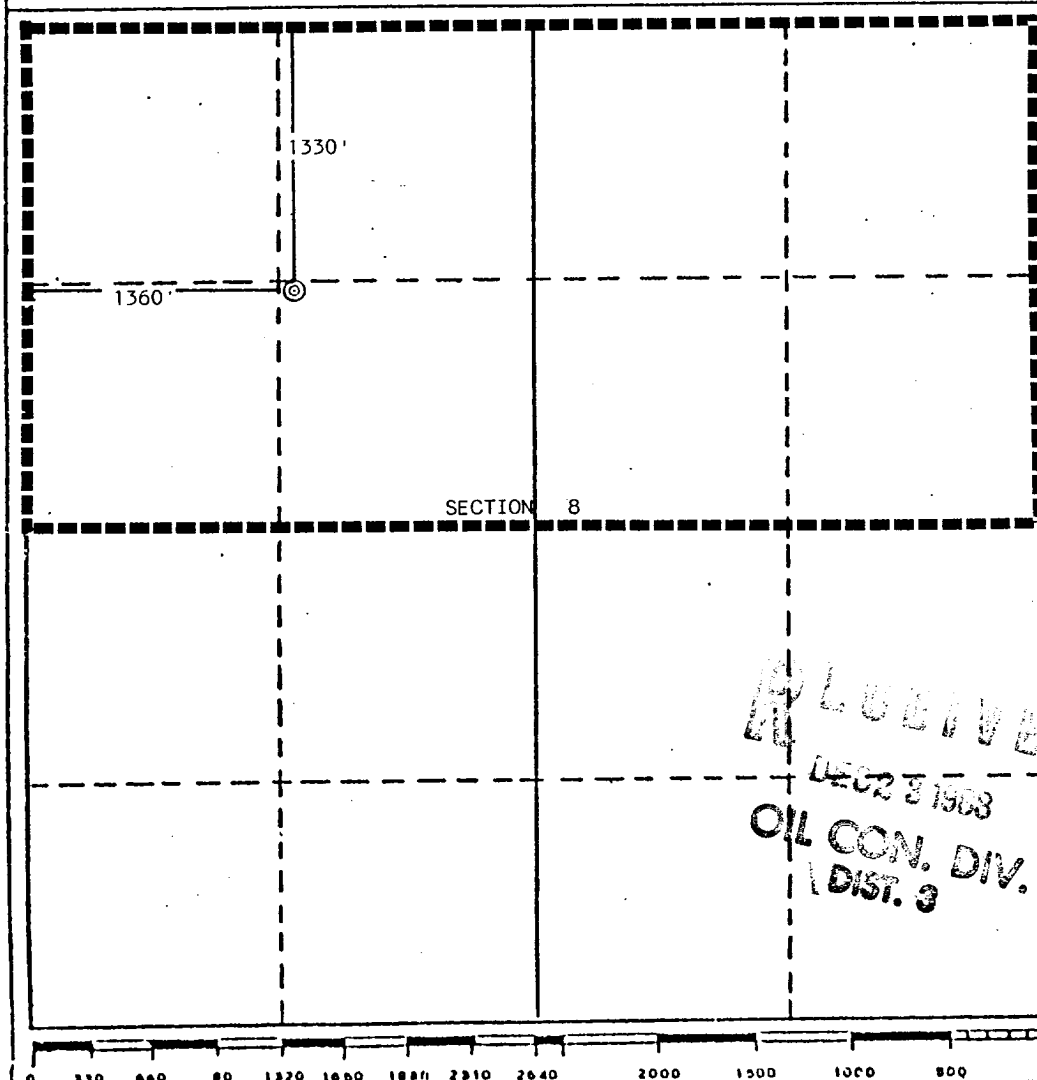
Operator Northwest Pipeline Corporation			Lease Rosa Unit		Well No. 224
Unit Letter F	Section 8	Township 31 North	Range 6 West	County San Juan	
Actual Footage Location of Well: 1330 feet from the North line and 1360 feet from the West line					
Ground Level Elev. 6340	Producing Formation Fruitland		Pool Basin Fruitland Pool		Dedicated Acreage: 320 Acres

1. Outline the acreage dedicated to the subject well by colored pencil or hatchure marks on the plat below.
2. If more than one lease is dedicated to the well, outline each and identify the ownership thereof (both as to working interest and royalty).
3. If more than one lease of different ownership is dedicated to the well, have the interests of all owners been consolidated by communitization, unitization, force-pooling, etc?

☒ Yes ☐ No If answer is "yes," type of consolidation unitization

If answer is "no," list the owners and tract descriptions which have actually been consolidated. (Use reverse side of this form if necessary.)

No allowable will be assigned to the well until all interests have been consolidated (by communitization, unitization, forced-pooling, or otherwise) or until a non-standard unit, eliminating such interests, has been approved by the Division.



CERTIFICATION

I hereby certify that the information contained herein is true and complete to the best of my knowledge and belief.

Name

Mike J. Turnbaugh

Position

Senior Engineer

Company

Northwest Pipeline Corp.

Date

11-1-88

I hereby certify that the location shown on this plat was located from field notes of actual survey made by me or under my supervision, and that the same is true and correct to the best of my knowledge and belief.

Date Surveyed

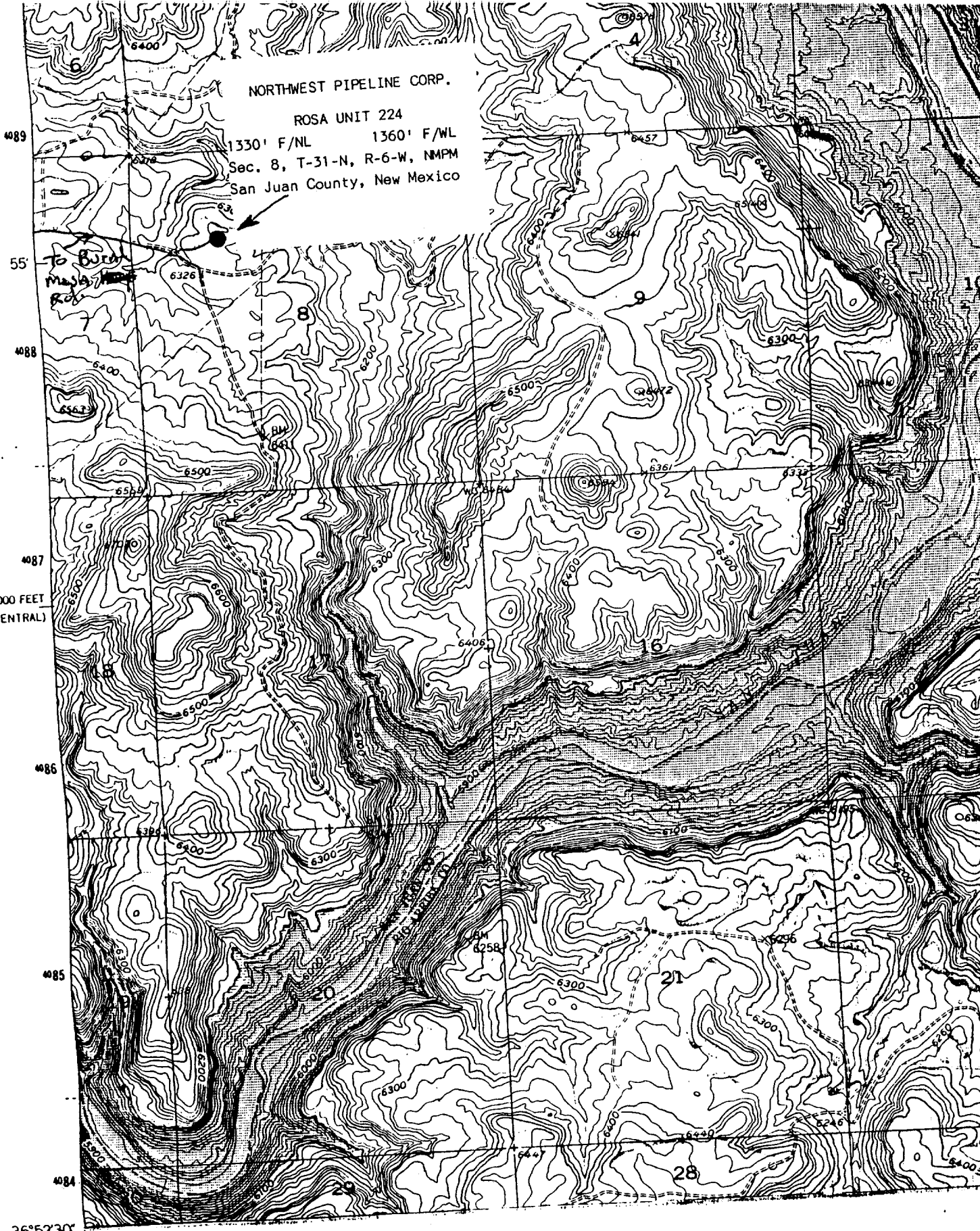
October 19, 1988

Registered Professional Engineer
and/or Land Surveyor

Certificate No.

5979

Edgar L. Risenhoover, L.S.



NORTHWEST PIPELINE CORP.

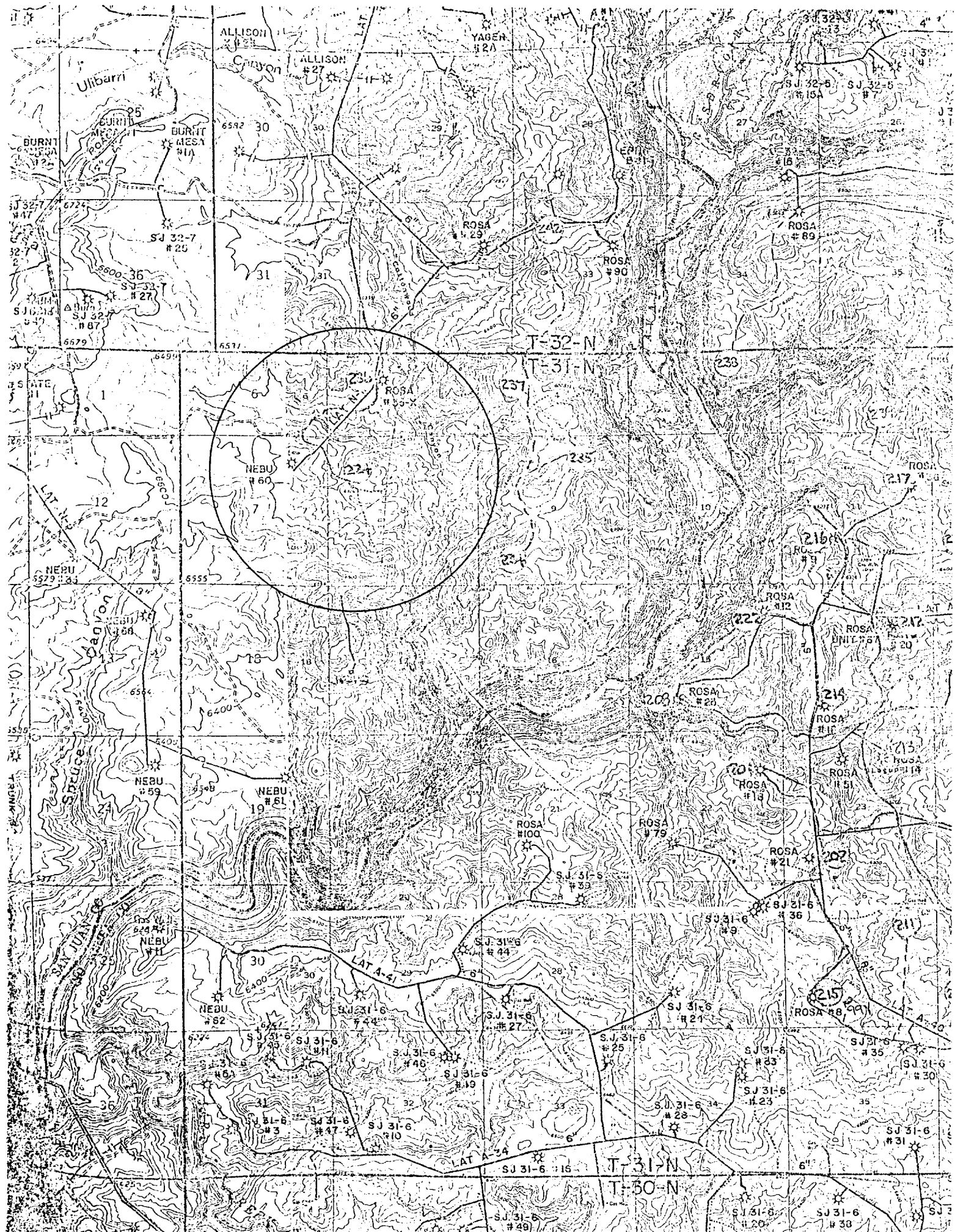
ROSA UNIT 224

1330' F/NL 1360' F/WL
Sec. 8, T-31-N, R-6-W, NMPM
San Juan County, New Mexico

To Burn
Mesa
Rosa

2 150 000 FEET
(CENTRAL)

36°52'30"



Submit to Appropriate -
District Office -
State Lease - 4 copies -
Fee Lease - 3 copies

State of New Mexico
Energy, Minerals and Natural Resources Department

Form C-102
Revised 1-1-80

OIL CONSERVATION DIVISION

P.O. Box 2088

Santa Fe, New Mexico 87504-2088

DISTRICT I

P.O. Box 1980, Hobbs, NM 88240

DISTRICT II

P.O. Drawer DD, Artesia, NM 88210

DISTRICT III

1000 Rio Brazos Rd., Aztec, NM 87410

WELL LOCATION AND ACREAGE DEDICATION PLAT

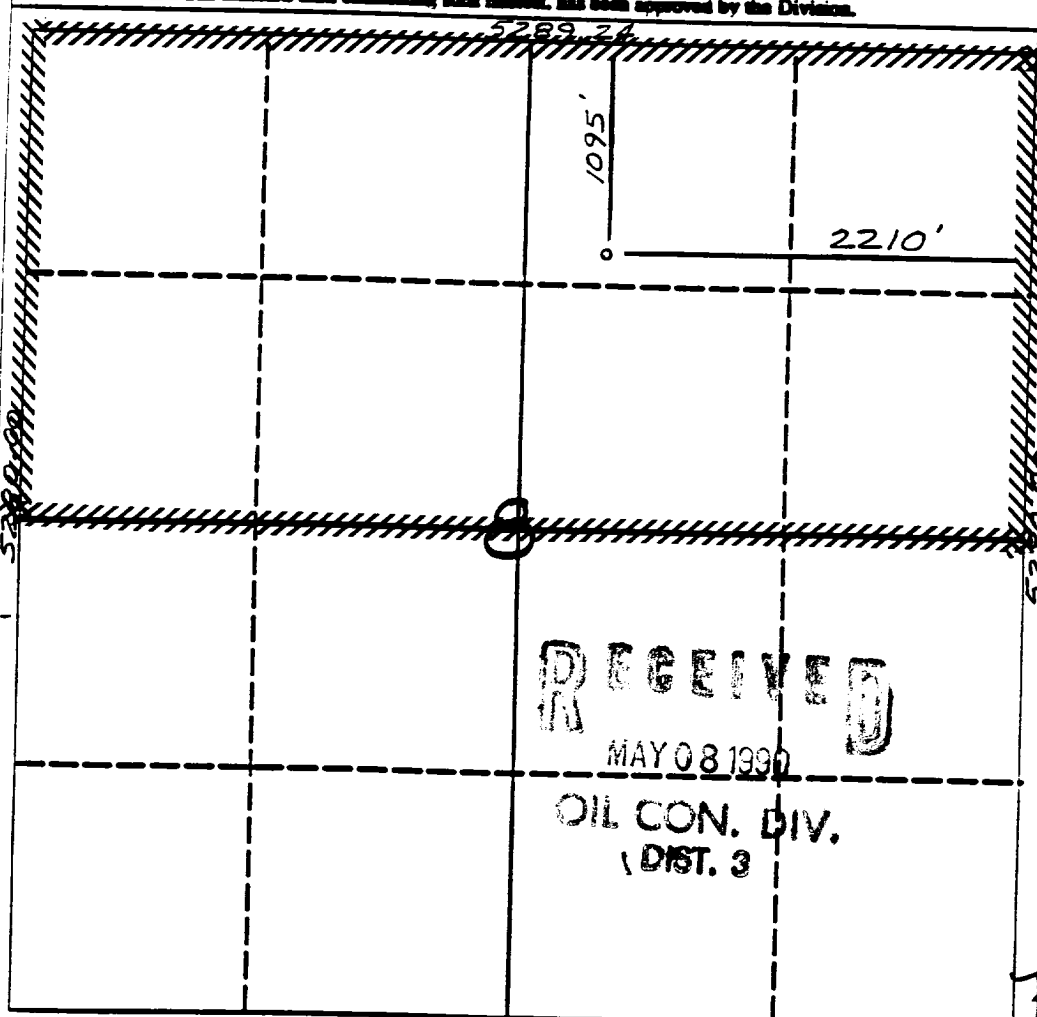
All Distances must be from the outer boundaries of the section

Operator Meridian Oil Inc.			Lease Rosa Unit (Fee)		Well No. 224
Unit Letter B	Section 8	Township 31 North	Range 6 West	County San Juan	
Actual Footage Location of Well: 1095 feet from the North line and 2210 feet from the East line					
Ground level Elev. 6229'		Producing Formation Fruitland Coal Basin		Dedicated Acreage: 320 Acres	

- Outline the acreage dedicated to the subject well by colored pencil or ink on the plat below.
- If more than one lease is dedicated to the well, outline each and identify the ownership thereof (both as to working interest and royalty).
- If more than one lease of different ownership is dedicated to the well, have the interest of all owners been consolidated by communitization, unitization, force-pooling, etc.?
☒ Yes ☐ No If answer is "yes" type of consolidation unitization

If answer is "no" list the owners and tract descriptions which have actually been consolidated. (Use reverse side of this form if necessary.)

No allowable will be assigned to the well until all interests have been consolidated (by communitization, unitization, force-pooling, or otherwise) or until a non-standard unit, eliminating such interest, has been approved by the Division.



OPERATOR CERTIFICATION

I hereby certify that the information contained herein is true and complete to the best of my knowledge and belief.

Signature
Peggy Bradfield

Printed Name
Peggy Bradfield

Position
Regulatory Affairs

Company
Meridian Oil Inc.

Date
5-4-90

Signature
Neale C. Edwards

Date
5-4-90

Signature
Neale C. Edwards

Date
5-4-90

SURVEYOR CERTIFICATION

I hereby certify that the well location shown on this plat was plotted from field notes of actual surveys made by me or under my supervision, and that the same is true and correct to the best of my knowledge and belief.

Signature
Neale C. Edwards

Date
5-4-90

Signature
Neale C. Edwards

Date
5-4-90

Signature
Neale C. Edwards

Date
5-4-90

Signature
Neale C. Edwards

Date
5-4-90

State of New Mexico
Energy, Minerals and Natural Resources Department

Form C-101

OIL CONSERVATION DIVISION
P.O. Box 2088
Santa Fe, New Mexico 87504-2088

C-103
APPLICATION FOR PERMIT TO DRILL, DEEPEN,
OR PLUG BACK

API NO. (assigned by OCD on new well)

5. Indicate Type of Lease

FEE

6. State Oil & Gas Lease No.

1a. Type of Work

DRILL

b. Type of Well

GAS

SINGLE ZONE

7. Lease Name or Unit Agreement Na
ROSA UNIT

RECEIVED

MAY 08 1990

OIL CON. DIV.

2. Name of Operator

MERIDIAN OIL INC.

8. Well No.

224

3. Address of Operator

PO Box 4289, Farmington, NM 87499

9. Pool Name or Wildcat

BASIN FRUITLAND COAL

4. Well Location

Unit letter B 1095' FNL 2210' FEL

Section 8 T31N R06W NMPM RIO ARriba COUNTY

10. Proposed Depth
3016'

11. Formation
FRUITLAND COAL

12. Rotary or C.T
Rotary

13. Elevation
6229' GL

14. Bond Type
statewide

15. Drill. Contractor

16. Est. Start Date
upon approval

17. PROPOSED CASING AND CEMENT PROGRAM

SIZE HOLE	SIZE CASING	WT. PER FT.	SET. DEPTH	SKS OF CEMENT	EST. TOP
12 1/4"	9 5/8"	32.3#	200 ft.	189 cu.ft.	circ surface
8 3/4"	7"	20.0#	2820 ft.	900 cu.ft.	circ surface
6 1/4"	5 1/2"	15.5#	3016 ft.	do not cmt.	

The Fruitland Coal formation will be completed.
A minimum 2000 psi working pressure double gate blowout preventer
equipped with blind and pipe rams will be used for blow out prevention
on this well. This gas is dedicated.
The N/2 of Sec 8 is dedicated to this well.

I hereby certify that the information above is true and complete to the best
of my knowledge and belief.

SIGNATURE [Signature]

TITLE Reg. Drilling Engr. DATE 5/4/90

(This space for State Use)

APPROVED BY [Signature]
Conditions of approval, if any:

DEPUTY OIL & GAS INSPECTOR, DIST. #3

DATE MAY 15 1990

State of New Mexico
Energy, Minerals and Natural Resources Department

Form C-100

OIL CONSERVATION DIVISION
P.O. Box 2088
Santa Fe, New Mexico 87504-2088

SUNDRY NOTICES AND REPORTS ON WELLS	API NO. (assigned by OCD on:)
-----	5. Indicate Type of Lease FEE
	6. State Oil & Gas Lease No.
1a. Type of Well GAS	7. Lease Name or Unit Agreement No. ROSA UNIT
2. Name of Operator MERIDIAN OIL INC.	8. Well No. 224
3. Address of Operator PO Box 4289, Farmington, NM 87499	9. Pool Name or Wildcat BASIN FRUITLAND COAL
4. Well Location Unit letter F 1095' FNL 2210' FEL Section <u>6</u> T31N R06W NMPM RIO ARRIBA COUNTY	
10. Elevation 6229'	
11. SUBSEQUENT REPORT OF: SPUD	
12. Describe proposed or completed operations	

RECEIVED
OCT 17 1990

OIL CON. DIV.
DIST. 3

SPUD DATE: 100390 SPUD TIME: 1445

TD 239', Ran 5 jts of 9 5/8" 36.0# K-55 casing, 216' set @ 2.5"
Cemented with 160 sacks of Class B cement with 1/4#
Flocele/sack and 3% calcium chloride, (189 cu ft.).
Circulated 8 bbl to surface. WOC 12 hours.
Pressure tested to 600 psi for 30 minutes. Held OK.

DATE: 100690

TD 2820', Ran 66 jts of 7" 20.0# K-55 casing, 2808' set @ 28"
Lead with 410 sacks of Class B cement 65/35 Poz, 6% gel,
5# gilsonite/sack, 2% CaCl2, 1/4# Flocele/sack (730 cu ft.).
Tail with 100 sacks of Class B cement with 2% CaCl2,
(118 cu ft.). Temperature survey indicates TOC @ 175'.
WOC 18 hours.

SIGNATURE [Signature] TITLE Regulatory Affairs DATE 10-17
=====

(This space for State Use)

APPROVED BY ORIGINAL SIGNED BY ERNIE BUSCH
Conditions of approval, if any: TITLE DEPUTY OIL & GAS INSPECTOR, DIST. #3 DATE OCT 17 1990