

UNITED STATES
DEPARTMENT OF THE INTERIOR

BUREAU OF LAND MANAGEMENT *30-045-28703*

APPLICATION FOR PERMIT TO DRILL, DEEPEN, OR PLUG BACK

1a. TYPE OF WORK
 DRILL DEEPEN PLUG BACK

b. TYPE OF WELL
 OIL WELL GAS WELL OTHER SWD SINGLE ZONE MULTIPLE ZONE

2. NAME OF OPERATOR
 Phillips Petroleum Company *✓ 17654*

3. ADDRESS OF OPERATOR
 5525 Hwy 64, NBU 3004, Farmington, NM 87401

4. LOCATION OF WELL (Report location clearly and in accordance with any State requirements.)
 At surface Unit E, 1762' FNL & 708' FWL
 At proposed prod. zone Same as above

14. DISTANCE IN MILES AND DIRECTION FROM NEAREST TOWN OR POST OFFICE*
 Approximately 20 miles southeast of Ignacio, CO.

10. DISTANCE FROM PROPOSED* LOCATION TO NEAREST PROPERTY OR LEASE LINE, FT. (Also to nearest drig. unit line, if any)
 16. NO. OF ACRES IN LEASE 880 Acres

18. DISTANCE FROM PROPOSED LOCATION* TO NEAREST WELL, DRILLING, COMPLETED, OR APPLIED FOR, ON THIS LEASE, FT. 9450'
 17. NO. OF ACRES ASSIGNED TO THIS WELL 0

21. ELEVATIONS (Show whether DF, RT, or other) *6643' GI (Unprepared)*
 22. APPROX. DATE WORK WILL START* Upon Approval

23. PROPOSED CASING AND CEMENTING PROGRAM

SIZE OF HOLE	SIZE OF CASING	WEIGHT PER FOOT	SETTING DEPTH
20"	16"	65#, J-55	400'
13-1/2"	10-3/4"	51#, L-80	3800'
9-1/2"	7-5/8"	26.4#, C-95	3600'-7300'
6-1/2"	5-1/2", 4-1/2"	17#, 11.6#, C-95	7300' & 9450'

DRILLING OPERATIONS AUTHORIZED ARE SUBJECT TO COMPLIANCE WITH ATTACHED "GENERAL REQUIREMENTS"
 915 Sx Cl B, Circ to Surface
 See Attachment I, Circ to Surface
 See Attachment I, Circ to Liner Top
 See Attachment I

RECEIVED
JUL 02 1992

OIL CON. DIV.,
DIST. 3

7/16 - CALLED LR.
 SRUD TODAY OR TOMORROW AM
 RICHARD ALLRED - DRILLING SUPERVISOR
 DAVID STONESTREET - ENGINEER
 dkf

IN ABOVE SPACE DESCRIBE PROPOSED PROGRAM: If proposal is to deepen or plug back, give data on present productive zone and proposed new productive zone. If proposal is to drill or deepen directionally, give pertinent data on subsurface locations and measured and true vertical depths. Give blowout preventer program, if any.

24. SIGNED *L. E. Robinson* TITLE Sr. Drlg. & Prod. Engr. DATE May 26, 1992
 Lewis Robinson

(This space for Federal or State office use)
 PERMIT NO. _____ APPROVAL DATE _____
 APPROVED BY _____ TITLE _____
 CONDITIONS OF APPROVAL, IF ANY:

APPROVED
AS AMENDED
JUN 26 1992

Need SWD order
 *See Instructions On Reverse Side
 NMOCD PROGRAM

MANAGER
 RECEIVED
 BLM
 MAY 27 11:10:10
 RECEIVED

RECEIVED

SEP 26 1952

MAIL CONTROL DIVISION
DIST 3

SEP 26 1952

SEP 26 1952
MAIL CONTROL DIVISION
DIST 3

Submit to Appropriate District Office
 State Lease - 4 copies
 Fee Lease - 3 copies

State of New Mexico
 Energy, Minerals and Natural Resources Department

Form C-102
 Revised 1-1-89

OIL CONSERVATION DIVISION
 P.O. Box 2088
 Santa Fe, New Mexico 87504-2088

RECEIVED
 BLM

92 MAY 27 AM 10:10

DISTRICT I
 P.O. Box 1980, Hobbs, NM 88240

DISTRICT II
 P.O. Drawer DD, Artesia, NM 88210

DISTRICT III
 1000 Rio Brazos Rd., Aztec, NM 87410

WELL LOCATION AND ACREAGE DEDICATION PLAT
 All Distances must be from the outer boundaries of the section

515 FARMINGTON, N.M.

Operator PHILLIPS PETROLEUM		Lease SAN JUAN 32-8 UNIT		Well No. 303 SWD
Unit Letter E	Section 14	Township T.31 N.	Range R.8 W.	County SAN JUAN
Actual Footage Location of Well: 1762 feet from the NORTH line and 708 feet from the WEST line				
Ground level Elev. 6643	Producing Formation Morrison-Entrada-Bluff	Pool Undes. Morrison-Entrada-Bluff	Dedicated Acreage: 0 Acres	

- Outline the acreage dedicated to the subject well by colored pencil or hatchure marks on the plat below.
- If more than one lease is dedicated to the well, outline each and identify the ownership thereof (both as to working interest and royalty).
- If more than one lease of different ownership is dedicated to the well, have the interest of all owners been consolidated by communitization, unitization, force-pooling, etc.?

 Yes No If answer is "yes" type of consolidation _____

If answer is "no" list the owners and tract descriptions which have actually been consolidated. (Use reverse side of this form if necessary.)

No allowable will be assigned to the well until all interests have been consolidated (by communitization, unitization, forced-pooling, or otherwise) or until a non-standard unit, eliminating such interest, has been approved by the Division.

OPERATOR CERTIFICATION

I hereby certify that the information contained herein is true and complete to the best of my knowledge and belief.

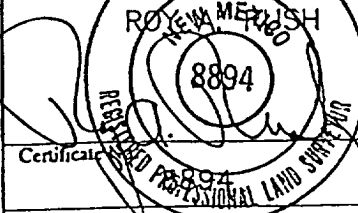
Signature
L. E. Robinson
 Printed Name
L. E. Robinson
 Position
Sr. Drlg. & Prod. Engr.
 Company
Phillips Petroleum Co.
 Date
May 26, 1992

SURVEYOR CERTIFICATION

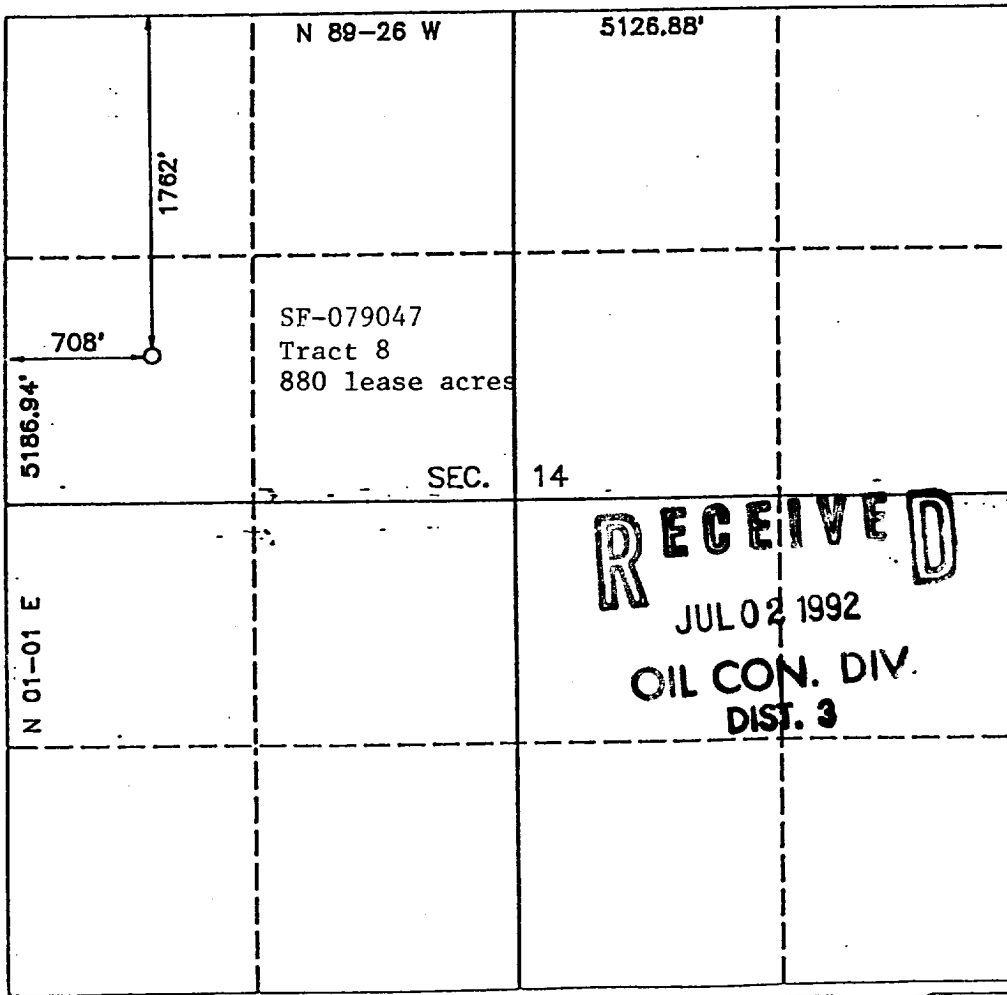
I hereby certify that the well location shown on this plat was plotted from field notes of actual surveys made by me or under my supervision, and that the same is true and correct to the best of my knowledge and belief.

Date Surveyed
APRIL 30, 1992

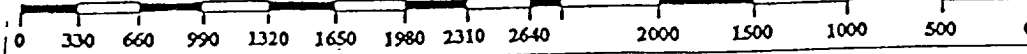
Signature & Seal
ROY A. RUSH
 Professional Surveyor

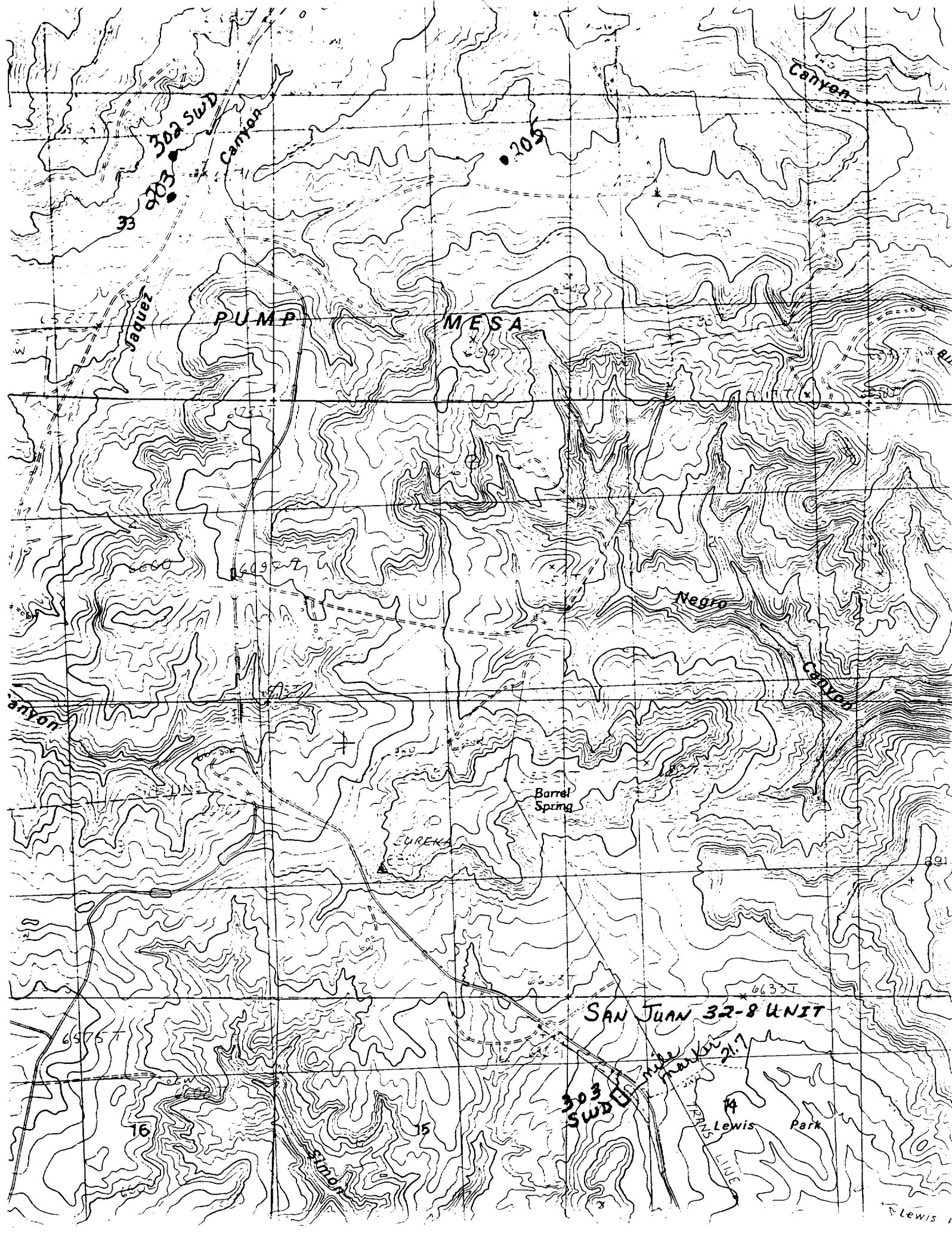


Certificate No. _____



RECEIVED
JUL 02 1992
OIL CON. DIV.
DIST. 3





33

302 SWD

Canyon

205

Canyon

SECT

Jaquez

PUMP

MESA

Negro

Canyon

Canyon

Barrel Spring

EUREKA

SAN JUAN 32-8 UNIT

303 SWD

mile marker 21.7

74

Lewis Park

16

15

Simon

LINE

Lewis

San Juan 32-8 #303 SWD
1726 FNL & 694 FWL
NW 14 T31N-R8W
San Juan Co., New Mexico
6643' GL; 6662' KB(est.)

The following PRELIMINARY geologic tops for the referenced water disposal well are based on the above location and an estimated KB of 6662 ft.

<u>FORMATION</u>	<u>EST. DEPTH (ft)</u>
San Jose Ss.	Surface
Ojo Alamo Ss.	2230
Kirtland Sh.	2370
Fruitland Fm.	3200
Top of Fruitland Coal	3330
Base of Fruitland Coal	3450
Pictured Cliffs Ss.	3460
Lewis Sh.	3690
Cliff House Ss.	5490
Menefee Fm.	5540
Point Lookout Ss.	5850
Mancos Sh.	6250
Gallup Ss. Member	6860
Greenhorn Ls. Member	7880
Graneros Sh. Member	Datum (-1273) 7935
Dakota Ss.	8085
Morrison Fm.	8330
Bluff Ss.	8875
Summerville Fm.	9025
Todilto Ls.	9125
Entrada Ss.	9150
Chinle Fm.	9400
TD	9450

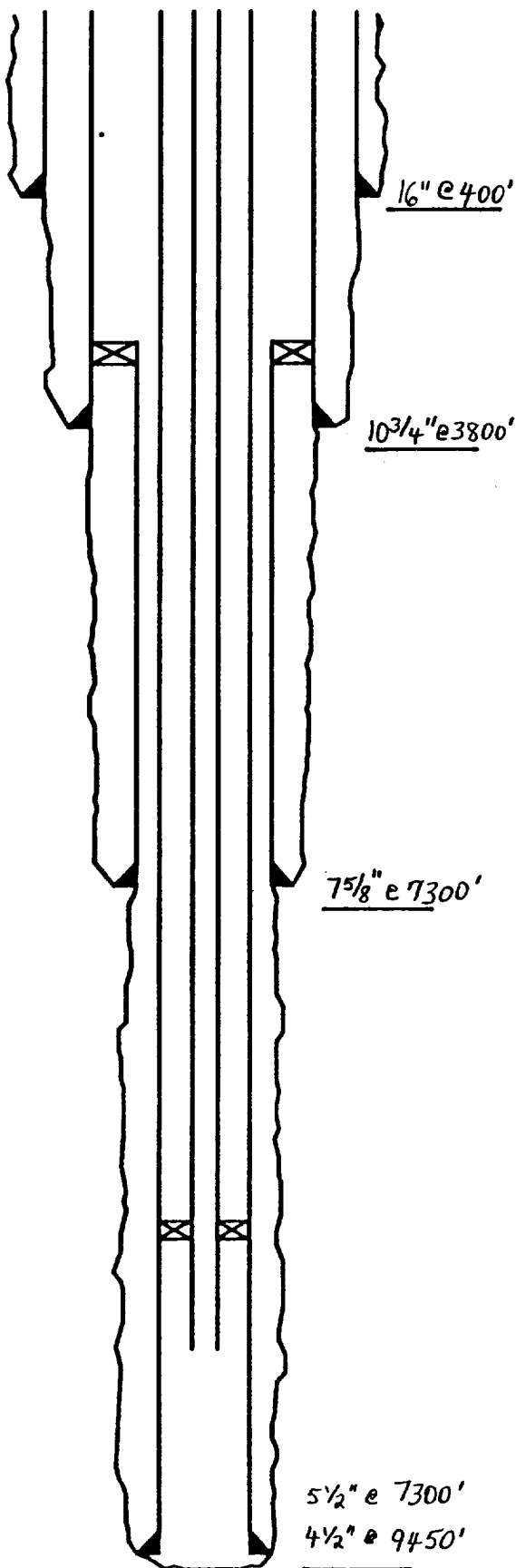
The PRELIMINARY geologic tops are subject to change. There will be a continual monitoring of the tops and proposed TD during drilling operations. The purpose here has been to provide tops for the APD.

Ralph L. Hawks Jr.
May 12, 1992

**Phillips Petroleum Company
Farmington Area**

Unit/Well No. : 32-8 # 303 SWD Location : _____
 Datum of specified depths : _____ Spud Date : _____
 Date Completion began : _____ Final Date of Completion : _____

SAN JUAN 32-8 # 303 SWD : PROPOSED



Casing/Tubulars Program

	Size (in)	Grade	Setting Depth (ft)
Conductor	16" ; 65 #/ft	J-55	400'
Surface	10 3/4" ; 51 #/ft	L-80	3800'
Intermediate Liner	7 5/8" ; 26.4 #/ft	C-95	Top 3600' Bottom 7300'
Production	5 1/2" ; 17 #/ft	C-95	7300'
	4 1/2" ; 11.6 #/ft	C-95	9450'
Tubing	2 7/8" ; 6.5 #/ft	N-80	8300'

Cement Program

	Lead	Tail	Comments
Conductor	665 sxs CL "B" @ 15.6 ppq 1.18 #/sx	250 sxs CL "B" w/ 3% CaCl ₂ @ 15.6 ppq ; 1.19 #/sx	Circulate cement to surface
Surface	See Attachment I	See Attachment I	Circulate cement to surface
Intermediate	See Attachment I	See Attachment I	Circulate cement to top of liner
Production	See Attachment I	See Attachment I	Circulate cement above 7 5/8" liner shoe

ATTACHMENT I: CEMENTING PROGRAMS

10-3/4" CASING:

Cement I = 65:35 (Class "B":Fly Ash) with 6% Bentonite, 10 lb/sx Gilsonite and 2% KCl (by weight of mix water); 12.4 ppg & 1.87 ft³/sx.

Cement II = Class "B" Neat cement @ 15.6 ppg & 1.18 ft³/sx.

Two stage cement job with stage tool set at approximately 2700'.

First Stage: Lead: 120 Sxs Cement I
 Tail: 200 Sxs Cement II

Second Stage: Lead: 560 Sxs Cement I
 Tail: 200 Sxs Cement II

7-5/8" CASING:

Lead: 275 Sxs 50:50 (Class "B":Fly Ash) with 2% Bentonite, 0.8% Halad-9 (Fluid Loss), 1/4 lb/sx Flocele and 2% KCl (by weight of mix water); 13.6 ppg & 1.26 ft³/sx.

Tail: 200 Sxs Class "B" cement with 0.8% Halad-9 (Fluid Loss), 0.4% CFR-3 (Friction Reducer) and 1/4 lb/sx Flocele; 15.6 ppg & 1.18 ft³/sx.

5-1/2" & 4-1/2" CASING:

700 Sxs Class "G" cement with 40% Silica Flour (Fine-Grained), 0.6% Halad-423 (Fluid Loss), 0.2% CFR-2 (Friction Reducer), 0.2% HR-12 (High Temperature Retardent) and 6 lbs/sx Gilsonite; 15.5 ppg & 1.62 ft³/sx.

**PROPOSED DRILLING MUD PROGRAM
SAN JUAN 32-8 UNIT #303 SWD**

SURFACE TO 3800':

Spud with fresh water and Bentonite. Add Soda Ash, DRISPAC, Caustic Soda, and DESCO as necessary to treat calcium, minimize fluid loss, control pH and clean hole accordingly. Displace 10-3/4" casing cement job with fresh water circulating the drilling fluid into frac tanks for future use (i.e. from 7800' to 9450').

FROM 3800' to 7800':

Drill out the 10-3/4" casing shoe and all but 5' of the cement with water, then blow the hole dry with air and drill out the remaining few feet with air and continue to drill to 7800' or til the hole gets wet.

FROM 7800' to 9450':

Displace the hole with stored and fresh drilling mud as needed to condition the hole and continue drilling to T.D., maintaining drilling mud properties as recommended by drilling mud contractor.