

F

30-045-28417

11-08-90

F. Loc. 878/N; 1328/E Elev. 6570 GL Spd. _____ Cu. ft. _____ Cu. ft. _____ PB _____
 Casing S. _____ @ _____ W _____ Sx. Int. _____ @ _____ W _____ Sx. Pr. _____ @ _____ W _____ Sx. T. _____ @ _____
 Csg. Perf. _____ Prod. Stim. _____

T
R
A
N
S

BO/D _____ Grav. _____ 1st Del. Gas
 MCF/D After _____ Hrs. SICP _____ PSI After _____ Days GOR _____ 1st Del. Oil

TOPS	NITD	Well Log	TEST DATA						
Ojo Alamo	C-103	Plat <u>X</u>	Schd.	PC	Q	PW	PD	D	Ref. No.
Kirtland	C-104	Electric Log							
Fruitland		C-122							
Pictured Cliffs	Ditr	Dfa							
Chacra	Dotr	Dac							
Cliff House	E/316.15 Acres								
McNefee									
Point Lookout									
Mancos									
Gallup									
Greenhorn									
Dakota									
Entrado									

P
o
o

BasinFrCoalCo. SJ S 03 T 31N R 09W U B Oper. Phillips Pet. Co. Lse. San Juan 31 Fed. 3 No. 1



United States Department of the Interior

BUREAU OF LAND MANAGEMENT
Farmington Resource Area
1235 Laplata Highway
Farmington, New Mexico 87401



IN REPLY REFER TO
SF-080133 (WC)
3162.3-1.0 (019)

DEC. 3 1991

RECEIVED
DEC 04 1991
OIL CON. DIV.
DIST. 3

Phillips Petroleum Company
5525 Hwy 64 NBU 3004
Farmington, NM 87401

Gentlemen:

Enclosed is your Application for Permit to Drill (APD) well No.1 San Juan 31 Federal 3, NW/4NE/4 sec. 3, T. 31 N., R. 9 W., San Juan County, New Mexico, lease SF-080133. The subject APD is rescinded and returned due to drilling not being commenced within one year of the approval date.

You are required to request surface rehabilitation instructions from this office if construction activities occurred on the referenced drill site. If this office does not receive comment within 30 days, we will presume that no construction occurred and proceed accordingly. Later discovery that construction activities have in fact occurred, may result in assessment of liquidated damages.

Sincerely,

John L. Keller

John L. Keller
Chief, Branch of Mineral Resources

1 Enclosure

cc:
New Mexico Oil Conservation Division, Aztec, NM

ABANDONED LOCATION

UNITED STATES
DEPARTMENT OF THE INTERIOR
BUREAU OF LAND MANAGEMENT

SUBMIT IN TRIPLICATE*
(Other instructions on
reverse side)

Form approved.
Budget Bureau No. 1004-0136
Expires August 31, 1985

APPLICATION FOR PERMIT TO DRILL, DEEPEN, OR PLUG BACK

1a. TYPE OF WORK

DRILL ☒

DEEPEN ☐

PLUG BACK ☐

b. TYPE OF WELL

OIL
WELL ☐

GAS
WELL ☐

OTHER

SINGLE
ZONE ☐

MULTIPLE
ZONE ☐

2. NAME OF OPERATOR

Northwest Pipeline Corporation

3. ADDRESS OF OPERATOR

3539 East 30th Street - Farmington, NM 87401

4. LOCATION OF WELL (Report location clearly and in accordance with any State requirements.)*

At surface

878' FNL & 1328' FEL Unit B

At proposed prod. zone

14. DISTANCE IN MILES AND DIRECTION FROM NEAREST TOWN OR POST OFFICE*

Approximately 7.2 miles east of Cedar Hill, NM

15. DISTANCE FROM PROPOSED*

LOCATION TO NEAREST
PROPERTY OR LEASE LINE, FT.
(Also to nearest drlg. unit line, if any)

878'

18. DISTANCE FROM PROPOSED LOCATION*

TO NEAREST WELL, DRILLING, COMPLETED,
OR APPLIED FOR, ON THIS LEASE, FT.

+5000'

21. ELEVATIONS (Show whether DF, RT, GR, etc.)

6570' GR

This action is subject to technical and

23. ~~procedural review pursuant to 43 CFR 3165.3~~
and appeal pursuant to 43 CFR 3165.4.

SIZE OF HOLE	SIZE OF CASING	WEIGHT PER FOOT	SETTING DEPTH	GENERAL REQUIREMENTS
12-1/4"	9-5/8"	36# K-55	200'	120 sx (143 cu.ft.)
8-3/4"	7"	23# K-55	3175'	435 sx (835 cu.ft.)
6-1/4"	5-1/2"	23#	2975'-3440'	open hole

1) Plan to drill Fruitland from 3210' to 3432' and set liner in open hole. If open hole proves unproductive, the 5-1/2" liner will be changed to 15.5#, K-55, cemented and hydraulically stimulated as necessary.

2) The E/2 of Section 3 is dedicated to this well.

RECEIVED
NOV 08 1990
OIL CON. DIV.
DIST. 3

IN ABOVE SPACE DESCRIBE PROPOSED PROGRAM: If proposal is to deepen or plug back, give data on present productive zone and proposed new productive zone. If proposal is to drill or deepen directionally, give pertinent data on subsurface locations and measured and true vertical depths. Give blowout preventer program, if any.

24.

SIGNED

Mike Turnbaugh
Mike Turnbaugh

TITLE

Production Superintendent

DATE

8-31-90

(This space for Federal or State office use)

PERMIT NO.

APPROVAL DATE

APPROVED BY

TITLE

DATE

Ken Townsend

CONDITIONS OF APPROVAL, IF ANY:

FOR

*See Instructions On Reverse Side

Title 18 U.S.C. Section 1001, makes it a crime for any person knowingly and willfully to make to any department or agency of the United States any false, fictitious or fraudulent statements or representations as to any matter within its jurisdiction.

Submit to Appropriate
District Office
State Lease - 4 copies
Fee Lease - 3 copies

State of New Mexico
Energy, Minerals and Natural Resources Department

Form C-102
Revised 1-1-89

OIL CONSERVATION DIVISION

P.O. Box 2088
Santa Fe, New Mexico 87504-2088

DISTRICT I
P.O. Box 1980, Hobbs, NM 88240

DISTRICT II
P.O. Drawer DD, Artesia, NM 88210

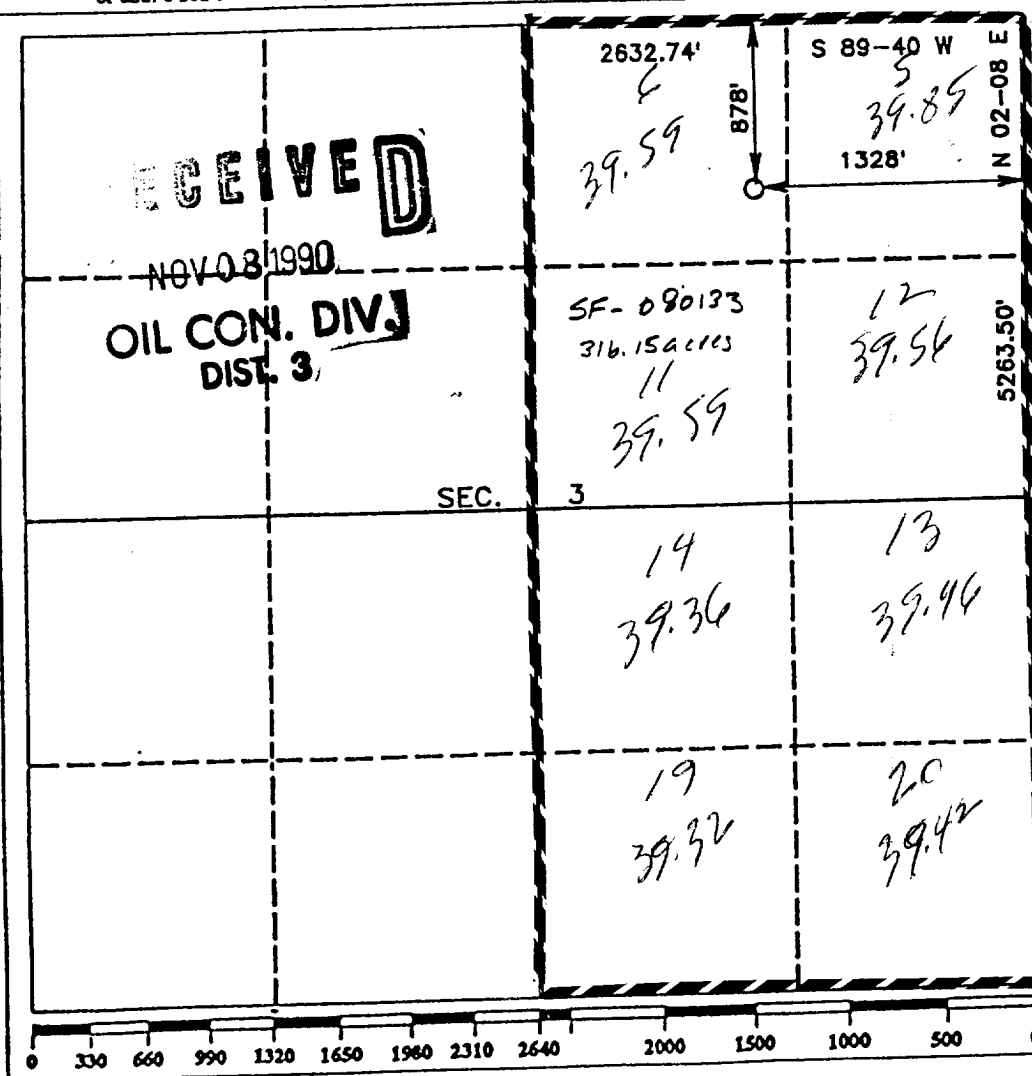
DISTRICT III
1000 Rio Brazos Rd., Aztec, NM 87410

WELL LOCATION AND ACREAGE DEDICATION PLAT

All Distances must be from the outer boundaries of the section

Operator NORTHWEST PIPELINE CORPORATION			Lease SAN JUAN 31 FEDERAL 3		Well No. 1
Unit Letter B	Section 3	Township T.31 N.	Range R.9 W.	County SAN JUAN COUNTY	
Actual Footage Location of Well: 878 feet from the NORTH line and 1328 feet from the EAST line					
Ground level Elev. 6570	Producing Formation FRUITLAND		Pool BASIN FRUITLAND COAL	Dedicated Acreage: 316.15 Acres	

1. Outline the acreage dedicated to the subject well by colored pencil or hatchure marks on the plat below.
2. If more than one lease is dedicated to the well, outline each and identify the ownership thereof (both as to working interest and royalty).
3. If more than one lease of different ownership is dedicated to the well, have the interest of all owners been consolidated by communitization, unitization, force-pooling, etc.?
☐ Yes ☐ No If answer is "yes" type of consolidation _____
If answer is "no" list the owners and tract descriptions which have actually been consolidated. (Use reverse side of this form if necessary.)
No allowable will be assigned to the well until all interests have been consolidated (by communitization, unitization, forced-pooling, or otherwise) or until a non-standard unit, eliminating such interest, has been approved by the Division.



OPERATOR CERTIFICATION
I hereby certify that the information contained herein is true and complete to the best of my knowledge and belief.

Signature
Mike Turnbaugh

Printed Name
MIKE TURNBAUGH

Position
PRODUCTION SUPERINTENDENT

Company
NORTHWEST PIPELINE CORP.

Date
AUGUST 28, 1990

SURVEYOR CERTIFICATION

I hereby certify that the well location shown on this plat was plotted from field notes of actual surveys made by me or under my supervision, and that the same is true and correct to the best of my knowledge and belief.

Date Surveyed
JULY 1990

Signature & Seal
Professional Surveyor

R. EDWARD DAGGETT

Certificate No. 18673

Registered Professional
Land Surveyor

