

~~CONFIDENTIAL~~

SUBMIT IN TRIPLICATE*
(Other instructions on
reverse side)

Form approved.
Budget Bureau No. 1004-0136
Expires August 31, 1985

UNITED STATES
DEPARTMENT OF THE INTERIOR
BUREAU OF LAND MANAGEMENT

APPLICATION FOR PERMIT TO DRILL, DEEPEN, OR PLUG BACK

1a. TYPE OF WORK

DRILL ☒

DEEPEN ☐

PLUG BACK ☐

b. TYPE OF WELL

OIL
WELL ☐

GAS
WELL ☐

OTHER Coalbed Methane

SINGLE
ZONE ☒

MULTIPLE
ZONE ☐

2. NAME OF OPERATOR 303/298-1400

1331-17th St., Suite 710

J.K. Edwards Associates Inc. 11307 Denver, CO 80202

3. ADDRESS OF OPERATOR 303/452-8888

13585 Jackson Drive

Permitco Inc. - Agent

Denver, CO 80241

4. LOCATION OF WELL (Report location clearly and in accordance with any State requirements.)*

At surface

1080' FNL and 1490' FEL

At proposed prod. zone

NW NE Sec. 8

14. DISTANCE IN MILES AND DIRECTION FROM NEAREST TOWN OR POST OFFICE*

6 miles northeast of Farmington, NM

15. DISTANCE FROM PROPOSED*

LOCATION TO NEAREST
PROPERTY OR LEASE LINE, FT.
(Also to nearest drlg. unit line, if any)

1080

16. NO. OF ACRES IN LEASE

640

17. NO. OF ACRES ASSIGNED
TO THIS WELL

320

18. DISTANCE FROM PROPOSED LOCATION*
TO NEAREST WELL, DRILLING, COMPLETED,
OR APPLIED FOR, ON THIS LEASE, FT.

600

19. PROPOSED DEPTH

2080

20. ROTARY OR CABLE TOOLS

Rotary

21. ELEVATIONS (Show whether DF, RT, GR, etc.)

5816' GR

22. APPROX. DATE WORK WILL START*

Immediately upon approval

23. PROPOSED CASING AND CEMENTING PROGRAM

of this application.

SIZE OF HOLE	SIZE OF CASING	WEIGHT PER FOOT	SETTING DEPTH	DRILLING OPERATIONS AUTHORIZED ARE
12-1/4"	8-5/8"	24#	300'	SUBJECT TO COMPETENCE WITH ATTACHED
7-7/8"	5-1/2"	14#	2080'	GENERAL REQUIREMENTS TO circ to surf.
				400 sx or suffic to circ to surf.

J.K. Edwards Associates Inc. proposes to drill a well to 2080' to test the Fruitland Coal formation for Coalbed Methane. If productive, casing will be run and the well completed. If dry, the well will be plugged and abandoned as per BLM and State of New Mexico requirements.

See Onshore Order No. 1 attached.

J.K. Edwards Associates Inc. has been designated by proper lease interest owners to conduct operations on the above mentioned lease. Bonding will be provided by J.K. Edwards Associates Inc.

RECEIVED
JAN 23 1993

IN ABOVE SPACE DESCRIBE PROPOSED PROGRAM: If to test, deepen, or plug back, give data on present productive zone and proposed new productive zone. If proposal is to drill or deepen directionally, give pertinent data on subsurface locations and measured and true vertical depths. Give blowout prevention program, if any.

24. SIGNED [Signature] TITLE J.K. Edwards Assoc. Inc.

DATE 11/19/92

(This space for Federal or State office use)

**APPROVED
AS AMENDED**

PERMIT NO. _____

APPROVAL DATE _____

APPROVED BY _____

TITLE _____

CONDITIONS OF APPROVAL, IF ANY:

NMOCD

DEC 30 1992

AREA MANAGER

*See Instructions On Reverse Side

Submit to Appropriate
District Office
State Lease - 4 copies
Fee Lease - 3 copies

State of New Mexico
Energy, Minerals and Natural Resources Department

Form C-102
Revised 1-1-89

OIL CONSERVATION DIVISION

P.O. Box 2088
Santa Fe, New Mexico 87504-2088

DISTRICT I
P.O. Box 1980, Hobbs, NM 88240

DISTRICT II
P.O. Drawer DD, Artesia, NM 88210

DISTRICT III
1000 Rio Brazos Rd., Aztec, NM 87410

WELL LOCATION AND ACREAGE DEDICATION PLAT

All Distances must be from the outer boundaries of the section

Operator J.K. Edwards Associates			Lease Federal 8 FC		Well No. #1
Unit Letter B	Section 8	Township 30 N.	Range 12 W.	County San Juan	
Actual Footage Location of Well: 1080 feet from the North line and 1490 feet from the East line					
Ground level Elev. 5816'		Producing Formation Fruitland Coal		Dedicated Acreage: 320 Acres	

1. Outline the acreage dedicated to the subject well by colored pencil or hatchure marks on the plat below.

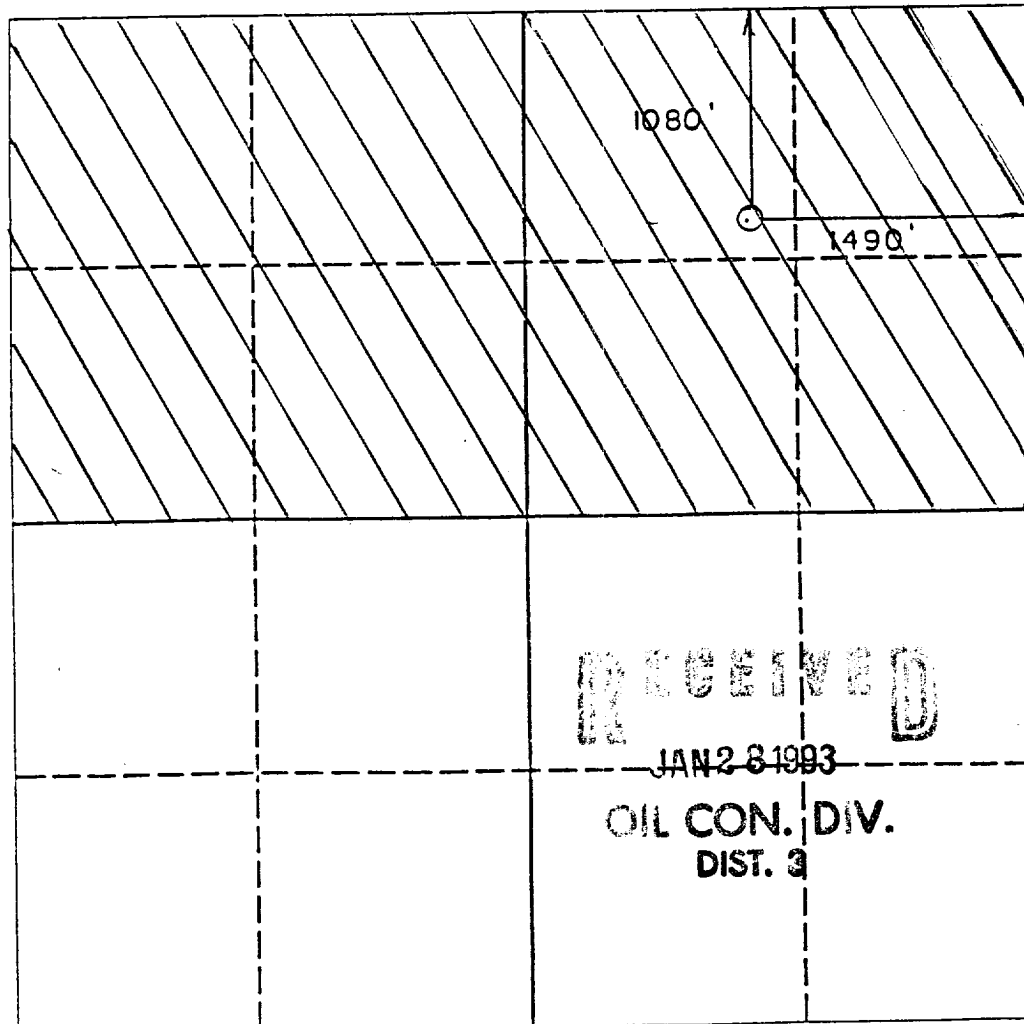
2. If more than one lease is dedicated to the well, outline each and identify the ownership thereof (both as to working interest and royalty). **100% Federal**

3. If more than one lease of different ownership is dedicated to the well, have the interest of all owners been consolidated by communitization, unitization, force-pooling, etc.?

☐ Yes ☐ No If answer is "yes" type of consolidation _____

If answer is "no" list the owners and tract descriptions which have actually been consolidated. (Use reverse side of this form if necessary.)

No allowable will be assigned to the well until all interests have been consolidated (by communitization, unitization, forced-pooling, or otherwise) or until a non-standard unit, eliminating such interest, has been approved by the Division.



OPERATOR CERTIFICATION

I hereby certify that the information contained herein is true and complete to the best of my knowledge and belief.

Signature

Printed Name

Lisa L. Smith

Position

Authorized Agent for:

Company

J.K. Edwards Associates Inc

Date

11/19/92

SURVEYOR CERTIFICATION

I hereby certify that the well location shown on this plat was plotted from field notes of actual surveys made by me or under my supervision, and that the same is true and correct to the best of my knowledge and belief.

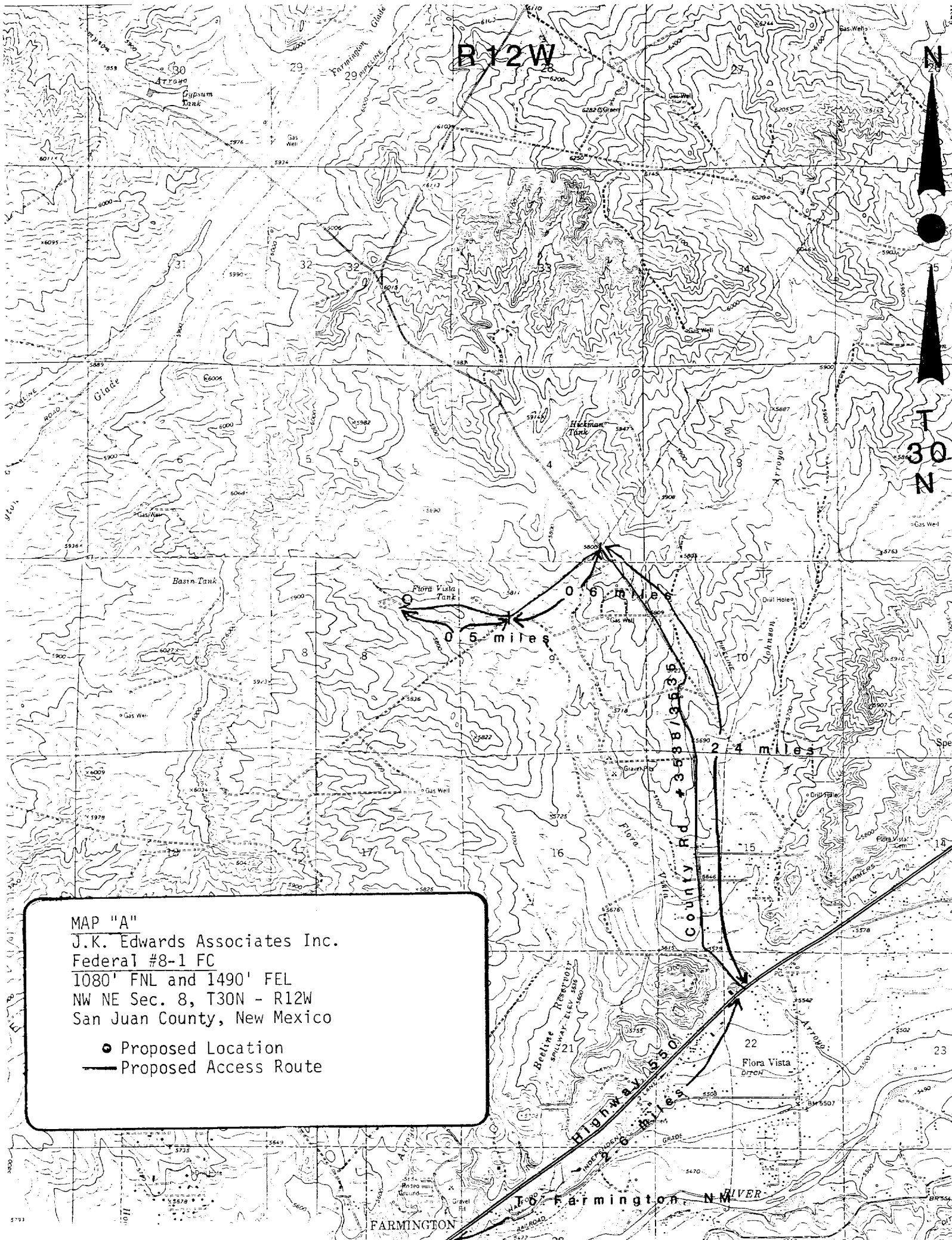
Date Surveyed

Signature

Professional Surveyor

6844

Certificate No.



MAP "A"

J.K. Edwards Associates Inc.

Federal #8-1 FC

1080' FNL and 1490' FEL

NW NE Sec. 8, T30N - R12W

San Juan County, New Mexico

● Proposed Location

— Proposed Access Route