

CONFIDENTIAL - TIGHT HOLE
UNITED STATES

SUBMIT IN TRIPPLICATE*
(Other instructions on reverse side)

Form approved.
Budget Bureau No. 1004-0136
Expires August 31, 1985

DEPARTMENT OF THE INTERIOR

BUREAU OF LAND MANAGEMENT 30-045-2893P

APPLICATION FOR PERMIT TO DRILL, DEEPEN, OR PLUG BACK

1a. TYPE OF WORK
 DRILL DEEPEN PLUG BACK

b. TYPE OF WELL
 OIL WELL GAS WELL OTHER Coalbed Methane SINGLE ZONE MULTIPLE ZONE

2. NAME OF OPERATOR 214/701-9106 5400 LBJ Freeway, Suite 500
 Texakoma Oil & Gas Corporation Dallas, TX 75240

3. ADDRESS OF OPERATOR 303/452-8888 13585 Jackson Drive
 Permitco Inc. - Agent Denver, CO 80241

4. LOCATION OF WELL (Report location clearly and in accordance with any State requirements.)*
 At surface 1140' FNL and 2360' FEL
 At proposed prod. zone NW NE Sec. 20

14. DISTANCE IN MILES AND DIRECTION FROM NEAREST TOWN OR POST OFFICE*
 3.5 miles north of Farmington, New Mexico

15. DISTANCE FROM PROPOSED* LOCATION TO NEAREST PROPERTY OR LEASE LINE, FT. (Also to nearest drig. unit line, if any) 1140'

16. NO. OF ACRES IN LEASE 1401.009
 435.11

17. NO. OF ACRES ASSIGNED TO THIS WELL N / 320 ✓

18. DISTANCE FROM PROPOSED LOCATION* TO NEAREST WELL, DRILLING, COMPLETED, OR APPLIED FOR, ON THIS LEASE, FT. approx. 200'

19. PROPOSED DEPTH 2200'

20. ROTARY OR CABLE TOOLS Rotary

21. ELEVATIONS (Show whether DF, BT, GR, etc.) 5749' GR ✓
 *This section is subject to technical and procedural review pursuant to 43 CFR 3105.3 and appeal pursuant to 43 CFR 3105.4

22. APPROX. DATE WORK WILL START* Upon approval of this application

23. PROPOSED CASING AND CEMENTING PROGRAM

SIZE OF HOLE	SIZE OF CASING	WEIGHT PER FOOT	SETTING DEPTH	QUANTITY OF CEMENT ATTACHED
12-1/4"	8-5/8"	24#	300'	225' sx or suffic to circ to surf.
7-7/8"	5-1/2"	14#	2200'	500' sx or suffic to circ to surf.

Texakoma Oil & Gas Corporation proposes to drill a well to 2200' to test the Fruitland Coal formation for Coalbed Methane. If productive, casing will be run and the well completed. If dry, the well will be plugged and abandoned as per BLM and State of New Mexico requirements.

See Onshore Order No. 1 attached.

Texakoma Oil & Gas Corporation has been designated by proper lease interest owners to conduct operations on the above mentioned lease. Bonding will be provided by Texakoma Oil & Gas Corporation.

RECEIVED
MAR 10 1993
OR CON. DIV.

SEE ATTACHED FOR CONDITIONS OF APPROVAL

IN ABOVE SPACE DESCRIBE PROPOSED PROGRAM: If proposal is to deepen or plug back, give data on present productive zone and proposed new productive zone. If proposal is to drill or deepen directionally, give pertinent data on subsurface locations and measured and true vertical depths. Give blowout preventer program, if any.

24. SIGNED [Signature] TITLE Consultant for Texakoma Oil & Gas Corp. DATE 2/23/93

(This space for Federal or State office use)

PERMIT NO. _____ APPROVAL DATE _____

APPROVED AS AMENDED

APPROVED BY _____ TITLE _____ DATE _____
 CONDITIONS OF APPROVAL, IF ANY:

[Signature]

[Signature]

MAR 11 1993
DISTRICT MANAGER

*See Instructions On Reverse Side

Chronic
Disease
Management
Program

Page 1 of 1

OIL CONSERVATION DIVISION

P.O. Box 2088
Santa Fe, New Mexico 87504-2088

Submit to Appropriate
District Office
State Lease - 4 copies
Fee Lease - 3 copies

DISTRICT I
P.O. Box 1980, Hobbs, NM 88240

DISTRICT II
P.O. Drawer DD, Artesia, NM 88210

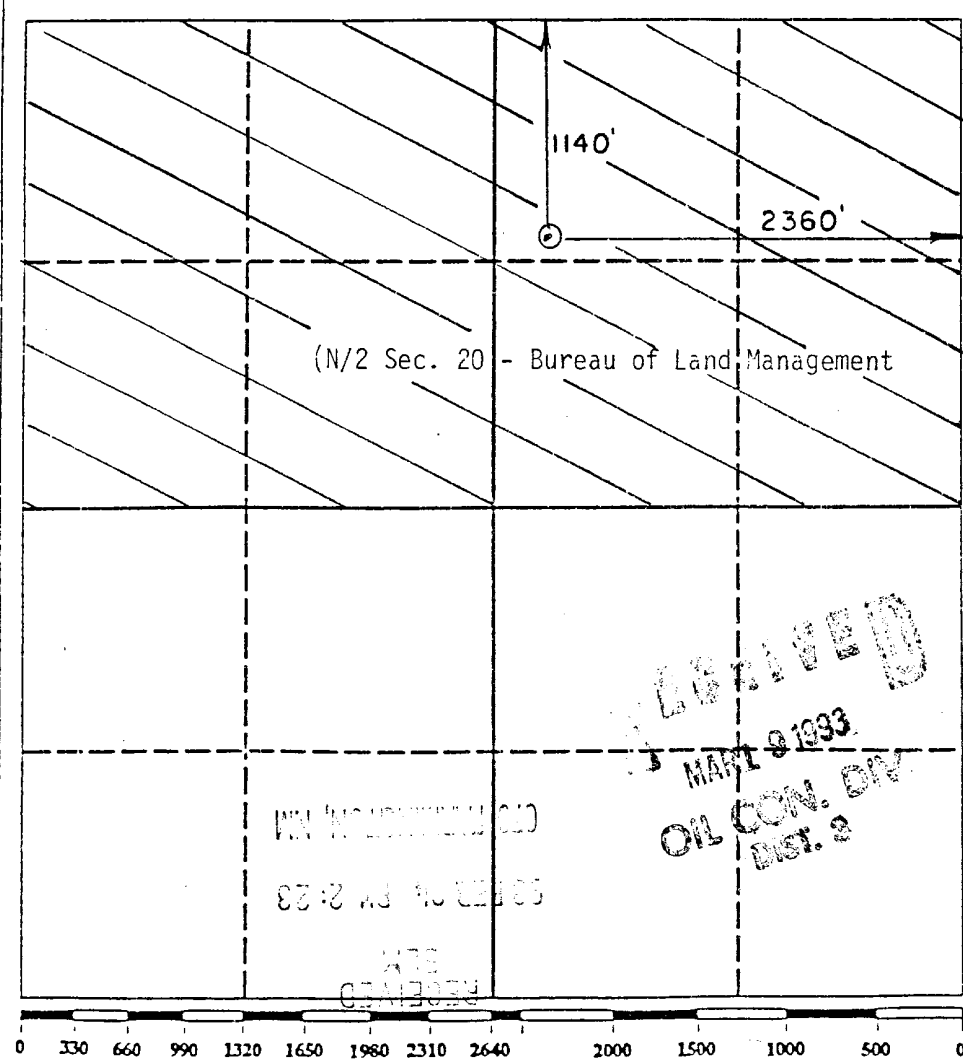
DISTRICT III
1000 Rio Brazos Rd., Aztec, NM 87410

WELL LOCATION AND ACREAGE DEDICATION PLAT

All Distances must be from the outer boundaries of the section

Operator Texakoma O & G Corporation		Lease San Juan Federal		Well No. #1
Unit Letter B	Section 20	Township 30 N.	Range 12 W.	County San Juan
Actual Footage Location of Well: 1140 feet from the North line and 2360 feet from the East line				
Ground level Elev. 5749'	Producing Formation Fruitland Coal	Pool	Dedicated Acreage: 320 Acres	

- Outline the acreage dedicated to the subject well by colored pencil or hatchure marks on the plat below.
- If more than one lease is dedicated to the well, outline each and identify the ownership thereof (both as to working interest and royalty).
- If more than one lease of different ownership is dedicated to the well, have the interest of all owners been consolidated by communitization, unitization, force-pooling, etc. **N/A**
 Yes No If answer is "yes" type of consolidation _____
 If answer is "no" list the owners and tract descriptions which have actually been consolidated. (Use reverse side of this form if necessary.)
 No allowable will be assigned to the well until all interests have been consolidated (by communitization, unitization, forced-pooling, or otherwise) or until a non-standard unit, eliminating such interest, has been approved by the Division.



OPERATOR CERTIFICATION
I hereby certify that the information contained herein is true and complete to the best of my knowledge and belief.

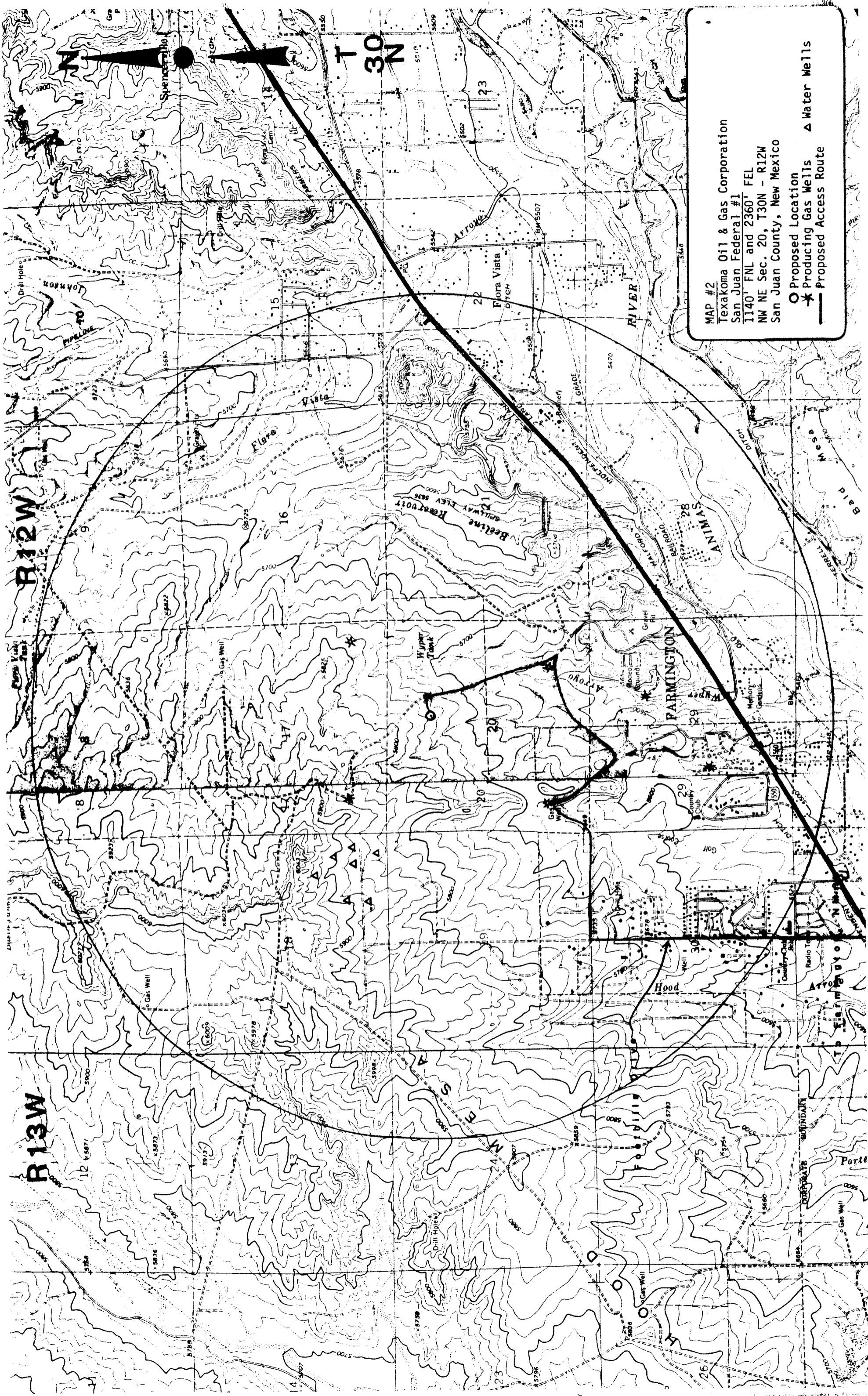
Signature: *Lisa L. Smith*
Printed Name: **Lisa L. Smith**
Authorized Agent for:
Position: **Texakoma Oil & Gas Corp.**
Company: **2/23/93**
Date:

SURVEYOR CERTIFICATION
I hereby certify that the well location shown on this plat was plotted from field notes of actual surveys made by me or under my supervision, and that the same is true and correct to the best of my knowledge and belief.

Date Surveyed: **2/23/93**
Signature & Seal: *W. G. Huddleston*
Professional Surveyor
6844
REGISTERED LAND SURVEYOR
Certificate No. **6844**

RECEIVED
MAR 9 1993
OIL CON. DIV.
DIST. 2





MAP #2
 Texakoma Oil & Gas Corporation
 San Juan Federal #1
 1140' FNL and 2360' FEL
 NW NE Sec. 20, T30N - R12W
 San Juan County, New Mexico

○ Proposed Location
 ★ Producing Gas Wells
 — Proposed Access Route

R12W

R13W

T 30 N

PARMINGTON

Hood

Porte

Johnson

Flora Vista

RIVER

ANIMAS

Bellevue
Kearfoot
SILWAY ELEV 5426

Bald

Arroyo

Corporate Boundary

Radio Tower

Country Club

Gravel Pit

Gravel

Gravel Pit

Gravel

Gravel Pit

Gravel

Gravel Pit

Gravel

Gravel Pit

Gravel

Gravel Pit

Gravel

Gravel Pit

Gravel

Gravel Pit

Gravel

Gravel Pit

Gravel

Gravel Pit

Gravel

Gravel Pit

Gravel

Gravel Pit

Gravel

Gravel Pit

Gravel

Gravel Pit

Gravel

Gravel Pit

Gravel

Gravel Pit

Gravel

Gravel Pit

Gravel

Gravel Pit

Gravel

Gravel Pit

Gravel

Gravel Pit

Gravel

Gravel Pit

Gravel

Gravel Pit

Gravel

Gravel Pit

Gravel

Gravel Pit

Gravel

Gravel Pit

Gravel

Gravel Pit

Gravel

Gravel Pit

Gravel

Gravel Pit

Gravel

Gravel Pit

Gravel

Gravel Pit

Gravel

Gravel Pit

Gravel

Gravel Pit

Gravel

Gravel Pit

Gravel

Gravel Pit

Gravel

Gravel Pit

Gravel

Gravel Pit

Gravel

Gravel Pit

Gravel

Gravel Pit

Gravel

Gravel Pit

Gravel

Gravel Pit

Gravel

Gravel Pit

Gravel

Gravel Pit

Gravel

Gravel Pit

Gravel

Gravel Pit

Gravel

Gravel Pit

Gravel

Gravel Pit

Gravel

Gravel Pit

Gravel

Gravel Pit

Gravel

Gravel Pit

Gravel

Gravel Pit

Gravel

Gravel Pit

Gravel

Gravel Pit

Gravel

Gravel Pit

Gravel

Gravel Pit

Gravel

Gravel Pit

Gravel

Gravel Pit

Gravel

Gravel Pit

Gravel

Gravel Pit

Gravel

Gravel Pit

Gravel

Gravel Pit

Gravel

Gravel Pit

Gravel

Gravel Pit

Gravel

Gravel Pit

Gravel

Gravel Pit

Gravel

Gravel Pit

