

UNITED STATES
DEPARTMENT OF THE INTERIOR
BUREAU OF LAND MANAGEMENT

CONFIDENTIAL

APPLICATION FOR PERMIT TO DRILL, DEEPEN, OR PLUG BACK

1a. TYPE OF WORK

DRILL ☒

DEEPEN ☐

PLUG BACK ☐

b. TYPE OF WELL

OIL
WELL ☐

GAS
WELL ☐

OTHER

Coalbed Methane

SINGLE
ZONE ☒

MULTIPLE
ZONE ☐

2. NAME OF OPERATOR 22521 214/701-9106 5400 LBJ Freeway, Suite 500
Texakoma Oil & Gas Corporation Dallas, TX 75240

3. ADDRESS OF OPERATOR 303/452-8888 13585 Jackson Drive
Permitco Inc. - Agent Denver, CO 80241

4. LOCATION OF WELL (Report location clearly and in accordance with any State requirements.)*
At surface 1620' FSL and 900' FWL

At proposed prod. zone

NW SW Sec. 20

14. DISTANCE IN MILES AND DIRECTION FROM NEAREST TOWN OR POST OFFICE*

3.5 miles northeast of Farmington, NM

15. DISTANCE FROM PROPOSED*

LOCATION TO NEAREST
PROPERTY OR LEASE LINE, FT.
(Also to nearest drig. unit line, if any)

900'

16. NO. OF ACRES IN LEASE

435.11

17. NO. OF ACRES ASSIGNED

TO THIS WELL

5/320

18. DISTANCE FROM PROPOSED LOCATION*
TO NEAREST WELL, DRILLING, COMPLETED,
OR APPLIED FOR, ON THIS LEASE, FT.

approx. 500'

19. PROPOSED DEPTH

2200'

20. ROTARY OR CABLE TOOLS

Rotary

21. ELEVATIONS (Show whether DF, RT, GR, etc.)

5693' GR

22. APPROX. DATE WORK WILL START*

Immediately upon approval
of this application.

23. This action is subject to technical and procedural review pursuant to 43 CFR 3160.4 and appeal pursuant to 43 CFR 3160.4

SIZE OF HOLE	SIZE OF CASING	WEIGHT PER FOOT	SETTING DEPTH	QUANTITY OF CEMENT
12-1/4"	8-5/8"	24#	300'	225 sx - Suffic to circ to surf.
7-7/8"	5-1/2"	14#	2200'	500 sx - Suffic to circ to surf.

Texakoma Oil & Gas Corporation proposes to drill a well to 2200 feet to test the Fruitland Coal formation for Coalbed Methane. If productive, casing will be run and the well completed. If dry, the well will be plugged and abandoned as per BLM and State of New Mexico requirements.

See Onshore Order No. 1 attached.

Texakoma Oil & Gas Corporaion has been designated by proper lease interest owners to conduct operations on the above mentioned lease. Bonding will be provided by Texakoma Oil & Gas Corporation.

RECEIVED
MAR 19 1993

IN ABOVE SPACE DESCRIBE PROPOSED PROGRAM: If proposal is to deepen or plug back, give data on present productive zone and proposed new productive zone. If proposal is to drill or deepen directionally, give pertinent data on subsurface locations and measured and true vertical depths. Give blowout preventer program, if any.

24. SIGNED [Signature] TITLE Consultant for Texakoma Oil & Gas Corp. DATE 2/23/93

(This space for Federal or State office use)

PERMIT NO. _____ APPROVAL DATE _____

APPROVED BY _____ TITLE _____

CONDITIONS OF APPROVAL, IF ANY:

LFE

NMOCD

APPROVED
AS AMENDED

MAR 19 1993

STEPHEN MASCO

DISTRICT MANAGER

*See Instructions On Reverse Side

11/01/75
11/01/75

11/01/75

11/01/75

Submit to Appropriate
District Office
State Lease - 4 copies
Fee Lease - 3 copies

State of New Mexico
Energy, Minerals and Natural Resources Department

Form C-102
Revised 1-1-89

OIL CONSERVATION DIVISION

P.O. Box 2088
Santa Fe, New Mexico 87504-2088

DISTRICT I
P.O. Box 1980, Hobbs, NM 88240

DISTRICT II
P.O. Drawer DD, Artesia, NM 88210

DISTRICT III
1000 Rio Brazos Rd., Aztec, NM 87410

WELL LOCATION AND ACREAGE DEDICATION PLAT

All Distances must be from the outer boundaries of the section

CONFIDENTIAL

Operator Texakoma O & G Corporation		Lease San Juan Federal		Well No. San Juan #2
Unit Letter L	Section 20	Township 30 N.	Range 12 W.	County San Juan
Actual Footage Location of Well: 1620 feet from the South line and 900 feet from the West line				
Ground Level Elev. 5693'	Producing Formation Fruitland Coal		Pool	Dedicated Acreage: 320 Acres

- Outline the acreage dedicated to the subject well by colored pencil or hatchure marks on the plat below.
- If more than one lease is dedicated to the well, outline each and identify the ownership thereof (both as to working interest and royalty). All Royalty
- If more than one lease of different ownership is dedicated to the well, have the interest of all owners been consolidated by communitization, unitization, force-pooling, etc.?
☐ Yes ☐ No If answer is "yes" type of consolidation Communitization Pending
If answer is "no" list the owners and tract descriptions which have actually been consolidated. (Use reverse side of this form if necessary).
No allowable will be assigned to the well until all interests have been consolidated (by communitization, unitization, forced-pooling, or otherwise) or until a non-standard unit, eliminating such interest, has been approved by the Division.

OPERATOR CERTIFICATION

I hereby certify that the information contained herein is true and complete to the best of my knowledge and belief.

Signature

Lisa L. Smith

Printed Name

Authorized Agent For:

Position

Texakoma Oil & Gas Corp.

Company

February 23, 1993

Date

SURVEYOR CERTIFICATION

I hereby certify that the well location shown on this plat was plotted from field notes of actual surveys made by me or under my supervision, and that the same is true and correct to the best of my knowledge and belief.

Date Surveyed

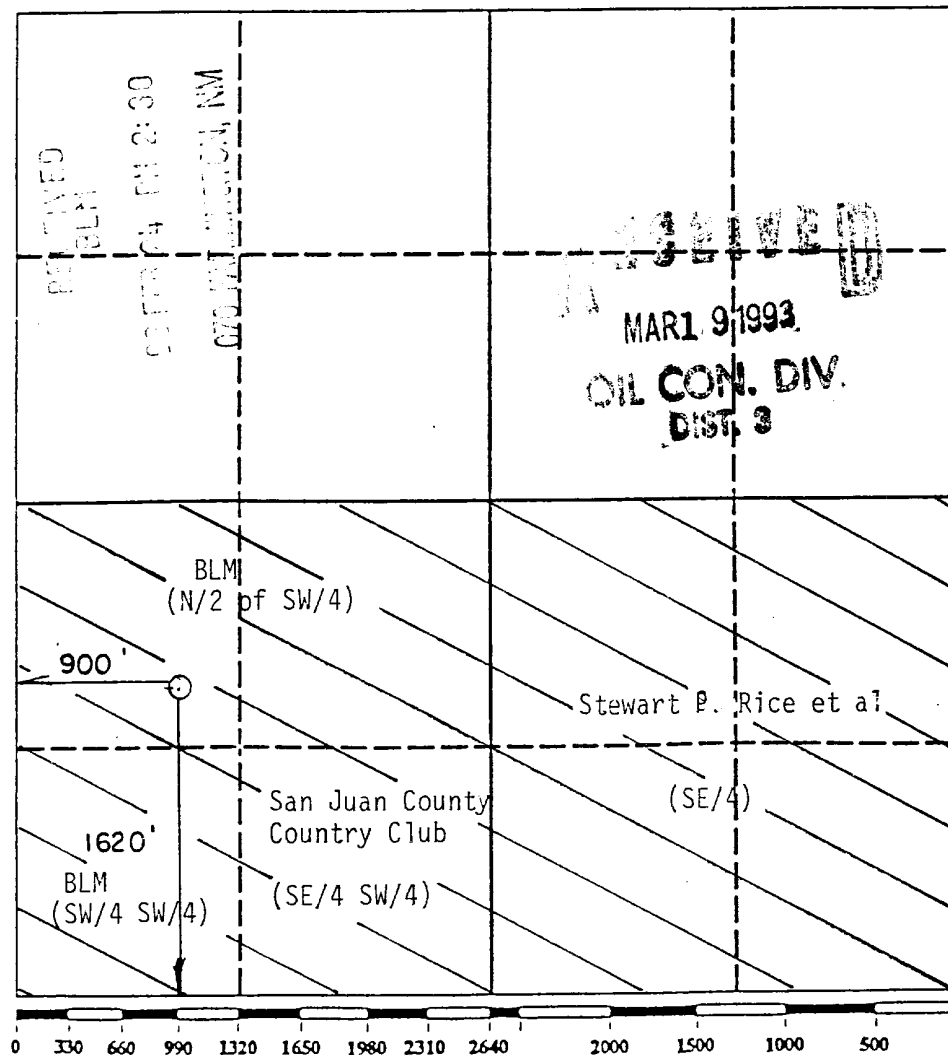
5 FEB 23 1993

Signature & Seal of Professional Surveyor

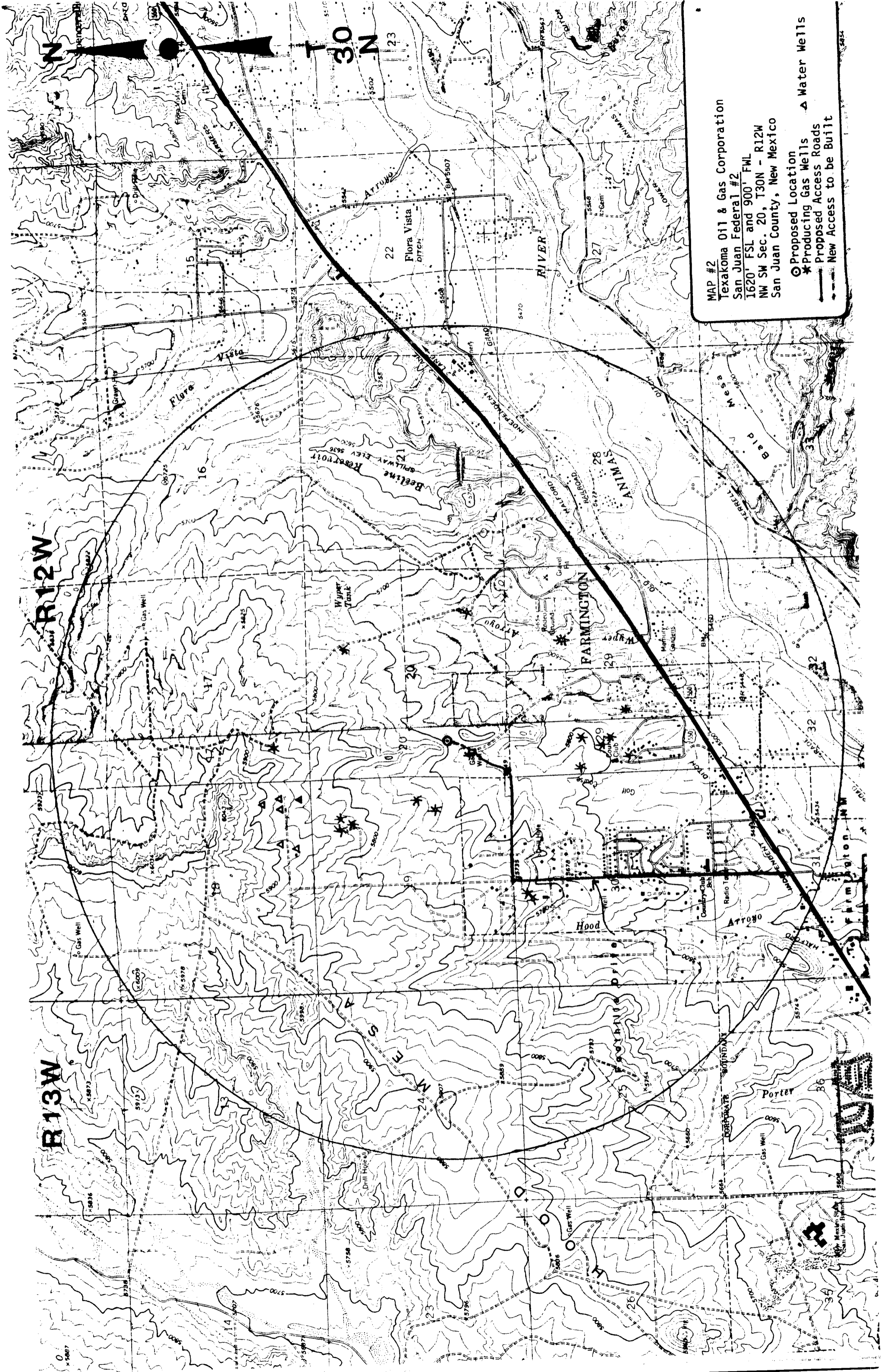
James H. Hudob
6844
REGISTERED LAND SURVEYOR

Certificate No.

6844







MAP #2
Texakoma Oil & Gas Corporation
San Juan Federal #2
1620' FSL and 900' FWL
NW SW Sec. 20, T30N - R12W
San Juan County, New Mexico

○ Proposed Location
★ Producing Gas Wells
— Proposed Access Roads
— New Access to be Built

▲ Water Wells

