

Submit to Appropriate
District Office
State Lease - 6 copies
Fee Lease - 5 copies

State of New Mexico
Energy, Minerals and Natural Resources Department

Form C-101
Revised 1-1-89

OIL CONSERVATION DIVISION

DISTRICT I
P.O. Box 1980, Hobbs, NM 88240

P.O. Box 2088

Santa Fe, New Mexico 87504-2088

DISTRICT II
P.O. Drawer DD, Artesia, NM 88210

DISTRICT III
1000 Rio Brazos Rd., Aztec, NM 87410

API NO. (assigned by OCD on New Wells)

30-045-28979 ✓

5. Indicate Type of Lease

STATE ☐

FEE ☒

6. State Oil & Gas Lease No.

APPLICATION FOR PERMIT TO DRILL, DEEPEN, OR PLUG BACK

1a. Type of Work:

DRILL ☒

RE-ENTER ☐

DEEPEN ☐

PLUG BACK ☐

b. Type of Well:

OIL
WELL ☐

GAS
WELL ☒

OTHER

SINGLE
ZONE ☐

MULTIPLE
ZONE ☒

7. Lease Name or Unit Agreement Name

Lorraine Gas Com ✓

13200

2. Name of Operator

Amoco Production Company

Attention:

Julie Acevedo

8. Well No.

1-Y (160/4/320)

3. Address of Operator

P.O. Box 800

Denver

Colorado

80201

9. Pool name or Wildcat

72359 Blanco PC Ext./Basin Dakota 71599

4. Well Location

Unit Letter D

: 1170'

Feet From The

North

Line and

1090'

Feet From The

West

Line

Section

26

Township

30N

Range

8W

NMPM

San Juan

County

10. Proposed Depth

7362'

11. Formation

Blanco PC Ext./Basin Dakota

12. Rotary or C.T.

Rotary

13. Elevations (Show whether DF, RT, GR, etc.)

5887' GL

14. Kind & Status Plug. Bond

15. Drilling Contractor

aztec

16. Approx. Date Work will start

07-30-93

17.

PROPOSED CASING AND CEMENT PROGRAM

SIZE OF HOLE	SIZE OF CASING	WEIGHT PER FOOT	SETTING DEPTH	SACKS OF CEMENT	EST. TOP
17 1/2"	13 3/8" J-55	68#	400'	625cf CI B W/2%	Cement to Surface
12 1/4"	9 5/8" J-55	36#	3045'	1969cf CI B (Cement)	Cement to Surface
8 3/4"	7" J-55	23#	6991'	1020cf CI B	

See Attached Drilling program summary 7 1/4" N. 80 11-6# 6891' 7362' Liner 93 cf CB

This Approval
Expires 7-22-94
And Will Not Be
Extended

CONFIDENTIAL

RECEIVED
JUL 21 1993
OIL CON. DIV
DIST. 3

IN ABOVE SPACE DESCRIBE PROPOSED PROGRAM: IF PROPOSAL IS TO DEEPEN OR PLUG BACK, GIVE DATA ON PRESENT PRODUCTIVE ZONE AND PROPOSED NEW PRODUCTIVE ZONE. GIVE BLOWOUT PREVENTER PROGRAM, IF ANY.

I hereby certify that the information above is true and complete to the best of my knowledge and belief.

SIGNATURE Julie Acevedo TITLE Sr. Staff Assistant DATE 07-16-1993

TYPE OR PRINT NAME Julie Acevedo TELEPHONE NO. (303) 830-6003

(This space for State Use)

APPROVED BY Ernie T. Busch DEPUTY OIL & GAS INSPECTOR, DIST. 3 DATE 7-22-93 JUL 22 1993

CONDITIONS OF APPROVAL, IF ANY:

11/22/2007

034135300

NO 750 MC
E 170

Submit to Appropriate
District Office
State Lease - 4 copies
Fee Lease - 3 copies

State of New Mexico
Energy, Minerals and Natural Resources Department

Form C-102
Revised 1-1-89

OIL CONSERVATION DIVISION

P.O. Box 2088
Santa Fe, New Mexico 87504-2088

DISTRICT I
P.O. Box 1980, Hobbs, NM 88240

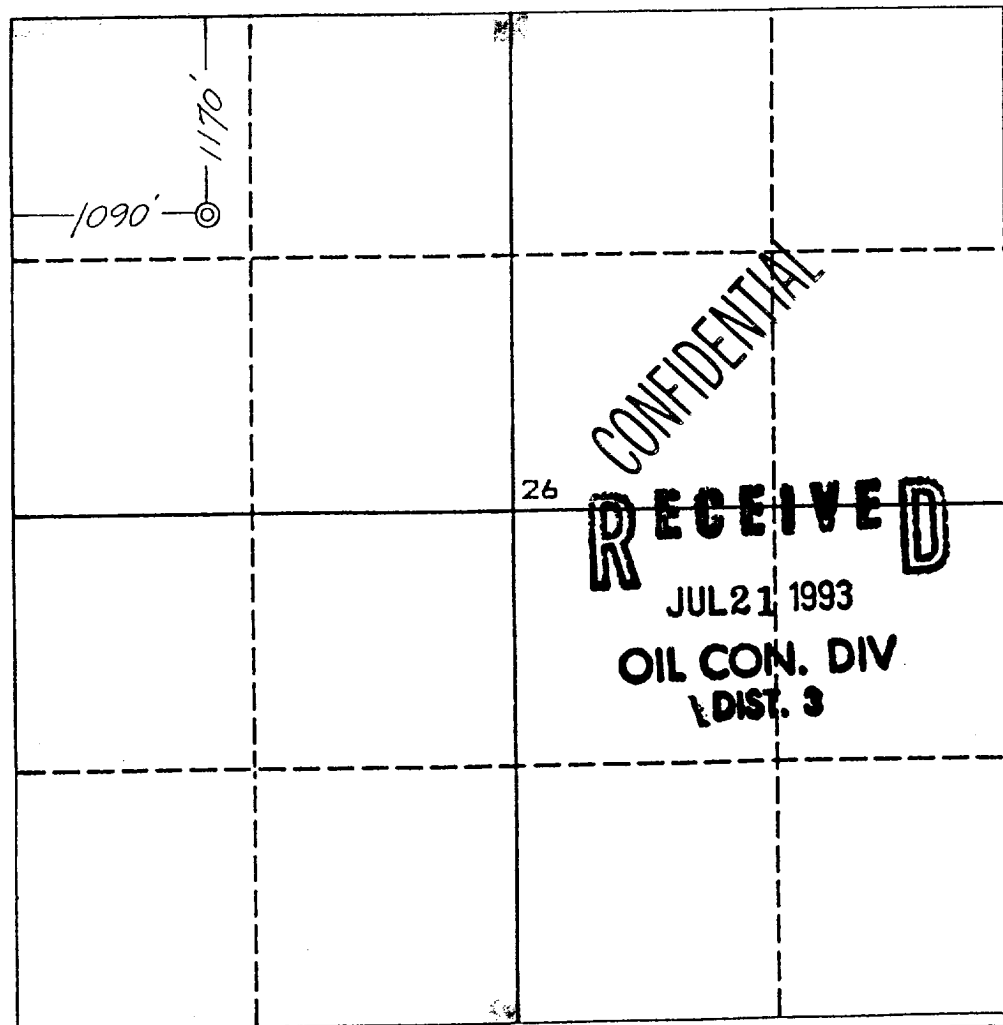
DISTRICT II
P.O. Drawer DD, Artesia, NM 88210

DISTRICT III
1000 Rio Brazos Rd., Aztec, NM 87410

WELL LOCATION AND ACREAGE DEDICATION PLAT
All Distances must be from the outer boundaries of the section

Operator AMOCO PRODUCTION COMPANY			Lease LORRAINE GAS COM		Well No. 1-Y
Unit Letter D	Section 26	Township 30 NORTH	Range 8 WEST	County SAN JUAN	
Actual Footage Location of Well: 1170 feet from the NORTH line and 1090 feet from the WEST line					
Ground level Elev. 5887	Producing Formation <i>Basin Dakota</i>		Pool <i>Basin Dakota</i>	Dedicated Acreage: 330 4/2 Acres	

- Outline the acreage dedicated to the subject well by colored pencil or hatchure marks on the plat below.
- If more than one lease is dedicated to the well, outline each and identify the ownership thereof (both as to working interest and royalty).
- If more than one lease of different ownership is dedicated to the well, have the interest of all owners been consolidated by communitization, unitization, force-pooling, etc?
☐ Yes ☐ No If answer is "yes" type of consolidation _____
If answer is "no" list the owners and tract descriptions which have actually been consolidated. (Use reverse side of this form if necessary). _____
No allowable will be assigned to the well until all interests have been consolidated (by communitization, unitization, forced-pooling, or otherwise) or until a non-standard unit, eliminating such interest, has been approved by the Division.



OPERATOR CERTIFICATION

I hereby certify that the information contained herein is true and complete to the best of my knowledge and belief.

Signature *Julie L. Accuerdo*
Printed Name **Julie L. Accuerdo**
Position *Sr. Staff Assistant*
Company *Amoco Production Co.*
Date **7-14-93**

SURVEYOR CERTIFICATION

I hereby certify that the well location shown on this plat was plotted from field notes of actual surveys made by me or under my supervision, and that the same is true and correct to the best of my knowledge and belief.

Date Surveyed **July 6, 1993**

Signature & Seal of Professional Surveyor
Gary D. Vann
GARY D. VANN
7016
Certification
7016
REGISTERED PROFESSIONAL LAND SURVEYOR

Submit to Appropriate
District Office
State Lease - 4 copies
Fee Lease - 3 copies

State of New Mexico
Energy, Minerals and Natural Resources Department

Form C-102
Revised 1-1-89

OIL CONSERVATION DIVISION

DISTRICT I
P.O. Box 1980, Hobbs, NM 88240

P.O. Box 2088
Santa Fe, New Mexico 87504-2088

DISTRICT II
P.O. Drawer DD, Artesia, NM 88210

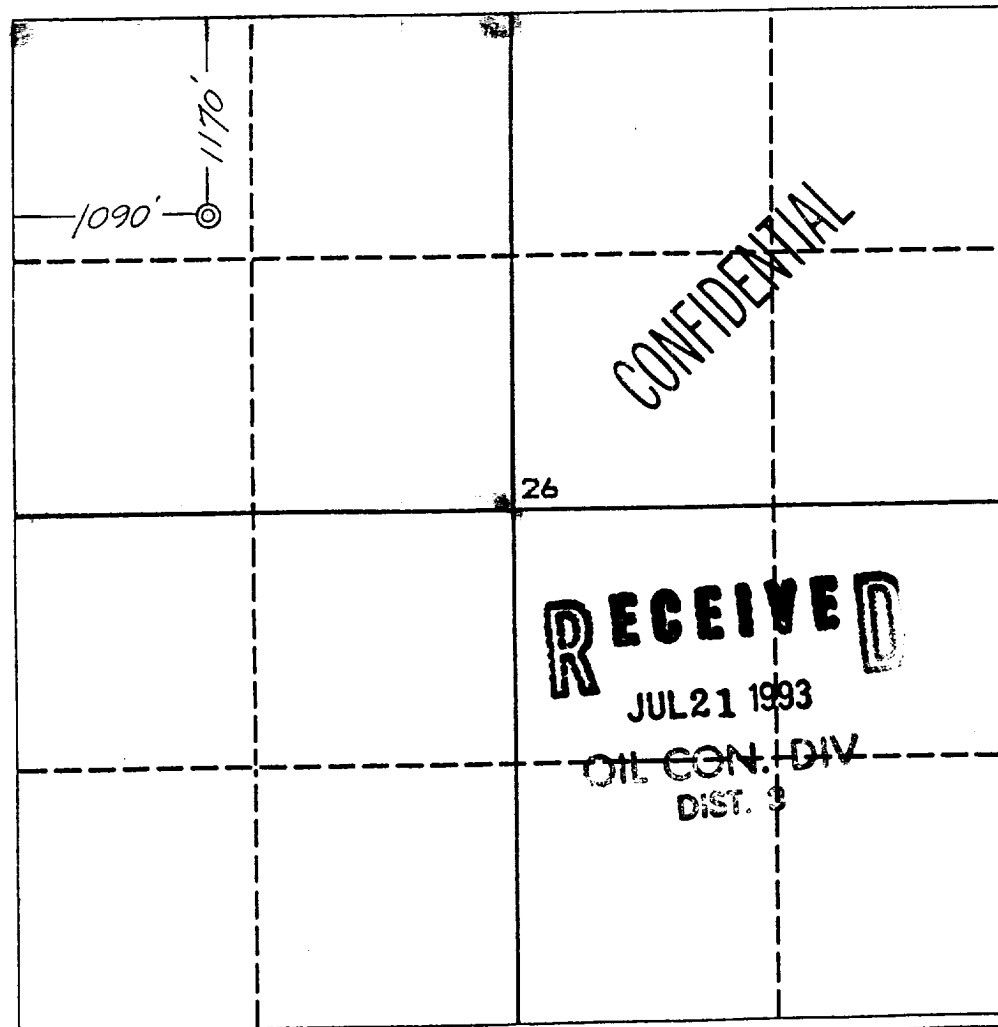
DISTRICT III
1000 Rio Brazos Rd., Aztec, NM 87410

WELL LOCATION AND ACREAGE DEDICATION PLAT

All Distances must be from the outer boundaries of the section

Operator AMOCO PRODUCTION COMPANY			Lease LORRAINE GAS COM		Well No. 1-Y
Unit Letter D	Section 26	Township 30 NORTH	Range 8 WEST	County SAN JUAN	
Actual Footage Location of Well: 1170 feet from the NORTH line and 1090 feet from the WEST line					
Ground level Elev. 5887	Producing Formation Blanco PC ext.		Pool Blanco PC ext.	Dedicated Acreage: 160 00/4 Acres	

1. Outline the acreage dedicated to the subject well by colored pencil or hachure marks on the plat below.
2. If more than one lease is dedicated to the well, outline each and identify the ownership thereof (both as to working interest and royalty).
3. If more than one lease of different ownership is dedicated to the well, have the interest of all owners been consolidated by communitization, unitization, force-pooling, etc.?
☐ Yes ☐ No If answer is "yes" type of consolidation _____
If answer is "no" list the owners and tract descriptions which have actually been consolidated. (Use reverse side of this form if necessary.) _____
No allowable will be assigned to the well until all interests have been consolidated (by communitization, unitization, forced-pooling, or otherwise) or until a non-standard unit, eliminating such interest, has been approved by the Division.



OPERATOR CERTIFICATION

I hereby certify that the information contained herein is true and complete to the best of my knowledge and belief.

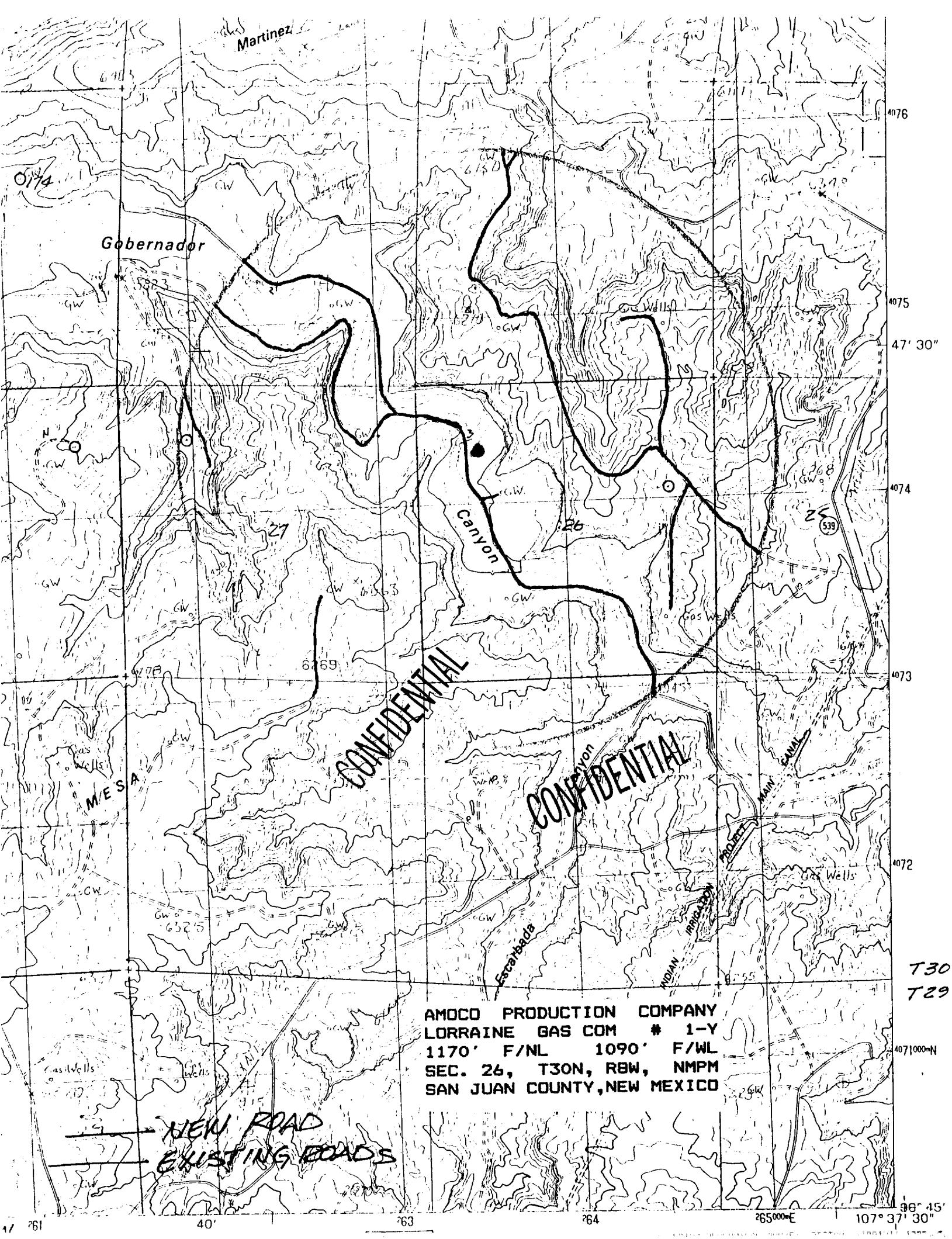
Signature *Julie Acevedo*
Printed Name **Julie Acevedo**
Position **Staff Assistant**
Company **Amoco Production Co.**
Date **7-14-93**

SURVEYOR CERTIFICATION

I hereby certify that the well location shown on this plat was plotted from field notes of actual surveys made by me or under my supervision, and that the same is true and correct to the best of my knowledge and belief.

Date Surveyed **July 6, 1993**

Signature & Seal of Professional Surveyor
GARY D. VANN
7016
7016
REGISTERED PROFESSIONAL LAND SURVEYOR



0174

Gobernador

Martinez

Canyon

MESA

CONFIDENTIAL

Escabada

INDIAN

CANAL

PROPERTY

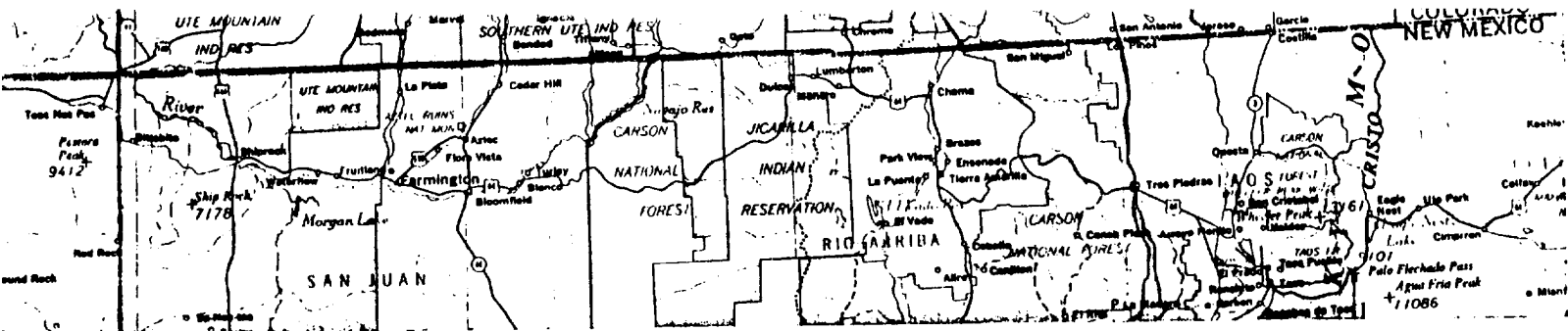
AMOCO PRODUCTION COMPANY
LORRAINE GAS COM # 1-Y
1170' F/NL 1090' F/WL
SEC. 26, T30N, R8W, NMPM
SAN JUAN COUNTY, NEW MEXICO

NEW ROAD
EXISTING ROADS

T30
T29

4071000N

107° 37' 30"



LORRAINE GAS COM # 1-Y
 1170' F/NL 1090' F/WL
 SEC. 26, T30N, RBW, NMPM
 RAIL POINT: 161 miles from Montrose
 MUD POINT: 25 miles from Aztec
 CEMENT POINT: 39 miles from Farmington

CONFIDENTIAL

