

Submit 3 Copies
to Appropriate
District Office

DISTRICT I
P.O. Box 1980, Hobbs, NM 88240

DISTRICT II
P.O. Drawer DD, Artesia, NM 88210

DISTRICT III
1000 Rio Brazos Rd., Aztec, NM 87410

Energy, Minerals and Natural Resources Department

OIL CONSERVATION DIVISION

P.O. Box 2088
Santa Fe, New Mexico 87504-2088

Revised 1-1-89

WELL API NO.

30-045-28993

5. Indicate Type of Lease

STATE ☐

FEE ☒

6. State Oil & Gas Lease No.

SUNDRY NOTICES AND REPORTS ON WELLS
(DO NOT USE THIS FORM FOR PROPOSALS TO DRILL OR TO DEEPEN OR PLUG BACK TO A
DIFFERENT RESERVOIR. USE "APPLICATION FOR PERMIT"
(FORM C-101) FOR SUCH PROPOSALS.)

1. Type of Well:

OIL
WELL ☐

GAS
WELL ☒

OTHER

2. Name of Operator

Robert L. Bayless

3. Address of Operator

P.O. Box 168

Farmington, NM 87499

4. Well Location

Unit Letter K : 1470 Feet From The South Line and 1645 Feet From The West Li

Section 2

Township 30N

Range 12W

NMMPM

San Juan

County

10. Elevation (Show whether DF, RKB, RT, GR, etc.)

5788 GR

11.

Check Appropriate Box to Indicate Nature of Notice, Report, or Other Data

NOTICE OF INTENTION TO:

PERFORM REMEDIAL WORK ☐

PLUG AND ABANDON ☐

TEMPORARILY ABANDON ☐

CHANGE PLANS ☒

PULL OR ALTER CASING ☐

OTHER: ☐

SUBSEQUENT REPORT OF:

REMEDIAL WORK ☐

ALTERING CASING ☐

COMMENCE DRILLING OPNS. ☐

PLUG AND ABANDONMENT ☐

CASING TEST AND CEMENT JOB ☐

OTHER: ☐

12. Describe Proposed or Completed Operations (Clearly state all pertinent details, and give pertinent dates, including estimated date of starting any proposed work) SEE RULE 1103.

This well was originally permitted as a Pictured Cliffs well. Log evaluation indicates a more prospective completion to be the Fruitland Coal. Attached are a new Acreage Dedication Plat and completion procedure.

RECEIVED
MAR 1 01994
OIL CON. DIV.
DIST. 3

I hereby certify that the information above is true and complete to the best of my knowledge and belief.

SIGNATURE

P. M. Bayless

TITLE Engineer

DATE 3/9/94

TYPE OR PRINT NAME

Price M. Bayless

TELEPHONE NO. 326-2659

(This space for State Use)

APPROVED BY

Eric R. Burch

TITLE

Deputy Oil & Gas Inspector

DATE

3-14-94

CONDITIONS OF APPROVAL, IF ANY:

OK

Submit to Appropriate
District Office
State Lease - 4 copies
Fee Lease - 3 copies

State of New Mexico
Energy, Minerals and Natural Resources Department

Form C-102
Revised 1-1-89

OIL CONSERVATION DIVISION

P.O. Box 2088
Santa Fe, New Mexico 87504-2088

DISTRICT I
P.O. Box 1980, Hobbs, NM 88240

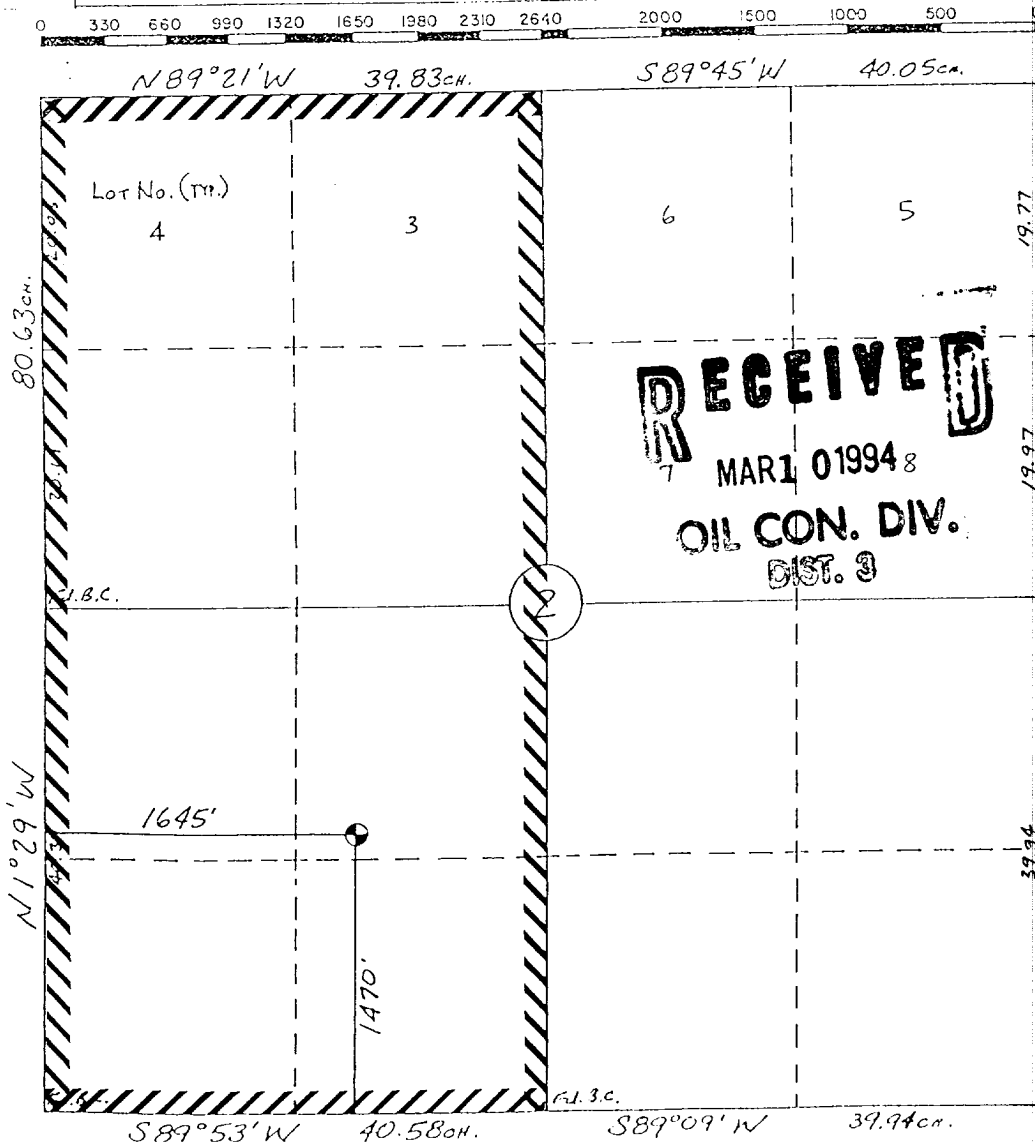
DISTRICT II
P.O. Drawer DD, Artesia, NM 88210

DISTRICT III
1000 Rio Brazos Rd., Aztec, NM 87410

WELL LOCATION AND ACREAGE DEDICATION PLAT

All Distances must be from the outer boundaries of the section

Operator ROBERT L. BAYLESS		Lease MOSELEY		Well No. 1
Unit Letter K	Section 2	Township 30 N	Range 12 W	County San Juan
Actual Footage Location of Well: 1470 feet from the South line and 1645 feet from the West line				
Ground level Elev. 5788	Producing Formation Fruitland Coal	Pool Basin	Dedicated Acreage: 320 3/4 .25 Acres	
<p>1. Outline the acreage dedicated to the subject well by colored pencil or hatchure marks on the plat below.</p> <p>2. If more than one lease is dedicated to the well, outline each and identify the ownership thereof (both as to working interest and royalty).</p> <p>3. If more than one lease of different ownership is dedicated to the well, have the interest of all owners been consolidated by communitization, unitization, force-pooling, etc.? <input type="checkbox"/> Yes <input type="checkbox"/> No If answer is "yes" type of consolidation _____</p> <p>If answer is "no" list the owners and tract descriptions which have actually been consolidated. (Use reverse side of this form if necessary.) _____</p> <p>No allowable will be assigned to the well until all interests have been consolidated (by communitization, unitization, forced-pooling, or otherwise) or until a non-standard unit, eliminating such interest, has been approved by the Division.</p>				



OPERATOR CERTIFICATION

I hereby certify that the information contained herein is true and complete to the best of my knowledge and belief.

Signature

Printed Name

Price M. Bayless

Position

Engineer

Company

Robert L. Bayless

Date

3/9/94

SURVEYOR CERTIFICATION

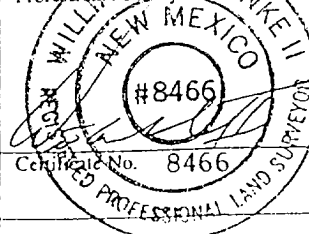
I hereby certify that the well location shown on this plat was plotted from field notes or actual surveys made by me or under my supervision, and that the same is true and correct to the best of my knowledge and belief.

19 Aug., 1993

Date Surveyed

William E. Mahnke II

Signature & Seal of Professional Surveyor



Robert L. Bayless
Moseley #1
1470' FSL & 1645' FWL
Section 2-T30N-R12W
San Juan County, New Mexico

COMPLETION PROCEDURE

STATUS

5 1/2" 14# M50 NEW MAVERICK CASING LANDED AT 2244 FT, PBTD AT 2205

FORMATION TOPS

Ojo Alamo	402 ft
Kirtland	484 ft
Fruitland	1796 ft
Pictured Cliffs	2128 ft

PROCEDURE

1. Install Western frac valve on casing and pressure test casing to 2800 PSI.
2. Rig up Blue Jet with mast truck and run GR/CLL from PBTD to 1500 ft.
3. Perforate the Fruitland Coal with 4" casing gun using 4 JSPF .50" shots as follows:

2088 to 2114 ft 26 ft 105 holes

4. Rig up Western Company to acidize perfs with 500 gal of 7.5% HCL acid. Drop 160 balls to attempt ball off.
5. Run wireline junk basket to retrieve balls.
6. Rig up Western to fracture stimulate the Fruitland with 66600 gallons of 70 quality foam and 119000 lbs of sand, at a rate of 30 BPM as follows:

Pad	24600 gal		
1st stage	10000 gal	1 lb/gal	10000 lbs
2nd stage	8000 gal	2 lb/gal	16000 lbs
3rd stage	6000 gal	3 lb/gal	18000 lbs
4th stage	5000 gal	4 lb/gal	20000 lbs
5th stage	5000 gal	5 lb/gal	25000 lbs
6th stage	3000 gal	6 lb/gal	18000 lbs
Flush	2000 gal		
	66600 gal		119000 lbs

7. Shut down and obtain ISIP through 30 minute shutin pressures. Leave well shut in for 4 hours.
8. Open well to pit through 1/8" choke. Flow well to clean up frac fluid. Leave well flowing for 3 days unless well dies.
9. Set anchors with Mote.

10. Move in pulling unit and make up wellhead and BOP. Unload and tally tubing.
11. Trip in hole with sand bailer and clean out to PBTD. Trip out of hole and clean out tubing.
12. Trip in hole with seating nipple 1 joint off bottom and land tubing in middle of perfs.
13. Rig up and swab to get well to flow. If well flows, leave well open to pit and rig down rig. Swab for maximum of 2 days.