

UNITED STATES
DEPARTMENT OF THE INTERIOR
BUREAU OF LAND MANAGEMENT

Form approved.
Budget Bureau No. 1004-0136
Expires: December 31, 1991

APPLICATION FOR PERMIT TO DRILL OR DEEPEN

1a. TYPE OF WORK

DRILL ☒

DEEPEN ☐

b. TYPE OF WELL

OIL WELL ☐

GAS WELL ☒

OTHER

SINGLE ZONE ☐

MULTIPLE ZONE ☒

2. NAME OF OPERATOR

Attention:

Amoco Production Company

D. Tallant

3. ADDRESS AND TELEPHONE NO.

P.O. Box 800, Denver, Colorado 80201

(303) 830-4040

4. LOCATION OF WELL (Report location clearly and in accordance with any State requirements.)*

At surface

1510' FSL

1460' FEL

At proposed prod. zone

14. DISTANCE IN MILES AND DIRECTION FROM NEAREST TOWN OR POST OFFICE*

22 Miles from Aztec, NM.

15. DISTANCE FROM PROPOSED* LOCATION TO NEAREST PROPERTY OR LEASE LINE, FT. (Also to nearest drlg. unit line, if any)

16. NO. OF ACRES IN LEASE

2549.29

17. NO. OF ACRES ASSIGNED TO THIS WELL

100/320

18. DISTANCE FROM PROPOSED LOCATION* TO NEAREST WELL, DRILLING, COMPLETED, OR APPLIED FOR, ON THIS LEASE, FT.

19. PROPOSED DEPTH

7469'

20. ROTARY OR CABLE TOOLS

Rotary

21. ELEVATIONS (Show whether DF, RT, GR., etc.)

5938 GL

22. APPROX. DATE WORK WILL START*

01-10-93

23.

PROPOSED CASING AND CEMENTING PROGRAM SUBJECT TO CONFORMANCE WITH ATTACHED

SIZE OF HOLE	GRADE, SIZE OF CASING	WEIGHT PER FOOT	SETTING DEPTH	QUANTITY OF CEMENT
17-1/2"	13-3/8"	61#	400'	625 cf CI B W/2% CaCl2 (Cement to surface)
12-1/4"	9-5/8"	36#	3038"	2086 cf CI B (Cement to surface)
8-3/4"	7"	23#	6958'	1001 cf CL B (Cmt to surface)
6-1/4"	4-1/2"	11.6#	7469' Liner	124 cf CL G

Notice of Staking submitted: 12/9/93 as the Tallant #1E

Lease Description:

T30N, R8W

Sec. 26: E/2, SW/4, E/2 NW/4, SW/4 NW/4

RECEIVED
JAN 9 1994
OIL CON. DIV
DIST. 3

CONFIDENTIAL

IN ABOVE SPACE DESCRIBE PROPOSED PROGRAM: If proposal is to deepen, give data on present productive zone and proposed new productive zone. If proposal is to drill or deepen directionally, give pertinent data on subsurface locations and measured and true vertical depths. Give blowout preventer program, if any.

24.

SIGNED

DeAnne Tallant

TITLE Staff Assistant

DATE

12-09-1993

(This space for Federal or State office use)

PERMIT NO.

APPROVAL DATE

APPROVED
AS AMENDED

Application approval does not warrant or certify that the applicant holds legal or equitable title to those rights in the subject lease which would entitle the applicant to a lease.

CONDITIONS OF APPROVAL, IF ANY:

APPROVED BY

OK

TITLE

NMOCD

JAN 14 1994

DISTRICT MANAGER

*See Instructions On Reverse Side

Title 18 U.S.C. Section 1001, makes it a crime for any person knowingly and willfully to make to any department or agency of the United States any false, fictitious or fraudulent statements or representations as to any matter within its jurisdiction.

Submit to Appropriate
District Office
State Lease - 4 copies
Fee Lease - 3 copies

Energy, Minerals and Natural Resources Department

Revised 1-1-89

OIL CONSERVATION DIVISION

P.O. Box 2088
Santa Fe, New Mexico 87504-2088

DISTRICT I
P.O. Box 1980, Hobbs, NM 88240

DISTRICT II
P.O. Drawer DD, Artesia, NM 88210

DISTRICT III
1000 Rio Brazos Rd., Aztec, NM 87410

WELL LOCATION AND ACREAGE DEDICATION PLAT

All Distances must be from the outer boundaries of the section

Operator AMOCO PRODUCTION COMPANY			Lease Tallant		Well No. # 1E
Unit Letter J	Section 26	Township 30 NORTH	Range 8 WEST	County NMPM	SAN JUAN
Actual Footage Location of Well: 1510 feet from the SOUTH line and 1460 feet from the EAST line					
Ground level Elev. 5938	Producing Formation Pictured Cliffs		Pool Pictured Cliffs	Dedicated Acreage: SE/4 160 Acres	

1. Outline the acreage dedicated to the subject well by colored pencil or hatchure marks on the plat below.
2. If more than one lease is dedicated to the well, outline each and identify the ownership thereof (both as to working interest and royalty).
3. If more than one lease of different ownership is dedicated to the well, have the interest of all owners been consolidated by communitization, unitization, force-pooling, etc.?
☐ Yes ☐ No If answer is "yes" type of consolidation _____
If answer is "no" list the owners and tract descriptions which have actually been consolidated. (Use reverse side of this form if necessary.)
No allowable will be assigned to the well until all interests have been consolidated (by communitization, unitization, forced-pooling, or otherwise) or until a non-standard unit, eliminating such interest, has been approved by the Division.

CONFIDENTIAL

OPERATOR CERTIFICATION

I hereby certify that the information contained herein is true and complete to the best of my knowledge and belief.

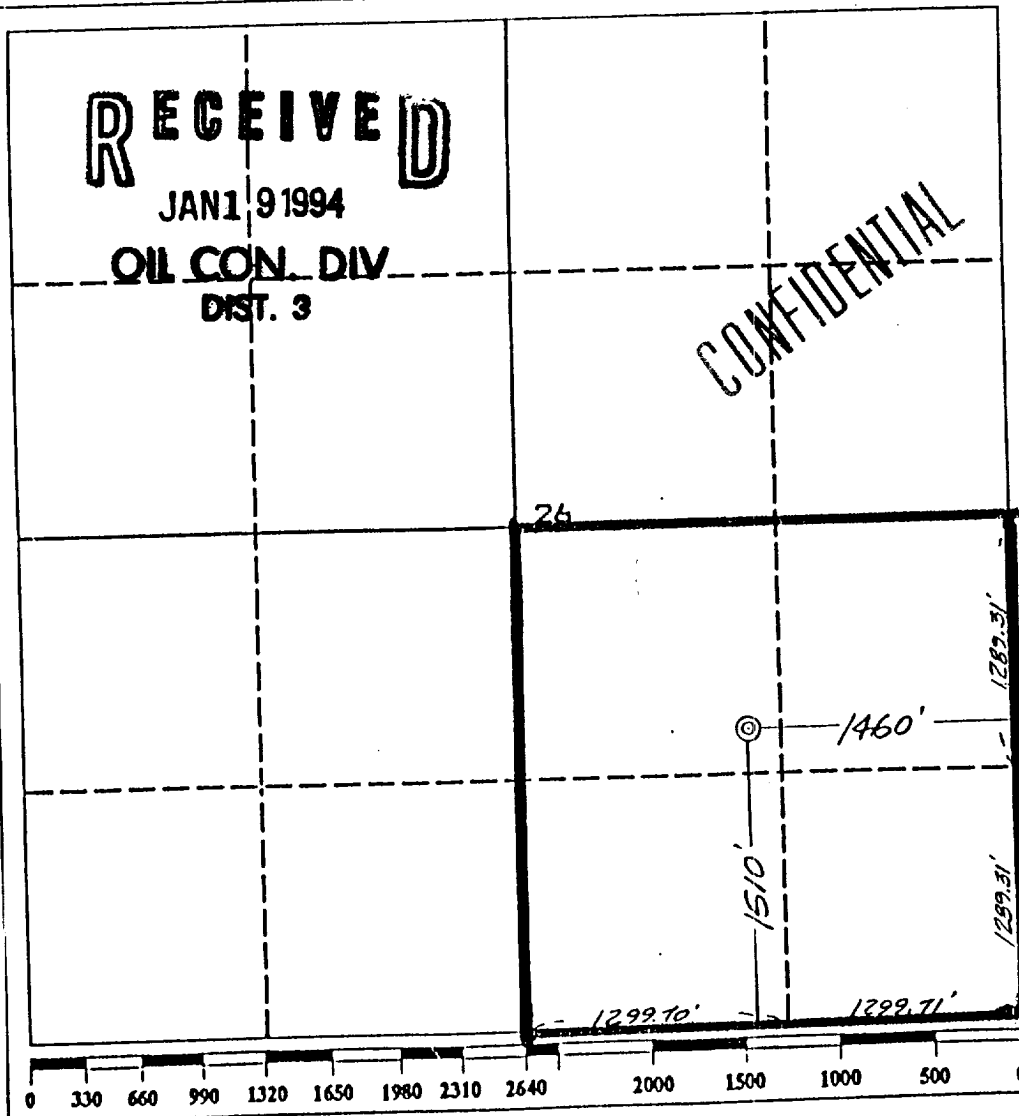
Signature DeAnne Tallant
Printed Name
DeAnne Tallant
Position
Staff Assistant
Company
Amoco Production Company
Date
12/8/93

SURVEYOR CERTIFICATION

I hereby certify that the well location shown on this plat was plotted from field notes of actual surveys made by me or under my supervision, and that the same is true and correct to the best of my knowledge and belief.

Date Surveyed
November 22, 1993

Signature & Seal of
Professional Surveyor
GARY D. VANN
7016
7016



Submit to Appropriate
District Office
State Lease - 4 copies
Fee Lease - 3 copies

State of New Mexico
Energy, Minerals and Natural Resources Department

Form C-102
Revised 1-1-89

OIL CONSERVATION DIVISION

P.O. Box 2088
Santa Fe, New Mexico 87504-2088

DISTRICT I
P.O. Box 1980, Hobbs, NM 88240

DISTRICT II
P.O. Drawer DD, Artesia, NM 88210

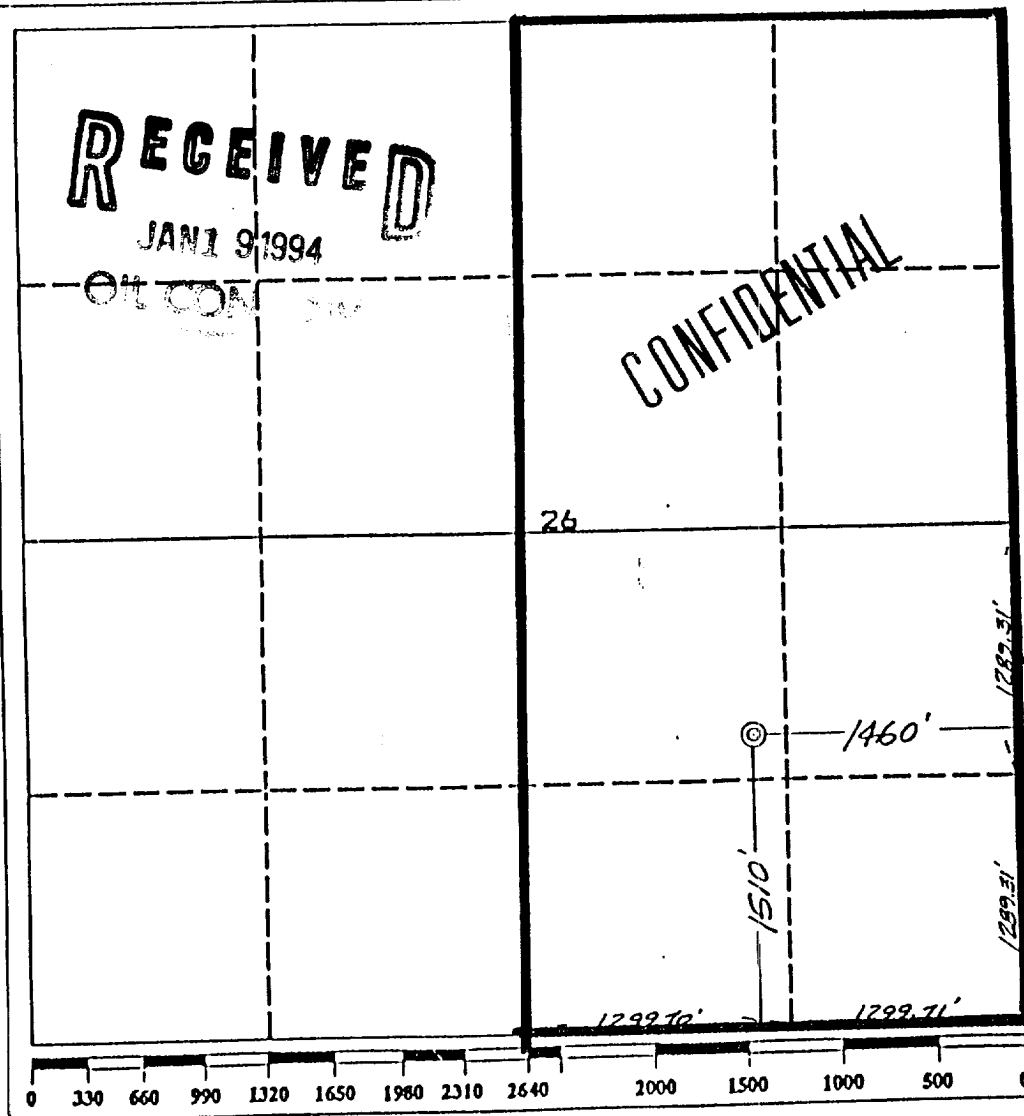
DISTRICT III
1000 Rio Brazos Rd., Aztec, NM 87410

WELL LOCATION AND ACREAGE DEDICATION PLAT

All Distances must be from the outer boundaries of the section

Operator AMOCO PRODUCTION COMPANY			Lease Tallant		Well No. #1E
Unit Letter J	Section 26	Township 30 NORTH	Range 8 WEST	County NMPM	SAN JUAN
Actual Footage Location of Well: 1510 feet from the SOUTH line and 1460 feet from the EAST line					
Ground level Elev. 5938	Producing Formation Dakota		Pool Basin Dakota		Dedicated Acreage: E/2 320 Acres

- Outline the acreage dedicated to the subject well by colored pencil or hatchure marks on the plat below.
- If more than one lease is dedicated to the well, outline each and identify the ownership thereof (both as to working interest and royalty).
- If more than one lease of different ownership is dedicated to the well, have the interest of all owners been consolidated by communization, unitization, force-pooling, etc.?
☐ Yes ☐ No If answer is "yes" type of consolidation _____
If answer is "no" list the owners and tract descriptions which have actually been consolidated. (Use reverse side of this form if necessary).
No allowable will be assigned to the well until all interests have been consolidated (by communization, unitization, force-pooling, or otherwise) or until a non-standard unit, eliminating such interest, has been approved by the Division.



OPERATOR CERTIFICATION

I hereby certify that the information contained herein is true and complete to the best of my knowledge and belief.

Signature

DeAnne Tallant

Printed Name

DeAnne Tallant

Position

Staff Assistant

Company

Amoco Production Company

Date

12/8/93

SURVEYOR CERTIFICATION

I hereby certify that the well location shown on this plat was plotted from field notes of actual surveys made by me or under my supervision, and that the same is true and correct to the best of my knowledge and belief.

Date Surveyed

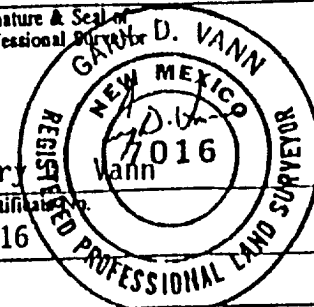
November 22, 1993

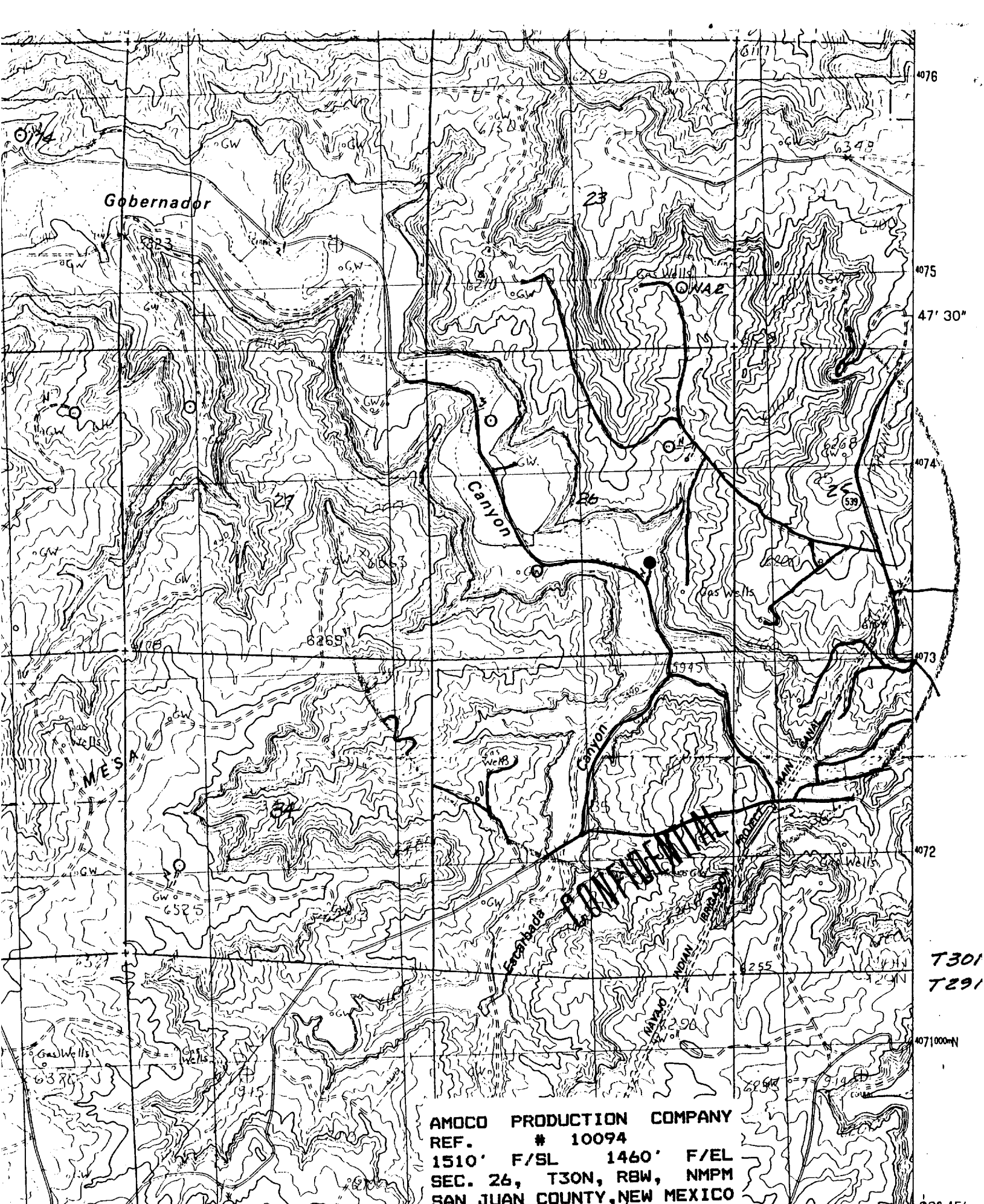
Signature & Seal of
Professional Surveyor

Gary

Certification No.

7016





AMOCO PRODUCTION COMPANY
REF. # 10094
1510' F/SL 1460' F/EL
SEC. 26, T30N, RBW, NMPM
SAN JUAN COUNTY, NEW MEXICO

— NEW ROAD
— EXISTING ROADS

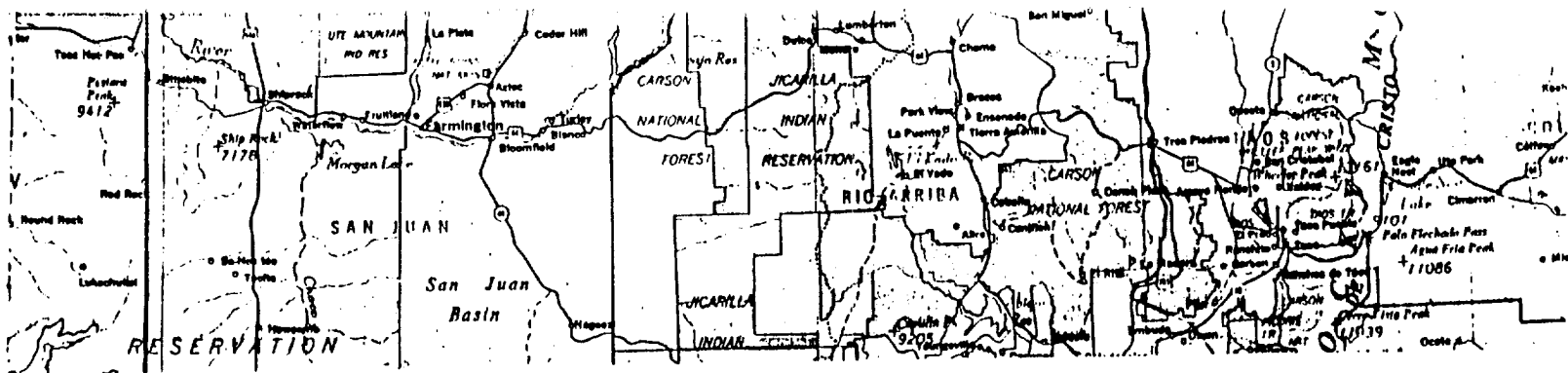
NEW MEXICO

INTERIOR-GEOLOGICAL SURVEY, RESTON, VIRGINIA-1985

ROAD LEGEND

T30N
T29N

DEL



REF. # 10094
 1510' F/SL 1460' F/EL
 SEC. 26, T30N, RBW, NMPM
 RAIL POINT: 16.5 miles from Montrose, CO
 MUD POINT: 22 miles from Aztec, NM
 CEMENT POINT: 44 miles from Farmington, NM

