

Submit to Appropriate
District Office
State Lease - 6 copies
Fee Lease - 5 copies

State of New Mexico
Energy, Minerals and Natural Resources Department

Form C-101
Revised 1-1-89

OIL CONSERVATION DIVISION

DISTRICT I
P.O. Box 1980, Hobbs, NM 88240

DISTRICT II
P.O. Drawer DD, Artesia, NM 88210

DISTRICT III
1000 Rio Brazos Rd., Aztec, NM 87410

P.O. Box 2088
Santa Fe, New Mexico 87504-2088

API NO. (assigned by OCD on New Wells)

30-045-29059

5. Indicate Type of Lease

STATE ☐

FEE ☒

6. State Oil & Gas Lease No.

APPLICATION FOR PERMIT TO DRILL, DEEPEN, OR PLUG BACK

1a. Type of Work:

DRILL ☒

RE-ENTER ☐

DEEPEN ☐

PLUG BACK ☐

b. Type of Well:

OIL
WELL ☐

GAS
WELL ☒

OTHER

SINGLE
ZONE ☒

MULTIPLE
ZONE ☐

7. Lease Name or Unit Agreement Name

APPERSON 30-11-30

13357

2. Name of Operator

SG INTERESTS I LTD/MARALEX RESOURCES, INC.

8. Well No.

#2

3. Address of Operator

PO Box 338, Ignacio, CO 81137

9. Pool name or Wildcat

Basin Fruitland Coal 71629

4. Well Location

Unit Letter

K

: 1708

Feet From The

South

Line and

1808

Feet From The

West

Line

Section

30

Township

30 North

Range

11 West

NMPM

San Juan

County

10. Proposed Depth

2250'

11. Formation

Fruitland Coal

12. Rotary or C.T.

Rotary

13. Elevations (Show whether DF, RT, GR, etc.)

5731' GR

14. Kind & Status Plug. Bond

Blanket

15. Drilling Contractor

Unknown

16. Approx. Date Work will start

Immediately upon approval

17.

PROPOSED CASING AND CEMENT PROGRAM

SIZE OF HOLE	SIZE OF CASING	WEIGHT PER FOOT	SETTING DEPTH	SACKS OF CEMENT	EST. TOP
12-1/4"	8-5/8"	24# J-55	250'	190 sx Class B	Surface
7-7/8"	5-1/2"	15.5# J-55	2250'	122 sx Class B	Surface
				Tail w/100 sx	

Class B + additives

SG Interests I, Ltd/Maralex Resources, Inc. proposes to drill a vertical hole to develop the Fruitland Coal Formation at the above described site. The well will be drilled with LSND mud. A double ram type BOP will be used to maintain well control at all times during the drilling of the well. Sketches of the BOP and choke assembly are included as exhibits to this application. A full suite of logs will be run upon reaching TD. Both strings of casing will be cemented back to surface. A minimum of ten centralizers will be used to optimize placement of the cement around the pipe on the long string.

2 DIST
OIL CON DIV
JAN 6 1994

IN ABOVE SPACE DESCRIBE PROPOSED PROGRAM: IF PROPOSAL IS TO DEEPEN OR PLUG BACK, GIVE DATA ON PRESENT PRODUCTION AND PROPOSED NEW PRODUCTION ZONE. GIVE BLOWOUT PREVENTER PROGRAM, IF ANY.

I hereby certify that the information above is true and complete to the best of my knowledge and belief.

SIGNATURE

A. M. O'Hare

TITLE

President AGENT
for SG Interests I LTD.

DATE January 18, 1994

TYPE OR PRINT NAME

A. M. O'Hare

TELEPHONE NO. (303) 563-4000

(This space for State Use)

APPROVED BY

Eric Burch

TITLE

DEPUTY OIL & GAS INSPECTOR, DIST. #3

DATE

JAN 26 1994

CONDITIONS OF APPROVAL, IF ANY:

This Approval

Expires 1-26-95

And Will Not Be

Extended

DISTRICT I
P.O. Box 1930, Hobbs, NM 88240

DISTRICT II
P.O. Drawer DD, Artesia, NM 88210

DISTRICT III
1000 Rio Brazos Rd., Aztec, NM 87410

OIL CONSERVATION DIVISION

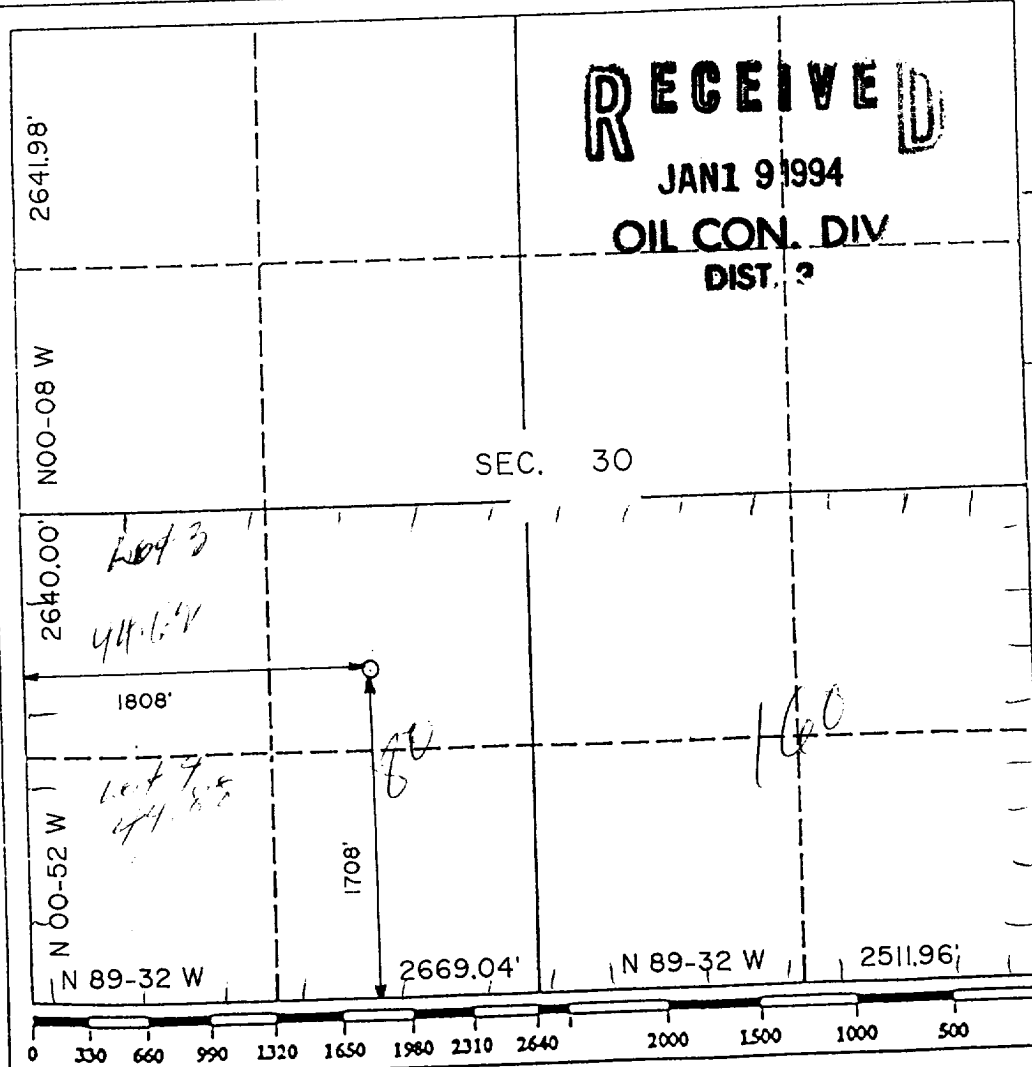
P.O. Box 2088
Santa Fe, New Mexico 87504-2088

WELL LOCATION AND ACREAGE DEDICATION PLAT

All Distances must be from the outer boundaries of the section

Operator MARALEX RESOURCES SG Interest LTD		Lease APPERSON 30-11-30		Well No. NO. 2
Unit Letter K	Section 30	Township 30 NORTH	Range 11 WEST	County SAN JUAN
Actual Footage Location of Well: 1708 feet from the SOUTH line and 1808 feet from the WEST line				
Ground level Elev. 5731	Producing Formation Fruitland Coal	Pool Basin Fruitland Coal	Dedicated Acreage: 320 ^{29.50} Acres	

1. Outline the acreage dedicated to the subject well by colored pencil or hatchure marks on the plat below.
2. If more than one lease is dedicated to the well, outline each and identify the ownership thereof (both as to working interest and royalty).
3. If more than one lease of different ownership is dedicated to the well, have the interest of all owners been consolidated by communitization, unitization, force-pooling, etc.?
☐ Yes ☐ No If answer is "yes" type of consolidation _____
- If answer is "no" list the owners and tract descriptions which have actually been consolidated. (Use reverse side of this form if necessary.) _____
- No allowable will be assigned to the well until all interests have been consolidated (by communitization, unitization, forced-pooling, or otherwise) or until a non-standard unit, eliminating such interest, has been approved by the Division.



OPERATOR CERTIFICATION

I hereby certify that the information contained herein is true and complete to the best of my knowledge and belief.

Signature	<i>A. M. O'Hare</i>
Printed Name	A. M. O'Hare
Position	President AGENT
Company	SG INTERESTS & Maralex Resources, Inc. LTD
Date	January 18, 1994

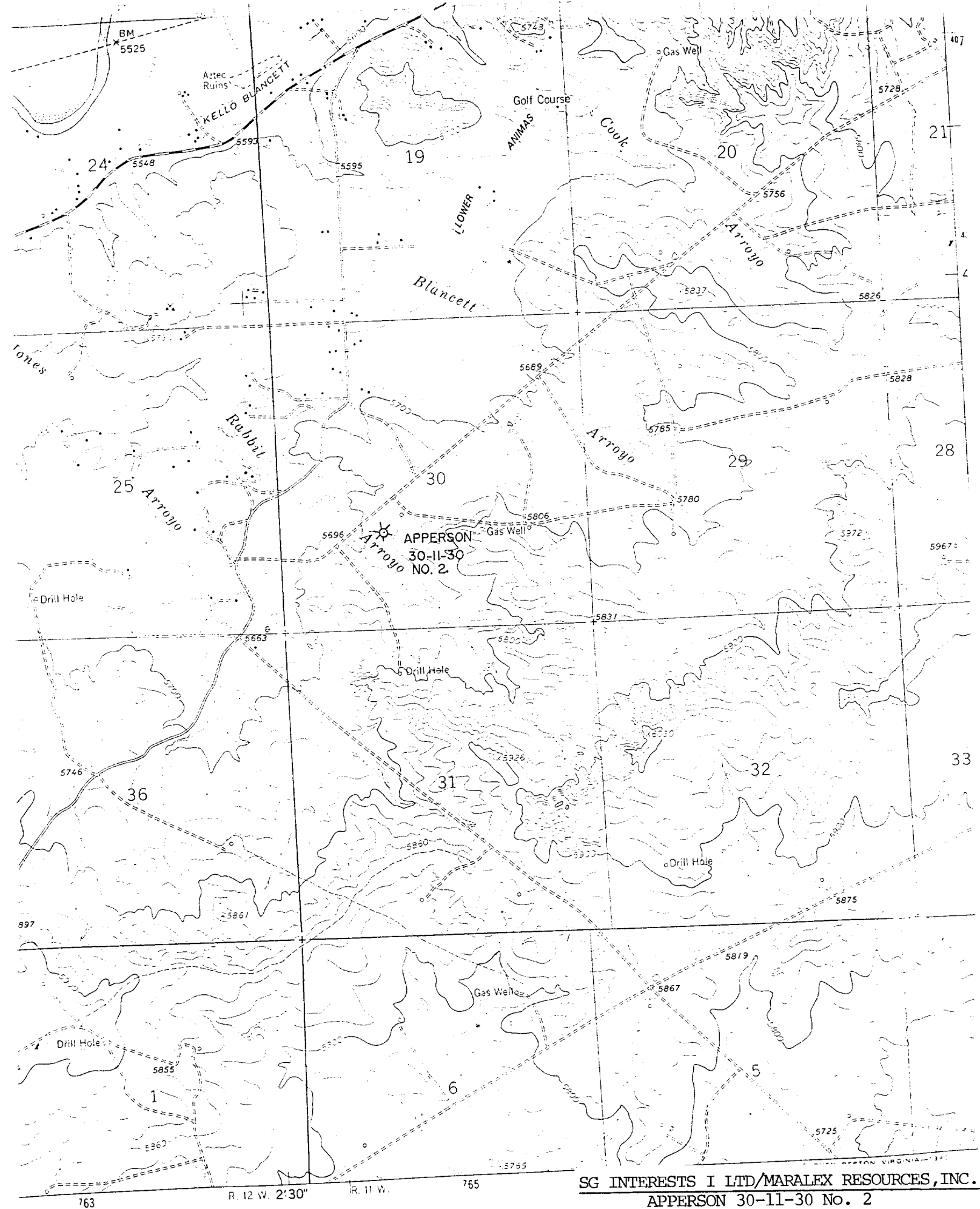
SURVEYOR CERTIFICATION

I hereby certify that the well location shown on this plat was plotted from field notes of actual surveys made by me or under my supervision, and that the same is true and correct to the best of my knowledge and belief.

Date Surveyed
JANUARY 11, 1994

Signature & Seal of
Professional Surveyor

ROY A. RUSH
RECORDS
1894
PROFESSIONAL LAND SURVEYOR



SG INTERESTS I LTD/MARALEX RESOURCES, INC.

APPERSON 30-11-30 No. 2

1708' FSL, 1808' FWL

Sec 30-T30N-R11W

SAN JUAN COUNTY, NEW MEXICO

BLOWOUT PREVENTION EQUIPMENT SPECIFICATIONS

1. All BOP equipment shall be fluid and/or mechanically operated.
2. BOP's and all fittings will be in good working condition.
3. Equipment through which the bit must pass shall be at least as large as the casing size being drilled.
4. The nipple above the BOP shall be at least the same size as the last casing set.
5. The upper kelly cock with handle and lower kelly cock shall be rated at the BOP working pressure.
6. A floor safety valve (full opening) or drill string BOP with appropriate pressure ratings shall be available on the rig floor with connections or subs to fit any tool joint in the string.
7. The minimum size choke line shall be 3 inches nominal diameter, with a minimum size for vent lines downstream of chokes of 2 inches nominal, and vent lines which bypass shall be a minimum of 3 inches nominal and as straight as possible.
8. All valves, fittings and lines between the closing unit and the blowout preventer stack should be of steel construction with rated working pressure at least equal to working pressure rating of the stack. Lines shall be bundled and protected from damage.
9. Minimum size for kill line is 2 inches nominal.
10. Ram type preventers shall be equipped with extension hand wheels or hydraulic locks.

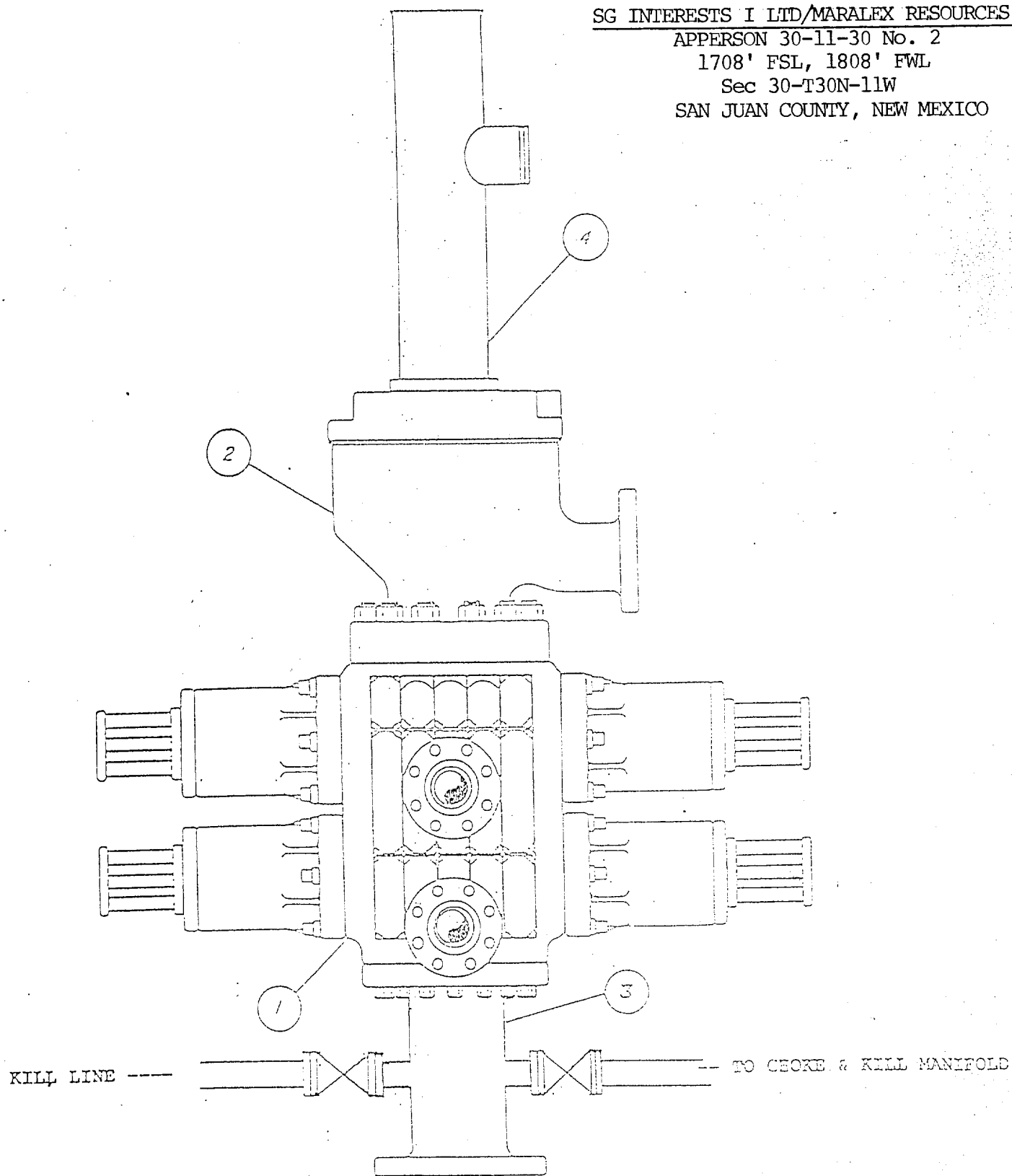
SG INTERESTS I LTD/MARALEX RESOURCES, INC.

APPERSON 30-11-30 No. 2

1708' FSL, 1808' FWL

Sec 30-T30N-11W

SAN JUAN COUNTY, NEW MEXICO



- | | |
|---|---|
| ① | DOUBLE RAM 3000 LB. MANUAL LOCK BLOWOUT PREVENTER |
| ② | ROTATING HEAD IF AIR OR GAS DRILLING |
| ③ | SPOOL W/2" MINIMUM KILL LINE VALVE & KILL LINE |
| ④ | DRILLING FLOW NIPPLE |

CHOKE MANIFOLD SCHEMATIC

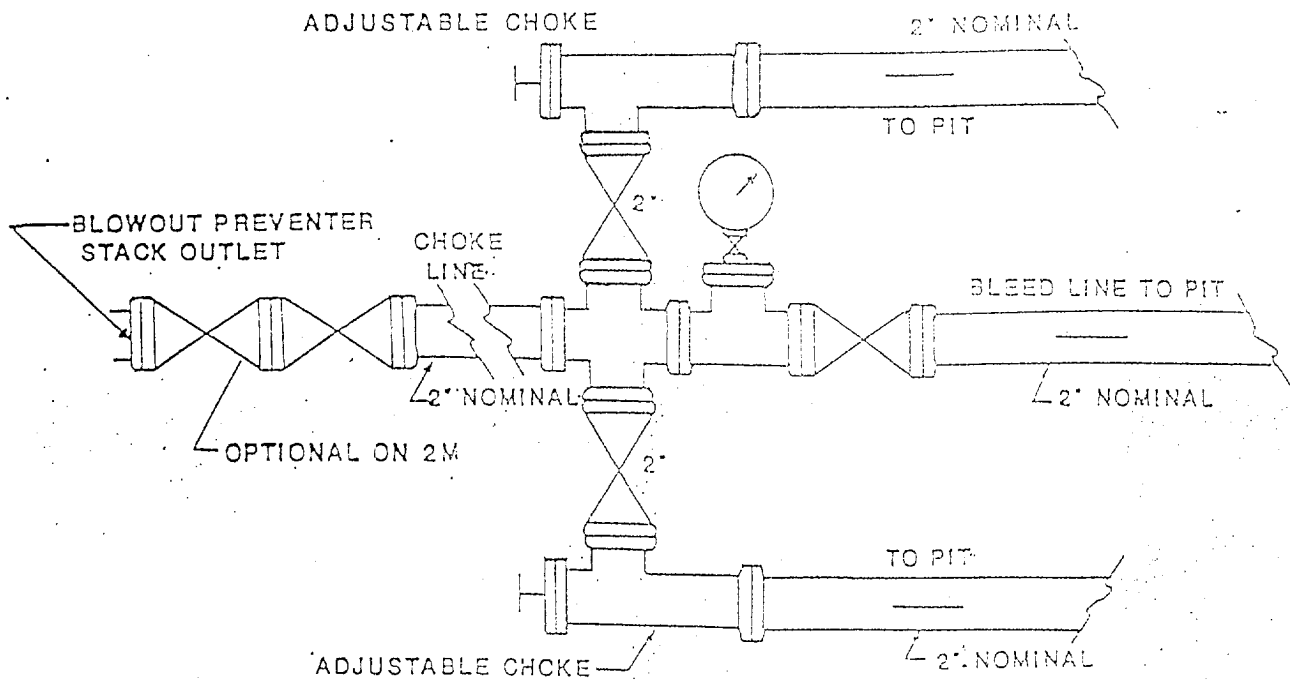
SG INTERESTS I LTD/MARALEX RESOURCES, INC.

APPERSON 30-11-30 No. 2

1708' FSL, 1808' FWL

Sec 30-T30N-R11W

SAN JUAN COUNTY, NEW MEXICO



FOR 2,000 AND 3,000 PSI RATED
WORKING PRESSURE

UPPER KELLY COCK VALVE WITH HANDLE AVAILABLE

SAFETY VALVE AND SUBS TO FIT ALL DRILL STRINGS
IN USE WILL BE AVAILABLE