

UNITED STATES  
DEPARTMENT OF THE INTERIOR  
BUREAU OF LAND MANAGEMENT

30-045-29119

APPLICATION FOR PERMIT TO DRILL, DEEPEN, OR PLUG BACK

1a. TYPE OF WORK

DRILL ☒

DEEPEN ☐

PLUG BACK ☐

b. TYPE OF WELL

OIL  
WELL ☐

GAS  
WELL ☒

OTHER

SINGLE  
ZONE ☒

MULTIPLE  
ZONE ☐

2. NAME OF OPERATOR

20572 SG INTERESTS LTD / MARALEX (303) 563-4000

3. ADDRESS OF OPERATOR

P.O. Box 338, Ignacio, Colorado 81137

4. LOCATION OF WELL (Report location clearly and in accordance with any State requirements.)  
At surface

1180' FSL, 1280' FWL Sec.3-T30N-R10W

At proposed prod. zone

Same

14. DISTANCE IN MILES AND DIRECTION FROM NEAREST TOWN OR POST OFFICE\*

9 Miles

15. DISTANCE FROM PROPOSED\*

LOCATION TO NEAREST  
PROPERTY OR LEASE LINE, FT.  
(Also to nearest drlg. unit line, if any)

1100'

16. NO. OF ACRES IN LEASE

2538.18

17. NO. OF ACRES ASSIGNED  
TO THIS WELL

5/320 328.37

18. DISTANCE FROM PROPOSED LOCATION\*

TO NEAREST WELL, DRILLING, COMPLETED,  
OR APPLIED FOR, ON THIS LEASE, FT.

600'

19. PROPOSED DEPTH

3202'

20. ROTARY OR CABLE TOOLS

Rotary

21. ELEVATIONS (Show whether DE, RT, GR, etc.)

GL 6334'

22. APPROX. DATE WORK WILL START\*

Feb. '94

23.

This action is subject to technical and  
procedural review pursuant to the  
and appeal pursuant to 43 CFR 3165.4.

GENERAL REQUIREMENTS  
SUBJECT IS COMPLIANT WITH ATTACHED

SIZE OF HOLE	SIZE OF CASING	WEIGHT PER FOOT	SETTING DEPTH	
12-1/4"	8-5/8"	24	300'	200 sx Class B w/ 2% CaCl <sub>2</sub>
7-7/8"	5-1/2"	15.5	3202'	480 sx Class B

~~Maralex~~ Resources, Inc. proposes to drill a vertical well to develop the Fruitland Coal Formation at the above described site in accordance with the attached drilling and surface use programs.

An Archaeological survey will be conducted to determine any potential sites.

All of the access road for this well is located on this lease, so no right-of-way application is required.

RECEIVED  
MAY 19 1994

IN ABOVE SPACE DESCRIBE PROPOSED PROGRAM: If proposal is to deepen or plug back, give data on present productive zone and proposed new productive zone. If proposal is to drill or deepen directionally, give pertinent data on subsurface location and depth and any vertical depths. Give blowout preventer program, if any.

OIL CON. DIV.  
DIST. 3

24.

SIGNED

D. R. Kerner

TITLE

AGENT  
Engineering Manager

DATE

1/8/94

(This space for Federal or State office use)

PERMIT NO.

APPROVAL DATE

APPROVED  
AS AMENDED

APPROVED BY

CONDITIONS OF APPROVAL, IF ANY:

TITLE

INMOCD

DATE

FEB 14 1994

DISTRICT MANAGER

\*See Instructions On Reverse Side

Title 18 U.S.C. Section 1001, makes it a crime for any person knowingly and willfully to make to any department or agency of the United States any false, fictitious or fraudulent statements or representations as to any matter within its jurisdiction.

APPROVED  
RECEIVED  
DISTRICT MANAGER

RECEIVED  
MAY 19 1994  
OIL CON. DIV.  
DIST. 3

# OIL CONSERVATION DIVISION

P.O. Box 2088  
Santa Fe, New Mexico 87504-2088

Submit to Appropriate  
District Office  
State Lease - 4 copies  
Fee Lease - 3 copies

DISTRICT I  
P.O. Box 1930, Hobbs, NM 88240

DISTRICT II  
P.O. Drawer DD, Artesia, NM 88210

DISTRICT III  
1000 Rio Brazos Rd., Amarillo, NM 87410

## WELL LOCATION AND ACREAGE DEDICATION PLAT

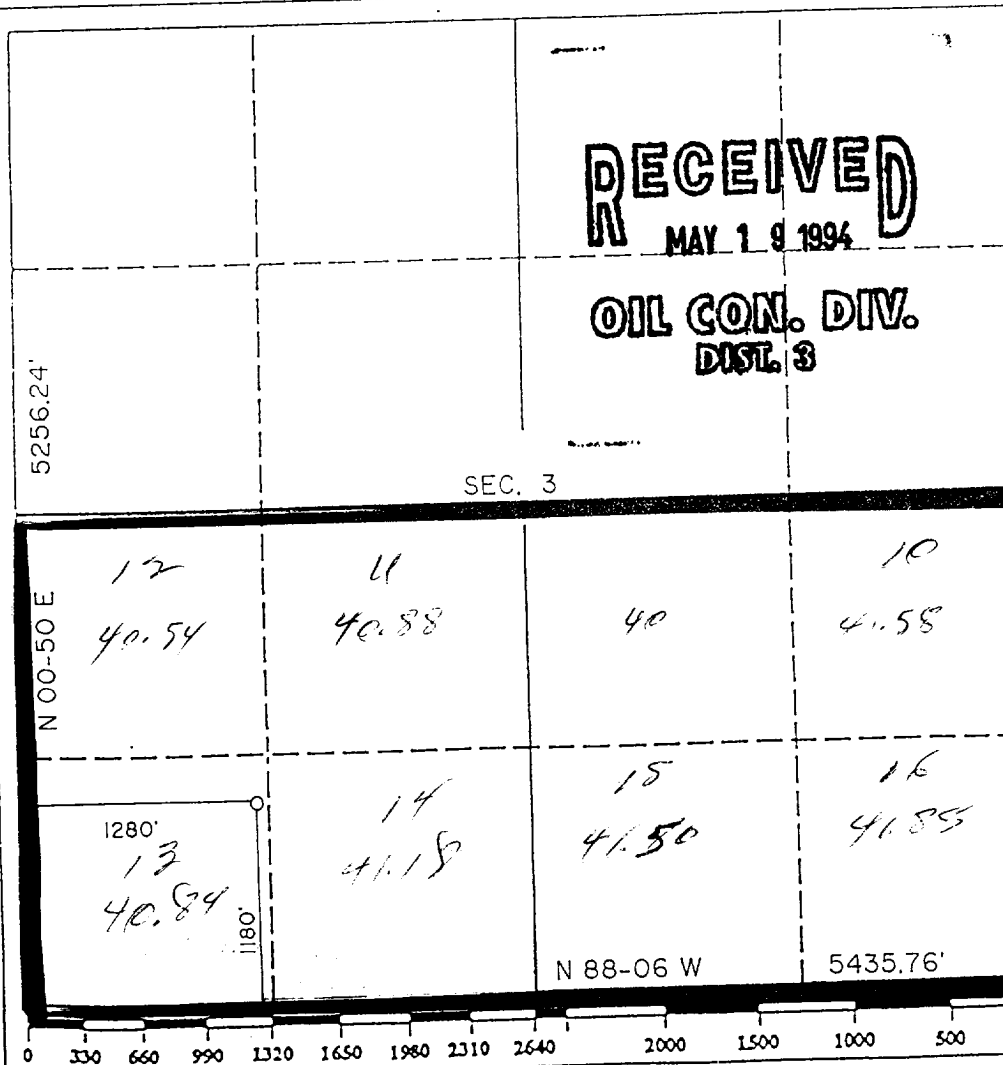
All Distances must be from the outer boundaries of the section

Operator <b>36 INTEREST, LTD</b> <b>MARALEX RESOURCES</b>			Lease <b>HART CANYON 3</b>		Well No. <b>8-2</b>
Unit Letter <b>M</b>	Section <b>3</b>	Township <b>30 NORTH</b>	Range <b>10 WEST</b>	County <b>SAN JUAN</b>	
Actual Footage Location of Well: <b>1180</b> feet from the <b>SOUTH</b> line and <b>1280</b> feet from the <b>WEST</b> line					
Ground level Elev. <b>6334</b>	Producing Formation <b>Coal</b>		Pool <b>Basin Flat</b>	Dedicated Acreage: <b>32.837</b> Acres	

- Outline the acreage dedicated to the subject well by colored pencil or hatchure marks on the plat below.
- If more than one lease is dedicated to the well, outline each and identify the ownership thereof (both as to working interest and royalty).
- If more than one lease of different ownership is dedicated to the well, have the interest of all owners been consolidated by communitization, unitization, force-pooling, etc.?
 

☐ Yes ☐ No
 

If answer is "yes" type of consolidation \_\_\_\_\_  
 If answer is "no" list the owners and tract descriptions which have actually been consolidated. (Use reverse side of this form if necessary.) \_\_\_\_\_  
 No allowable will be assigned to the well until all interests have been consolidated (by communitization, unitization, forced-pooling, or otherwise) or until a non-standard unit, eliminating such interest, has been approved by the Division.



### OPERATOR CERTIFICATION

I hereby certify that the information contained herein is true and complete to the best of my knowledge and belief.

Signature D. R. Reimers  
 Printed Name Dennis R. Reimers  
 Position Engineering Manager  
 Company MARALEX Resources  
 Date 1/8/94

### SURVEYOR CERTIFICATION

I hereby certify that the well location shown on this plat was plotted from field notes of actual surveys made by me or under my supervision, and that the same is true and correct to the best of my knowledge and belief.

Date Surveyed DECEMBER 3, 1993  
 Signature & Seal of Professional Surveyor ROY A. RUSH  
 Certificate No. 8894

RECEIVED  
JAN 10 1964  
U.S. AIR FORCE

U.S. AIR FORCE  
OFFICE OF THE  
JOINT CHIEFS OF STAFF

