

UNITED STATES
DEPARTMENT OF THE INTERIOR
BUREAU OF LAND MANAGEMENT

APPLICATION FOR PERMIT TO DRILL, DEEPEN, OR PLUG BACK

1a. TYPE OF WORK

DRILL ☒

DEEPEN ☐

PLUG BACK ☐

b. TYPE OF WELL

OIL
WELL ☐

GAS
WELL ☒

OTHER

SINGLE
ZONE ☒

MULTIPLE
ZONE ☐

2. NAME OF OPERATOR

S. G. INTERESTS LTD/MARALEX RESOURCES, INC. (303) 563-4000

3. ADDRESS OF OPERATOR

P. O. Box 338, Ignacio, Colorado 81137

4. LOCATION OF WELL (Report location clearly and in accordance with any State requirements.)

At surface

956' FNL, 1168' FEL Sec. 3-T30N-R10W

At proposed prod. zone

Same

14. DISTANCE IN MILES AND DIRECTION FROM NEAREST TOWN OR POST OFFICE*

8.5 miles

15. DISTANCE FROM PROPOSED*

LOCATION TO NEAREST
PROPERTY OR LEASE LINE, FT.
(Also to nearest drlg. unit line, if any)

956'

16. NO. OF ACRES IN LEASE

2480.680 2538.18

18. DISTANCE FROM PROPOSED LOCATION*

TO NEAREST WELL, DRILLING, COMPLETED,
OR APPLIED FOR, ON THIS LEASE, FT.

500'

19. PROPOSED DEPTH

3209'

17. NO. OF ACRES ASSIGNED

TO THIS WELL

N/320

20. ROTARY OR CABLE TOOLS

Rotary

21. ELEVATIONS (Show whether DF, RT, GR, etc.)

GL 6329'

22. APPROX. DATE WORK WILL START*

Upon BLM Approval

23. PROPOSED CASING AND CEMENTING PROGRAM

DRILLING OPERATIONS AUTHORIZED ARE

SUBJECT TO COMPLIANCE WITH ATTACHED

GENERAL QUANTITY OF CEMENT

SIZE OF HOLE	SIZE OF CASING	WEIGHT PER FOOT	SETTING DEPTH
12-1/4"	8-5/8"	24	300
7-1/8"	5-1/2"	15.5	TD

200 Sx Class B plus 2% CaCl2
480 Sx Class B

Maralex Resources, Inc. proposes to drill a vertical well to develop the Fruitland Coal Formation at the above described site in accordance with the attached drilling and surface use programs.

An archaeological survey will be conducted to determine any potential sites.

All of the access road for this well is located on this lease, so no right-of-way application is required.

RECEIVED
JUN 17 1994

OIL CON. DIV.

RECEIVED
JAN 18 1994

OIL CON. DIV.
DIST. 3

IN ABOVE SPACE DESCRIBE PROPOSED PROGRAM: If proposal is to deepen or plug back, give data on present productive zone and proposed new productive zone. If proposal is to drill or deepen directionally, give pertinent data on subsurface locations and measured and true vertical depths. Give blowout preventer program, if any.

24.

SIGNED

A. R. Rasmussen

TITLE

AGENT Engineering Manager

DATE

1/8/94

(This space for Federal or State office use)

PERMIT NO.

APPROVAL DATE

APPROVED BY

TITLE

CONDITIONS OF APPROVAL, IF ANY:

NMOCD

APPROVED
AS AMENDED

JAN 14 1994

DISTRICT MANAGER

*See Instructions On Reverse Side

Title 18 U.S.C. Section 1001, makes it a crime for any person knowingly and willfully to make any statement or representation to any department or agency of the United States any false, fictitious or fraudulent statements or representations as to any matter within its jurisdiction.

Submit to Appropriate
District Office
State Lease - 4 copies
Fee Lease - 3 copies

State of New Mexico
Energy, Minerals and Natural Resources Department

Revised 1-1-89

OIL CONSERVATION DIVISION

P.O. Box 2088
Santa Fe, New Mexico 87504-2088

DISTRICT I
P.O. Box 1930, Hobbs, NM 88240

DISTRICT II
P.O. Drawer DD, Artesia, NM 88210

DISTRICT III
1000 Rio Brazos Rd., Aztec, NM 87410

WELL LOCATION AND ACREAGE DEDICATION PLAT

All Distances must be from the outer boundaries of the section

Operator MARALEX RESOURCES		Lease SC INTERESTS I LTD		Well No. 3-1	
Unit Letter A	Section 3	Township 30 NORTH	Range 10 WEST	County SAN JUAN	
Actual Footage Location of Well: 956 feet from the NORTH line and 1168 feet from the EAST line					
Ground level Elev. 6329	Producing Formation Coal		Pool Basin St		Dedicated Acreage: N/325.41 Acres

- Outline the acreage dedicated to the subject well by colored pencil or hatchure marks on the plat below.
- If more than one lease is dedicated to the well, outline each and identify the ownership thereof (both as to working interest and royalty).
- If more than one lease of different ownership is dedicated to the well, have the interest of all owners been consolidated by communization, unitization, force-pooling, etc.?
☐ Yes ☐ No If answer is "yes" type of consolidation _____
If answer is "no" list the owners and tract descriptions which have actually been consolidated. (Use reverse side of this form if necessary.)
No allowable will be assigned to the well until all interests have been consolidated (by communization, unitization, forced-pooling, or otherwise) or until a non-standard unit, eliminating such interest, has been approved by the Division.

OPERATOR CERTIFICATION

I hereby certify that the information contained herein is true and complete to the best of my knowledge and belief.

Signature *D.R. Reimers*
Printed Name **Dennis R. Reimers**
Position **AGENT**
Company **SC INTERESTS I LTD**
MARALEX Resources
Date **Jan. 8, 1994**

SURVEYOR CERTIFICATION

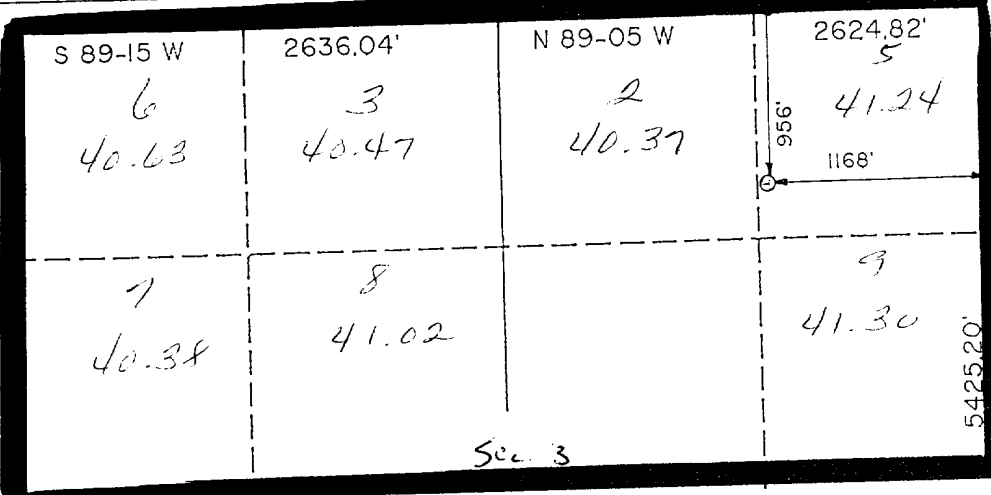
I hereby certify that the well location shown on this plat was plotted from field notes of actual surveys made by me or under my supervision, and that the same is true and correct to the best of my knowledge and belief.

Date Surveyed
DECEMBER 2, 1993

Signature & Seal of
Professional Surveyor

ROY A. RUSH 8304

Certificate No. **PROFESSIONAL LAND SURVEYOR**



RECEIVED

JAN 9 1994

OIL CON. DIV.
DIST. 3

RECEIVED

JUN 17 1994

OIL CON. DIV.
DIST. 3

0 330 660 990 1320 1650 1980 2310 2640 2970 3300 3630 3960 4290 4620 4950 5280 5610 5940 6270 6600 6930 7260 7590 7920 8250 8580 8910 9240 9570 9900 10230 10560 10890 11220 11550 11880 12210 12540 12870 13200 13530 13860 14190 14520 14850 15180 15510 15840 16170 16500 16830 17160 17490 17820 18150 18480 18810 19140 19470 19800 20130 20460 20790 21120 21450 21780 22110 22440 22770 23100 23430 23760 24090 24420 24750 25080 25410 25740 26070 26400 26730 27060 27390 27720 28050 28380 28710 29040 29370 29700 30030 30360 30690 31020 31350 31680 32010 32340 32670 33000 33330 33660 33990 34320 34650 34980 35310 35640 35970 36300 36630 36960 37290 37620 37950 38280 38610 38940 39270 39600 39930 40260 40590 40920 41250 41580 41910 42240 42570 42900 43230 43560 43890 44220 44550 44880 45210 45540 45870 46200 46530 46860 47190 47520 47850 48180 48510 48840 49170 49500 49830 50160 50490 50820 51150 51480 51810 52140 52470 52800 53130 53460 53790 54120 54450 54780 55110 55440 55770 56100 56430 56760 57090 57420 57750 58080 58410 58740 59070 59400 59730 60060 60390 60720 61050 61380 61710 62040 62370 62700 63030 63360 63690 64020 64350 64680 65010 65340 65670 66000 66330 66660 66990 67320 67650 67980 68310 68640 68970 69300 69630 69960 70290 70620 70950 71280 71610 71940 72270 72600 72930 73260 73590 73920 74250 74580 74910 75240 75570 75900 76230 76560 76890 77220 77550 77880 78210 78540 78870 79200 79530 79860 80190 80520 80850 81180 81510 81840 82170 82500 82830 83160 83490 83820 84150 84480 84810 85140 85470 85800 86130 86460 86790 87120 87450 87780 88110 88440 88770 89100 89430 89760 90090 90420 90750 91080 91410 91740 92070 92400 92730 93060 93390 93720 94050 94380 94710 95040 95370 95700 96030 96360 96690 97020 97350 97680 98010 98340 98670 99000 99330 99660 99990 100320 100650 100980 101310 101640 101970 102300 102630 102960 103290 103620 103950 104280 104610 104940 105270 105600 105930 106260 106590 106920 107250 107580 107910 108240 108570 108900 109230 109560 109890 110220 110550 110880 111210 111540 111870 112200 112530 112860 113190 113520 113850 114180 114510 114840 115170 115500 115830 116160 116490 116820 117150 117480 117810 118140 118470 118800 119130 119460 119790 120120 120450 120780 121110 121440 121770 122100 122430 122760 123090 123420 123750 124080 124410 124740 125070 125400 125730 126060 126390 126720 127050 127380 127710 128040 128370 128700 129030 129360 129690 130020 130350 130680 131010 131340 131670 132000 132330 132660 132990 133320 133650 133980 134310 134640 134970 135300 135630 135960 136290 136620 136950 137280 137610 137940 138270 138600 138930 139260 139590 139920 140250 140580 140910 141240 141570 141900 142230 142560 142890 143220 143550 143880 144210 144540 144870 145200 145530 145860 146190 146520 146850 147180 147510 147840 148170 148500 148830 149160 149490 149820 150150 150480 150810 151140 151470 151800 152130 152460 152790 153120 153450 153780 154110 154440 154770 155100 155430 155760 156090 156420 156750 157080 157410 157740 158070 158400 158730 159060 159390 159720 160050 160380 160710 161040 161370 161700 162030 162360 162690 163020 163350 163680 164010 164340 164670 165000 165330 165660 165990 166320 166650 166980 167310 167640 167970 168300 168630 168960 169290 169620 169950 170280 170610 170940 171270 171600 171930 172260 172590 172920 173250 173580 173910 174240 174570 174900 175230 175560 175890 176220 176550 176880 177210 177540 177870 178200 178530 178860 179190 179520 179850 180180 180510 180840 181170 181500 181830 182160 182490 182820 183150 183480 183810 184140 184470 184800 185130 185460 185790 186120 186450 186780 187110 187440 187770 188100 188430 188760 189090 189420 189750 190080 190410 190740 191070 191400 191730 192060 192390 192720 193050 193380 193710 194040 194370 194700 195030 195360 195690 196020 196350 196680 197010 197340 197670 198000 198330 198660 198990 199320 199650 199980 200310 200640 200970 201300 201630 201960 202290 202620 202950 203280 203610 203940 204270 204600 204930 205260 205590 205920 206250 206580 206910 207240 207570 207900 208230 208560 208890 209220 209550 209880 210210 210540 210870 211200 211530 211860 212190 212520 212850 213180 213510 213840 214170 214500 214830 215160 215490 215820 216150 216480 216810 217140 217470 217800 218130 218460 218790 219120 219450 219780 220110 220440 220770 221100 221430 221760 222090 222420 222750 223080 223410 223740 224070 224400 224730 225060 225390 225720 226050 226380 226710 227040 227370 227700 228030 228360 228690 229020 229350 229680 230010 230340 230670 231000 231330 231660 231990 232320 232650 232980 233310 233640 233970 234300 234630 234960 235290 235620 235950 236280 236610 236940 237270 237600 237930 238260 238590 238920 239250 239580 239910 240240 240570 240900 241230 241560 241890 242220 242550 242880 243210 243540 243870 244200 244530 244860 245190 245520 245850 246180 246510 246840 247170 247500 247830 248160 248490 248820 249150 249480 249810 250140 250470 250800 251130 251460 251790 252120 252450 252780 253110 253440 253770 254100 254430 254760 255090 255420 255750 256080 256410 256740 257070 257400 257730 258060 258390 258720 259050 259380 259710 260040 260370 260700 261030 261360 261690 262020 262350 262680 263010 263340 263670 264000 264330 264660 264990 265320 265650 265980 266310 266640 266970 267300 267630 267960 268290 268620 268950 269280 269610 269940 270270 270600 270930 271260 271590 271920 272250 272580 272910 273240 273570 273900 274230 274560 274890 275220 275550 275880 276210 276540 276870 277200 277530 277860 278190 278520 278850 279180 279510 279840 280170 280500 280830 281160 281490 281820 282150 282480 282810 283140 283470 283800 284130 284460 284790 285120 285450 285780 286110 286440 286770 287100 287430 287760 288090 288420 288750 289080 289410 289740 290070 290400 290730 291060 291390 291720 292050 292380 292710 293040 293370 293700 294030 294360 294690 295020 295350 295680 296010 296340 296670 297000 297330 297660 297990 298320 298650 298980 299310 299640 299970 300300 300630 300960 301290 301620 301950 302280 302610 302940 303270 303600 303930 304260 304590 304920 305250 305580 305910 306240 306570 306900 307230 307560 307890 308220 308550 308880 309210 309540 309870 310200 310530 310860 311190 311520 311850 312180 312510 312840 313170 313500 313830 314160 314490 314820 315150 315480 315810 316140 316470 316800 317130 317460 317790 318120 318450 318780 319110 319440 319770 320100 320430 320760 321090 321420 321750 322080 322410 322740 323070 323400 323730 324060 324390 324720 325050 325380 325710 326040 326370 326700 327030 327360 327690 328020 328350 328680 329010 329340 329670 330000 330330 330660 330990 331320 331650 331980 332310 332640 332970 333300 333630 333960 334290 334620 334950 335280 335610 335940 336270 336600 336930 337260 337590 337920 338250 338580 338910 339240 339570 339900 340230 340560 340890 341220 341550 341880 342210 342540 342870 343200 343530 343860 344190 344520 344850 345180 345510 345840 346170 346500 346830 347160 347490 347820 348150 348480 348810 349140 349470 349800 350130 350460 350790 351120 351450 351780 352110 352440 352770 353100 353430 353760 354090 354420 354750 355080 355410 355740 356070 356400 356730 357060 357390 357720 358050 358380 358710 359040 359370 359700 360030 360360 360690 361020 361350 361680 362010 362340 362670 363000 363330 363660 363990 364320 364650 364980 365310 365640 365970 366300 366630 366960 367290 367620 367950 368280 368610 368940 369270 369600 369930 370260 370590 370920 371250 371580 371910 372240 372570 372900 373230 373560 373890 374220 374550 374880 375210 375540 375870 376200 376530 376860 377190 377520 377850 378180 378510 378840 379170 379500 379830 380160 380490 380820 381150 381480 381810 382140 382470 382800 383130 383460 383790 384120 384450 384780 385110 385440 385770 386100 386430 386760 387090 387420 387750 388080 388410 388740 389070 389400 389730 390060 390390 390720 391050 391380 391710 392040 392370 392700 393030 393360 393690 394020 394350 394680 395010 395340 395670 396000 396330 396660 396990 397320 397650 397980 398310 398640 398970 399300 399630 399960 400290 400620 400950 401280 401610 401940 402270 402600 402930 403260 403590 403920 404250 404580 404910 405240 405570 405900 406230 406560 406890 407220 407550 407880 408210 408540 408870 409200 409530 409860 410190 410520 410850 411180 411510 411840 412170 412500 412830 413160 413490 413820 414150 414480 414810 415140 415470 415800 416130 416460 416790 417120 417450 417780 418110 418440 418770 419100 419430 419760 420090 420420 420750 421080 421410 421740 422070 422400 422730 423060 423390 423720 424050 424380 424710 425040 425370 425700 426030 426360 426690 427020 427350 427680 428010 428340 428670 429000 429330 429660 429990 430320 430650 430980 431310 431640 431970 432300 432630 432960 433290 433620 433950 434280 434610 434940 435270 435600 435930 436260 436590 436920 437250 437580 437910 438240 438570 438900 439230 439560 439890 440220 440550 440880 441210 441540 441870 442200 442530 442860 443190 443520 443850 444180 444510 444840 445170 445500 445830 446160 446490 446820 447150 447480 447810 448140 448470 448800 449130 449460 449790 450120 450450 450780 451110 451440 451770 452100 452430 452760 453090 453420 453750 454080 454410 454740 455070 455400 455730 456060 456390 456720 457050 457380 457710 458040 458370 458700 459030 459360 459690 460020 460350 460680 461010 461340 461670 462000 462330 462660 462990 463320 463650 463980 464310 464640 464970 465300 465630 465960 466290 466620 466950 467280 467610 467940 468270 468600 468930 469260 469590 469920 470250 470580 470910 471240 471570 471900 472230 472560 472890 473220 473550 473880 474210 474540 474870 475200 475530 475860 476190 476520 476850 477180 477510 477840 478170 478500 478830 479160 479490 479820 480150 480480 480810 481140 481470 481800 482130 482460 482790 483120 483450 483780 484110 484440 484770 485100 485430 485760 486090 486420 486750 487080 487410 487740 488070 488400 488730 489060 489390 489720 490050 490380 490710 491040 491370 491700 492030 492360 492690 493020 493350 493680 494010 494340 494670 495000 495330 495660 495990 496320 496650 496980 497310 497640 497970 498300 498630 498960 499290 499620

SG INTERESTS, LTD / MARALEX RESOURCES, INC.
HART CANYON 3-1
956' FNL, 1168' FWL
SECTION 3, T30N, R10W
SAN JUAN COUNTY, NEW MEXICO
DRILLING PROGRAM

1. Estimated top of important geologic markers:

Ojo Alamo	1651'
Kirtland	1764'
Fruitland	2811'
Pictured Cliffs	3034'

2. Estimated depths of anticipated water, oil, gas or other mineral bearing formations which are expected to be encountered:

Water and gas @ 2811'

3. Minimum blowout control specifications:

Double ram type 3000 psi working pressure BOP with a rotating head. See the attached exhibits (#1 through #3) for details on the BOP equipment. All ram type preventers and related equipment will be hydraulically tested at nipple-up and after any use under pressure to 1000 psi. The blind ram will be hydraulically activated and checked for operational readiness each time pipe is pulled out of the hole. All checks of the BOP stack and equipment will be noted on the daily drilling report. The BOP equipment will include a kelly cock, floor safety valve, and choke manifold all rated to 3000 psi.

4. Supplemental Information:

Cementing of both surface and production strings of casing will be accomplished in separate single stage operations. All cement volumes are calculated to circulate cement to the surface.

<u>Casing</u>	<u>Cement Type and Vol.</u>	<u>Casing Tools</u>
8 5/8", 24 #, J-55	200 sxs Class B w/2% CaCl ₂ (238 ft ³)	Insert float & centralizer on every other joint.
5 1/2", 15.5 #, J-55	380 sxs Class B w/2 % Meta Silicate plus 100 sxs Class B w/2% CaCl ₂ (879 ft ³)	Standard guide shoe & float collar w/ centralizers spaced out every other joint from bottom to just above Ojo Alamo (34 centralizers)

DRILLING PROGRAM - continued

Page Two

5. Proposed circulating Medium:

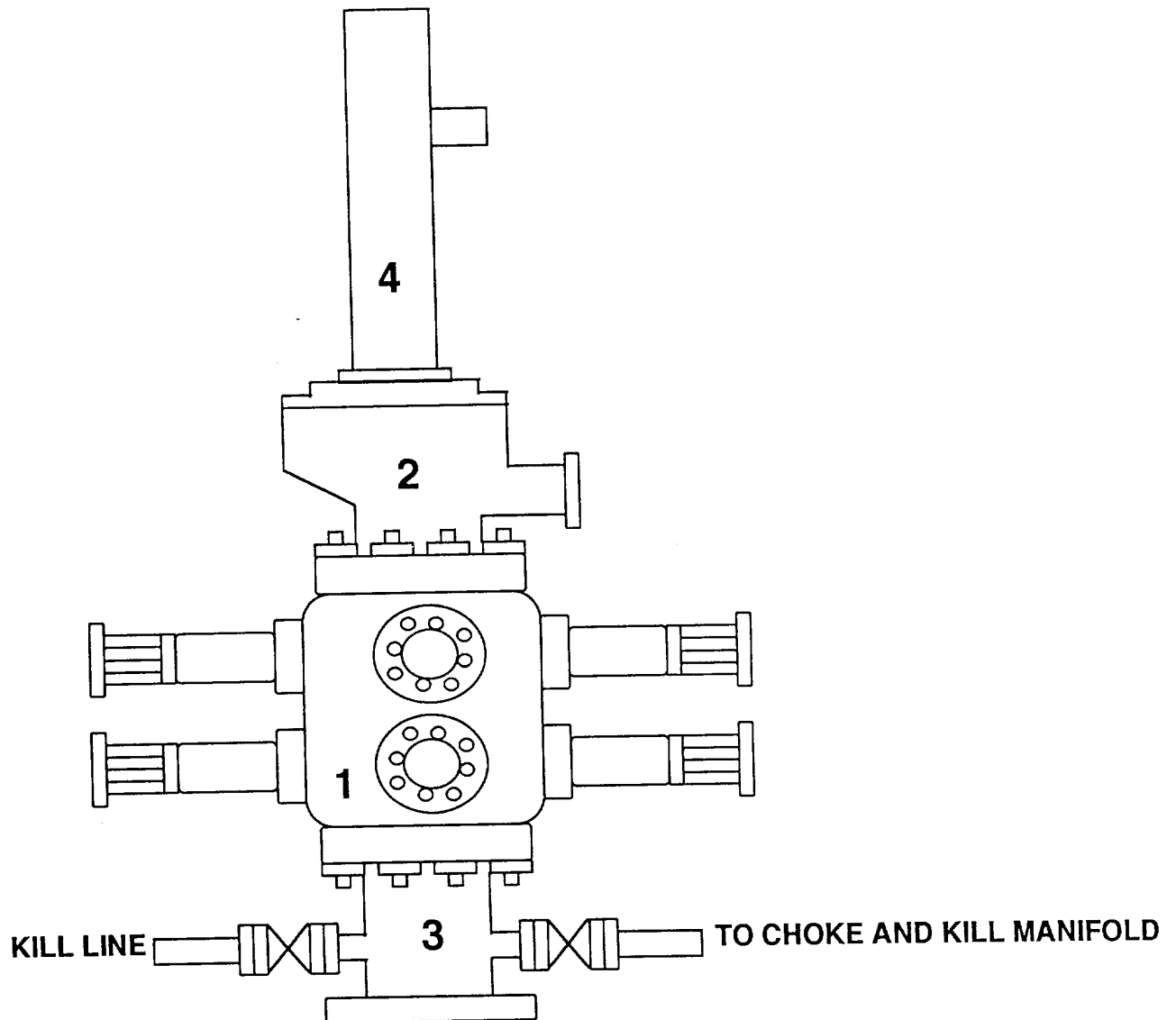
The surface hole will be drilled with a gel and lime based fresh water mud.

The production hole will be drilled with a low solids non-dispersed fresh water mud. The weighting material will be barite. The maximum mud weight expected is 9.0 ppg. The water loss will be reduced to less than 10 cc at the top of the Fruitland.

6. No cores or drill stem tests are planned for this well. A full suite of logs including gamma ray, density porosity, and resistivity, will be run after T>D> is reached.
7. The maximum expected bottom hole pressure is 1200 psi. This pressure will be contained as specified in No. 5 above. No other potential hazards are expected.
8. Optimum solids control equipment will be used to keep the mud in good shape. Construction of the wellpad will begin as soon as the APD is approved.

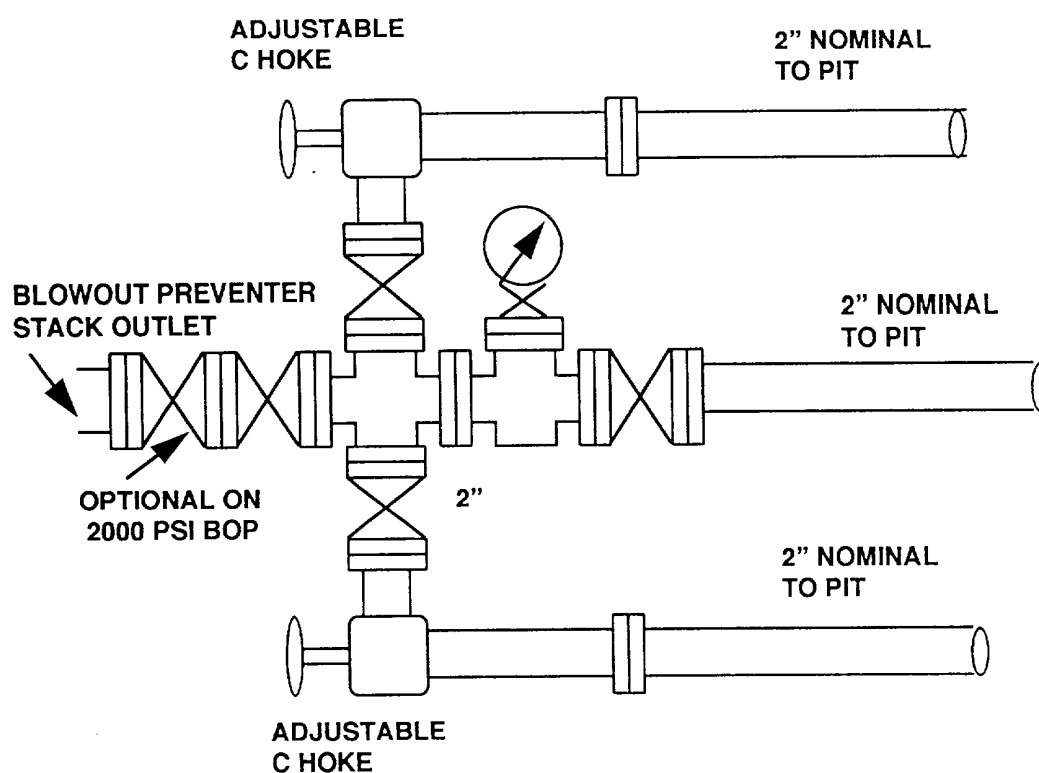
RECEIVED
SLM
94 JAN 14 PM 1:54
070 FARMINGTON, NM

**SG INTEREST / MARALEX RESOURCES INC.
HART CANYON 3-1
956' FNL, 1168' FEL, SEC.3-30N-10W
SAN JUAN COUNTY, NEW MEXICO**



- 1 DOUBLE RAM 3000 LB. MANUAL LOCK BLOWOUT PREVENTER**
- 2 ROTATING HEAD IF AIR OR GAS DRILLING**
- 3 SPOOL W/2" MINIMUM KILL LINE VALVE & KILL LINE**
- 4 DRILLING FLOW NIPPLE**

SG INTEREST / MARALEX RESOURCES INC.
HART CANYON 3-1
956 FNL, 1168 FEL SEC. 3-T30N-R10W



**FOR 2000 & 3000 PSI RATED
WORKING PRESSURE**

UPPER KELLY COCK VALVE WITH HANDLE AVAILABLE
**SAFETY VALVE AND SUBS WILL BE AVAILABLE TO FIT ALL DRILL
STRINGS IN USE**

BLOWOUT PREVENTION EQUIPMENT SPECIFICATIONS

1. All BOP equipment shall be fluid and/or mechanically operated.
2. BOP's and all fittings will be in good working condition.
3. Equipment through which the bit must pass shall be at least as large as the casing size being drilled.
4. The nipple above the BOP shall be at least the same size as the last casing set.
5. The upper kelly cock with handle and lower kelly cock shall be rated at the BOP working pressure.
6. A floor safety valve (full opening) or drill string BOP with appropriate pressure ratings shall be available on the rig floor with connections or subs to fit any tool joint in the string.
7. The minimum size choke line shall be 3 inches nominal diameter, with a minimum size for vent lines downstream of chokes of 2 inches nominal, and vent lines which bypass shall be a minimum of 3 inches nominal and as straight as possible.
8. All valves, fittings and lines between the closing unit and the blowout preventer stack should be of steel construction with rated working pressure at least equal to working pressure rating of the stack. Lines shall be bundled and protected from damage.
9. Minimum size for kill line is 2 inches nominal.
10. Ram type preventers shall be equipped with extension hand wheels or hydraulic locks.

SG INTERESTS, LTD / MARALEX RESOURCES, INC.
HART CANYON 3-1
956' FNL, 1168' FEL
SECTION 3, T30N, R10W
SAN JUAN COUNTY, NEW MEXICO
SURFACE USE PLAN

1. Existing roads and existing wells are shown on Attached Plat No. 1.
2. The new location will be built adjacent to an existing road, No new roads are therefore required.
3. See No. 1.
4. The location of the anticipated production facilities both on and off the well pad are shown on Attached Plat No. 2.
5. Water will be Fruitland Coal Seam produced water, which will be trucked from nearby existing wells.
6. Materials for the construction of the location are expected to be limited to the materials on site. Fill material will be taken from material taken out of cuts.
7. Drill cuttings will be allowed to dry and then spread evenly in the reserve pit and buried. Garbage and nonflammable waste produced during the drilling or testing will be handled in a trash bin and hauled to a licensed disposal area. All fluids will be handled in the reserve pit. fluids will be allowed to evaporate before the reserve pit is reclaimed. The reserve pit will be fenced on three sides while the drilling rig is on location with the fourth side being fenced immediately upon removal of the drilling rig.
8. No camp or airstrip will be constructed for the drilling of this well.
9. The wellsite layout is shown on Attached Plat No. 3.
10. The location will be cleaned up; the reserve pit will be filled and leveled after drying; the unused portion of the location will be reseeded with seed mixture No. 2; all permanent production equipment will be painted BLM tan, and the road and location will be maintained until such time as the well is abandoned.
11. The surface is owned by the United States of America, Bureau of Land Management.
12. The primary surface use is for farming and grazing. The location has been spotted so as to minimize damages to the surface. The nearest dwellings are several miles from this location. An archaeologist survey is being conducted,

and a report detailing the survey will be submitted directly from the Archaeologist to the BLM Office. The dirt contractor will be furnished with an approved copy of the Surface Use Plan and any stipulations prior to beginning construction of the location.

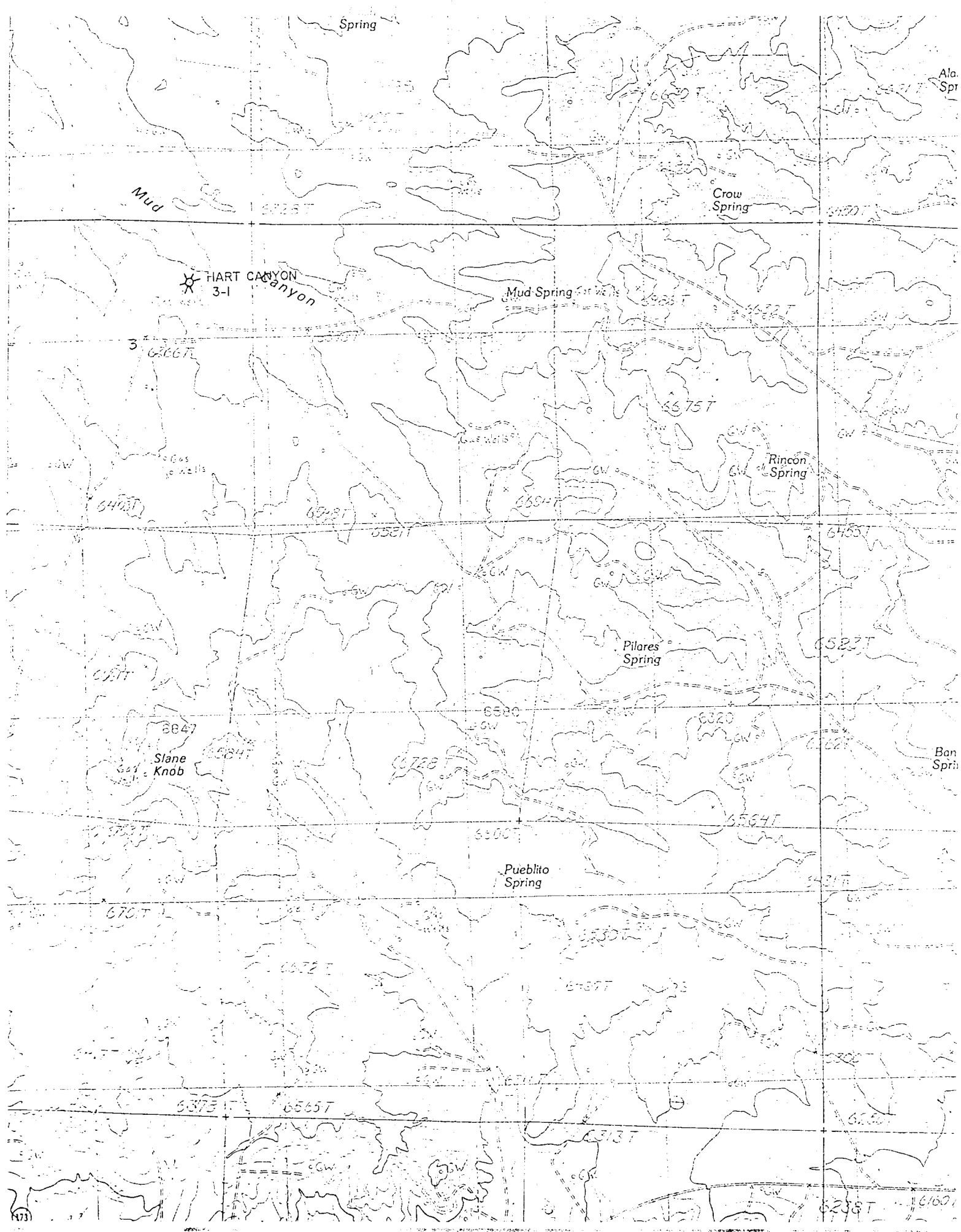
13. Operator's Representative:

A. M. O'Hare
P. O. Box 338
Ignacio, Colorado 81137
Phone (303) 563-4000

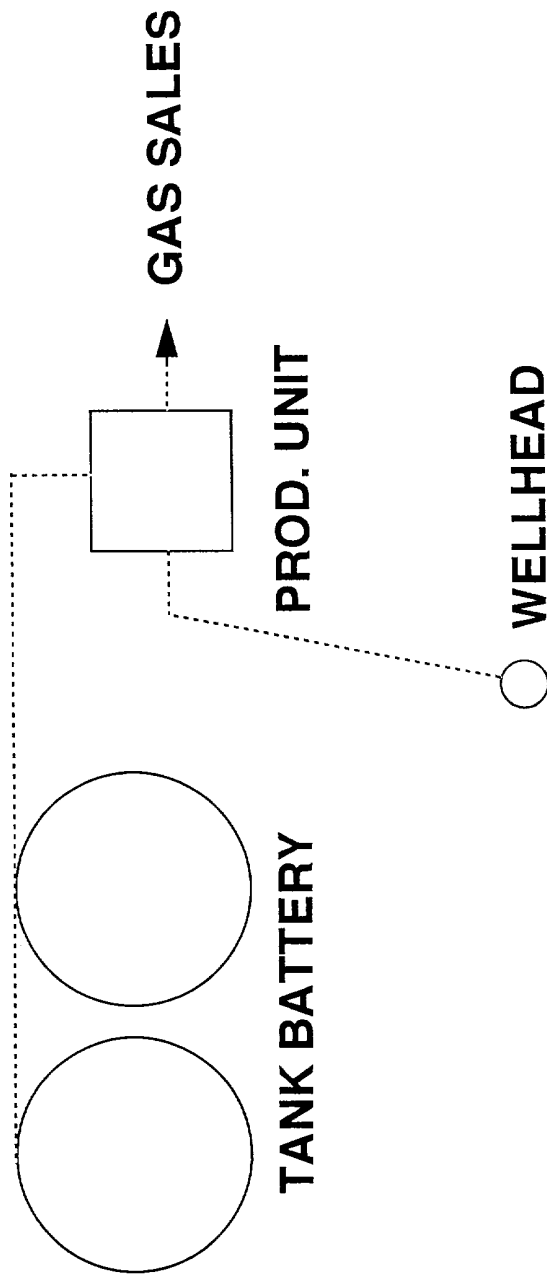
Certification:

I hereby certify that I, or persons under my direct supervision, have inspected the proposed well site and access route: that I am familiar with the conditions which currently exist; that the statements made in this plan are, to the best of my knowledge, true and correct; and that the work associated with operations proposed herein will be performed by Sg Interests LTD/Maralex Resources, Inc., and its contractors and subcontractors in conformity with this plan and the terms and conditions under which it is approved.

Name: D. R. Reimers Date: 1/8/94
D. R. Reimers
Engineering Manager
Maralex Resources, Inc.



PLAT NO. 2 PRODUCTION FACILITIES SCHEMATIC

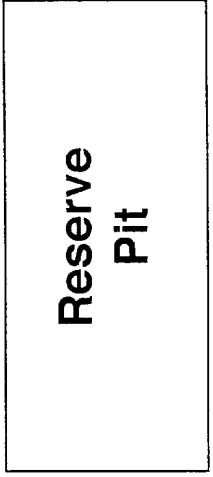
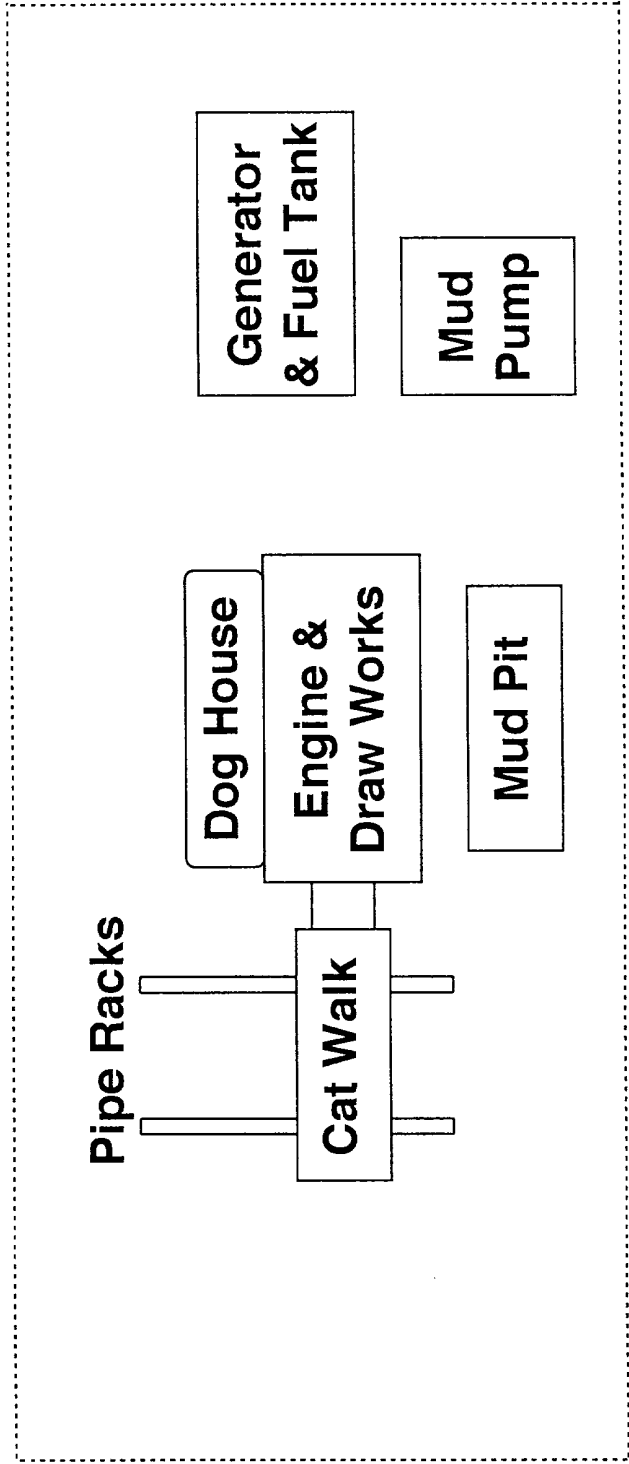


SG INTEREST / MARALEX RES. INC.
HART CANYON 3-1
956 FNL, 1168 FEL
S3-T30N-R10W
SAN JUAN COUNTY NEW MEXICO

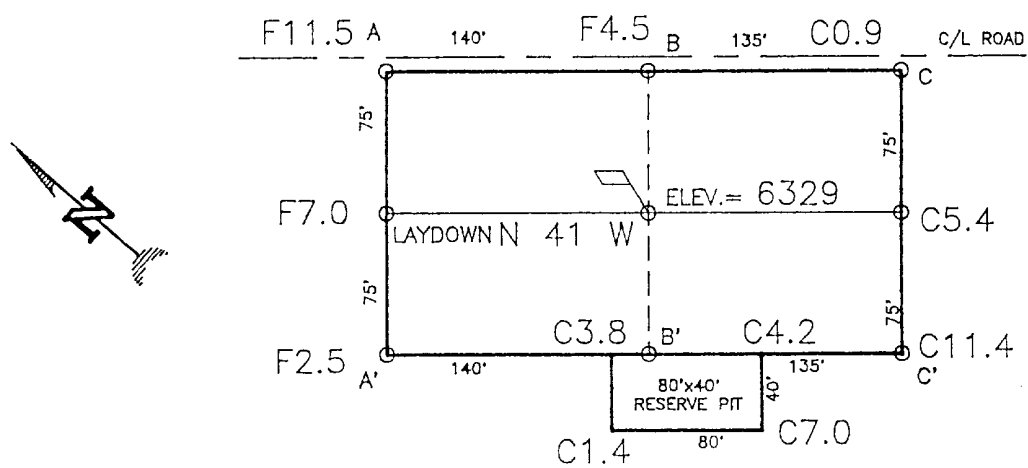
PLAT NO. 3
RIG LAYOUT SCHEMATIC

275'

150'



COMPANY: MARALEX RESOURCES
LEASE: HART CANYON 3-1
FOOTAGE: 956' FNL, 1168' FEL
SEC.: 3, TWN: T.30 N., RNG: R.10 W., NMPM
ELEVATION: 6329



ELEV.	A-A'	C/L
6520		
6510		
6500		
6490		
6480		
6470		

ELEV.	B-B'	C/L
6520		
6510		
6500		
6490		
6480		
6470		

ELEV.	C-C'	C/L
6520		
6510		
6500		
6490		
6480		
6470		