

District I
PO Box 1980, Hobbs, NM 88241-1980
District II
PO Drawer DD, Artesia, NM 88211-0719
District III
1000 Rio Brazos Rd., Aztec, NM 87410
District IV
PO Box 2088, Santa Fe, NM 87504-2088

State of New Mexico
Energy, Minerals & Natural Resources Department

OIL CONSERVATION DIVISION
PO Box 2088
Santa Fe, NM 87504-2088

Form C-101
Revised February 10, 1994
Instructions on back
Submit to Appropriate District Office
State Lease - 6 Copies
Fee Lease - 5 Copies

☐ AMENDED REPORT

APPLICATION FOR PERMIT TO DRILL, RE-ENTER, DEEPEN, PLUGBACK, OR ADD A ZONE

Operator Name and Address. SG INTERESTS I LTD PO Box 338 Ignacio, CO 81137		RECEIVED JUN 17 1994 OIL CON. DIV.	OGRID Number 020572
Property Code 15241	Property Name FLORA VISTA 19		API Number 30 - 0 45 - 29139
		Well No. #2	

Surface Location **DIST. 3**

UL or lot no.	Section	Township	Range	Lot Idn	Feet from the	North/South line	Feet from the	East/West line	County
N	19	30N	11W		833	South	1465	West	San Juan

Proposed Bottom Hole Location If Different From Surface

UL or lot no.	Section	Township	Range	Lot Idn	Feet from the	North/South line	Feet from the	East/West line	County
N	19	30N	11W		833	South	1465	West	San Juan

Proposed Pool 1 Basin Fruitland Coal	5/320 71629	Proposed Pool 2 --
---	----------------	-----------------------

Work Type Code NW	Well Type Code G	Cable/Rotary Rotary	Lease Type Code P	Ground Level Elevation GR 5639'
Multiple No	Proposed Depth 2150'	Formation Pictured Cliffs	Contractor	Spud Date Upon State approval

Proposed Casing and Cement Program

Hole Size	Casing Size	Casing weight/foot	Setting Depth	Sacks of Cement	Estimated TOC
12-1/4"	8-5/8"	24#	250'	190 sx Class B	
7-7/8"	5-1/2"	15.5#	2150'	220 sx Class B	

Describe the proposed program. If this application is to DEEPEN or PLUG BACK give the data on the present productive zone and proposed new productive zone. Describe the blowout prevention program, if any. Use additional sheets if necessary.

SG Interests I Ltd proposes to drill a vertical hole to develop the Fruitland Coal Formation at the above described site. The well will be drilled with LSND mud. A double ram type BOP will be used to maintain well control at all times during the drilling of the well. Sketches of the BOP and choke assembly are included as exhibits to this application. A full suite of logs will be run upon reaching TD. Both strings of casing will be cemented back to surface. A minimum of ten centralizers will be used to optimize placement of the cement around the pipe on the long string.

I hereby certify that the information given above is true and complete to the best of my knowledge and belief.

Signature:

Dennis R. Reimers

Printed name:

Dennis R. Reimers

Title:

Agent

Date:

June 13, 1994

Phone:

(303) 563-4000

OIL CONSERVATION DIVISION

Approved by:

Eric Bush

Title:

DEPUTY OIL & GAS INSPECTOR, DIST. #3

Approval Date:

JUN 17 1994

Expiration Date:

JUN 17 1995

Conditions of Approval:

Attached ☐

State of New Mexico
Energy, Minerals and Natural Resources Department

Submit to Appropriate
District Office
State Lease - 4 copies
Fee Lease - 3 copies

Form C-102
Revised 1-1-89

OIL CONSERVATION DIVISION

DISTRICT I
P.O. Box 1980, Hobbs, N.M. 88240

P.O. Box 2088
Santa Fe, New Mexico 87504-2088

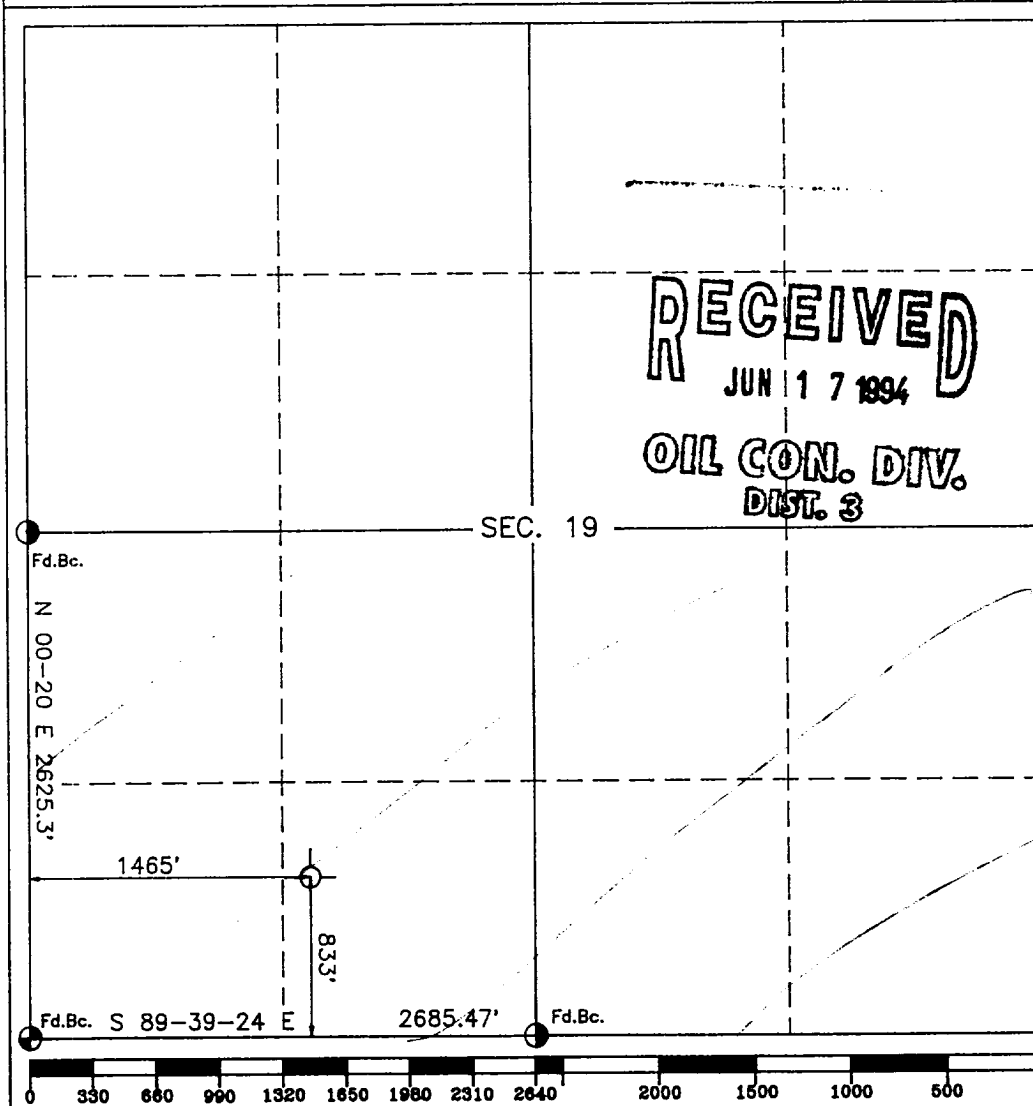
DISTRICT II
P.O. Drawer DD, Artesia, N.M. 88210

DISTRICT III
1000 Rio Brazos Rd., Aztec, N.M. 87410

WELL LOCATION AND ACREAGE DEDICATION PLAT
All Distances must be from the outer boundaries of the section

Operator SG INTERESTS I LTD			Lease FLORA VISTA 1B-2		Well No. 2
Unit Letter N	Section 19	Township 30 NORTH	Range 11 WEST	NMPM	County SAN JUAN
Actual Footage Location of Well: 833 feet from the SOUTH line and 1465 feet from the WEST line					
Ground level Elev. 5639	Producing Formation Fruitland Coal		Pool Basin Fruitland Coal		Dedicated Acreage: 320 ^{32.6-26} Acres

- Outline the acreage dedicated to the subject well by colored pencil or hatchure mark on the plat below.
- If more than one lease is dedicated to the well, outline each and identify the ownership thereof (both as to working interest and royalty).
- If more than one lease of different ownership is dedicated to the well, have the interest of all owners been consolidated by communitization, unitization, force-pooling, etc.?
☐ Yes ☐ No If answer is "yes" type of consolidation _____
if answer is "no" list the owners and tract descriptions which have actually been consolidated. (Use reverse side of this form if necessary.)
No allowable will be assigned to the well until all interests have been consolidated (by communitization, unitization, forced-pooling, or otherwise) or until a non-standard unit, eliminating such interest, has been approved by the Division.



OPERATOR CERTIFICATION

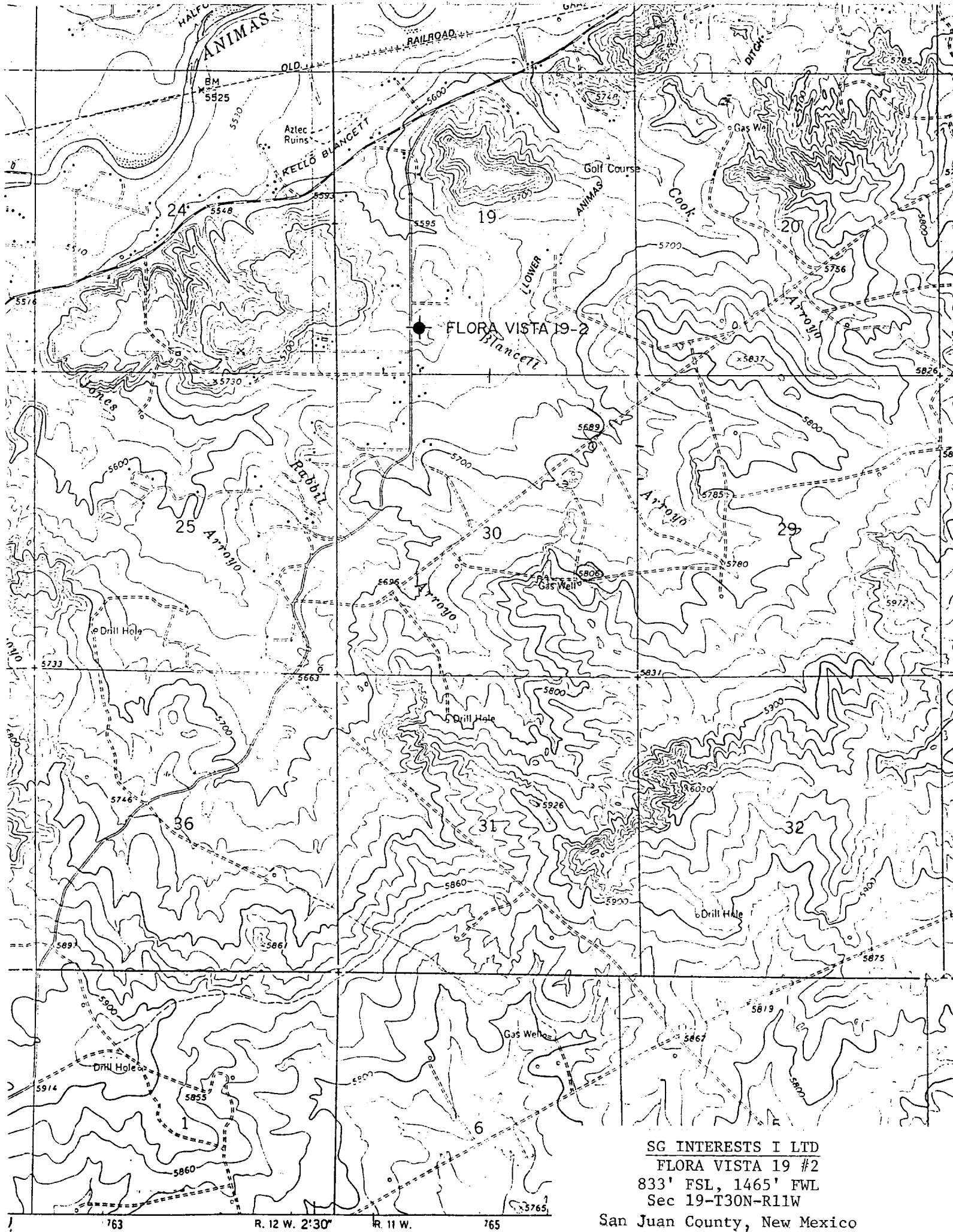
I hereby certify that the information contained herein is true and complete to the best of my knowledge and belief.

Signature *Dennis R. Reimers*
Printed Name Dennis R. Reimers
Position Agent
Company SG INTERESTS I LTD
Date June 13, 1994

SURVEYOR CERTIFICATION

I hereby certify that the well location shown on this plat was plotted from field notes of actual surveys made by me or under my supervision, and that the same is true and correct to the best of my knowledge and belief.

Date Surveyed JUN 13 1994
Signature & Seal of Professional Surveyor *ROY A. RUSH*
Certificate No. 8894

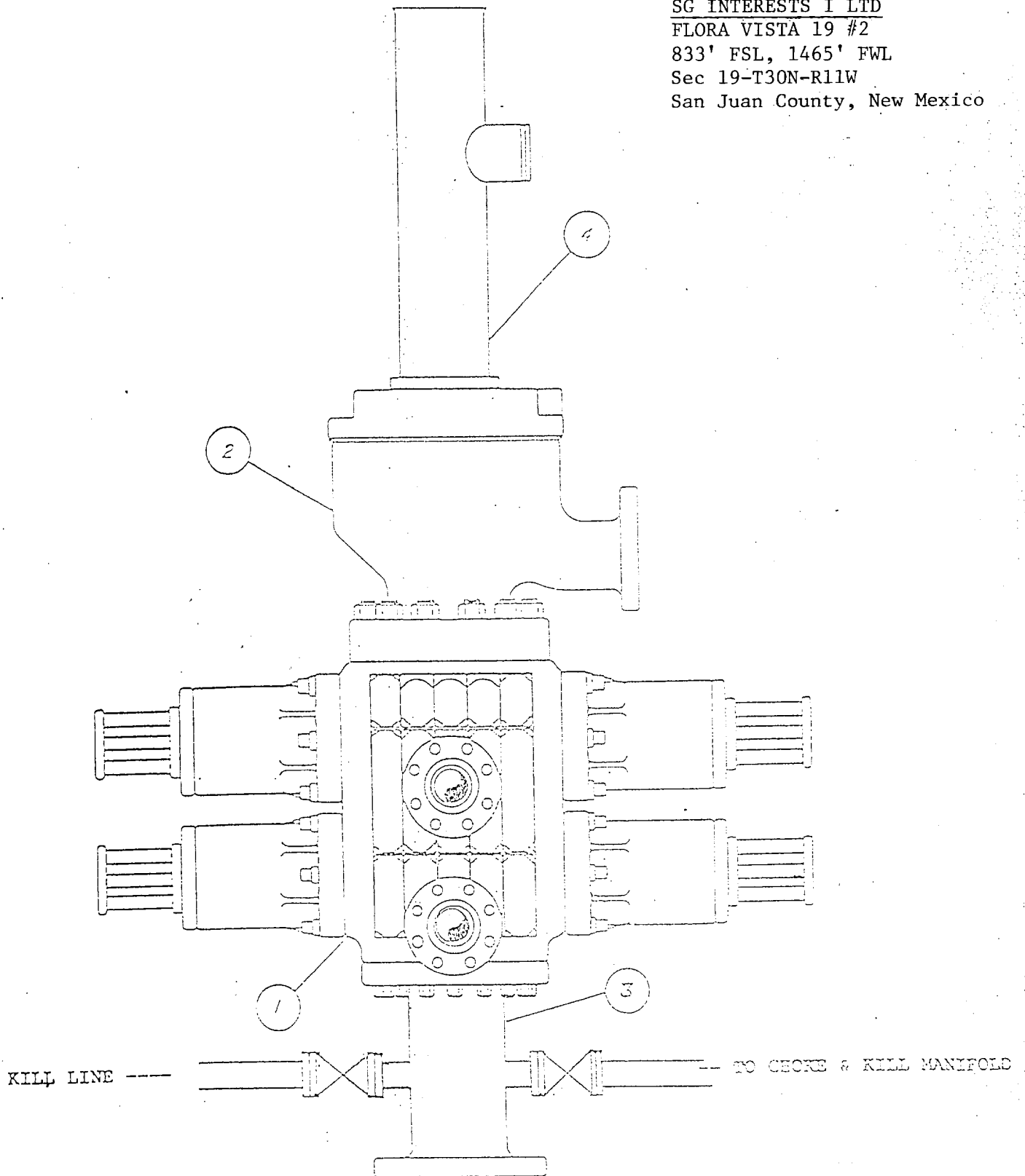


SG INTERESTS I LTD
FLORA VISTA 19 #2
833' FSL, 1465' FWL
Sec 19-T30N-R11W
San Juan County, New Mexico

BLOWOUT PREVENTION EQUIPMENT SPECIFICATIONS

1. All BOP equipment shall be fluid and/or mechanically operated.
2. BOP's and all fittings will be in good working condition.
3. Equipment through which the bit must pass shall be at least as large as the casing size being drilled.
4. The nipple above the BOP shall be at least the same size as the last casing set.
5. The upper kelly cock with handle and lower kelly cock shall be rated at the BOP working pressure.
6. A floor safety valve (full opening) or drill string BOP with appropriate pressure ratings shall be available on the rig floor with connections or subs to fit any tool joint in the string.
7. The minimum size choke line shall be 3 inches nominal diameter, with a minimum size for vent lines downstream of chokes of 2 inches nominal, and vent lines which bypass shall be a minimum of 3 inches nominal and as straight as possible.
8. All valves, fittings and lines between the closing unit and the blowout preventer stack should be of steel construction with rated working pressure at least equal to working pressure rating of the stack. Lines shall be bundled and protected from damage.
9. Minimum size for kill line is 2 inches nominal.
10. Ram type preventers shall be equipped with extension hand wheels or hydraulic locks.

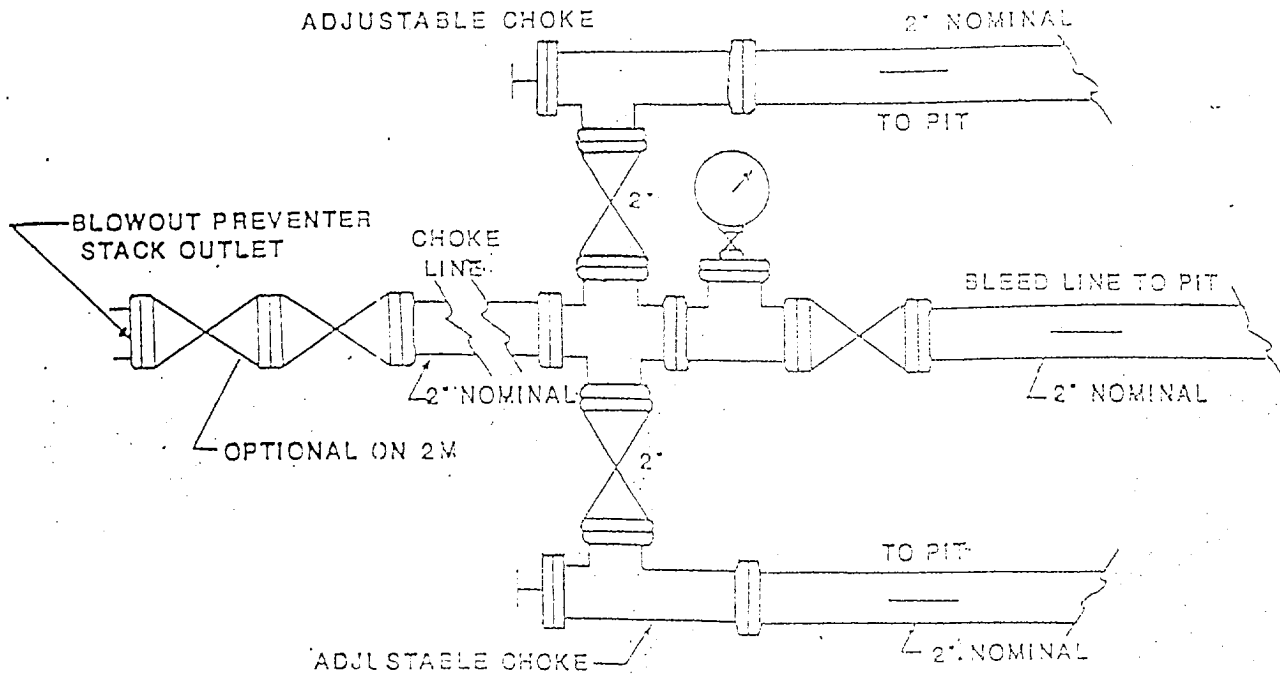
SG INTERESTS I LTD
 FLORA VISTA 19 #2
 833' FSL, 1465' FWL
 Sec 19-T30N-R11W
 San Juan County, New Mexico



- ① DOUBLE RAM 3000 LB. MANUAL LOCK BLOWOUT PREVENTER
- ② ROTATING HEAD IF AIR OR GAS DRILLING
- ③ SPOOL W/2" MINIMUM KILL LINE VALVE & KILL LINE
- ④ DRILLING FLOW NIPPLE

CHOKE MANIFOLD SCHEMATIC

SG INTEREST I LTD
FLORA VISTA 19 #2
833' FSL, 1465' FWL
Sec 19-T30N-R11W
San Juan County, New Mexico



FOR 2,000 AND 3,000 PSI RATED
WORKING PRESSURE

UPPER KELLY COCK VALVE WITH HANDLE AVAILABLE

SAFETY VALVE AND SUBS TO FIT ALL DRILL STRINGS
IN USE WILL BE AVAILABLE