

UNITED STATES  
DEPARTMENT OF THE INTERIOR  
BUREAU OF LAND MANAGEMENT

APPLICATION FOR PERMIT TO DRILL OR DEEPEN

1A. TYPE OF WORK

DRILL ☒

DEEPEN ☐

b. TYPE OF WELL

OIL  
WELL ☐

GAS  
WELL ☒

OTHER

SINGLE  
ZONE ☐

MULTIPLE  
ZONE ☒

2. NAME OF OPERATOR

NORTHWEST PIPELINE CORPORATION

OGRID 16189

3. ADDRESS AND TELEPHONE NO. c/o Walsh Engr. & Prod. Corp.

7415 E. Main Farmington, N.M. 87402 505 327-4892

4. LOCATION OF WELL (Report location clearly and in accordance with any State requirements.)\*  
At surface

1679'FNL & 1835'FEL

At proposed prod. zone

Same

14. DISTANCE IN MILES AND DIRECTION FROM NEAREST TOWN OR POST OFFICE\*

10 miles South of Allison, Colorado

15. DISTANCE FROM PROPOSED\*

LOCATION TO NEAREST  
PROPERTY OR LEASE LINE, FT.  
(Also to nearest drlg. unit line, if any)

805'

16. NO. OF ACRES IN LEASE

2552.71

18. DISTANCE FROM PROPOSED LOCATION\*  
TO NEAREST WELL, DRILLING, COMPLETED,  
OR APPLIED FOR, ON THIS LEASE, FT.

1300'

19. PROPOSED DEPTH

5960'

17. NO. OF ACRES ASSIGNED  
TO THIS WELL

160 PC / 56.50

20. ROTARY OR CABLE TOOLS

Rotary

21. ELEVATIONS (Show whether DF, RT, GR, etc.)

6322'GR

This action is subject to technical and  
procedural review pursuant to 43 CFR 3160.3  
and appeal pursuant to 43 CFR 3160.4

22. APPROX. DATE WORK WILL START\*

June 1, 1994

23. PROPOSED CASING AND CEMENTING PROGRAM

DRILLING OPERATIONS AUTHORIZED ARE  
SUBJECT TO COMPLIANCE WITH ATTACHED

| SIZE OF HOLE | GRADE, SIZE OF CASING | WEIGHT PER FOOT | SETTING DEPTH |
|--------------|-----------------------|-----------------|---------------|
| 12-1/4"      | 9-5/8" K-55           | 36.0#           | 500'          |
| 8-3/4"       | 7" K-55               | 20.0#           | 3290'         |
| 6-1/4"       | 4-1/2" K-55           | 10.5#           | 3490'-5960'   |

"GENERAL REQUIREMENTS"

315 cuft C1 "B" w/2% CaCl2  
777 cuft 65/35 Poz, 177 cuft C1 B  
424 cuft C1 "B" w/4% gel and  
additives

NORTHWEST PIPELINE proposes to drill a vertical well to develop the Pictured Cliffs and Mesa Verde formations at the above described site in accordance with the Attached drilling and surface use programs.

This location has been archaeologically surveyed by CRMC. Copies of the report will be submitted directly to your office.

This APD also is serving as an application to obtain BLM road right-of-way. The right-of-way will be 1200' of new access road in the SW/NE, NW/NE and NE/NW of Section 16, T31N, R6W where it connects to the access road from the Rosa Unit #145A.

RECEIVED  
JUL 6 1994

IN ABOVE SPACE DESCRIBE PROPOSED PROGRAM: If proposal is to deepen, give data on present productive zone and proposed new productive zone. If proposal is to drill or deepen directionally, give pertinent data on subsurface locations and measured and true vertical depths. Give blowout preventer program, if any.

24.

SIGNED

Paul C. Thompson

TITLE

Paul C. Thompson, Agent

OIL CON. DIV.  
DIST. 3

(This space for Federal or State office use)

PERMIT NO.

APPROVAL DATE

Application approval does not warrant or certify that the applicant holds legal or equitable title to those rights in the subject lease which would entitle the applicant to sue for damages or injunctions thereon.

CONDITIONS OF APPROVAL, IF ANY:

APPROVED BY

NMOCD

TITLE

DATE

JUN 01 1994  
Chip Haraden for  
DISTRICT MANAGER

\*See Instructions On Reverse Side

Title 18 U.S.C. Section 1001, makes it a crime for any person knowingly and willfully to make to any department or agency of the United States any false, fictitious or fraudulent statements or representations as to any matter within its jurisdiction.

District II  
PO Drawer DD, Artesia, NM 83211-0719

District III  
1000 Rio Brazos Rd., Aztec, NM 87410

District IV  
PO Box 2088, Santa Fe, NM 37504-2088

## OIL CONSERVATION DIVISION

PO Box 2088  
Santa Fe, NM 87504-2088

Revised February 10, 1994

Instructions on back

Submit to Appropriate District Office

State Lease - 4 Copies

Free Lease - 3 Copies

☐ AMENDED REPORT

## WELL LOCATION AND ACREAGE DEDICATION PLAT

|                 |  |                                |  |                               |               |
|-----------------|--|--------------------------------|--|-------------------------------|---------------|
| 1 API Number    |  | 2 Pool Code                    |  | 3 Pool Name                   |               |
| 30-045-2A166    |  | 96175                          |  | WILDCAT: ROSA -PICTURED CLIFF |               |
| 4 Property Code |  | 5 Property Name                |  |                               | 6 Well Number |
| 008480          |  | ROSA UNIT                      |  |                               | # 145         |
| 7 OGRID No.     |  | 8 Operator Name                |  |                               | 9 Elevation   |
| 16189           |  | NORTHWEST PIPELINE CORPORATION |  |                               | 6322          |

### <sup>10</sup> Surface Location

|                    |               |                 |             |         |                        |                         |                        |                       |                    |
|--------------------|---------------|-----------------|-------------|---------|------------------------|-------------------------|------------------------|-----------------------|--------------------|
| UL or lot no.<br>G | Section<br>16 | Township<br>31N | Range<br>6W | Lot 14n | Feet from the<br>1679' | North/South line<br>FNL | Feet from the<br>1835' | East/West line<br>FEL | County<br>SAN JUAN |
|--------------------|---------------|-----------------|-------------|---------|------------------------|-------------------------|------------------------|-----------------------|--------------------|

## 11 Bottom Hole Location If Different From Surface

| UL or lot no. | Section | Township | Range | Lot Idn | Feet from the | North/South line | Feet from the | East/West line | County |
|---------------|---------|----------|-------|---------|---------------|------------------|---------------|----------------|--------|
|---------------|---------|----------|-------|---------|---------------|------------------|---------------|----------------|--------|

|                                  |                         |                            |              |
|----------------------------------|-------------------------|----------------------------|--------------|
| 12 Dedicated Acres<br>160<br>150 | 13 Joint or Infill<br>Y | 14 Consolidation Code<br>U | 15 Order No. |
|----------------------------------|-------------------------|----------------------------|--------------|

NO ALLOWABLE WILL BE ASSIGNED TO THIS COMPLETION UNTIL ALL INTERESTS HAVE BEEN CONSOLIDATED  
OR A NON-STANDARD UNIT HAS BEEN APPROVED BY THE DIVISION

17 OPERATOR CERTIFICATION

I hereby certify that the information contained herein is true and complete to the best of my knowledge and belief

Paul C. Thompson  
Signature

Signature \_\_\_\_\_

Printed Name \_\_\_\_\_

Printed Name  
Paul C. Thompson, P.E.

Title  
Agent

Date 5/12/94

## 18 SURVEYOR CERTIFICATION

I hereby certify that the well location shown on this plat was plotted from field notes of actual surveys made by me or under my supervision, and that the same is true and correct to the best of my belief.

APRIL 14, 1994

Date of Survey \_\_\_\_\_

Signature and Seal of Professional Surveyor:

Henry Lemon Jaffee

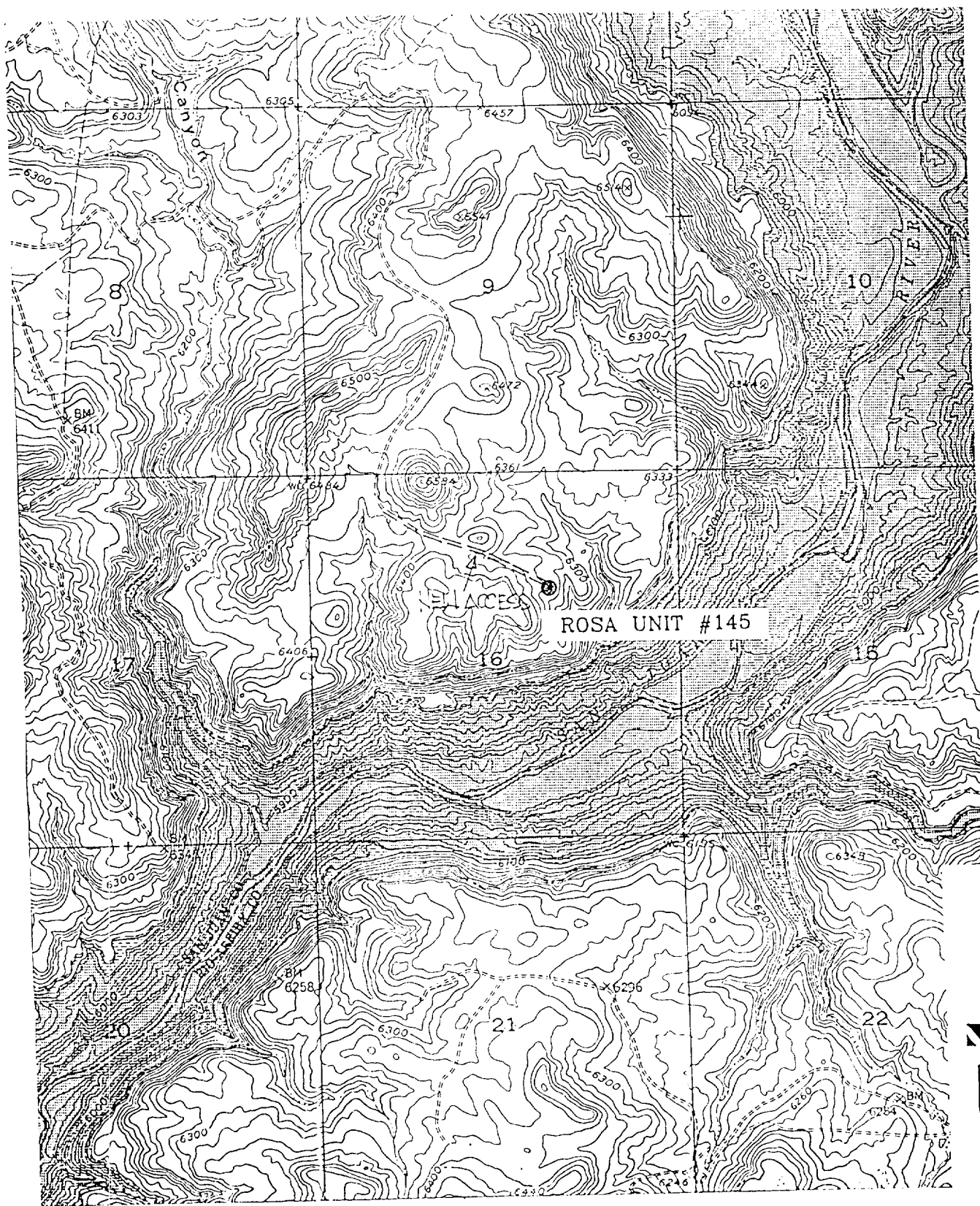
8336

Certificate Number

*Jerry Lomen Jiffare*

8336

Certificate Number



ROSA UNIT #145      NORTHWEST PIPELINE CORPORATION  
 1679' FNL, 1835' FEL, SEC. 16, T.31 N., R.6 W. N.M.P.M.  
 SAN JUAN COUNTY, NEW MEXICO  
 BANCOS MESA NW  
 ELEV.= 6322